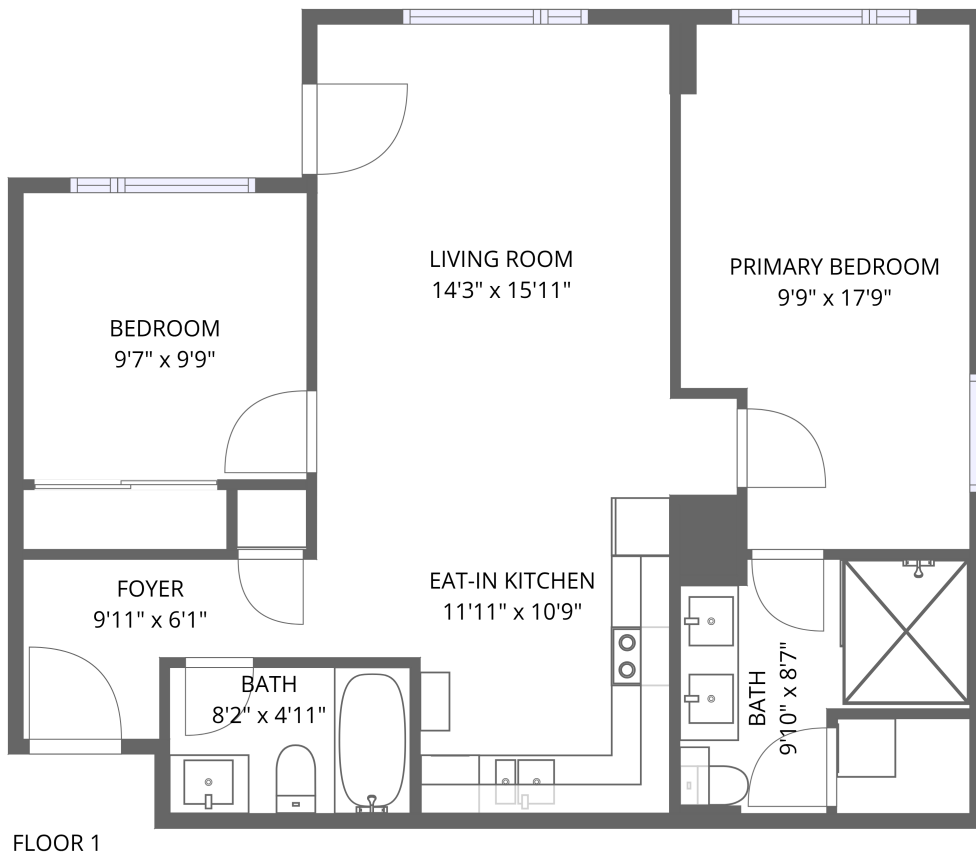


## Home report

**1035 Bank Street, Glebe - Dows Lake, Ottawa South, Ottawa,  
Ontario, Canada, K1S 5K3, Appt #406**




**Total Area: 786 sq. ft**

Floor 1: 786 sq. ft

Excluded: Walls: 0 sq. ft

## Property summary

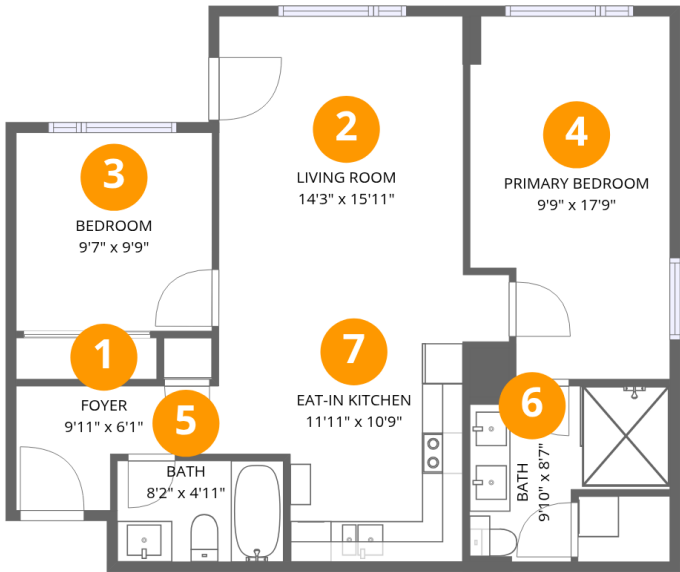
 **1** Floors

 **2** Bedrooms

 **2** Bathrooms

Home report

1035 Bank Street, Glebe - Dows Lake, Ottawa South, Ottawa,  
Ontario, Canada, K1S 5K3, Appt #406



Room dimensions

Floor 1 Total:786sqft   Excluded: 0sqft

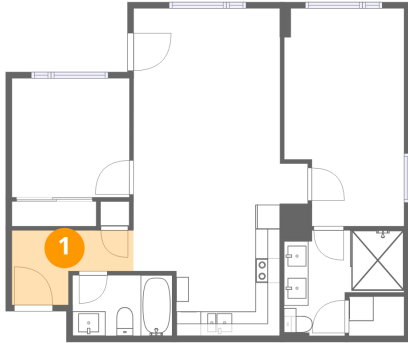
#		Max Dimensions	sqft	Included
1	Foyer	9'11" x 6'1"	46 sq. ft	Yes
2	Living Room	14'3" x 15'11"	198 sq. ft	Yes
3	Bedroom	9'7" x 9'9"	93 sq. ft	Yes
4	Primary Bedroom	9'9" x 17'9"	162 sq. ft	Yes
5	Bath	8'2" x 4'11"	40 sq. ft	Yes
6	Bath	9'10" x 8'7"	65 sq. ft	Yes
7	Eat-in Kitchen	11'11" x 10'9"	110 sq. ft	Yes

## Home report

1035 Bank Street, Glebe - Dows Lake, Ottawa South, Ottawa,  
Ontario, Canada, K1S 5K3, Appt #406

### 1 Floor 1 - Foyer

---

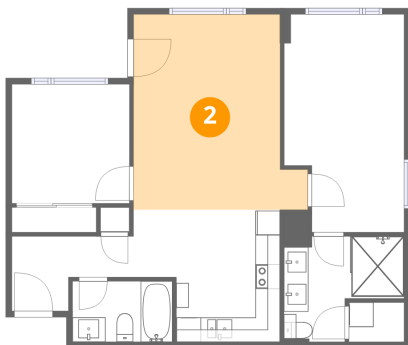


Max Dimensions: 9'11" x 6'1"  
Calculated Area: 46 sq. ft  
Included: Yes

Heated: Yes  
Finished: Yes  
Enclosed: Yes  
Contiguous: Yes  
Permitted: Yes  
Wet space: No  
Addition: No  
Conversion: No

### 2 Floor 1 - Living Room

---



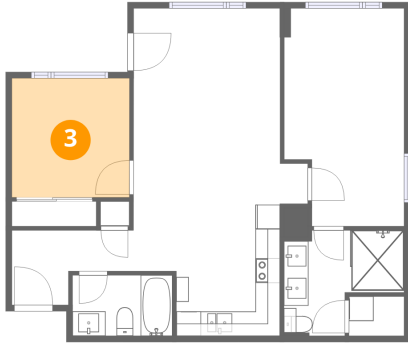
Max Dimensions: 14'3" x 15'11"  
Calculated Area: 198 sq. ft  
Included: Yes

Heated: Yes  
Finished: Yes  
Enclosed: Yes  
Contiguous: Yes  
Permitted: Yes  
Wet space: No  
Addition: No  
Conversion: No

## Home report

1035 Bank Street, Glebe - Dows Lake, Ottawa South, Ottawa,  
Ontario, Canada, K1S 5K3, Appt #406

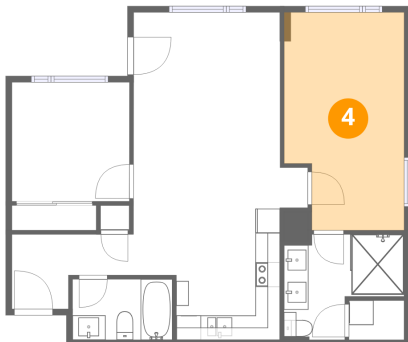
### 3 Floor 1 - Bedroom



Max Dimensions: 9'7" x 9'9"  
Calculated Area: 93 sq. ft  
Included: Yes

Heated: Yes  
Finished: Yes  
Enclosed: Yes  
Contiguous: Yes  
Permitted: Yes  
Wet space: No  
Addition: No  
Conversion: No

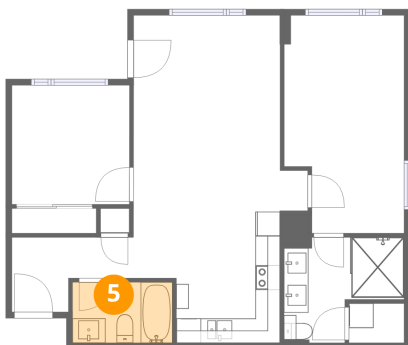
### 4 Floor 1 - Primary Bedroom



Max Dimensions: 9'9" x 17'9"  
Calculated Area: 162 sq. ft  
Included: Yes

Heated: Yes  
Finished: Yes  
Enclosed: Yes  
Contiguous: Yes  
Permitted: Yes  
Wet space: No  
Addition: No  
Conversion: No

### 5 Floor 1 - Bath



Max Dimensions: 8'2" x 4'11"  
Calculated Area: 40 sq. ft  
Included: Yes

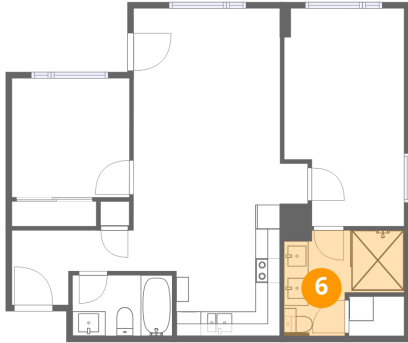
Heated: Yes  
Finished: Yes  
Enclosed: Yes  
Contiguous: Yes  
Permitted: Yes  
Wet space: Yes  
Addition: No  
Conversion: No

## Home report

1035 Bank Street, Glebe - Dows Lake, Ottawa South, Ottawa,  
Ontario, Canada, K1S 5K3, Appt #406

### 6 Floor 1 - Bath

---

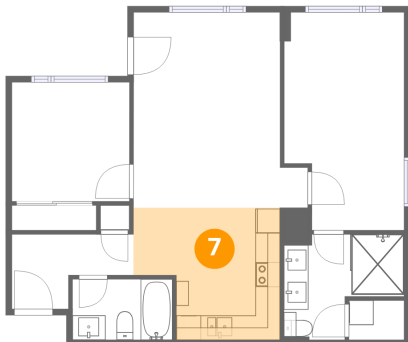


Max Dimensions: 9'10" x 8'7"  
Calculated Area: 65 sq. ft  
Included: Yes

Heated: Yes  
Finished: Yes  
Enclosed: Yes  
Contiguous: Yes  
Permitted: Yes  
Wet space: Yes  
Addition: No  
Conversion: No

### 7 Floor 1 - Eat-in Kitchen

---



Max Dimensions: 11'11" x 10'9"  
Calculated Area: 110 sq. ft  
Included: Yes

Heated: Yes  
Finished: Yes  
Enclosed: Yes  
Contiguous: Yes  
Permitted: Yes  
Wet space: No  
Addition: No  
Conversion: No