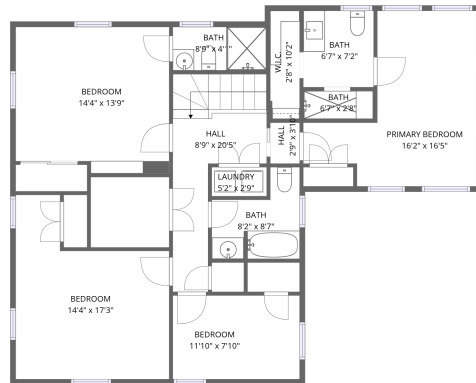
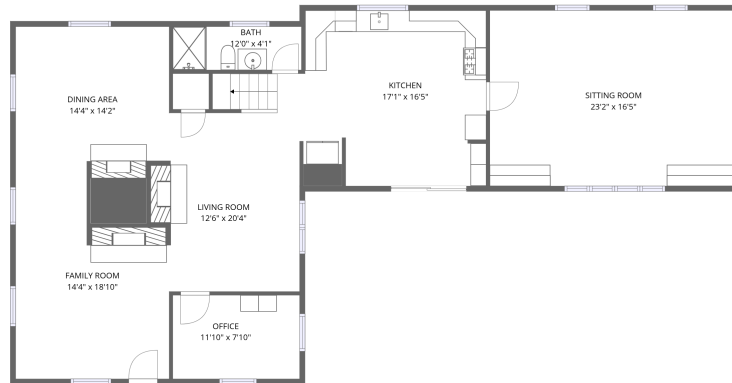


Home data report

566 Maple St, Litchfield, CT, US



2nd floor



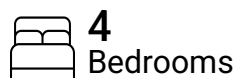
1st floor

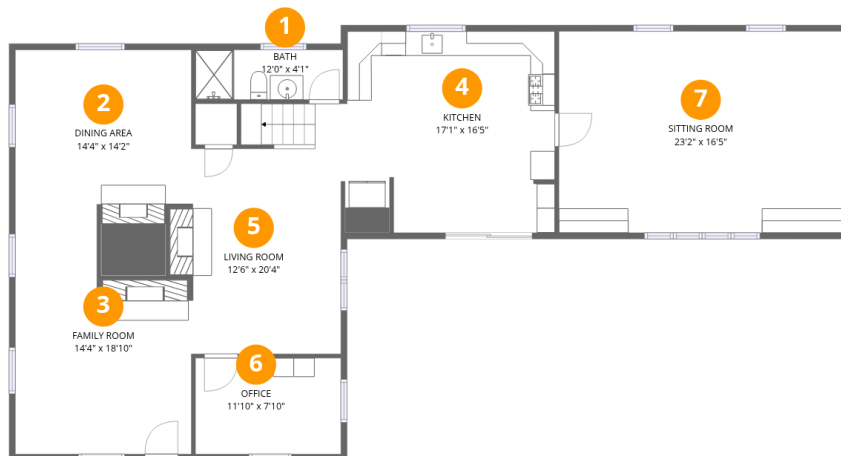
**Total Area: 2699 sq. ft**

1st Floor: 1548 sq. ft, 2nd Floor: 1151 sq. ft

Excluded: Walls: 182 sq. ft

## Property summary



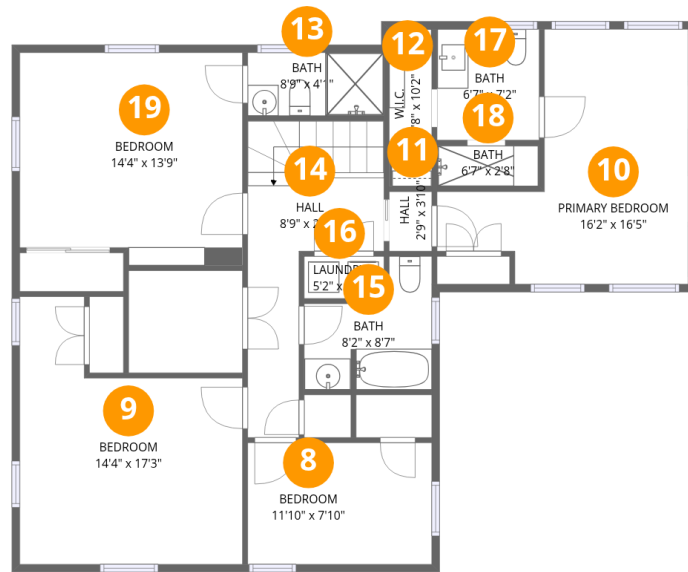


## Room dimensions

Floor 1

Total: 1548 sqft Excluded: 0 sqft

#		Dimensions	sqft	Counted as living area
1	Bath	12'0" x 4'1"	49 sq. ft	Yes
2	Dining Area	14'4" x 14'2"	204 sq. ft	Yes
3	Family Room	14'4" x 18'10"	270 sq. ft	Yes
4	Kitchen	17'1" x 16'5"	281 sq. ft	Yes
5	Living Room	12'6" x 20'4"	255 sq. ft	Yes
6	Office	11'10" x 7'10"	93 sq. ft	Yes
7	Sitting Room	23'2" x 16'5"	380 sq. ft	Yes



## Room dimensions

Floor 2

Total:1151sqft

Excluded: 0sqft

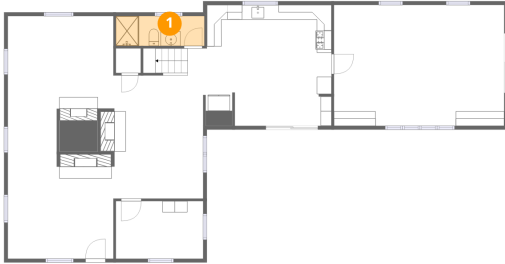
#		Dimensions	sqft	Counted as living area
8	Bedroom	11'10" x 7'10"	93 sq. ft	Yes
9	Bedroom	14'4" x 17'3"	247 sq. ft	Yes
10	Primary Bedroom	16'2" x 16'5"	265 sq. ft	Yes
11	Hall	2'9" x 3'10"	11 sq. ft	Yes
12	W.I.C.	2'8" x 10'2"	27 sq. ft	Yes
13	Bath	8'9" x 4'1"	36 sq. ft	Yes
14	Hall	8'9" x 20'5"	179 sq. ft	Yes
15	Bath	8'2" x 8'7"	70 sq. ft	Yes
16	Laundry	5'2" x 2'9"	14 sq. ft	Yes
17	Bath	6'7" x 7'2"	47 sq. ft	Yes
18	Bath	6'7" x 2'8"	17 sq. ft	Yes

Home data report

## 566 Maple St,Litchfield,CT,US

#		Dimensions	sqft	Counted as living area
19	Bedroom	14'4" x 13'9"	197 sq. ft	Yes

## 1 Floor 1 - Bath



Dimensions: 12'0" x 4'1"  
Area: 49 sq. ft  
Counted as living area: Yes

Heated: Yes  
Finished: Yes  
Enclosed: Yes  
Contiguous: Yes  
Permitted: Yes  
Wet space: Yes  
Addition: No  
Conversion: No

## 2 Floor 1 - Dining Area



Dimensions: 14'4" x 14'2"  
Area: 204 sq. ft  
Counted as living area: Yes

Heated: Yes  
Finished: Yes  
Enclosed: Yes  
Contiguous: Yes  
Permitted: Yes  
Wet space: No  
Addition: No  
Conversion: No

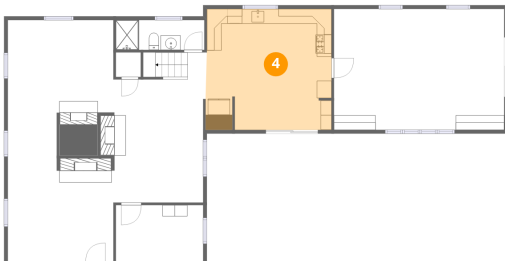
### 3 Floor 1 - Family Room



Dimensions: 14'4" x 18'10"  
Area: 270 sq. ft  
Counted as living area: Yes

Heated: Yes  
Finished: Yes  
Enclosed: Yes  
Contiguous: Yes  
Permitted: Yes  
Wet space: No  
Addition: No  
Conversion: No

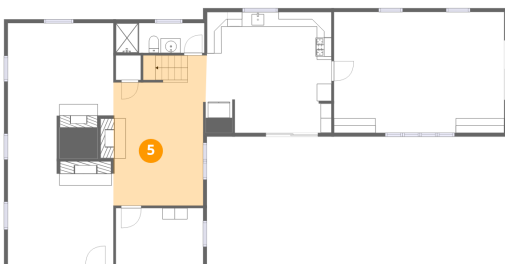
### 4 Floor 1 - Kitchen



Dimensions: 17'1" x 16'5"  
Area: 281 sq. ft  
Counted as living area: Yes

Heated: Yes  
Finished: Yes  
Enclosed: Yes  
Contiguous: Yes  
Permitted: Yes  
Wet space: No  
Addition: No  
Conversion: No

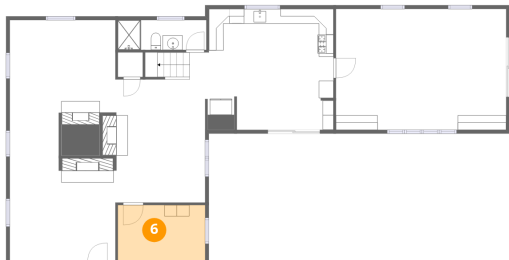
### 5 Floor 1 - Living Room



Dimensions: 12'6" x 20'4"  
Area: 255 sq. ft  
Counted as living area: Yes

Heated: Yes  
Finished: Yes  
Enclosed: Yes  
Contiguous: Yes  
Permitted: Yes  
Wet space: No  
Addition: No  
Conversion: No

## 6 Floor 1 - Office



Dimensions: 11'10" x 7'10"  
Area: 93 sq. ft  
Counted as living area: Yes

Heated: Yes  
Finished: Yes  
Enclosed: Yes  
Contiguous: Yes  
Permitted: Yes  
Wet space: No  
Addition: No  
Conversion: No

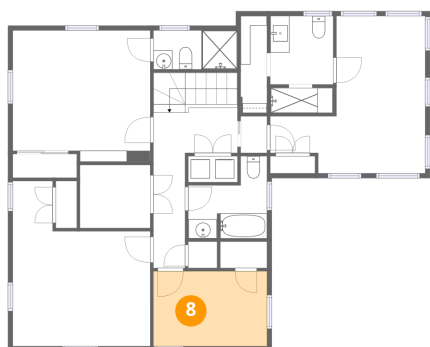
## 7 Floor 1 - Sitting Room



Dimensions: 23'2" x 16'5"  
Area: 380 sq. ft  
Counted as living area: Yes

Heated: Yes  
Finished: Yes  
Enclosed: Yes  
Contiguous: Yes  
Permitted: Yes  
Wet space: No  
Addition: No  
Conversion: No

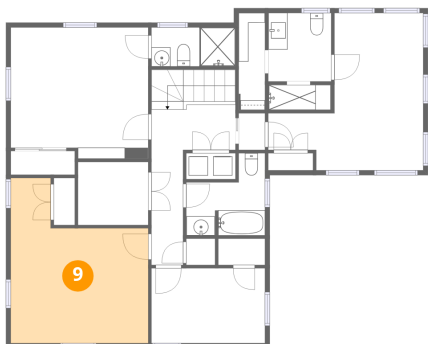
## 8 Floor 2 - Bedroom



Dimensions: 11'10" x 7'10"  
Area: 93 sq. ft  
Counted as living area: Yes

Heated: Yes  
Finished: Yes  
Enclosed: Yes  
Contiguous: Yes  
Permitted: Yes  
Wet space: No  
Addition: No  
Conversion: No

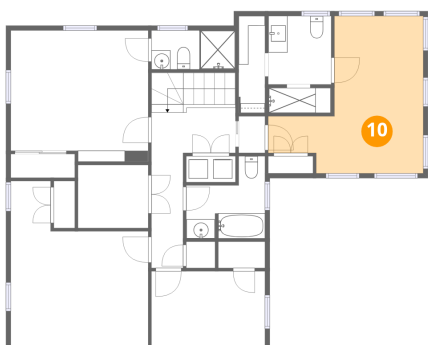
## 9 Floor 2 - Bedroom



Dimensions: 14'4" x 17'3"  
Area: 247 sq. ft  
Counted as living area: Yes

Heated: Yes  
Finished: Yes  
Enclosed: Yes  
Contiguous: Yes  
Permitted: Yes  
Wet space: No  
Addition: No  
Conversion: No

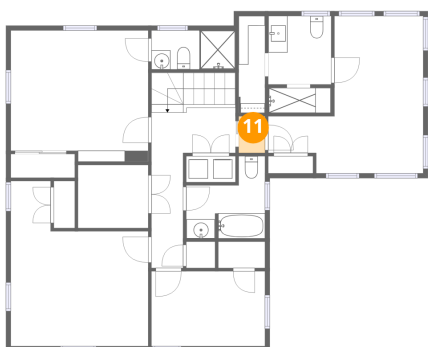
## 10 Floor 2 - Primary Bedroom



Dimensions: 16'2" x 16'5"  
Area: 265 sq. ft  
Counted as living area: Yes

Heated: Yes  
Finished: Yes  
Enclosed: Yes  
Contiguous: Yes  
Permitted: Yes  
Wet space: No  
Addition: No  
Conversion: No

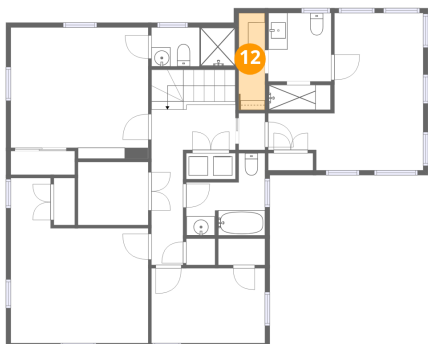
## 11 Floor 2 - Hall



Dimensions: 2'9" x 3'10"  
Area: 11 sq. ft  
Counted as living area: Yes

Heated: Yes  
Finished: Yes  
Enclosed: Yes  
Contiguous: Yes  
Permitted: Yes  
Wet space: No  
Addition: No  
Conversion: No

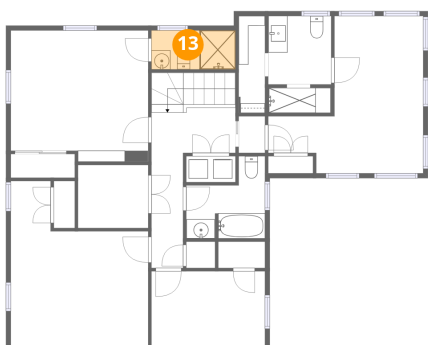
**12** Floor 2 - W.I.C.



Dimensions: 2'8" x 10'2"  
Area: 27 sq. ft  
Counted as living area: No

Heated: Yes  
Finished: Yes  
Enclosed: Yes  
Contiguous: Yes  
Permitted: Yes  
Wet space: No  
Addition: No  
Conversion: No

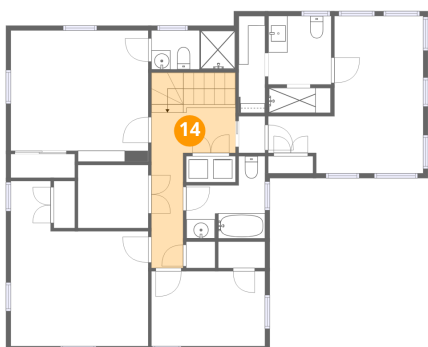
**13** Floor 2 - Bath



Dimensions: 8'9" x 4'1"  
Area: 36 sq. ft  
Counted as living area: Yes

Heated: Yes  
Finished: Yes  
Enclosed: Yes  
Contiguous: Yes  
Permitted: Yes  
Wet space: Yes  
Addition: No  
Conversion: No

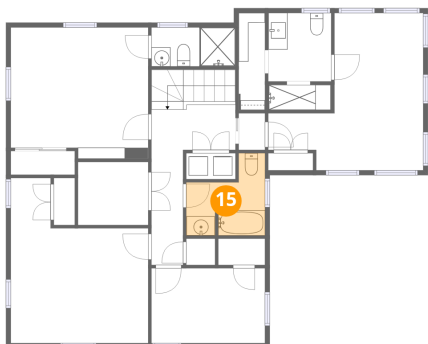
**14** Floor 2 - Hall



Dimensions: 8'9" x 20'5"  
Area: 179 sq. ft  
Counted as living area: Yes

Heated: Yes  
Finished: Yes  
Enclosed: Yes  
Contiguous: Yes  
Permitted: Yes  
Wet space: No  
Addition: No  
Conversion: No

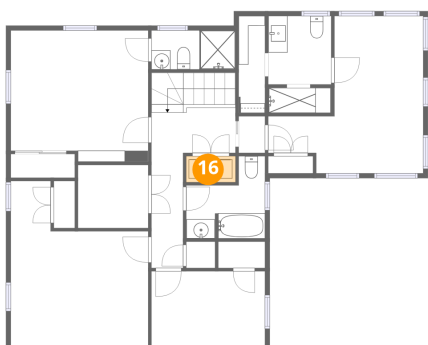
**15** Floor 2 - Bath



Dimensions: 8'2" x 8'7"  
Area: 70 sq. ft  
Counted as living area: No

Heated: Yes  
Finished: Yes  
Enclosed: Yes  
Contiguous: Yes  
Permitted: Yes  
Wet space: Yes  
Addition: No  
Conversion: No

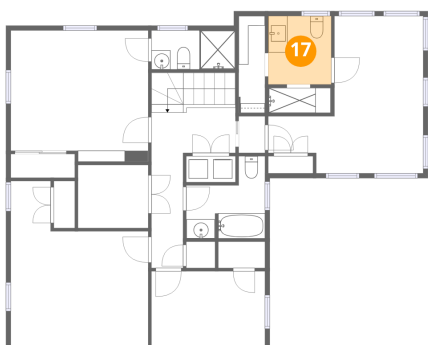
**16** Floor 2 - Laundry



Dimensions: 5'2" x 2'9"  
Area: 14 sq. ft  
Counted as living area: Yes

Heated: Yes  
Finished: Yes  
Enclosed: Yes  
Contiguous: Yes  
Permitted: Yes  
Wet space: No  
Addition: No  
Conversion: No

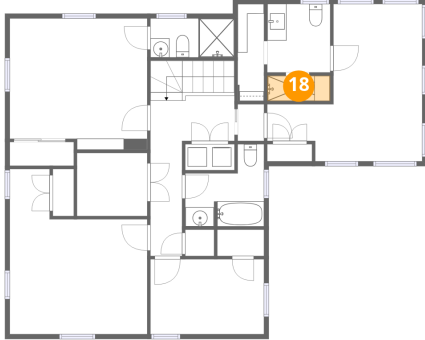
**17** Floor 2 - Bath



Dimensions: 6'7" x 7'2"  
Area: 47 sq. ft  
Counted as living area: No

Heated: Yes  
Finished: Yes  
Enclosed: Yes  
Contiguous: Yes  
Permitted: Yes  
Wet space: Yes  
Addition: No  
Conversion: No

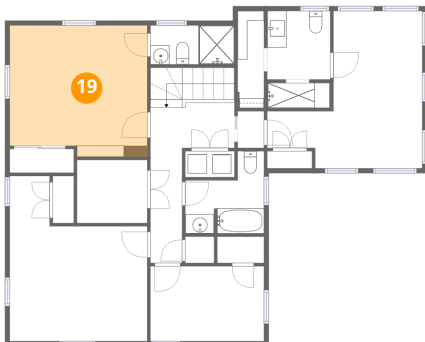
**18** Floor 2 - Bath



Dimensions: 6'7" x 2'8"  
Area: 17 sq. ft  
Counted as living area: No

Heated: Yes  
Finished: Yes  
Enclosed: Yes  
Contiguous: Yes  
Permitted: Yes  
Wet space: Yes  
Addition: No  
Conversion: No

**19** Floor 2 - Bedroom



Dimensions: 14'4" x 13'9"  
Area: 197 sq. ft  
Counted as living area: Yes

Heated: Yes  
Finished: Yes  
Enclosed: Yes  
Contiguous: Yes  
Permitted: Yes  
Wet space: No  
Addition: No  
Conversion: No