

Home data report

26 Flintlock Road, Salem, Rockingham County, New Hampshire, United States, 03079



Total Area: 4327 sq. ft

Basement: 896 sq. ft, 1st Floor: 1914 sq. ft, 2nd Floor: 1517 sq. ft, 3rd Floor: 0 sq. ft
Excluded: Basement 299 sq. ft, Utility 189 sq. ft, Undefined 17 sq. ft, Deck 214 sq. ft, Fireplace 21 sq. ft, Attic 1214 sq. ft, Walls: 379 sq. ft

Property summary



Home data report

**26 Flintlock Road, Salem, Rockingham County, New Hampshire,
United States, 03079**

 **1**
Half baths

 **1**
Garages

Home data report

26 Flintlock Road, Salem, Rockingham County, New Hampshire, United States, 03079



Room dimensions

Floor 1 Below grade

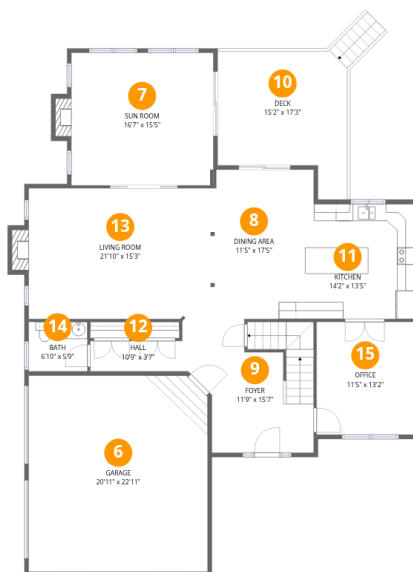
Total:896sqft

Excluded: 505sqft

#		Dimensions	sqft	Counted as living area
1	Room	15'10" x 15'1"	239 sq. ft	Yes
2	Basement	11'4" x 26'4"	298 sq. ft	No
3	Recreation Room	25'1" x 21'3"	534 sq. ft	Yes
4	Hall	14'7" x 12'3"	178 sq. ft	Yes
5	Utility	9'11" x 20'4"	202 sq. ft	No

Home data report

26 Flintlock Road, Salem, Rockingham County, New Hampshire, United States, 03079



Room dimensions

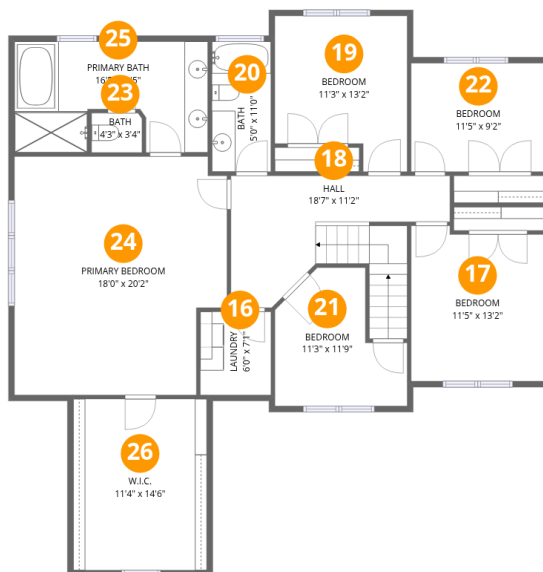
Floor 2

Total:1914sqft Excluded: 235sqft

#		Dimensions	sqft	Counted as living area
6	Garage	20'11" x 22'11"	479 sq. ft	Yes
7	Sun Room	16'7" x 15'5"	256 sq. ft	Yes
8	Dining Area	11'5" x 17'5"	199 sq. ft	Yes
9	Foyer	11'9" x 15'7"	184 sq. ft	Yes
10	Deck	15'2" x 17'3"	262 sq. ft	No
11	Kitchen	14'2" x 13'5"	190 sq. ft	Yes
12	Hall	10'9" x 3'7"	38 sq. ft	Yes
13	Living Room	21'10" x 15'3"	333 sq. ft	Yes
14	Bath	6'10" x 5'9"	40 sq. ft	Yes
15	Office	11'5" x 13'2"	150 sq. ft	Yes

Home data report

26 Flintlock Road, Salem, Rockingham County, New Hampshire, United States, 03079



Room dimensions

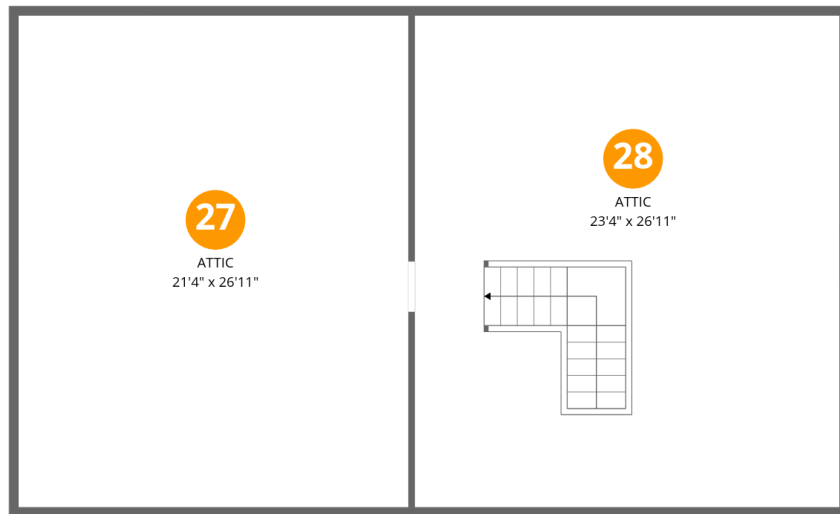
Floor 3

Total:1517sqft Excluded: 0sqft

#		Dimensions	sqft	Counted as living area
16	Laundry	6'0" x 7'1"	42 sq. ft	Yes
17	Bedroom	11'5" x 13'2"	150 sq. ft	Yes
18	Hall	18'7" x 11'2"	208 sq. ft	Yes
19	Bedroom	11'3" x 13'2"	148 sq. ft	Yes
20	Bath	5'0" x 11'0"	55 sq. ft	Yes
21	Bedroom	11'3" x 11'9"	132 sq. ft	Yes
22	Bedroom	11'5" x 9'2"	105 sq. ft	Yes
23	Bath	4'3" x 3'4"	14 sq. ft	Yes
24	Primary Bedroom	18'0" x 20'2"	363 sq. ft	Yes
25	Primary Bath	16'5" x 9'5"	154 sq. ft	Yes
26	W.I.C.	11'4" x 14'6"	164 sq. ft	Yes

Home data report

26 Flintlock Road, Salem, Rockingham County, New Hampshire, United States, 03079



Room dimensions

Floor 4

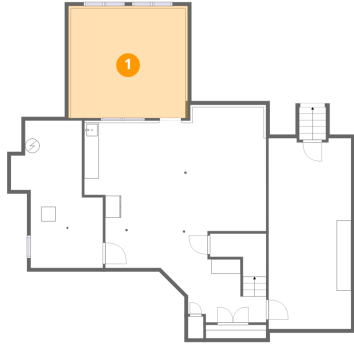
Total: 0sqft

Excluded: 1214sqft

#		Dimensions	sqft	Counted as living area
27	Attic	21'4" x 26'11"	575 sq. ft	No
28	Attic	23'4" x 26'11"	627 sq. ft	No

26 Flintlock Road, Salem, Rockingham County, New Hampshire,
United States, 03079

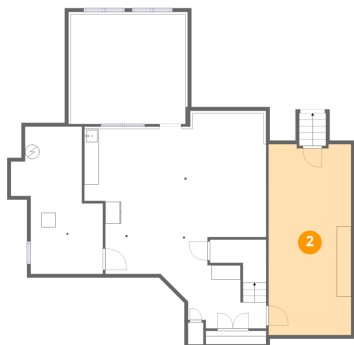
1 Floor 1 - Room



Dimensions: 15'10" x 15'1"
Area: 239 sq. ft
Counted as living area: Yes

Heated: Yes
Finished: Yes
Enclosed: Yes
Contiguous: Yes
Permitted: Yes
Wet space: No
Addition: No
Conversion: No

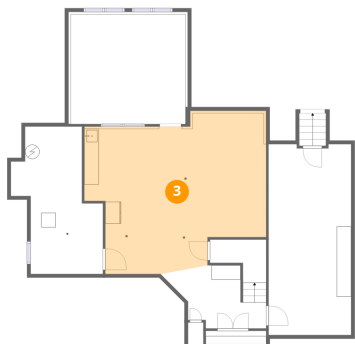
2 Floor 1 - Basement



Dimensions: 11'4" x 26'4"
Area: 298 sq. ft
Counted as living area: No

Heated: Yes
Finished: No
Enclosed: Yes
Contiguous: Yes
Permitted: Yes
Wet space: No
Addition: No
Conversion: No

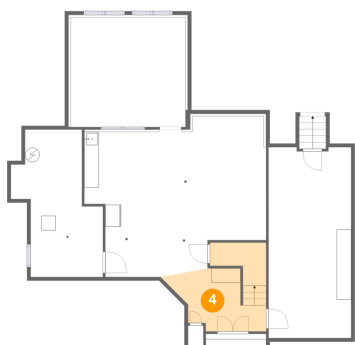
3 Floor 1 - Recreation Room



Dimensions: 25'1" x 21'3"
Area: 534 sq. ft
Counted as living area: Yes

Heated: Yes
Finished: Yes
Enclosed: Yes
Contiguous: Yes
Permitted: Yes
Wet space: No
Addition: No
Conversion: No

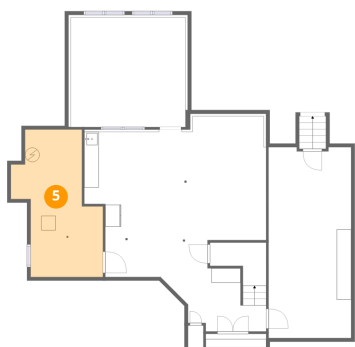
4 Floor 1 - Hall



Dimensions: 14'7" x 12'3"
Area: 178 sq. ft
Counted as living area: Yes

Heated: Yes
Finished: Yes
Enclosed: Yes
Contiguous: Yes
Permitted: Yes
Wet space: No
Addition: No
Conversion: No

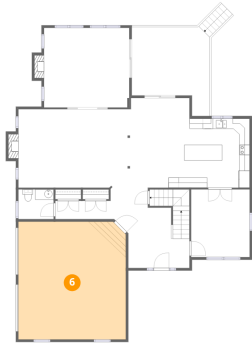
5 Floor 1 - Utility



Dimensions: 9'11" x 20'4"
Area: 202 sq. ft
Counted as living area: No

Heated: Yes
Finished: No
Enclosed: Yes
Contiguous: Yes
Permitted: Yes
Wet space: No
Addition: No
Conversion: No

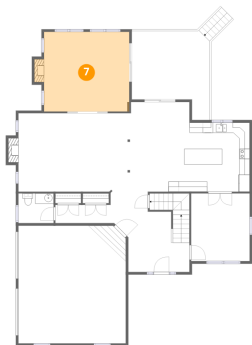
6 Floor 2 - Garage



Dimensions: 20'11" x 22'11"
Area: 479 sq. ft
Counted as living area: No

Heated: No
Finished: Yes
Enclosed: Yes
Contiguous: Yes
Permitted: Yes
Wet space: No
Addition: No
Conversion: No

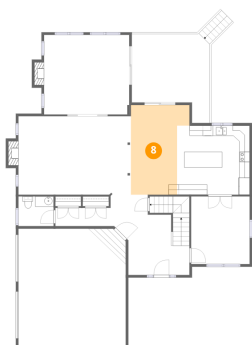
7 Floor 2 - Sun Room



Dimensions: 16'7" x 15'5"
Area: 256 sq. ft
Counted as living area: Yes

Heated: Yes
Finished: Yes
Enclosed: Yes
Contiguous: Yes
Permitted: Yes
Wet space: No
Addition: No
Conversion: No

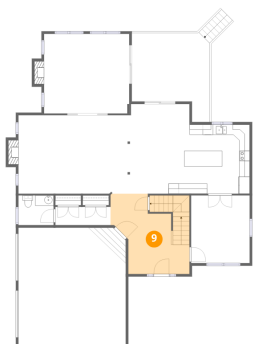
8 Floor 2 - Dining Area



Dimensions: 11'5" x 17'5"
Area: 199 sq. ft
Counted as living area: Yes

Heated: Yes
Finished: Yes
Enclosed: Yes
Contiguous: Yes
Permitted: Yes
Wet space: No
Addition: No
Conversion: No

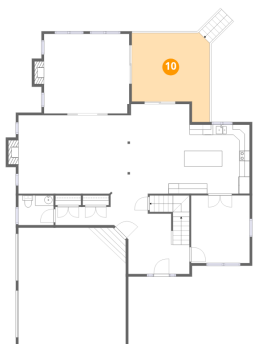
9 Floor 2 - Foyer



Dimensions: 11'9" x 15'7"
Area: 184 sq. ft
Counted as living area: Yes

Heated: Yes
Finished: Yes
Enclosed: Yes
Contiguous: Yes
Permitted: Yes
Wet space: No
Addition: No
Conversion: No

10 Floor 2 - Deck



Dimensions: 15'2" x 17'3"
Area: 262 sq. ft
Counted as living area: No

Heated: No
Finished: No
Enclosed: No
Contiguous: Yes
Permitted: Yes
Wet space: No
Addition: No
Conversion: No

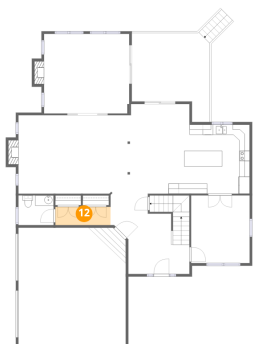
11 Floor 2 - Kitchen



Dimensions: 14'2" x 13'5"
Area: 190 sq. ft
Counted as living area: Yes

Heated: Yes
Finished: Yes
Enclosed: Yes
Contiguous: Yes
Permitted: Yes
Wet space: No
Addition: No
Conversion: No

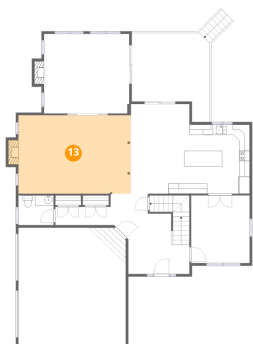
12 Floor 2 - Hall



Dimensions: 10'9" x 3'7"
Area: 38 sq. ft
Counted as living area: Yes

Heated: Yes
Finished: Yes
Enclosed: Yes
Contiguous: Yes
Permitted: Yes
Wet space: No
Addition: No
Conversion: No

13 Floor 2 - Living Room



Dimensions: 21'10" x 15'3"
Area: 333 sq. ft
Counted as living area: Yes

Heated: Yes
Finished: Yes
Enclosed: Yes
Contiguous: Yes
Permitted: Yes
Wet space: No
Addition: No
Conversion: No

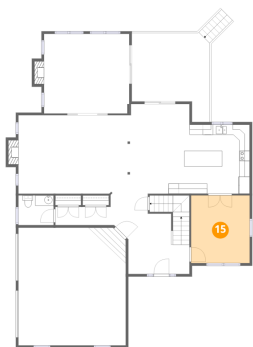
14 Floor 2 - Bath



Dimensions: 6'10" x 5'9"
Area: 40 sq. ft
Counted as living area: Yes

Heated: Yes
Finished: Yes
Enclosed: Yes
Contiguous: Yes
Permitted: Yes
Wet space: Yes
Addition: No
Conversion: No

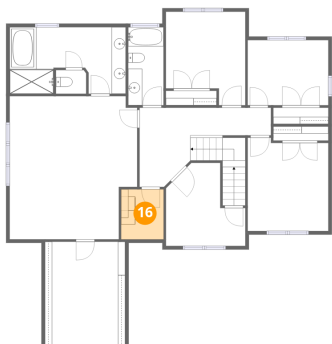
15 Floor 2 - Office



Dimensions: 11'5" x 13'2"
Area: 150 sq. ft
Counted as living area: Yes

Heated: Yes
Finished: Yes
Enclosed: Yes
Contiguous: Yes
Permitted: Yes
Wet space: No
Addition: No
Conversion: No

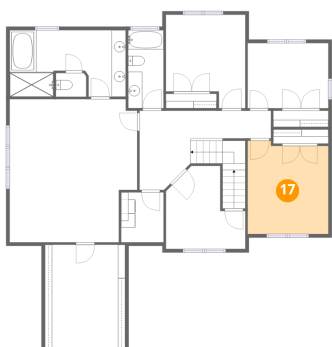
16 Floor 3 - Laundry



Dimensions: 6'0" x 7'1"
Area: 42 sq. ft
Counted as living area: Yes

Heated: Yes
Finished: Yes
Enclosed: Yes
Contiguous: Yes
Permitted: Yes
Wet space: No
Addition: No
Conversion: No

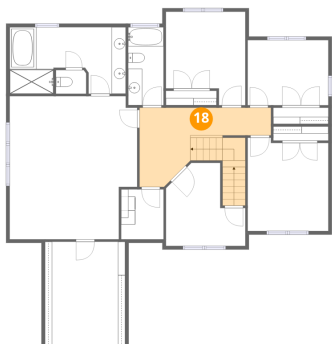
17 Floor 3 - Bedroom



Dimensions: 11'5" x 13'2"
Area: 150 sq. ft
Counted as living area: Yes

Heated: Yes
Finished: Yes
Enclosed: Yes
Contiguous: Yes
Permitted: Yes
Wet space: No
Addition: No
Conversion: No

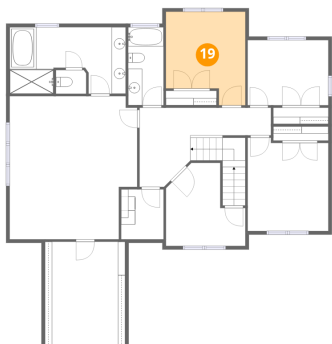
18 Floor 3 - Hall



Dimensions: 18'7" x 11'2"
Area: 208 sq. ft
Counted as living area: Yes

Heated: Yes
Finished: Yes
Enclosed: Yes
Contiguous: Yes
Permitted: Yes
Wet space: No
Addition: No
Conversion: No

19 Floor 3 - Bedroom



Dimensions: 11'3" x 13'2"
Area: 148 sq. ft
Counted as living area: Yes

Heated: Yes
Finished: Yes
Enclosed: Yes
Contiguous: Yes
Permitted: Yes
Wet space: No
Addition: No
Conversion: No

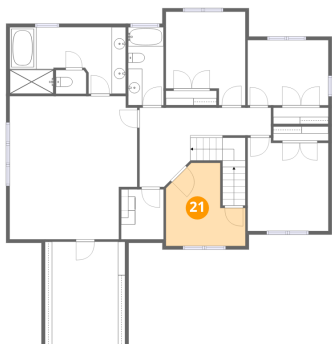
20 Floor 3 - Bath



Dimensions: 5'0" x 11'0"
Area: 55 sq. ft
Counted as living area: Yes

Heated: Yes
Finished: Yes
Enclosed: Yes
Contiguous: Yes
Permitted: Yes
Wet space: Yes
Addition: No
Conversion: No

21 Floor 3 - Bedroom



Dimensions: 11'3" x 11'9"
Area: 132 sq. ft
Counted as living area: Yes

Heated: Yes
Finished: Yes
Enclosed: Yes
Contiguous: Yes
Permitted: Yes
Wet space: No
Addition: No
Conversion: No

22 Floor 3 - Bedroom



Dimensions: 11'5" x 9'2"
Area: 105 sq. ft
Counted as living area: Yes

Heated: Yes
Finished: Yes
Enclosed: Yes
Contiguous: Yes
Permitted: Yes
Wet space: No
Addition: No
Conversion: No

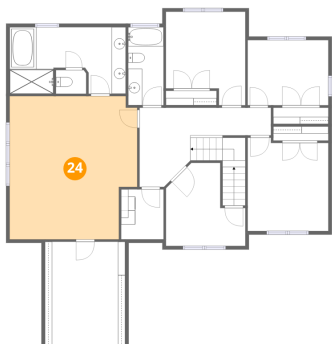
23 Floor 3 - Bath



Dimensions: 4'3" x 3'4"
Area: 14 sq. ft
Counted as living area: Yes

Heated: Yes
Finished: Yes
Enclosed: Yes
Contiguous: Yes
Permitted: Yes
Wet space: Yes
Addition: No
Conversion: No

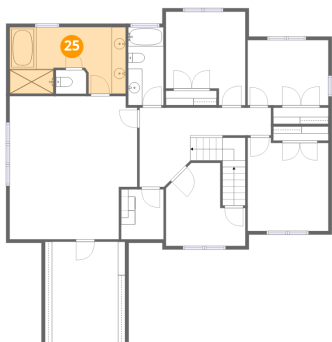
24 Floor 3 - Primary Bedroom



Dimensions: 18'0" x 20'2"
Area: 363 sq. ft
Counted as living area: Yes

Heated: Yes
Finished: Yes
Enclosed: Yes
Contiguous: Yes
Permitted: Yes
Wet space: No
Addition: No
Conversion: No

25 Floor 3 - Primary Bath



Dimensions: 16'5" x 9'5"
Area: 154 sq. ft
Counted as living area: Yes

Heated: Yes
Finished: Yes
Enclosed: Yes
Contiguous: Yes
Permitted: Yes
Wet space: Yes
Addition: No
Conversion: No

26 Floor 3 - W.I.C.

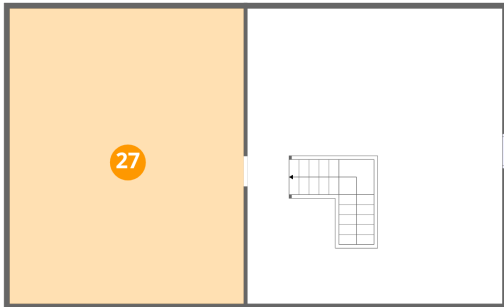


Dimensions: 11'4" x 14'6"
Area: 164 sq. ft
Counted as living area: Yes

Heated: Yes
Finished: Yes
Enclosed: Yes
Contiguous: Yes
Permitted: Yes
Wet space: No
Addition: No
Conversion: No

26 Flintlock Road, Salem, Rockingham County, New Hampshire,
United States, 03079

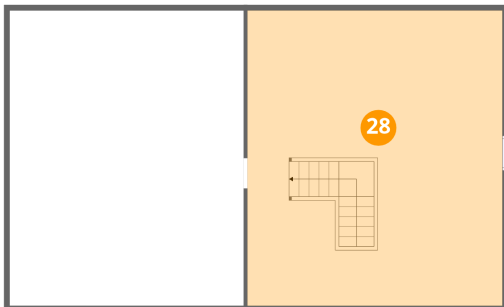
27 Floor 4 - Attic



Dimensions: 21'4" x 26'11"
Area: 575 sq. ft
Counted as living area: No

Heated: No
Finished: No
Enclosed: Yes
Contiguous: Yes
Permitted: Yes
Wet space: No
Addition: No
Conversion: No

28 Floor 4 - Attic



Dimensions: 23'4" x 26'11"
Area: 627 sq. ft
Counted as living area: No

Heated: No
Finished: No
Enclosed: Yes
Contiguous: Yes
Permitted: Yes
Wet space: No
Addition: No
Conversion: No