

Home data report

730 Woodchuck Lane, Toms River, Ocean County, New Jersey,
United States, 08755



Total Area: 5179 sq. ft

Basement: 1693 sq. ft, 1st Floor: 1891 sq. ft, 2nd Floor: 1595 sq. ft

Excluded: Utility 225 sq. ft, Garage 557 sq. ft, Fireplace 4 sq. ft, Open to below 17 sq. ft,
Walls: 361 sq. ft

Property summary



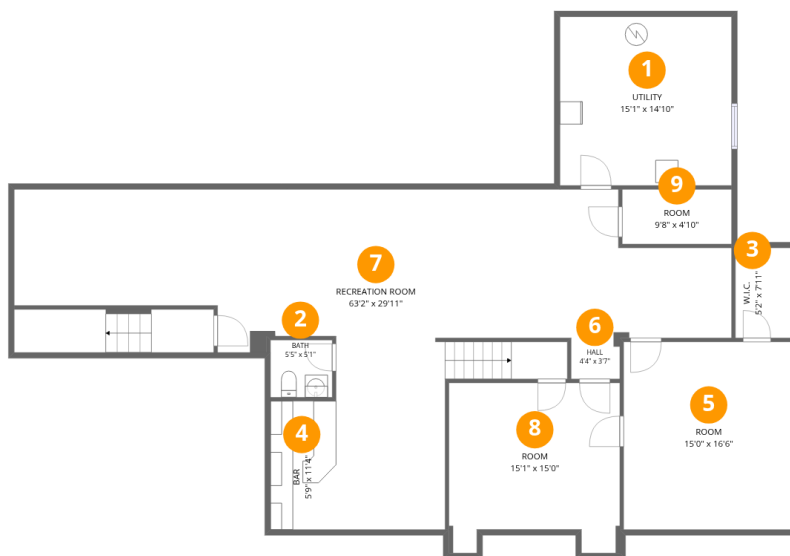
Home data report

**730 Woodchuck Lane, Toms River, Ocean County, New Jersey,
United States, 08755**

 **1**
Half baths

 **1**
Garages

730 Woodchuck Lane, Toms River, Ocean County, New Jersey, United States, 08755



Room dimensions

Floor 1 Below grade

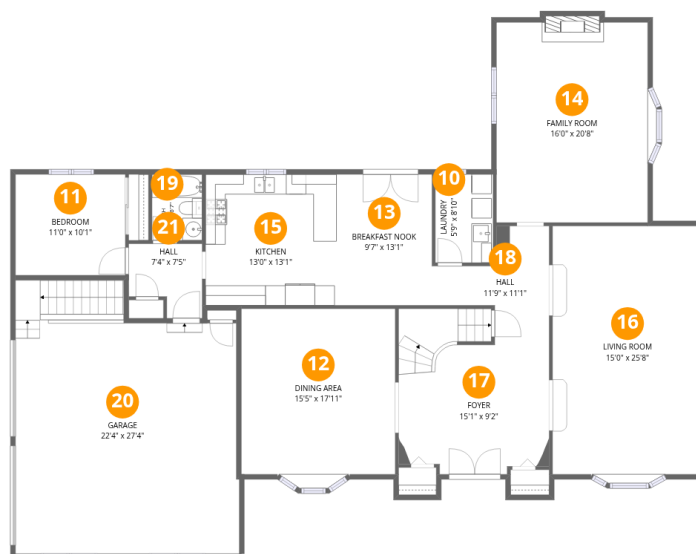
Total:1693sqft

Excluded: 225sqft

#		Dimensions	sqft	Counted as living area
1	Utility	15'1" x 14'10"	225 sq. ft	No
2	Bath	5'5" x 5'1"	27 sq. ft	Yes
3	W.I.C.	5'2" x 7'11"	41 sq. ft	Yes
4	Bar	5'9" x 11'4"	65 sq. ft	Yes
5	Room	15'0" x 16'6"	248 sq. ft	Yes
6	Hall	4'4" x 3'7"	15 sq. ft	Yes
7	Recreation Room	63'2" x 29'11"	926 sq. ft	Yes
8	Room	15'1" x 15'0"	206 sq. ft	Yes
9	Room	9'8" x 4'10"	46 sq. ft	Yes

Home data report

730 Woodchuck Lane, Toms River, Ocean County, New Jersey,
United States, 08755



Room dimensions

Floor 2

Total:1891sqft Excluded: 561sqft

#		Dimensions	sqft	Counted as living area
10	Laundry	5'9" x 8'10"	51 sq. ft	Yes
11	Bedroom	11'0" x 10'1"	111 sq. ft	Yes
12	Dining Area	15'5" x 17'11"	261 sq. ft	Yes
13	Breakfast Nook	9'7" x 13'1"	126 sq. ft	Yes
14	Family Room	16'0" x 20'8"	311 sq. ft	Yes
15	Kitchen	13'0" x 13'1"	170 sq. ft	Yes
16	Living Room	15'0" x 25'8"	377 sq. ft	Yes
17	Foyer	15'1" x 9'2"	224 sq. ft	Yes
18	Hall	11'9" x 11'1"	84 sq. ft	Yes
19	Bath	5'0" x 6'7"	33 sq. ft	Yes
20	Garage	22'4" x 27'4"	557 sq. ft	No

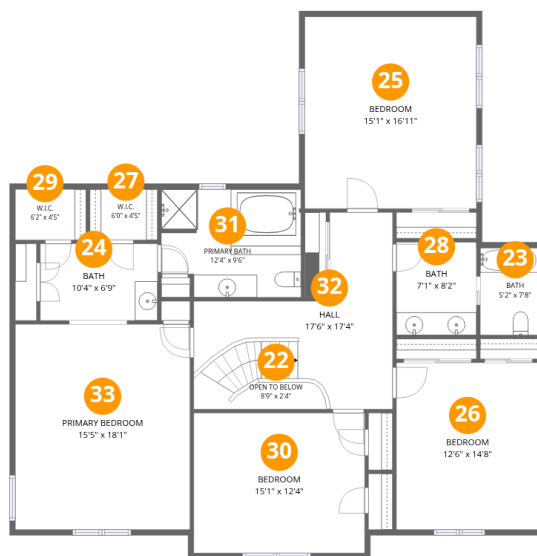
Home data report

**730 Woodchuck Lane, Toms River, Ocean County, New Jersey,
United States, 08755**

#		Dimensions	sqft	Counted as living area
21	Hall	7'4" x 7'5"	46 sq. ft	Yes

Home data report

730 Woodchuck Lane, Toms River, Ocean County, New Jersey, United States, 08755



Room dimensions

Floor 3

Total:1595sqft Excluded: 17sqft

#		Dimensions	sqft	Counted as living area
22	Open To Below	8'9" x 2'4"	17 sq. ft	No
23	Bath	5'2" x 7'8"	39 sq. ft	Yes
24	Bath	10'4" x 6'9"	70 sq. ft	Yes
25	Bedroom	15'1" x 16'11"	255 sq. ft	Yes
26	Bedroom	12'6" x 14'8"	184 sq. ft	Yes
27	W.I.C.	6'0" x 4'5"	27 sq. ft	Yes
28	Bath	7'1" x 8'2"	58 sq. ft	Yes
29	W.I.C.	6'2" x 4'5"	28 sq. ft	Yes
30	Bedroom	15'1" x 12'4"	186 sq. ft	Yes
31	Primary Bath	12'4" x 9'6"	110 sq. ft	Yes
32	Hall	17'6" x 17'4"	192 sq. ft	Yes

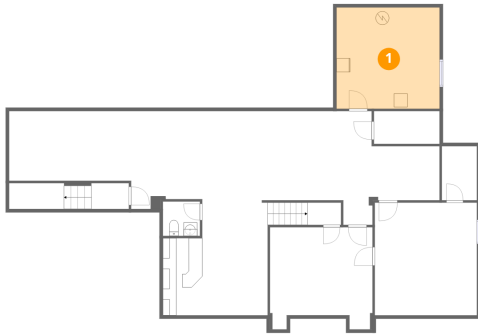
Home data report

**730 Woodchuck Lane, Toms River, Ocean County, New Jersey,
United States, 08755**

#		Dimensions	sqft	Counted as living area
33	Primary Bedroom	15'5" x 18'1"	278 sq. ft	Yes

730 Woodchuck Lane, Toms River, Ocean County, New Jersey,
United States, 08755

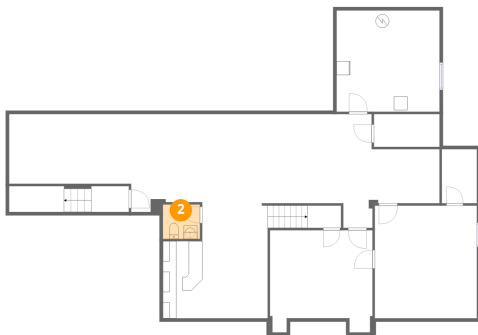
1 Floor 1 - Utility



Dimensions: 15'1" x 14'10"
Area: 225 sq. ft
Counted as living area: No

Heated: Yes
Finished: No
Enclosed: Yes
Contiguous: Yes
Permitted: Yes
Wet space: No
Addition: No
Conversion: No

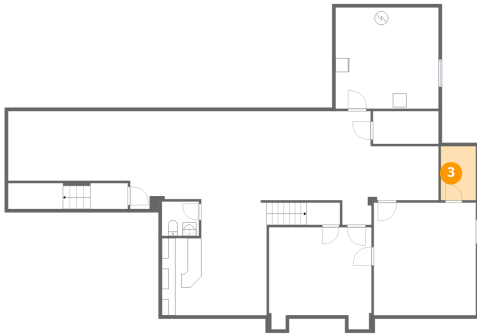
2 Floor 1 - Bath



Dimensions: 5'5" x 5'1"
Area: 27 sq. ft
Counted as living area: Yes

Heated: Yes
Finished: Yes
Enclosed: Yes
Contiguous: Yes
Permitted: Yes
Wet space: Yes
Addition: No
Conversion: No

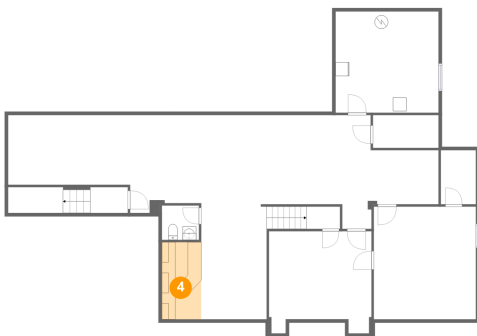
3 Floor 1 - W.I.C.



Dimensions: 5'2" x 7'11"
Area: 41 sq. ft
Counted as living area: Yes

Heated: Yes
Finished: Yes
Enclosed: Yes
Contiguous: Yes
Permitted: Yes
Wet space: No
Addition: No
Conversion: No

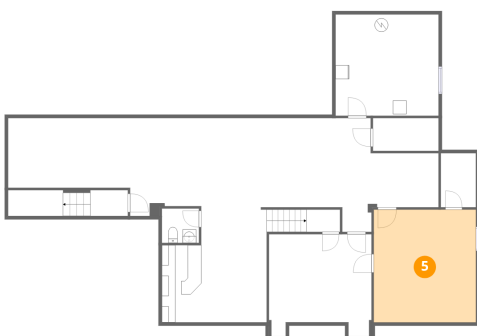
4 Floor 1 - Bar



Dimensions: 5'9" x 11'4"
Area: 65 sq. ft
Counted as living area: Yes

Heated: Yes
Finished: Yes
Enclosed: Yes
Contiguous: Yes
Permitted: Yes
Wet space: No
Addition: No
Conversion: No

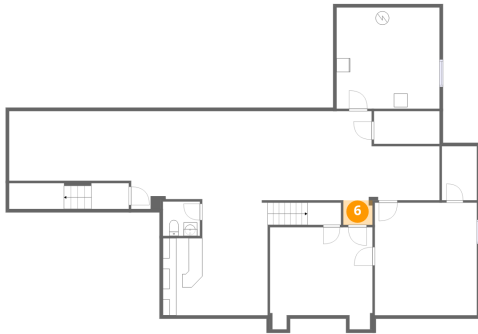
5 Floor 1 - Room



Dimensions: 15'0" x 16'6"
Area: 248 sq. ft
Counted as living area: Yes

Heated: Yes
Finished: Yes
Enclosed: Yes
Contiguous: Yes
Permitted: Yes
Wet space: No
Addition: No
Conversion: No

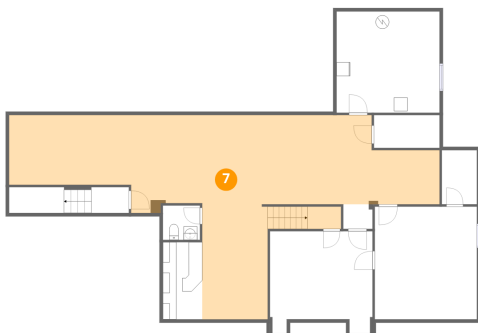
6 Floor 1 - Hall



Dimensions: 4'4" x 3'7"
Area: 15 sq. ft
Counted as living area: Yes

Heated: Yes
Finished: Yes
Enclosed: Yes
Contiguous: Yes
Permitted: Yes
Wet space: No
Addition: No
Conversion: No

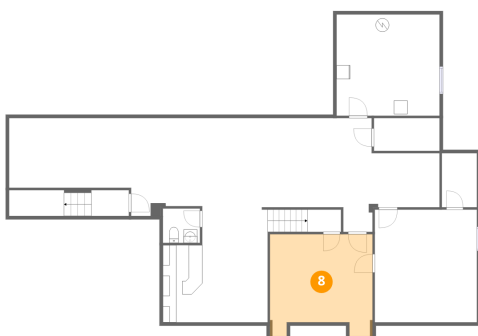
7 Floor 1 - Recreation Room



Dimensions: 63'2" x 29'11"
Area: 926 sq. ft
Counted as living area: Yes

Heated: Yes
Finished: Yes
Enclosed: Yes
Contiguous: Yes
Permitted: Yes
Wet space: No
Addition: No
Conversion: No

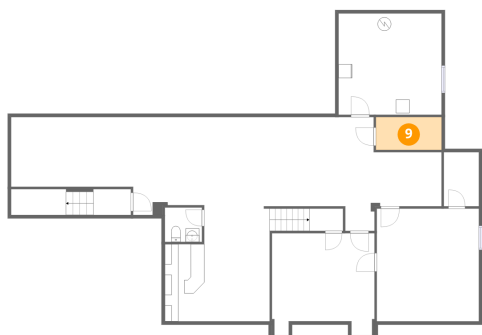
8 Floor 1 - Room



Dimensions: 15'1" x 15'0"
Area: 206 sq. ft
Counted as living area: Yes

Heated: Yes
Finished: Yes
Enclosed: Yes
Contiguous: Yes
Permitted: Yes
Wet space: No
Addition: No
Conversion: No

9 Floor 1 - Room



Dimensions: 9'8" x 4'10"
Area: 46 sq. ft
Counted as living area: Yes

Heated: Yes
Finished: Yes
Enclosed: Yes
Contiguous: Yes
Permitted: Yes
Wet space: No
Addition: No
Conversion: No

10 Floor 2 - Laundry



Dimensions: 5'9" x 8'10"
Area: 51 sq. ft
Counted as living area: Yes

Heated: Yes
Finished: Yes
Enclosed: Yes
Contiguous: Yes
Permitted: Yes
Wet space: No
Addition: No
Conversion: No

11 Floor 2 - Bedroom



Dimensions: 11'0" x 10'1"
Area: 111 sq. ft
Counted as living area: Yes

Heated: Yes
Finished: Yes
Enclosed: Yes
Contiguous: Yes
Permitted: Yes
Wet space: No
Addition: No
Conversion: No

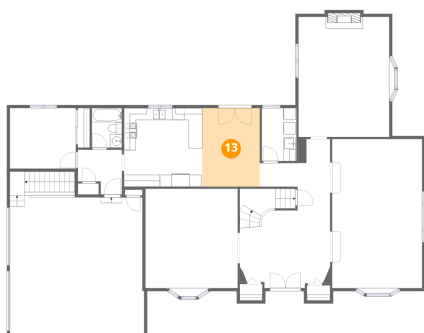
12 Floor 2 - Dining Area



Dimensions: 15'5" x 17'11"
Area: 261 sq. ft
Counted as living area: Yes

Heated: Yes
Finished: Yes
Enclosed: Yes
Contiguous: Yes
Permitted: Yes
Wet space: No
Addition: No
Conversion: No

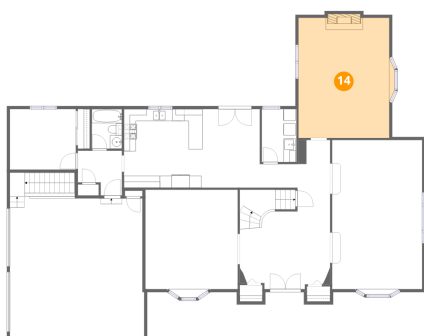
13 Floor 2 - Breakfast Nook



Dimensions: 9'7" x 13'1"
Area: 126 sq. ft
Counted as living area: Yes

Heated: Yes
Finished: Yes
Enclosed: Yes
Contiguous: Yes
Permitted: Yes
Wet space: No
Addition: No
Conversion: No

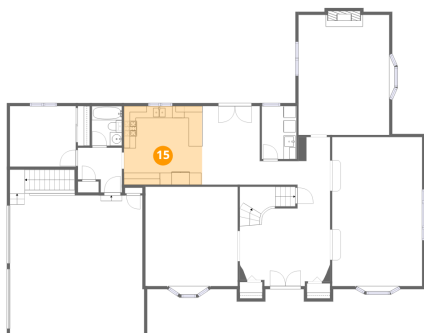
14 Floor 2 - Family Room



Dimensions: 16'0" x 20'8"
Area: 311 sq. ft
Counted as living area: Yes

Heated: Yes
Finished: Yes
Enclosed: Yes
Contiguous: Yes
Permitted: Yes
Wet space: No
Addition: No
Conversion: No

15 Floor 2 - Kitchen



Dimensions: 13'0" x 13'1"
Area: 170 sq. ft
Counted as living area: Yes

Heated: Yes
Finished: Yes
Enclosed: Yes
Contiguous: Yes
Permitted: Yes
Wet space: No
Addition: No
Conversion: No

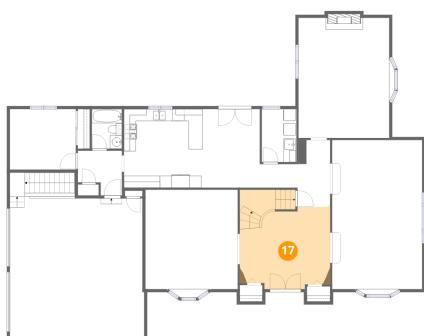
16 Floor 2 - Living Room



Dimensions: 15'0" x 25'8"
Area: 377 sq. ft
Counted as living area: Yes

Heated: Yes
Finished: Yes
Enclosed: Yes
Contiguous: Yes
Permitted: Yes
Wet space: No
Addition: No
Conversion: No

17 Floor 2 - Foyer

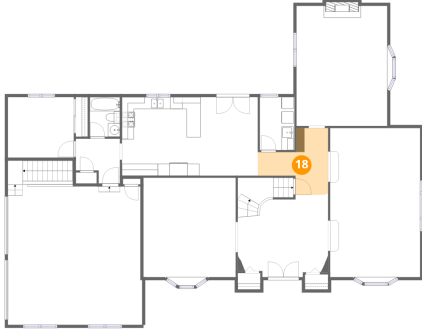


Dimensions: 15'1" x 9'2"
Area: 224 sq. ft
Counted as living area: Yes

Heated: Yes
Finished: Yes
Enclosed: Yes
Contiguous: Yes
Permitted: Yes
Wet space: No
Addition: No
Conversion: No

730 Woodchuck Lane, Toms River, Ocean County, New Jersey,
United States, 08755

18 Floor 2 - Hall



Dimensions: 11'9" x 11'1"
Area: 84 sq. ft
Counted as living area: Yes

Heated: Yes
Finished: Yes
Enclosed: Yes
Contiguous: Yes
Permitted: Yes
Wet space: No
Addition: No
Conversion: No

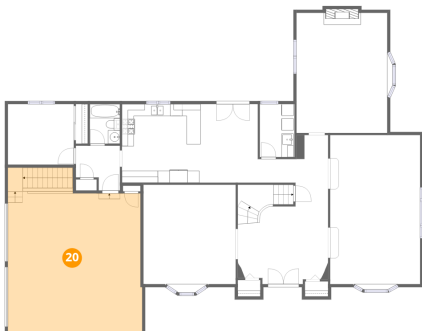
19 Floor 2 - Bath



Dimensions: 5'0" x 6'7"
Area: 33 sq. ft
Counted as living area: Yes

Heated: Yes
Finished: Yes
Enclosed: Yes
Contiguous: Yes
Permitted: Yes
Wet space: Yes
Addition: No
Conversion: No

20 Floor 2 - Garage



Dimensions: 22'4" x 27'4"
Area: 557 sq. ft
Counted as living area: No

Heated: No
Finished: No
Enclosed: Yes
Contiguous: Yes
Permitted: Yes
Wet space: No
Addition: No
Conversion: No

21 Floor 2 - Hall



Dimensions: 7'4" x 7'5"
Area: 46 sq. ft
Counted as living area: Yes

Heated: Yes
Finished: Yes
Enclosed: Yes
Contiguous: Yes
Permitted: Yes
Wet space: No
Addition: No
Conversion: No

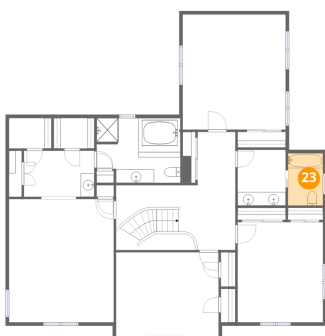
22 Floor 3 - Open To Below



Dimensions: 8'9" x 2'4"
Area: 17 sq. ft
Counted as living area: No

Heated: No
Finished: No
Enclosed: No
Contiguous: Yes
Permitted: No
Wet space: No
Addition: No
Conversion: No

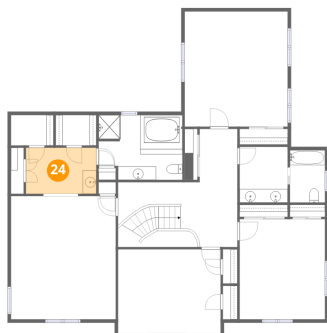
23 Floor 3 - Bath



Dimensions: 5'2" x 7'8"
Area: 39 sq. ft
Counted as living area: Yes

Heated: Yes
Finished: Yes
Enclosed: Yes
Contiguous: Yes
Permitted: Yes
Wet space: Yes
Addition: No
Conversion: No

24 Floor 3 - Bath



Dimensions: 10'4" x 6'9"
Area: 70 sq. ft
Counted as living area: Yes

Heated: Yes
Finished: Yes
Enclosed: Yes
Contiguous: Yes
Permitted: Yes
Wet space: Yes
Addition: No
Conversion: No

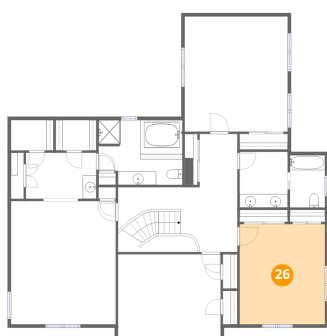
25 Floor 3 - Bedroom



Dimensions: 15'1" x 16'11"
Area: 255 sq. ft
Counted as living area: Yes

Heated: Yes
Finished: Yes
Enclosed: Yes
Contiguous: Yes
Permitted: Yes
Wet space: No
Addition: No
Conversion: No

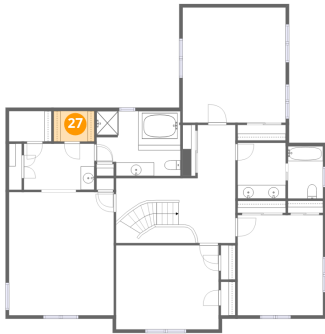
26 Floor 3 - Bedroom



Dimensions: 12'6" x 14'8"
Area: 184 sq. ft
Counted as living area: Yes

Heated: Yes
Finished: Yes
Enclosed: Yes
Contiguous: Yes
Permitted: Yes
Wet space: No
Addition: No
Conversion: No

27 Floor 3 - W.I.C.



Dimensions: 6'0" x 4'5"
Area: 27 sq. ft
Counted as living area: Yes

Heated: Yes
Finished: Yes
Enclosed: Yes
Contiguous: Yes
Permitted: Yes
Wet space: No
Addition: No
Conversion: No

28 Floor 3 - Bath



Dimensions: 7'1" x 8'2"
Area: 58 sq. ft
Counted as living area: Yes

Heated: Yes
Finished: Yes
Enclosed: Yes
Contiguous: Yes
Permitted: Yes
Wet space: Yes
Addition: No
Conversion: No

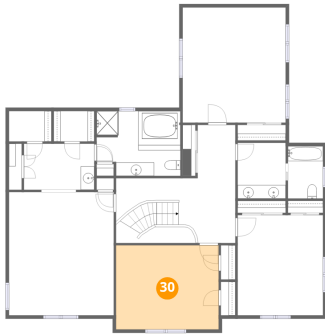
29 Floor 3 - W.I.C.



Dimensions: 6'2" x 4'5"
Area: 28 sq. ft
Counted as living area: Yes

Heated: Yes
Finished: Yes
Enclosed: Yes
Contiguous: Yes
Permitted: Yes
Wet space: No
Addition: No
Conversion: No

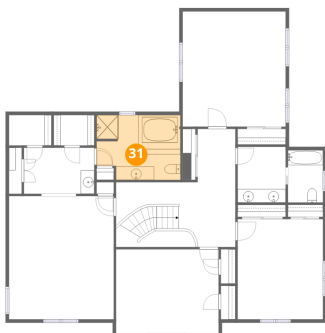
30 Floor 3 - Bedroom



Dimensions: 15'1" x 12'4"
Area: 186 sq. ft
Counted as living area: Yes

Heated: Yes
Finished: Yes
Enclosed: Yes
Contiguous: Yes
Permitted: Yes
Wet space: No
Addition: No
Conversion: No

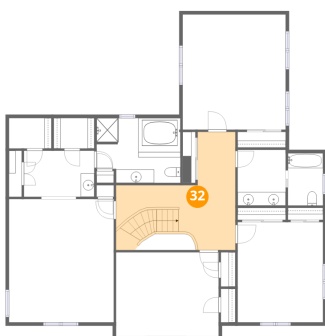
31 Floor 3 - Primary Bath



Dimensions: 12'4" x 9'6"
Area: 110 sq. ft
Counted as living area: Yes

Heated: Yes
Finished: Yes
Enclosed: Yes
Contiguous: Yes
Permitted: Yes
Wet space: Yes
Addition: No
Conversion: No

32 Floor 3 - Hall



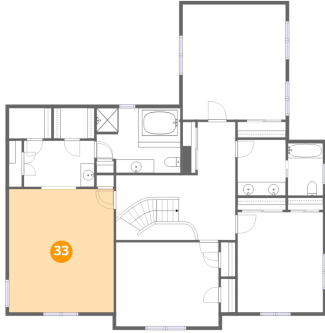
Dimensions: 17'6" x 17'4"
Area: 192 sq. ft
Counted as living area: Yes

Heated: Yes
Finished: Yes
Enclosed: Yes
Contiguous: Yes
Permitted: Yes
Wet space: No
Addition: No
Conversion: No

Home data report

730 Woodchuck Lane, Toms River, Ocean County, New Jersey,
United States, 08755

33 Floor 3 - Primary Bedroom



Dimensions: 15'5" x 18'1"
Area: 278 sq. ft
Counted as living area: Yes

Heated: Yes
Finished: Yes
Enclosed: Yes
Contiguous: Yes
Permitted: Yes
Wet space: No
Addition: No
Conversion: No