

Home data report

2484 E Copper Vly Wy, Green Valley, AZ, US

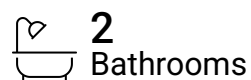


Total Area: 1811 sq. ft

1st Floor: 1811 sq. ft

Excluded: Garage 610 sq. ft, Walls: 138 sq. ft

Property summary



Home data report

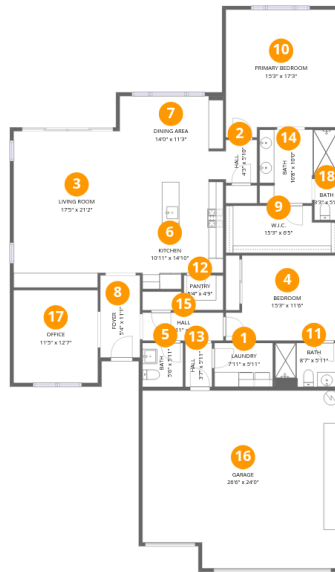
2484 E Copper Vly Wy, Green Valley, AZ, US

 **1**
Half baths

 **1**
Garages

Home data report

2484 E Copper Vly Wy, Green Valley, AZ, US



Room dimensions

Floor 1

Total: 1811 sqft

Excluded: 610 sqft

#		Dimensions	sqft	Counted as living area
1	Laundry	7'11" x 5'11"	47 sq. ft	Yes
2	Hall	4'3" x 5'10"	25 sq. ft	Yes
3	Living Room	17'5" x 21'2"	370 sq. ft	Yes
4	Bedroom	15'3" x 11'6"	175 sq. ft	Yes
5	Bath	5'6" x 5'11"	32 sq. ft	Yes
6	Kitchen	10'11" x 14'10"	162 sq. ft	Yes
7	Dining Area	14'0" x 11'3"	158 sq. ft	Yes
8	Foyer	5'4" x 11'1"	59 sq. ft	Yes
9	W.I.C.	15'3" x 6'5"	97 sq. ft	Yes
10	Primary Bedroom	15'3" x 17'3"	264 sq. ft	Yes
11	Bath	8'7" x 5'11"	51 sq. ft	Yes

Home data report

2484 E Copper Vly Wy,Green Valley,AZ,US

#		Dimensions	sqft	Counted as living area
12	Pantry	5'4" x 4'9"	25 sq. ft	Yes
13	Hall	3'7" x 5'11"	21 sq. ft	Yes
14	Bath	10'8" x 10'0"	107 sq. ft	Yes
15	Hall	10'11" x 3'9"	41 sq. ft	Yes
16	Garage	26'6" x 24'0"	638 sq. ft	No
17	Office	11'5" x 12'7"	143 sq. ft	Yes
18	Bath	3'3" x 5'8"	18 sq. ft	Yes

1 Floor 1 - Laundry



Dimensions: 7'11" x 5'11"
Area: 47 sq. ft
Counted as living area: Yes

Heated: Yes
Finished: Yes
Enclosed: Yes
Contiguous: Yes
Permitted: Yes
Wet space: No
Addition: No
Conversion: No

2 Floor 1 - Hall



Dimensions: 4'3" x 5'10"
Area: 25 sq. ft
Counted as living area: Yes

Heated: Yes
Finished: Yes
Enclosed: Yes
Contiguous: Yes
Permitted: Yes
Wet space: No
Addition: No
Conversion: No

3 Floor 1 - Living Room



Dimensions: 17'5" x 21'2"
Area: 370 sq. ft
Counted as living area: Yes

Heated: Yes
Finished: Yes
Enclosed: Yes
Contiguous: Yes
Permitted: Yes
Wet space: No
Addition: No
Conversion: No

4 Floor 1 - Bedroom



Dimensions: 15'3" x 11'6"
Area: 175 sq. ft
Counted as living area: Yes

Heated: Yes
Finished: Yes
Enclosed: Yes
Contiguous: Yes
Permitted: Yes
Wet space: No
Addition: No
Conversion: No

5 Floor 1 - Bath



Dimensions: 5'6" x 5'11"
Area: 32 sq. ft
Counted as living area: Yes

Heated: Yes
Finished: Yes
Enclosed: Yes
Contiguous: Yes
Permitted: Yes
Wet space: Yes
Addition: No
Conversion: No

6 Floor 1 - Kitchen



Dimensions: 10'11" x 14'10"
Area: 162 sq. ft
Counted as living area: Yes

Heated: Yes
Finished: Yes
Enclosed: Yes
Contiguous: Yes
Permitted: Yes
Wet space: No
Addition: No
Conversion: No

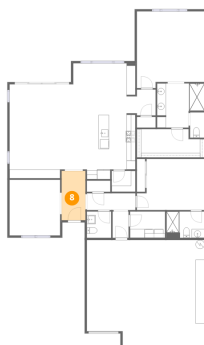
7 Floor 1 - Dining Area



Dimensions: 14'0" x 11'3"
Area: 158 sq. ft
Counted as living area: Yes

Heated: Yes
Finished: Yes
Enclosed: Yes
Contiguous: Yes
Permitted: Yes
Wet space: No
Addition: No
Conversion: No

8 Floor 1 - Foyer



Dimensions: 5'4" x 11'1"
Area: 59 sq. ft
Counted as living area: Yes

Heated: Yes
Finished: Yes
Enclosed: Yes
Contiguous: Yes
Permitted: Yes
Wet space: No
Addition: No
Conversion: No

9 Floor 1 - W.I.C.



Dimensions: 15'3" x 6'5"
Area: 97 sq. ft
Counted as living area: Yes

Heated: Yes
Finished: Yes
Enclosed: Yes
Contiguous: Yes
Permitted: Yes
Wet space: No
Addition: No
Conversion: No

10 Floor 1 - Primary Bedroom



Dimensions: 15'3" x 17'3"
Area: 264 sq. ft
Counted as living area: Yes

Heated: Yes
Finished: Yes
Enclosed: Yes
Contiguous: Yes
Permitted: Yes
Wet space: No
Addition: No
Conversion: No

11 Floor 1 - Bath



Dimensions: 8'7" x 5'11"
Area: 51 sq. ft
Counted as living area: Yes

Heated: Yes
Finished: Yes
Enclosed: Yes
Contiguous: Yes
Permitted: Yes
Wet space: Yes
Addition: No
Conversion: No

12 Floor 1 - Pantry



Dimensions: 5'4" x 4'9"
Area: 25 sq. ft
Counted as living area: Yes

Heated: Yes
Finished: Yes
Enclosed: Yes
Contiguous: Yes
Permitted: Yes
Wet space: No
Addition: No
Conversion: No

13 Floor 1 - Hall



Dimensions: 3'7" x 5'11"
Area: 21 sq. ft
Counted as living area: Yes

Heated: Yes
Finished: Yes
Enclosed: Yes
Contiguous: Yes
Permitted: Yes
Wet space: No
Addition: No
Conversion: No

14 Floor 1 - Bath



Dimensions: 10'8" x 10'0"
Area: 107 sq. ft
Counted as living area: Yes

Heated: Yes
Finished: Yes
Enclosed: Yes
Contiguous: Yes
Permitted: Yes
Wet space: Yes
Addition: No
Conversion: No

15 Floor 1 - Hall



Dimensions: 10'11" x 3'9"
Area: 41 sq. ft
Counted as living area: Yes

Heated: Yes
Finished: Yes
Enclosed: Yes
Contiguous: Yes
Permitted: Yes
Wet space: No
Addition: No
Conversion: No

16 Floor 1 - Garage



Dimensions: 26'6" x 24'0"
Area: 638 sq. ft
Counted as living area: No

Heated: No
Finished: No
Enclosed: Yes
Contiguous: Yes
Permitted: Yes
Wet space: No
Addition: No
Conversion: No

17 Floor 1 - Office



Dimensions: 11'5" x 12'7"
Area: 143 sq. ft
Counted as living area: Yes

Heated: Yes
Finished: Yes
Enclosed: Yes
Contiguous: Yes
Permitted: Yes
Wet space: No
Addition: No
Conversion: No

18 Floor 1 - Bath



Dimensions: 3'3" x 5'8"
Area: 18 sq. ft
Counted as living area: Yes

Heated: Yes
Finished: Yes
Enclosed: Yes
Contiguous: Yes
Permitted: Yes
Wet space: Yes
Addition: No
Conversion: No