

Home data report

# 509 W Missouri Ave, Phoenix, AZ, US



1st floor

**Total Area: 1738 sq. ft**

1st Floor: 1738 sq. ft

Excluded: Walls: 91 sq. ft

## Property summary

 **1** Floors

 **4** Bedrooms

 **2** Bathrooms

 **1** Half baths



## Room dimensions

Floor 1

Total: 1738 sqft Excluded: 0 sqft

#		Dimensions	sqft	Counted as living area
1	Laundry	8'0" x 6'1"	49 sq. ft	Yes
2	Bedroom	13'5" x 8'11"	119 sq. ft	Yes
3	Bedroom	13'5" x 10'0"	135 sq. ft	Yes
4	Hall	5'1" x 10'11"	38 sq. ft	Yes
5	Hall	6'3" x 12'2"	76 sq. ft	Yes
6	Kitchen	8'5" x 11'5"	94 sq. ft	Yes
7	Bedroom	13'5" x 9'4"	118 sq. ft	Yes
8	Primary Bath	8'7" x 11'10"	103 sq. ft	Yes
9	Bath	10'0" x 6'1"	52 sq. ft	Yes
10	Primary Bedroom	19'9" x 12'0"	237 sq. ft	Yes
11	Living Room	13'8" x 28'10"	364 sq. ft	Yes

Home data report

**509 W Missouri Ave,Phoenix,AZ,US**

#		Dimensions	sqft	Counted as living area
12	Dining Area	8'5" x 10'9"	90 sq. ft	Yes
13	W.I.C.	12'11" x 7'11"	102 sq. ft	Yes
14	Bath	3'2" x 7'11"	25 sq. ft	Yes

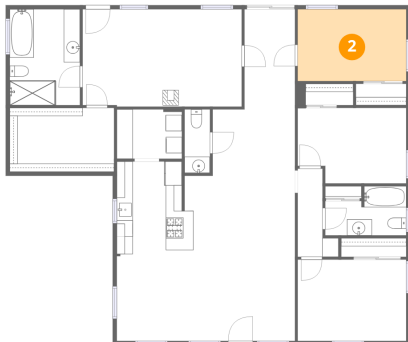
## 1 Floor 1 - Laundry



Dimensions: 8'0" x 6'1"  
Area: 49 sq. ft  
Counted as living area: Yes

Heated: Yes  
Finished: Yes  
Enclosed: Yes  
Contiguous: Yes  
Permitted: Yes  
Wet space: No  
Addition: No  
Conversion: No

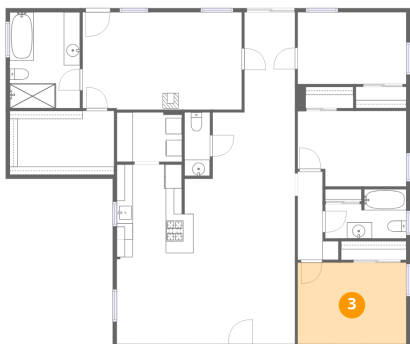
## 2 Floor 1 - Bedroom



Dimensions: 13'5" x 8'11"  
Area: 119 sq. ft  
Counted as living area: Yes

Heated: Yes  
Finished: Yes  
Enclosed: Yes  
Contiguous: Yes  
Permitted: Yes  
Wet space: No  
Addition: No  
Conversion: No

### 3 Floor 1 - Bedroom



Dimensions: 13'5" x 10'0"  
Area: 135 sq. ft  
Counted as living area: Yes

Heated: Yes  
Finished: Yes  
Enclosed: Yes  
Contiguous: Yes  
Permitted: Yes  
Wet space: No  
Addition: No  
Conversion: No

### 4 Floor 1 - Hall



Dimensions: 5'1" x 10'11"  
Area: 38 sq. ft  
Counted as living area: Yes

Heated: Yes  
Finished: Yes  
Enclosed: Yes  
Contiguous: Yes  
Permitted: Yes  
Wet space: No  
Addition: No  
Conversion: No

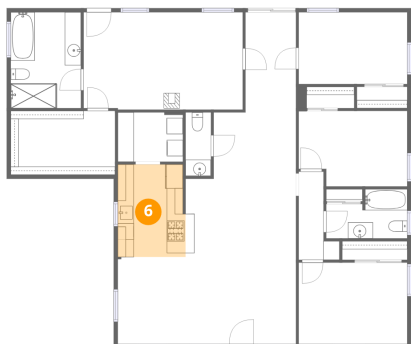
### 5 Floor 1 - Hall



Dimensions: 6'3" x 12'2"  
Area: 76 sq. ft  
Counted as living area: Yes

Heated: Yes  
Finished: Yes  
Enclosed: Yes  
Contiguous: Yes  
Permitted: Yes  
Wet space: No  
Addition: No  
Conversion: No

## 6 Floor 1 - Kitchen



Dimensions: 8'5" x 11'5"  
Area: 94 sq. ft  
Counted as living area: Yes

Heated: Yes  
Finished: Yes  
Enclosed: Yes  
Contiguous: Yes  
Permitted: Yes  
Wet space: No  
Addition: No  
Conversion: No

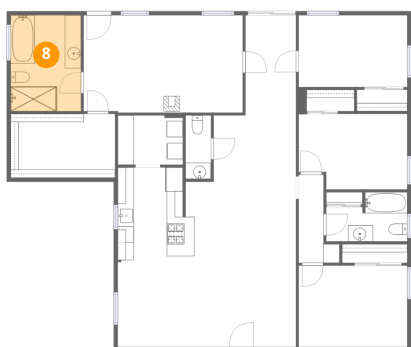
## 7 Floor 1 - Bedroom



Dimensions: 13'5" x 9'4"  
Area: 118 sq. ft  
Counted as living area: Yes

Heated: Yes  
Finished: Yes  
Enclosed: Yes  
Contiguous: Yes  
Permitted: Yes  
Wet space: No  
Addition: No  
Conversion: No

## 8 Floor 1 - Primary Bath



Dimensions: 8'7" x 11'10"  
Area: 103 sq. ft  
Counted as living area: Yes

Heated: Yes  
Finished: Yes  
Enclosed: Yes  
Contiguous: Yes  
Permitted: Yes  
Wet space: Yes  
Addition: No  
Conversion: No

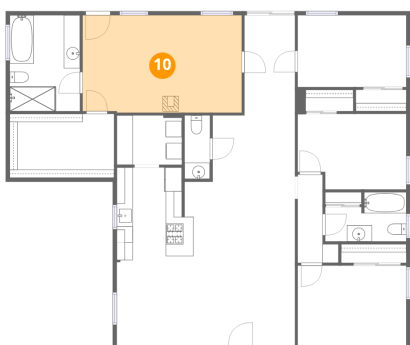
### 9 Floor 1 - Bath



Dimensions: 10'0" x 6'1"  
Area: 52 sq. ft  
Counted as living area: Yes

Heated: Yes  
Finished: Yes  
Enclosed: Yes  
Contiguous: Yes  
Permitted: Yes  
Wet space: Yes  
Addition: No  
Conversion: No

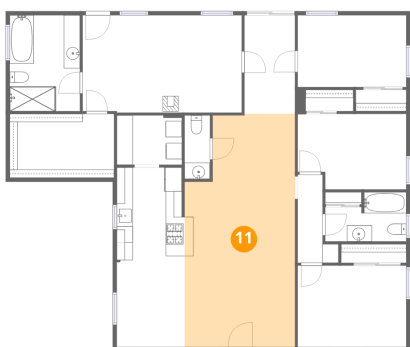
### 10 Floor 1 - Primary Bedroom



Dimensions: 19'9" x 12'0"  
Area: 237 sq. ft  
Counted as living area: Yes

Heated: Yes  
Finished: Yes  
Enclosed: Yes  
Contiguous: Yes  
Permitted: Yes  
Wet space: No  
Addition: No  
Conversion: No

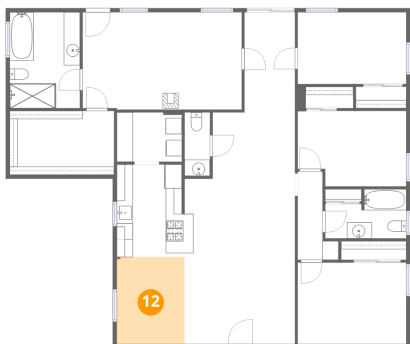
### 11 Floor 1 - Living Room



Dimensions: 13'8" x 28'10"  
Area: 364 sq. ft  
Counted as living area: Yes

Heated: Yes  
Finished: Yes  
Enclosed: Yes  
Contiguous: Yes  
Permitted: Yes  
Wet space: No  
Addition: No  
Conversion: No

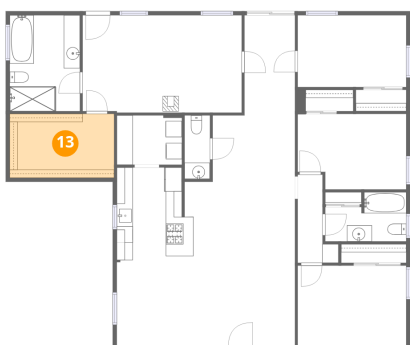
## 12 Floor 1 - Dining Area



Dimensions: 8'5" x 10'9"  
Area: 90 sq. ft  
Counted as living area: Yes

Heated: Yes  
Finished: Yes  
Enclosed: Yes  
Contiguous: Yes  
Permitted: Yes  
Wet space: No  
Addition: No  
Conversion: No

## 13 Floor 1 - W.I.C.



Dimensions: 12'11" x 7'11"  
Area: 102 sq. ft  
Counted as living area: Yes

Heated: Yes  
Finished: Yes  
Enclosed: Yes  
Contiguous: Yes  
Permitted: Yes  
Wet space: No  
Addition: No  
Conversion: No

## 14 Floor 1 - Bath



Dimensions: 3'2" x 7'11"  
Area: 25 sq. ft  
Counted as living area: Yes

Heated: Yes  
Finished: Yes  
Enclosed: Yes  
Contiguous: Yes  
Permitted: Yes  
Wet space: Yes  
Addition: No  
Conversion: No