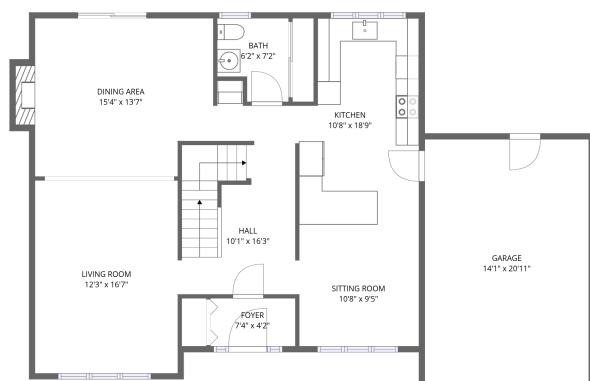
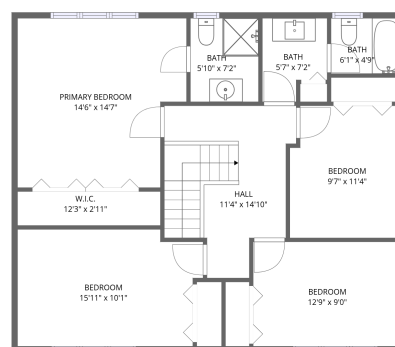


Home data report

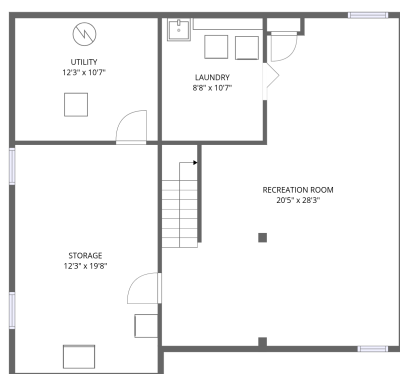
1912 Oakdean Crescent, Rothwell Heights - Beacon Hill North, Rothwell Heights, Gloucester, Ontario, Canada, K1J 6H3



1st floor



2nd floor



Basement

Total Area: 2384 sq. ft

Basement: 489 sq. ft, 1st Floor: 963 sq. ft, 2nd Floor: 932 sq. ft

Excluded: Storage 245 sq. ft, Laundry 96 sq. ft, Utility 130 sq. ft, Garage 295 sq. ft,
Fireplace 10 sq. ft, Walls: 215 sq. ft

Property summary



3 Floors



4 Bedrooms



2 Bathrooms

Home data report

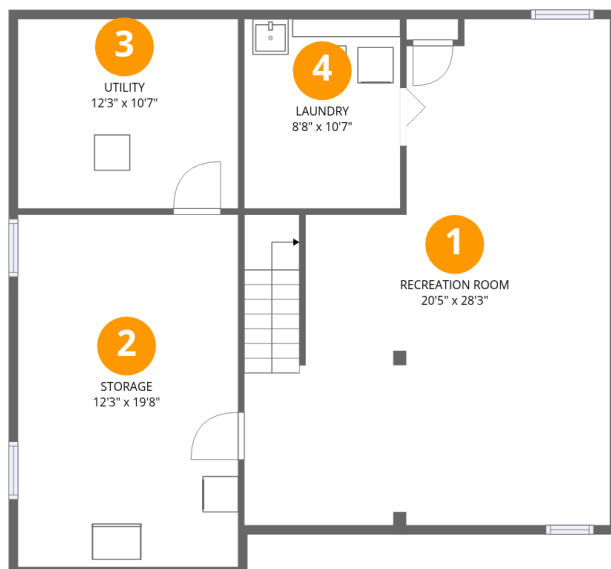
**1912 Oakdean Crescent, Rothwell Heights - Beacon Hill North,
Rothwell Heights, Gloucester, Ontario, Canada, K1J 6H3**

 **1**
Half baths

 **1**
Garages

Home data report

1912 Oakdean Crescent, Rothwell Heights - Beacon Hill North,
Rothwell Heights, Gloucester, Ontario, Canada, K1J 6H3



Room dimensions

Floor 1 Below grade

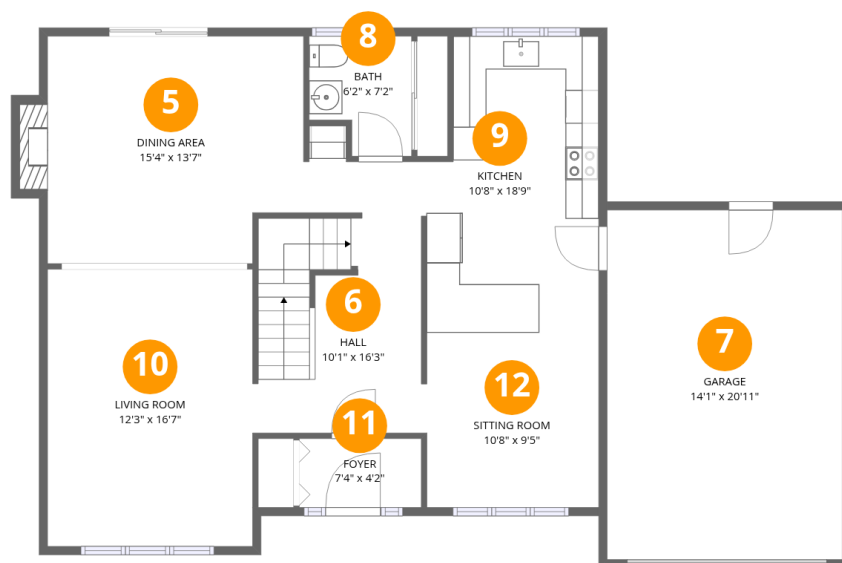
Total:489sqft

Excluded: 471sqft

#		Dimensions	sqft	Counted as living area
1	Recreation Room	20'5" x 28'3"	576 sq. ft	Yes
2	Storage	12'3" x 19'8"	241 sq. ft	No
3	Utility	12'3" x 10'7"	130 sq. ft	No
4	Laundry	8'8" x 10'7"	92 sq. ft	No

Home data report

1912 Oakdean Crescent, Rothwell Heights - Beacon Hill North,
Rothwell Heights, Gloucester, Ontario, Canada, K1J 6H3



Room dimensions

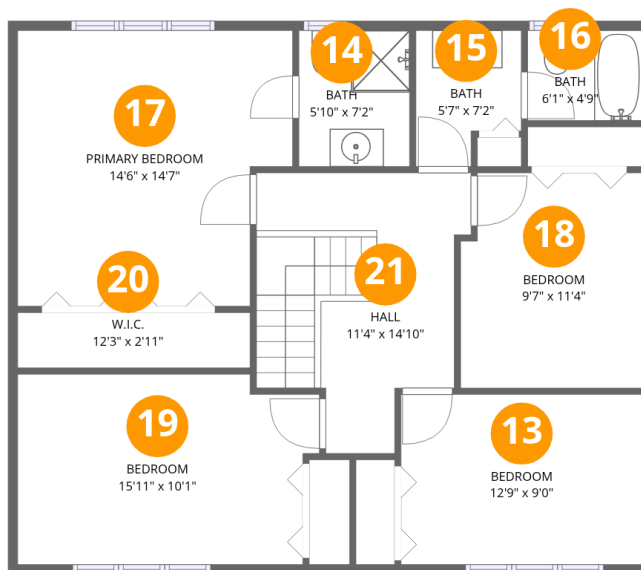
Floor 2

Total:963sqft Excluded: 305sqft

#		Dimensions	sqft	Counted as living area
5	Dining Area	15'4" x 13'7"	209 sq. ft	Yes
6	Hall	10'1" x 16'3"	164 sq. ft	Yes
7	Garage	14'1" x 20'11"	295 sq. ft	No
8	Bath	6'2" x 7'2"	44 sq. ft	Yes
9	Kitchen	10'8" x 18'9"	200 sq. ft	Yes
10	Living Room	12'3" x 16'7"	204 sq. ft	Yes
11	Foyer	7'4" x 4'2"	30 sq. ft	Yes
12	Sitting Room	10'8" x 9'5"	100 sq. ft	Yes

Home data report

**1912 Oakdean Crescent, Rothwell Heights - Beacon Hill North,
Rothwell Heights, Gloucester, Ontario, Canada, K1J 6H3**



Room dimensions

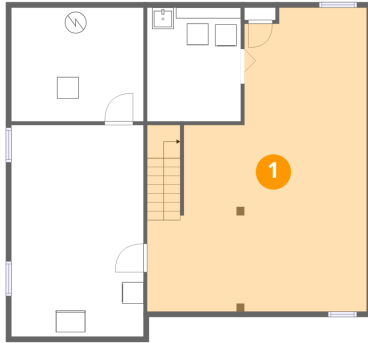
Floor 3

Total:932sqft Excluded: 0sqft

#		Dimensions	sqft	Counted as living area
13	Bedroom	12'9" x 9'0"	115 sq. ft	Yes
14	Bath	5'10" x 7'2"	42 sq. ft	Yes
15	Bath	5'7" x 7'2"	40 sq. ft	Yes
16	Bath	6'1" x 4'9"	29 sq. ft	Yes
17	Primary Bedroom	14'6" x 14'7"	212 sq. ft	Yes
18	Bedroom	9'7" x 11'4"	109 sq. ft	Yes
19	Bedroom	15'11" x 10'1"	160 sq. ft	Yes
20	W.I.C.	12'3" x 2'11"	36 sq. ft	Yes
21	Hall	11'4" x 14'10"	168 sq. ft	Yes

1912 Oakdean Crescent, Rothwell Heights - Beacon Hill North,
Rothwell Heights, Gloucester, Ontario, Canada, K1J 6H3

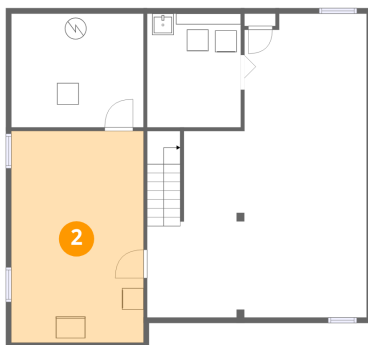
1 Floor 1 - Recreation Room



Dimensions: 20'5" x 28'3"
Area: 576 sq. ft
Counted as living area: No

Heated: Yes
Finished: Yes
Enclosed: Yes
Contiguous: No
Permitted: Yes
Wet space: No
Addition: No
Conversion: No

2 Floor 1 - Storage

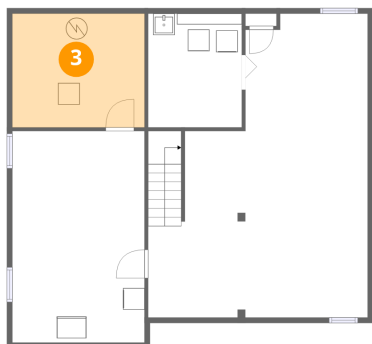


Dimensions: 12'3" x 19'8"
Area: 241 sq. ft
Counted as living area: No

Heated: No
Finished: No
Enclosed: No
Contiguous: Yes
Permitted: Yes
Wet space: No
Addition: No
Conversion: No

1912 Oakdean Crescent, Rothwell Heights - Beacon Hill North, Rothwell Heights, Gloucester, Ontario, Canada, K1J 6H3

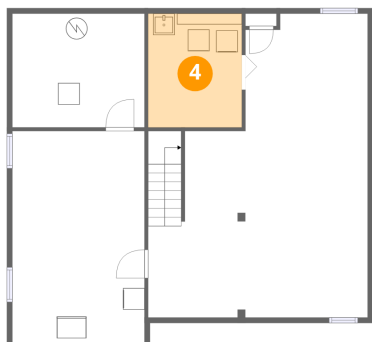
3 Floor 1 - Utility



Dimensions: 12'3" x 10'7"
Area: 130 sq. ft
Counted as living area: No

Heated: Yes
Finished: No
Enclosed: Yes
Contiguous: Yes
Permitted: Yes
Wet space: No
Addition: No
Conversion: No

4 Floor 1 - Laundry



Dimensions: 8'8" x 10'7"
Area: 92 sq. ft
Counted as living area: No

Heated: Yes
Finished: No
Enclosed: Yes
Contiguous: Yes
Permitted: Yes
Wet space: No
Addition: No
Conversion: No

5 Floor 2 - Dining Area

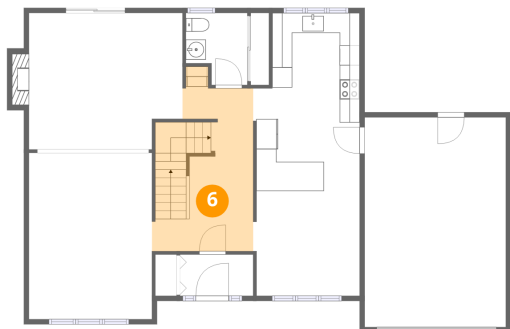


Dimensions: 15'4" x 13'7"
Area: 209 sq. ft
Counted as living area: Yes

Heated: Yes
Finished: Yes
Enclosed: Yes
Contiguous: Yes
Permitted: Yes
Wet space: No
Addition: No
Conversion: No

1912 Oakdean Crescent, Rothwell Heights - Beacon Hill North,
Rothwell Heights, Gloucester, Ontario, Canada, K1J 6H3

6 Floor 2 - Hall



Dimensions: 10'1" x 16'3"
Area: 164 sq. ft
Counted as living area: Yes

Heated: Yes
Finished: Yes
Enclosed: Yes
Contiguous: Yes
Permitted: Yes
Wet space: No
Addition: No
Conversion: No

7 Floor 2 - Garage



Dimensions: 14'1" x 20'11"
Area: 295 sq. ft
Counted as living area: No

Heated: No
Finished: No
Enclosed: Yes
Contiguous: Yes
Permitted: Yes
Wet space: No
Addition: No
Conversion: No

8 Floor 2 - Bath

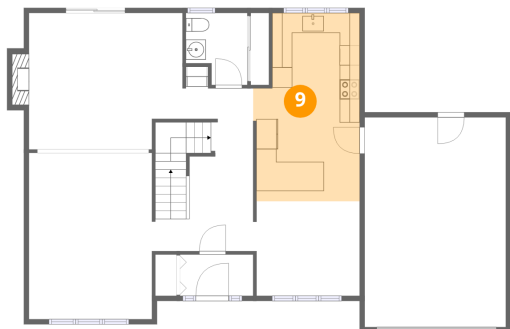


Dimensions: 6'2" x 7'2"
Area: 44 sq. ft
Counted as living area: Yes

Heated: Yes
Finished: Yes
Enclosed: Yes
Contiguous: Yes
Permitted: Yes
Wet space: Yes
Addition: No
Conversion: No

1912 Oakdean Crescent, Rothwell Heights - Beacon Hill North,
Rothwell Heights, Gloucester, Ontario, Canada, K1J 6H3

9 Floor 2 - Kitchen



Dimensions: 10'8" x 18'9"
Area: 200 sq. ft
Counted as living area: Yes

Heated: Yes
Finished: Yes
Enclosed: Yes
Contiguous: Yes
Permitted: Yes
Wet space: No
Addition: No
Conversion: No

10 Floor 2 - Living Room



Dimensions: 12'3" x 16'7"
Area: 204 sq. ft
Counted as living area: Yes

Heated: Yes
Finished: Yes
Enclosed: Yes
Contiguous: Yes
Permitted: Yes
Wet space: No
Addition: No
Conversion: No

11 Floor 2 - Foyer

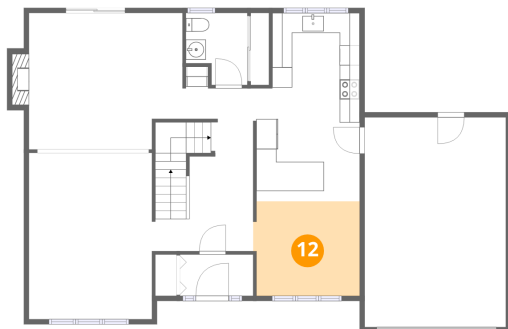


Dimensions: 7'4" x 4'2"
Area: 30 sq. ft
Counted as living area: Yes

Heated: Yes
Finished: Yes
Enclosed: Yes
Contiguous: Yes
Permitted: Yes
Wet space: No
Addition: No
Conversion: No

1912 Oakdean Crescent, Rothwell Heights - Beacon Hill North, Rothwell Heights, Gloucester, Ontario, Canada, K1J 6H3

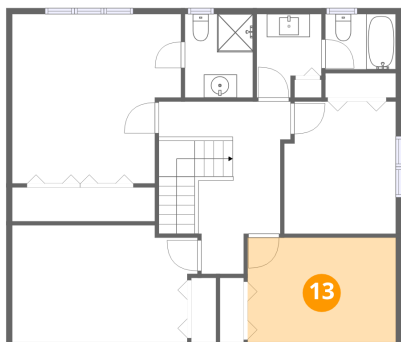
12 Floor 2 - Sitting Room



Dimensions: 10'8" x 9'5"
Area: 100 sq. ft
Counted as living area: Yes

Heated: Yes
Finished: Yes
Enclosed: Yes
Contiguous: Yes
Permitted: Yes
Wet space: No
Addition: No
Conversion: No

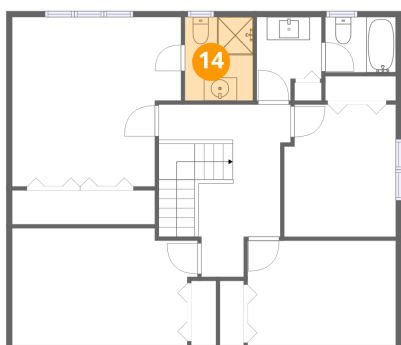
13 Floor 3 - Bedroom



Dimensions: 12'9" x 9'0"
Area: 115 sq. ft
Counted as living area: Yes

Heated: Yes
Finished: Yes
Enclosed: Yes
Contiguous: Yes
Permitted: Yes
Wet space: No
Addition: No
Conversion: No

14 Floor 3 - Bath

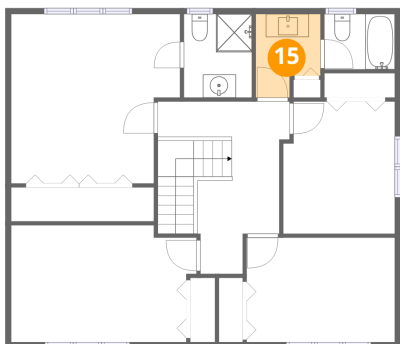


Dimensions: 5'10" x 7'2"
Area: 42 sq. ft
Counted as living area: Yes

Heated: Yes
Finished: Yes
Enclosed: Yes
Contiguous: Yes
Permitted: Yes
Wet space: Yes
Addition: No
Conversion: No

1912 Oakdean Crescent, Rothwell Heights - Beacon Hill North,
Rothwell Heights, Gloucester, Ontario, Canada, K1J 6H3

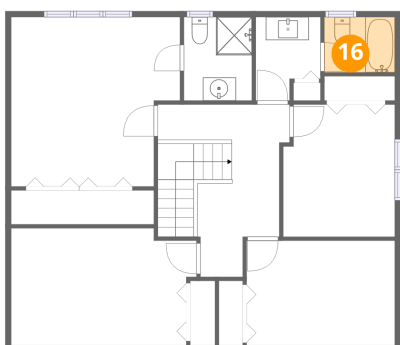
15 Floor 3 - Bath



Dimensions: 5'7" x 7'2"
Area: 40 sq. ft
Counted as living area: Yes

Heated: Yes
Finished: Yes
Enclosed: Yes
Contiguous: Yes
Permitted: Yes
Wet space: Yes
Addition: No
Conversion: No

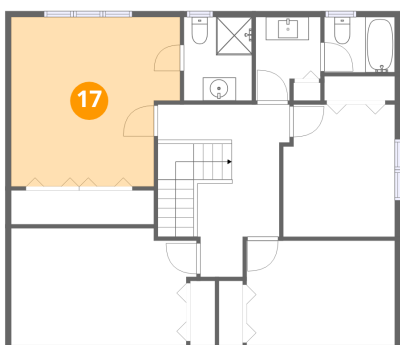
16 Floor 3 - Bath



Dimensions: 6'1" x 4'9"
Area: 29 sq. ft
Counted as living area: Yes

Heated: Yes
Finished: Yes
Enclosed: Yes
Contiguous: Yes
Permitted: Yes
Wet space: Yes
Addition: No
Conversion: No

17 Floor 3 - Primary Bedroom

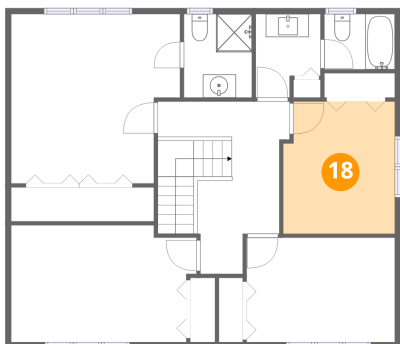


Dimensions: 14'6" x 14'7"
Area: 212 sq. ft
Counted as living area: Yes

Heated: Yes
Finished: Yes
Enclosed: Yes
Contiguous: Yes
Permitted: Yes
Wet space: No
Addition: No
Conversion: No

1912 Oakdean Crescent, Rothwell Heights - Beacon Hill North,
Rothwell Heights, Gloucester, Ontario, Canada, K1J 6H3

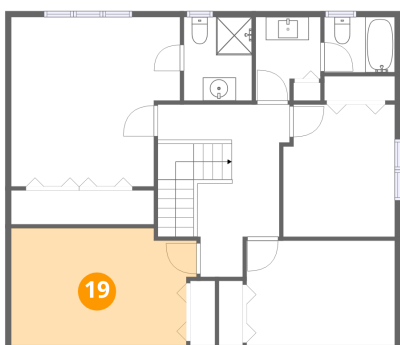
18 Floor 3 - Bedroom



Dimensions: 9'7" x 11'4"
Area: 109 sq. ft
Counted as living area: Yes

Heated: Yes
Finished: Yes
Enclosed: Yes
Contiguous: Yes
Permitted: Yes
Wet space: No
Addition: No
Conversion: No

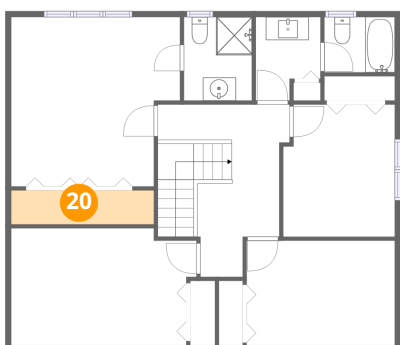
19 Floor 3 - Bedroom



Dimensions: 15'11" x 10'1"
Area: 160 sq. ft
Counted as living area: Yes

Heated: Yes
Finished: Yes
Enclosed: Yes
Contiguous: Yes
Permitted: Yes
Wet space: No
Addition: No
Conversion: No

20 Floor 3 - W.I.C.

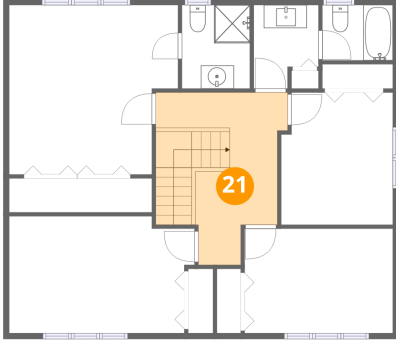


Dimensions: 12'3" x 2'11"
Area: 36 sq. ft
Counted as living area: Yes

Heated: Yes
Finished: Yes
Enclosed: Yes
Contiguous: Yes
Permitted: Yes
Wet space: No
Addition: No
Conversion: No

**1912 Oakdean Crescent, Rothwell Heights - Beacon Hill North,
Rothwell Heights, Gloucester, Ontario, Canada, K1J 6H3**

21 Floor 3 - Hall



Dimensions: 11'4" x 14'10"
Area: 168 sq. ft
Counted as living area: Yes

Heated: Yes
Finished: Yes
Enclosed: Yes
Contiguous: Yes
Permitted: Yes
Wet space: No
Addition: No
Conversion: No