

## Home data report

137 Coyles Drive, Ashton, Lanark County, Ontario, Canada, K0A 1B0



**Total Area: 3268 sq. ft**

Basement: 1212 sq. ft, 1st Floor: 2056 sq. ft

Excluded: Utility 656 sq. ft, Garage 892 sq. ft, Screened porch 239 sq. ft, Walls: 287 sq. ft

## Property summary



Home data report

**137 Coyles Drive, Ashton, Lanark County, Ontario, Canada, K0A  
1B0**



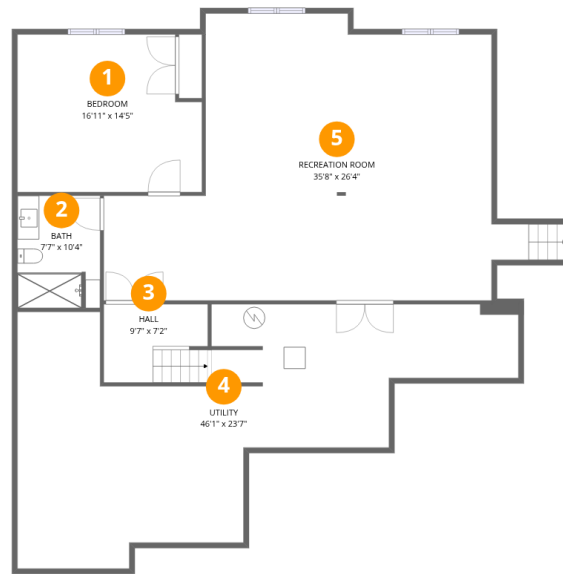
**1**  
Half baths



**1**  
Garages

## Home data report

137 Coyles Drive, Ashton, Lanark County, Ontario, Canada, K0A 1B0



## Room dimensions

Floor 1 Below grade

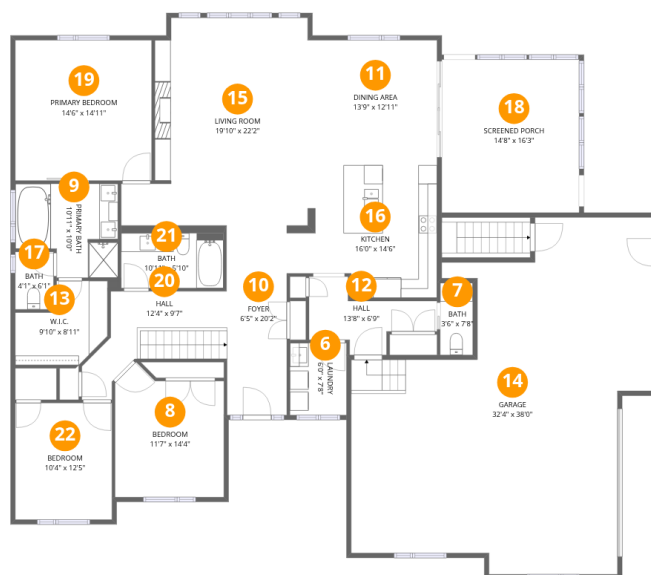
Total:1212sqft

Excluded: 656sqft

#		Dimensions	sqft	Counted as living area
1	Bedroom	16'11" x 14'5"	244 sq. ft	Yes
2	Bath	7'7" x 10'4"	79 sq. ft	Yes
3	Hall	9'7" x 7'2"	68 sq. ft	Yes
4	Utility	46'1" x 23'7"	1088 sq. ft	No
5	Recreation Room	35'8" x 26'4"	939 sq. ft	Yes

Home data report

137 Coyles Drive, Ashton, Lanark County, Ontario, Canada, K0A 1B0



Room dimensions

Floor 2

Total:2056sqft

Excluded: 1131sqft

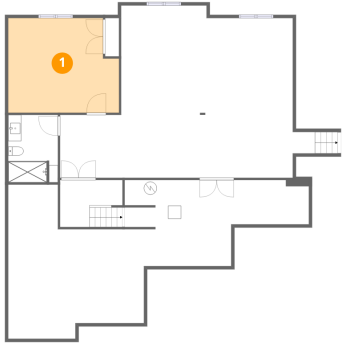
#		Dimensions	sqft	Counted as living area
6	Laundry	6'0" x 7'8"	46 sq. ft	Yes
7	Bath	3'6" x 7'8"	27 sq. ft	Yes
8	Bedroom	11'7" x 14'4"	167 sq. ft	Yes
9	Primary Bath	10'11" x 10'0"	109 sq. ft	Yes
10	Foyer	6'5" x 20'2"	130 sq. ft	Yes
11	Dining Area	13'9" x 12'11"	178 sq. ft	Yes
12	Hall	13'8" x 6'9"	92 sq. ft	Yes
13	W.I.C.	9'10" x 8'11"	88 sq. ft	Yes
14	Garage	32'4" x 38'0"	1229 sq. ft	No
15	Living Room	19'10" x 22'2"	440 sq. ft	Yes
16	Kitchen	16'0" x 14'6"	232 sq. ft	Yes

Home data report

**137 Coyles Drive, Ashton, Lanark County, Ontario, Canada, K0A 1B0**

#		Dimensions	sqft	Counted as living area
17	Bath	4'1" x 6'1"	25 sq. ft	Yes
18	Screened Porch	14'8" x 16'3"	238 sq. ft	No
19	Primary Bedroom	14'6" x 14'11"	217 sq. ft	Yes
20	Hall	12'4" x 9'7"	118 sq. ft	Yes
21	Bath	10'11" x 5'10"	64 sq. ft	Yes
22	Bedroom	10'4" x 12'5"	128 sq. ft	Yes

## 1 Floor 1 - Bedroom



Dimensions: 16'11" x 14'5"  
Area: 244 sq. ft  
Counted as living area: Yes

Heated: Yes  
Finished: Yes  
Enclosed: Yes  
Contiguous: Yes  
Permitted: Yes  
Wet space: No  
Addition: No  
Conversion: No

## 2 Floor 1 - Bath



Dimensions: 7'7" x 10'4"  
Area: 79 sq. ft  
Counted as living area: Yes

Heated: Yes  
Finished: Yes  
Enclosed: Yes  
Contiguous: Yes  
Permitted: Yes  
Wet space: Yes  
Addition: No  
Conversion: No

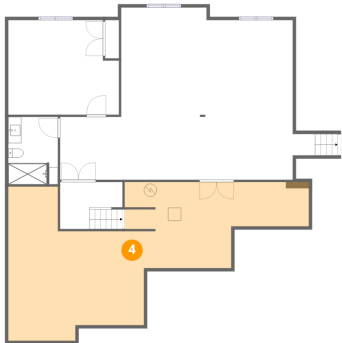
### 3 Floor 1 - Hall



Dimensions: 9'7" x 7'2"  
Area: 68 sq. ft  
Counted as living area: Yes

Heated: Yes  
Finished: Yes  
Enclosed: Yes  
Contiguous: Yes  
Permitted: Yes  
Wet space: No  
Addition: No  
Conversion: No

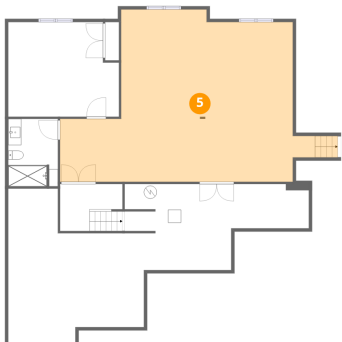
### 4 Floor 1 - Utility



Dimensions: 46'1" x 23'7"  
Area: 1088 sq. ft  
Counted as living area: No

Heated: Yes  
Finished: No  
Enclosed: Yes  
Contiguous: Yes  
Permitted: Yes  
Wet space: No  
Addition: No  
Conversion: No

### 5 Floor 1 - Recreation Room



Dimensions: 35'8" x 26'4"  
Area: 939 sq. ft  
Counted as living area: Yes

Heated: Yes  
Finished: Yes  
Enclosed: Yes  
Contiguous: Yes  
Permitted: Yes  
Wet space: No  
Addition: No  
Conversion: No

## 6 Floor 2 - Laundry



Dimensions: 6'0" x 7'8"  
Area: 46 sq. ft  
Counted as living area: Yes

Heated: Yes  
Finished: Yes  
Enclosed: Yes  
Contiguous: Yes  
Permitted: Yes  
Wet space: No  
Addition: No  
Conversion: No

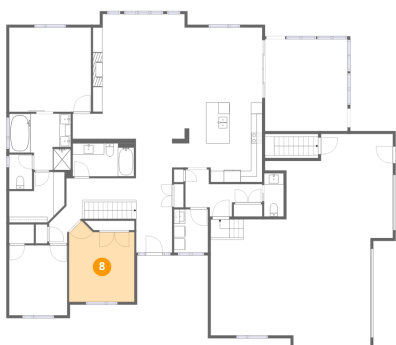
## 7 Floor 2 - Bath



Dimensions: 3'6" x 7'8"  
Area: 27 sq. ft  
Counted as living area: Yes

Heated: Yes  
Finished: Yes  
Enclosed: Yes  
Contiguous: Yes  
Permitted: Yes  
Wet space: Yes  
Addition: No  
Conversion: No

## 8 Floor 2 - Bedroom



Dimensions: 11'7" x 14'4"  
Area: 167 sq. ft  
Counted as living area: Yes

Heated: Yes  
Finished: Yes  
Enclosed: Yes  
Contiguous: Yes  
Permitted: Yes  
Wet space: No  
Addition: No  
Conversion: No

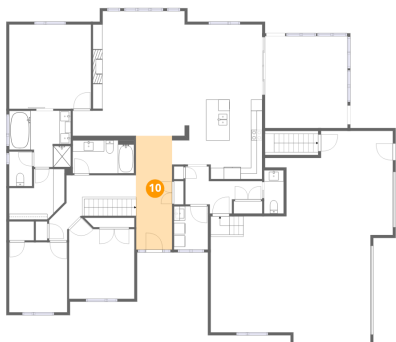
### 9 Floor 2 - Primary Bath



Dimensions: 10'11" x 10'0"  
Area: 109 sq. ft  
Counted as living area: Yes

Heated: Yes  
Finished: Yes  
Enclosed: Yes  
Contiguous: Yes  
Permitted: Yes  
Wet space: Yes  
Addition: No  
Conversion: No

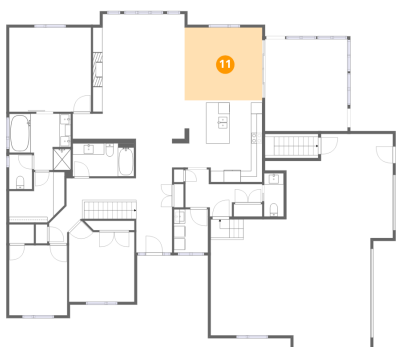
### 10 Floor 2 - Foyer



Dimensions: 6'5" x 20'2"  
Area: 130 sq. ft  
Counted as living area: Yes

Heated: Yes  
Finished: Yes  
Enclosed: Yes  
Contiguous: Yes  
Permitted: Yes  
Wet space: No  
Addition: No  
Conversion: No

### 11 Floor 2 - Dining Area



Dimensions: 13'9" x 12'11"  
Area: 178 sq. ft  
Counted as living area: Yes

Heated: Yes  
Finished: Yes  
Enclosed: Yes  
Contiguous: Yes  
Permitted: Yes  
Wet space: No  
Addition: No  
Conversion: No

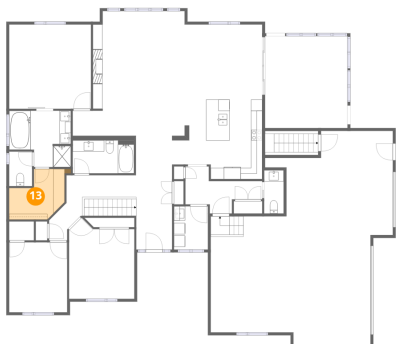
## 12 Floor 2 - Hall



Dimensions: 13'8" x 6'9"  
Area: 92 sq. ft  
Counted as living area: Yes

Heated: Yes  
Finished: Yes  
Enclosed: Yes  
Contiguous: Yes  
Permitted: Yes  
Wet space: No  
Addition: No  
Conversion: No

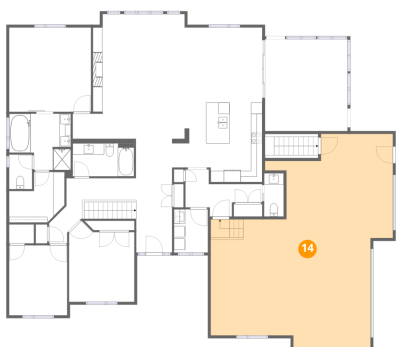
## 13 Floor 2 - W.I.C.



Dimensions: 9'10" x 8'11"  
Area: 88 sq. ft  
Counted as living area: Yes

Heated: Yes  
Finished: Yes  
Enclosed: Yes  
Contiguous: Yes  
Permitted: Yes  
Wet space: No  
Addition: No  
Conversion: No

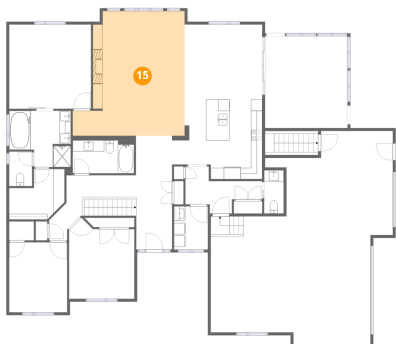
## 14 Floor 2 - Garage



Dimensions: 32'4" x 38'0"  
Area: 1229 sq. ft  
Counted as living area: No

Heated: No  
Finished: No  
Enclosed: Yes  
Contiguous: Yes  
Permitted: Yes  
Wet space: No  
Addition: No  
Conversion: No

**15** Floor 2 - Living Room



Dimensions: 19'10" x 22'2"  
Area: 440 sq. ft  
Counted as living area: Yes

Heated: Yes  
Finished: Yes  
Enclosed: Yes  
Contiguous: Yes  
Permitted: Yes  
Wet space: No  
Addition: No  
Conversion: No

**16** Floor 2 - Kitchen



Dimensions: 16'0" x 14'6"  
Area: 232 sq. ft  
Counted as living area: Yes

Heated: Yes  
Finished: Yes  
Enclosed: Yes  
Contiguous: Yes  
Permitted: Yes  
Wet space: No  
Addition: No  
Conversion: No

**17** Floor 2 - Bath



Dimensions: 4'1" x 6'1"  
Area: 25 sq. ft  
Counted as living area: Yes

Heated: Yes  
Finished: Yes  
Enclosed: Yes  
Contiguous: Yes  
Permitted: Yes  
Wet space: Yes  
Addition: No  
Conversion: No

### 18 Floor 2 - Screened Porch



Dimensions: 14'8" x 16'3"  
Area: 238 sq. ft  
Counted as living area: No

Heated: No  
Finished: No  
Enclosed: No  
Contiguous: Yes  
Permitted: Yes  
Wet space: No  
Addition: No  
Conversion: No

### 19 Floor 2 - Primary Bedroom



Dimensions: 14'6" x 14'11"  
Area: 217 sq. ft  
Counted as living area: Yes

Heated: Yes  
Finished: Yes  
Enclosed: Yes  
Contiguous: Yes  
Permitted: Yes  
Wet space: No  
Addition: No  
Conversion: No

### 20 Floor 2 - Hall



Dimensions: 12'4" x 9'7"  
Area: 118 sq. ft  
Counted as living area: Yes

Heated: Yes  
Finished: Yes  
Enclosed: Yes  
Contiguous: Yes  
Permitted: Yes  
Wet space: No  
Addition: No  
Conversion: No

**21** Floor 2 - Bath

---



Dimensions: 10'11" x 5'10"  
Area: 64 sq. ft  
Counted as living area: Yes

Heated: Yes  
Finished: Yes  
Enclosed: Yes  
Contiguous: Yes  
Permitted: Yes  
Wet space: Yes  
Addition: No  
Conversion: No

**22** Floor 2 - Bedroom

---



Dimensions: 10'4" x 12'5"  
Area: 128 sq. ft  
Counted as living area: Yes

Heated: Yes  
Finished: Yes  
Enclosed: Yes  
Contiguous: Yes  
Permitted: Yes  
Wet space: No  
Addition: No  
Conversion: No