

## Home data report

**103 April Lane, Vinton, Bedford County, Virginia, United States, 24179**



**Total Area: 1810 sq. ft**

Basement: 0 sq. ft, 1st Floor: 1810 sq. ft

Excluded: Basement 1750 sq. ft, Porch 217 sq. ft, Deck 165 sq. ft, Garage 536 sq. ft,

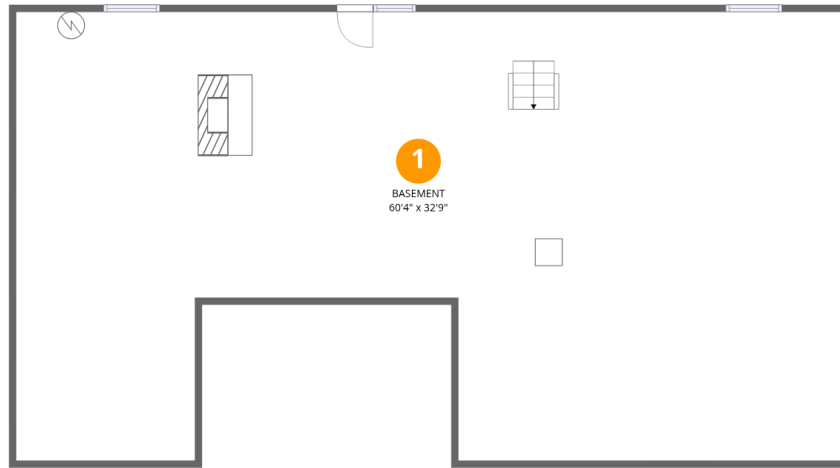
Walls: 258 sq. ft

## Property summary



Home data report

103 April Lane, Vinton, Bedford County, Virginia, United States,  
24179



## Room dimensions

Floor 1 Below grade

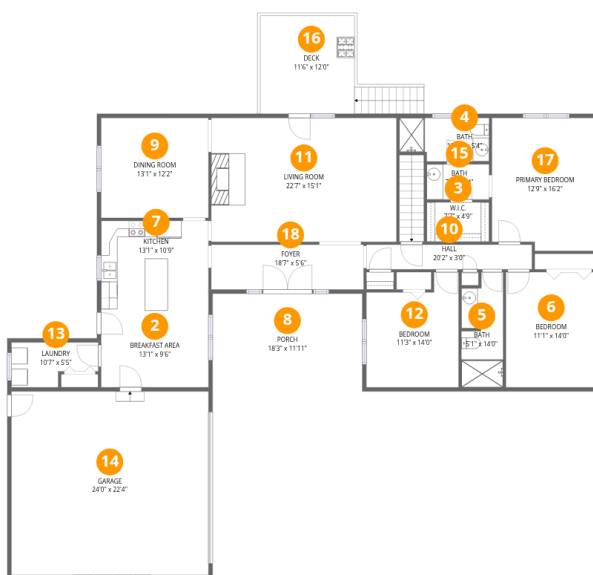
Total:0sqft

Excluded: 1750sqft

#		Dimensions	sqft	Counted as living area
1	Basement	60'4" x 32'9"	1979 sq. ft	No

Home data report

103 April Lane, Vinton, Bedford County, Virginia, United States, 24179



## Room dimensions

Floor 2

Total:1810sqft Excluded: 918sqft

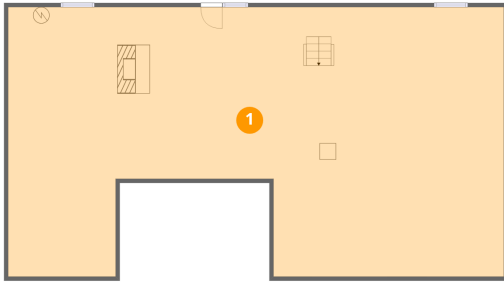
#		Dimensions	sqft	Counted as living area
2	Breakfast Area	13'1" x 9'6"	125 sq. ft	Yes
3	W.I.C.	7'7" x 4'9"	36 sq. ft	Yes
4	Bath	10'11" x 5'4"	58 sq. ft	Yes
5	Bath	5'1" x 14'0"	71 sq. ft	Yes
6	Bedroom	11'1" x 14'0"	155 sq. ft	Yes
7	Kitchen	13'1" x 10'9"	141 sq. ft	Yes
8	Porch	18'3" x 11'11"	217 sq. ft	No
9	Dining Room	13'1" x 12'2"	159 sq. ft	Yes
10	Hall	20'2" x 3'0"	60 sq. ft	Yes
11	Living Room	22'7" x 15'1"	340 sq. ft	Yes
12	Bedroom	11'3" x 14'0"	158 sq. ft	Yes

Home data report

**103 April Lane, Vinton, Bedford County, Virginia, United States,  
24179**

#		Dimensions	sqft	Counted as living area
13	Laundry	10'7" x 5'5"	58 sq. ft	Yes
14	Garage	24'0" x 22'4"	536 sq. ft	No
15	Bath	7'7" x 4'4"	33 sq. ft	Yes
16	Deck	11'6" x 12'0"	138 sq. ft	No
17	Primary Bedroom	12'9" x 16'2"	206 sq. ft	Yes
18	Foyer	18'7" x 5'6"	102 sq. ft	Yes

## 1 Floor 1 - Basement



Dimensions: 60'4" x 32'9"  
Area: 1979 sq. ft  
Counted as living area: No

Heated: Yes  
Finished: No  
Enclosed: Yes  
Contiguous: Yes  
Permitted: Yes  
Wet space: No  
Addition: No  
Conversion: No

## 2 Floor 2 - Breakfast Area



Dimensions: 13'1" x 9'6"  
Area: 125 sq. ft  
Counted as living area: Yes

Heated: Yes  
Finished: Yes  
Enclosed: Yes  
Contiguous: Yes  
Permitted: Yes  
Wet space: No  
Addition: No  
Conversion: No

**3 Floor 2 - W.I.C.**



Dimensions: 7'7" x 4'9"  
Area: 36 sq. ft  
Counted as living area: Yes

Heated: Yes  
Finished: Yes  
Enclosed: Yes  
Contiguous: Yes  
Permitted: Yes  
Wet space: No  
Addition: No  
Conversion: No

**4 Floor 2 - Bath**



Dimensions: 10'11" x 5'4"  
Area: 58 sq. ft  
Counted as living area: Yes

Heated: Yes  
Finished: Yes  
Enclosed: Yes  
Contiguous: Yes  
Permitted: Yes  
Wet space: Yes  
Addition: No  
Conversion: No

**5 Floor 2 - Bath**



Dimensions: 5'1" x 14'0"  
Area: 71 sq. ft  
Counted as living area: Yes

Heated: Yes  
Finished: Yes  
Enclosed: Yes  
Contiguous: Yes  
Permitted: Yes  
Wet space: Yes  
Addition: No  
Conversion: No

## 6 Floor 2 - Bedroom



Dimensions: 11'1" x 14'0"  
Area: 155 sq. ft  
Counted as living area: Yes

Heated: Yes  
Finished: Yes  
Enclosed: Yes  
Contiguous: Yes  
Permitted: Yes  
Wet space: No  
Addition: No  
Conversion: No

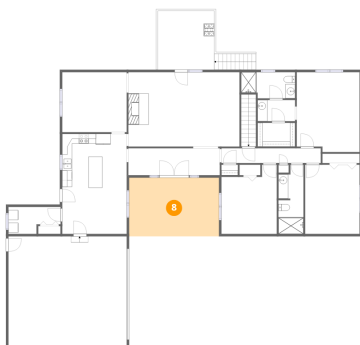
## 7 Floor 2 - Kitchen



Dimensions: 13'1" x 10'9"  
Area: 141 sq. ft  
Counted as living area: Yes

Heated: Yes  
Finished: Yes  
Enclosed: Yes  
Contiguous: Yes  
Permitted: Yes  
Wet space: No  
Addition: No  
Conversion: No

## 8 Floor 2 - Porch



Dimensions: 18'3" x 11'11"  
Area: 217 sq. ft  
Counted as living area: No

Heated: No  
Finished: No  
Enclosed: No  
Contiguous: Yes  
Permitted: Yes  
Wet space: No  
Addition: No  
Conversion: No

## 9 Floor 2 - Dining Room



Dimensions: 13'1" x 12'2"  
Area: 159 sq. ft  
Counted as living area: Yes

Heated: Yes  
Finished: Yes  
Enclosed: Yes  
Contiguous: Yes  
Permitted: Yes  
Wet space: No  
Addition: No  
Conversion: No

## 10 Floor 2 - Hall



Dimensions: 20'2" x 3'0"  
Area: 60 sq. ft  
Counted as living area: Yes

Heated: Yes  
Finished: Yes  
Enclosed: Yes  
Contiguous: Yes  
Permitted: Yes  
Wet space: No  
Addition: No  
Conversion: No

## 11 Floor 2 - Living Room



Dimensions: 22'7" x 15'1"  
Area: 340 sq. ft  
Counted as living area: Yes

Heated: Yes  
Finished: Yes  
Enclosed: Yes  
Contiguous: Yes  
Permitted: Yes  
Wet space: No  
Addition: No  
Conversion: No

## 12 Floor 2 - Bedroom



Dimensions: 11'3" x 14'0"  
Area: 158 sq. ft  
Counted as living area: Yes

Heated: Yes  
Finished: Yes  
Enclosed: Yes  
Contiguous: Yes  
Permitted: Yes  
Wet space: No  
Addition: No  
Conversion: No

## 13 Floor 2 - Laundry



Dimensions: 10'7" x 5'5"  
Area: 58 sq. ft  
Counted as living area: Yes

Heated: Yes  
Finished: Yes  
Enclosed: Yes  
Contiguous: Yes  
Permitted: Yes  
Wet space: No  
Addition: No  
Conversion: No

## 14 Floor 2 - Garage



Dimensions: 24'0" x 22'4"  
Area: 536 sq. ft  
Counted as living area: No

Heated: No  
Finished: No  
Enclosed: Yes  
Contiguous: Yes  
Permitted: Yes  
Wet space: No  
Addition: No  
Conversion: No

### 15 Floor 2 - Bath



Dimensions: 7'7" x 4'4"  
Area: 33 sq. ft  
Counted as living area: Yes

Heated: Yes  
Finished: Yes  
Enclosed: Yes  
Contiguous: Yes  
Permitted: Yes  
Wet space: Yes  
Addition: No  
Conversion: No

### 16 Floor 2 - Deck



Dimensions: 11'6" x 12'0"  
Area: 138 sq. ft  
Counted as living area: No

Heated: No  
Finished: No  
Enclosed: No  
Contiguous: Yes  
Permitted: Yes  
Wet space: No  
Addition: No  
Conversion: No

### 17 Floor 2 - Primary Bedroom



Dimensions: 12'9" x 16'2"  
Area: 206 sq. ft  
Counted as living area: Yes

Heated: Yes  
Finished: Yes  
Enclosed: Yes  
Contiguous: Yes  
Permitted: Yes  
Wet space: No  
Addition: No  
Conversion: No

Home data report

103 April Lane, Vinton, Bedford County, Virginia, United States,  
24179

**18** Floor 2 - Foyer

---



Dimensions: 18'7" x 5'6"  
Area: 102 sq. ft  
Counted as living area: Yes

Heated: Yes  
Finished: Yes  
Enclosed: Yes  
Contiguous: Yes  
Permitted: Yes  
Wet space: No  
Addition: No  
Conversion: No