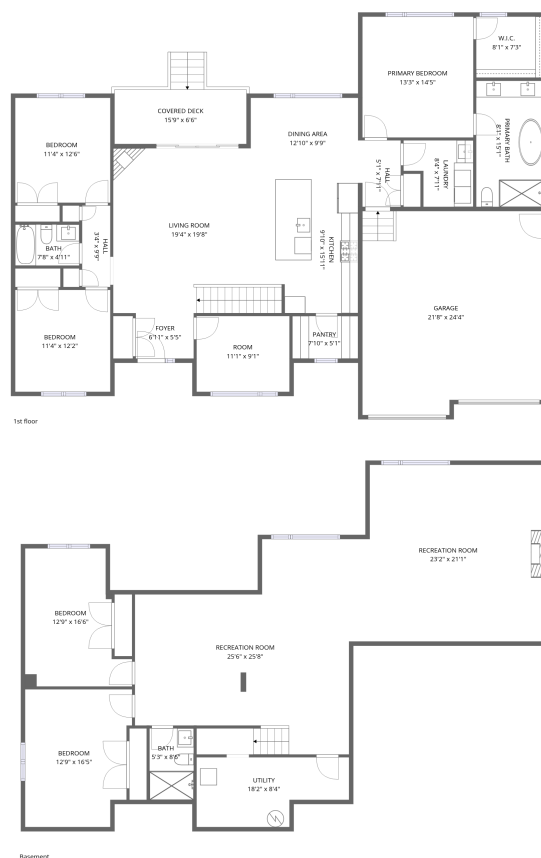


## Home data report

# 1160 Slater Road, Kemptville, United Counties of Leeds and Grenville, Ontario, Canada, K0G 1J0



**Total Area: 3233 sq. ft**

Basement: 1476 sq. ft, 1st Floor: 1757 sq. ft

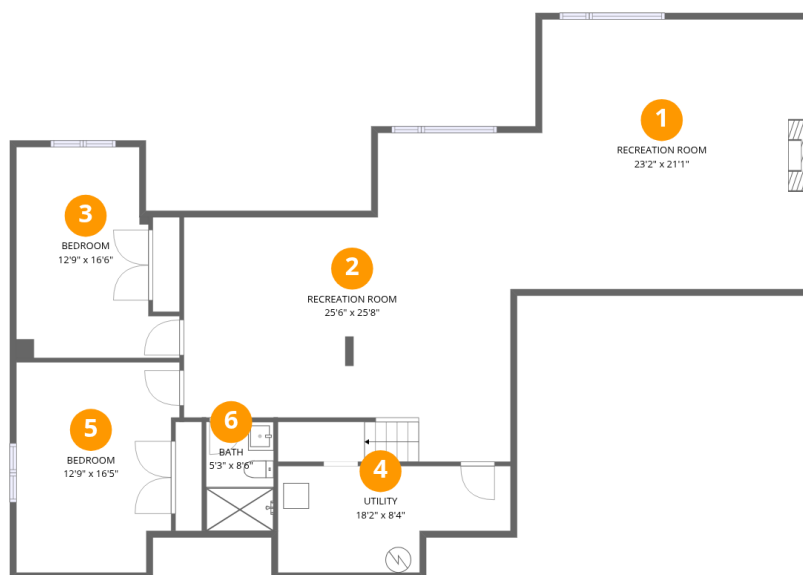
Excluded: Utility 128 sq. ft, Covered deck 120 sq. ft, Garage 506 sq. ft, Walls: 260 sq. ft

## Property summary



## Home data report

1160 Slater Road, Kemptville, United Counties of Leeds and Grenville, Ontario, Canada, K0G 1J0



## Room dimensions

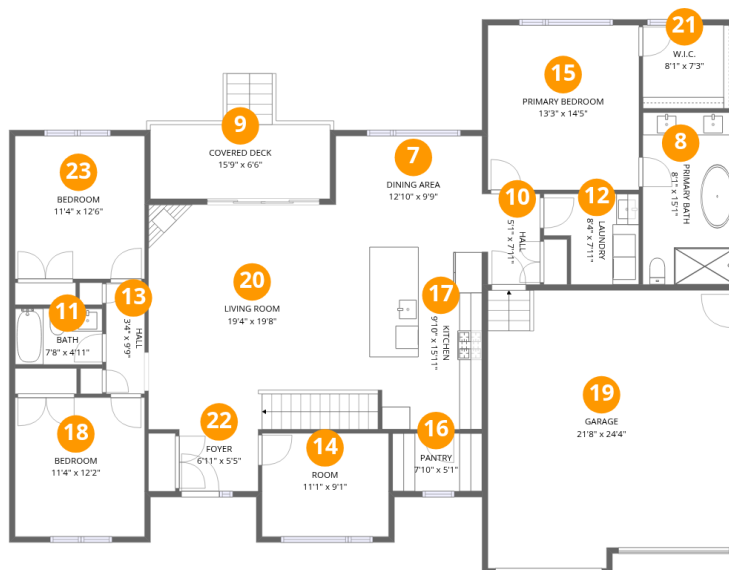
Floor 1 Below grade

Total:1476sqft

Excluded: 128sqft

#		Dimensions	sqft	Counted as living area
1	Recreation Room	23'2" x 21'1"	488 sq. ft	Yes
2	Recreation Room	25'6" x 25'8"	653 sq. ft	Yes
3	Bedroom	12'9" x 16'6"	210 sq. ft	Yes
4	Utility	18'2" x 8'4"	151 sq. ft	No
5	Bedroom	12'9" x 16'5"	209 sq. ft	Yes
6	Bath	5'3" x 8'6"	45 sq. ft	Yes

# 1160 Slater Road, Kemptville, United Counties of Leeds and Grenville, Ontario, Canada, K0G 1J0



## Room dimensions

Floor 2

Total:1757sqft Excluded: 626sqft

#		Dimensions	sqft	Counted as living area
7	Dining Area	12'10" x 9'9"	125 sq. ft	Yes
8	Primary Bath	8'1" x 15'1"	121 sq. ft	Yes
9	Covered Deck	15'9" x 6'6"	102 sq. ft	No
10	Hall	5'1" x 7'11"	40 sq. ft	Yes
11	Bath	7'8" x 4'11"	37 sq. ft	Yes
12	Laundry	8'4" x 7'11"	66 sq. ft	Yes
13	Hall	3'4" x 9'9"	33 sq. ft	Yes
14	Room	11'1" x 9'1"	100 sq. ft	Yes
15	Primary Bedroom	13'3" x 14'5"	191 sq. ft	Yes
16	Pantry	7'10" x 5'1"	40 sq. ft	Yes
17	Kitchen	9'10" x 15'11"	157 sq. ft	Yes

Home data report

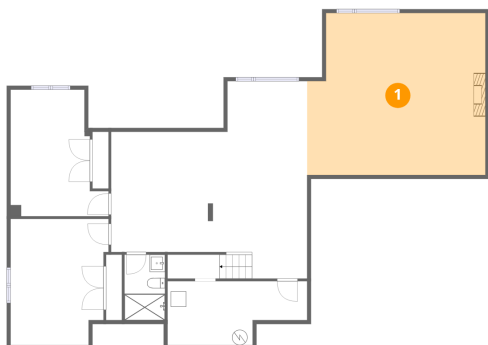
**1160 Slater Road, Kemptville, United Counties of Leeds and  
Grenville, Ontario, Canada, K0G 1J0**

#		Dimensions	sqft	Counted as living area
18	Bedroom	11'4" x 12'2"	138 sq. ft	Yes
19	Garage	21'8" x 24'4"	526 sq. ft	No
20	Living Room	19'4" x 19'8"	380 sq. ft	Yes
21	W.I.C.	8'1" x 7'3"	59 sq. ft	Yes
22	Foyer	6'11" x 5'5"	37 sq. ft	Yes
23	Bedroom	11'4" x 12'6"	142 sq. ft	Yes

# 1160 Slater Road, Kemptville, United Counties of Leeds and Grenville, Ontario, Canada, K0G 1J0

## 1 Floor 1 - Recreation Room

---

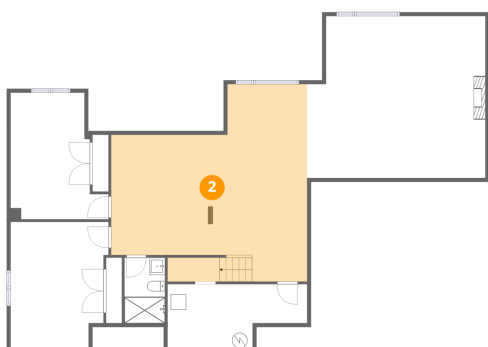


Dimensions: 23'2" x 21'1"  
Area: 488 sq. ft  
Counted as living area: Yes

Heated: Yes  
Finished: Yes  
Enclosed: Yes  
Contiguous: Yes  
Permitted: Yes  
Wet space: No  
Addition: No  
Conversion: No

## 2 Floor 1 - Recreation Room

---

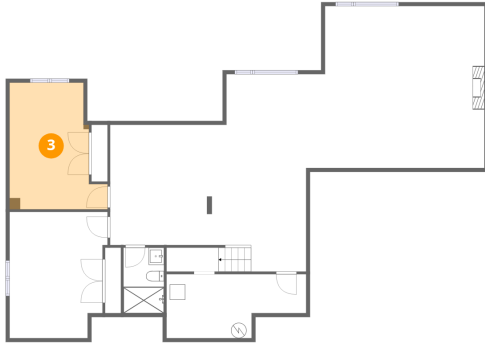


Dimensions: 25'6" x 25'8"  
Area: 653 sq. ft  
Counted as living area: Yes

Heated: Yes  
Finished: Yes  
Enclosed: Yes  
Contiguous: Yes  
Permitted: Yes  
Wet space: No  
Addition: No  
Conversion: No

1160 Slater Road, Kemptville, United Counties of Leeds and Grenville, Ontario, Canada, K0G 1J0

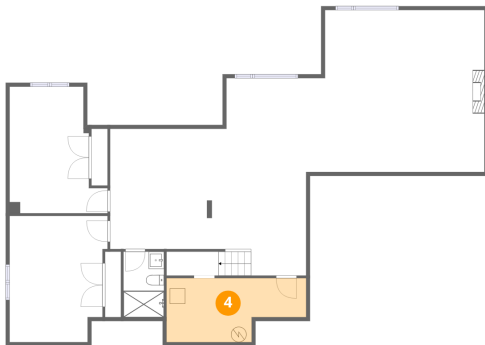
**3** Floor 1 - Bedroom



Dimensions: 12'9" x 16'6"  
Area: 210 sq. ft  
Counted as living area: Yes

Heated: Yes  
Finished: Yes  
Enclosed: Yes  
Contiguous: Yes  
Permitted: Yes  
Wet space: No  
Addition: No  
Conversion: No

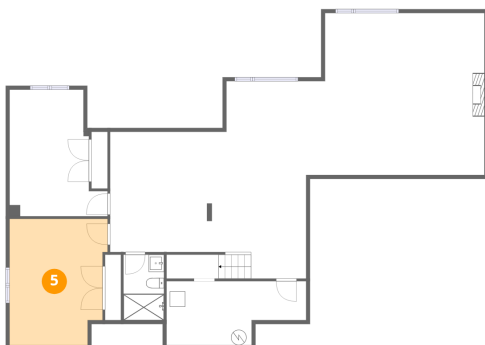
**4** Floor 1 - Utility



Dimensions: 18'2" x 8'4"  
Area: 151 sq. ft  
Counted as living area: No

Heated: Yes  
Finished: No  
Enclosed: Yes  
Contiguous: Yes  
Permitted: Yes  
Wet space: No  
Addition: No  
Conversion: No

**5** Floor 1 - Bedroom

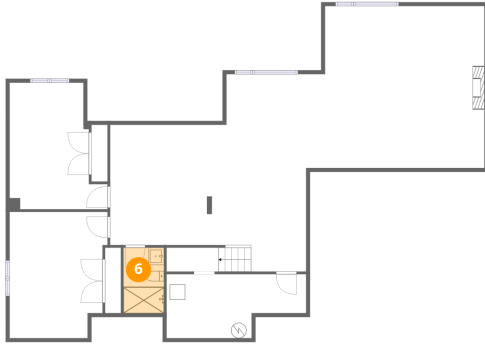


Dimensions: 12'9" x 16'5"  
Area: 209 sq. ft  
Counted as living area: Yes

Heated: Yes  
Finished: Yes  
Enclosed: Yes  
Contiguous: Yes  
Permitted: Yes  
Wet space: No  
Addition: No  
Conversion: No

1160 Slater Road, Kemptville, United Counties of Leeds and Grenville, Ontario, Canada, K0G 1J0

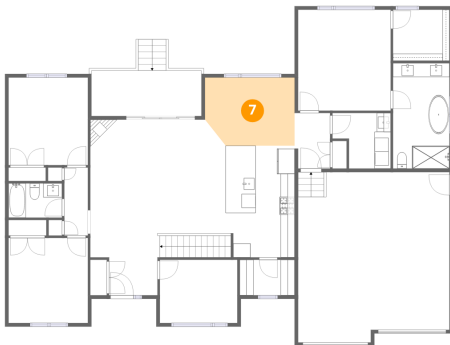
**6** Floor 1 - Bath



Dimensions: 5'3" x 8'6"  
Area: 45 sq. ft  
Counted as living area: Yes

Heated: Yes  
Finished: Yes  
Enclosed: Yes  
Contiguous: Yes  
Permitted: Yes  
Wet space: Yes  
Addition: No  
Conversion: No

**7** Floor 2 - Dining Area



Dimensions: 12'10" x 9'9"  
Area: 125 sq. ft  
Counted as living area: Yes

Heated: Yes  
Finished: Yes  
Enclosed: Yes  
Contiguous: Yes  
Permitted: Yes  
Wet space: No  
Addition: No  
Conversion: No

**8** Floor 2 - Primary Bath

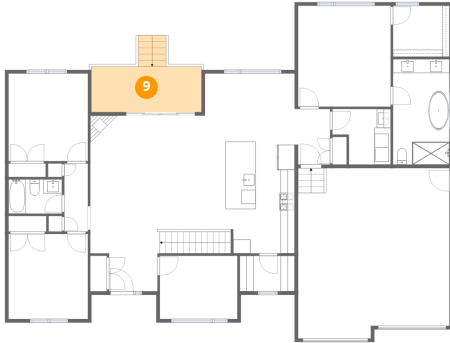


Dimensions: 8'1" x 15'1"  
Area: 121 sq. ft  
Counted as living area: Yes

Heated: Yes  
Finished: Yes  
Enclosed: Yes  
Contiguous: Yes  
Permitted: Yes  
Wet space: Yes  
Addition: No  
Conversion: No

1160 Slater Road, Kemptville, United Counties of Leeds and Grenville, Ontario, Canada, K0G 1J0

9 Floor 2 - Covered Deck



Dimensions: 15'9" x 6'6"  
Area: 102 sq. ft  
Counted as living area: No

Heated: No  
Finished: No  
Enclosed: No  
Contiguous: Yes  
Permitted: Yes  
Wet space: No  
Addition: No  
Conversion: No

10 Floor 2 - Hall



Dimensions: 5'1" x 7'11"  
Area: 40 sq. ft  
Counted as living area: Yes

Heated: Yes  
Finished: Yes  
Enclosed: Yes  
Contiguous: Yes  
Permitted: Yes  
Wet space: No  
Addition: No  
Conversion: No

11 Floor 2 - Bath

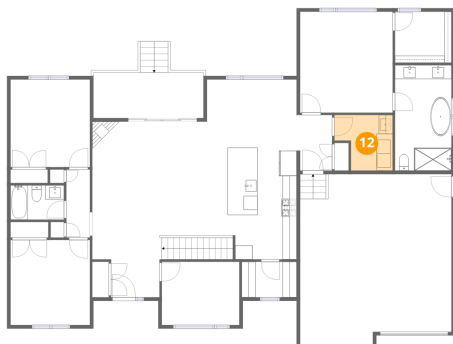


Dimensions: 7'8" x 4'11"  
Area: 37 sq. ft  
Counted as living area: Yes

Heated: Yes  
Finished: Yes  
Enclosed: Yes  
Contiguous: Yes  
Permitted: Yes  
Wet space: Yes  
Addition: No  
Conversion: No

# 1160 Slater Road, Kemptville, United Counties of Leeds and Grenville, Ontario, Canada, K0G 1J0

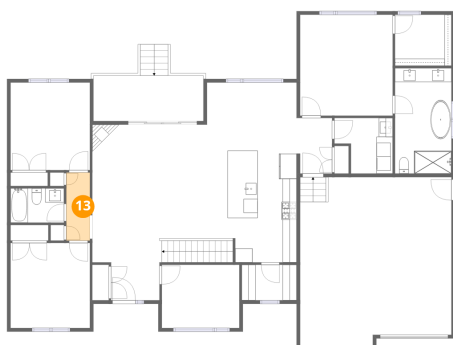
## 12 Floor 2 - Laundry



Dimensions: 8'4" x 7'11"  
Area: 66 sq. ft  
Counted as living area: Yes

Heated: Yes  
Finished: Yes  
Enclosed: Yes  
Contiguous: Yes  
Permitted: Yes  
Wet space: No  
Addition: No  
Conversion: No

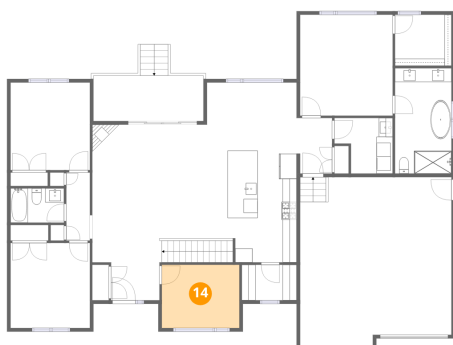
## 13 Floor 2 - Hall



Dimensions: 3'4" x 9'9"  
Area: 33 sq. ft  
Counted as living area: Yes

Heated: Yes  
Finished: Yes  
Enclosed: Yes  
Contiguous: Yes  
Permitted: Yes  
Wet space: No  
Addition: No  
Conversion: No

## 14 Floor 2 - Room

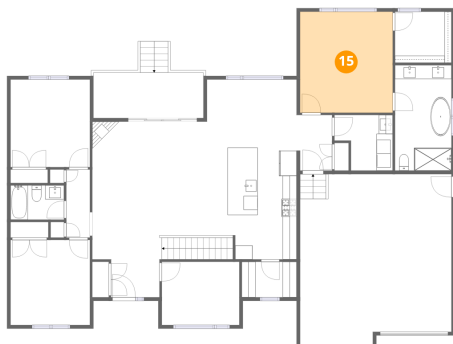


Dimensions: 11'1" x 9'1"  
Area: 100 sq. ft  
Counted as living area: Yes

Heated: Yes  
Finished: Yes  
Enclosed: Yes  
Contiguous: Yes  
Permitted: Yes  
Wet space: No  
Addition: No  
Conversion: No

# 1160 Slater Road, Kemptville, United Counties of Leeds and Grenville, Ontario, Canada, K0G 1J0

## 15 Floor 2 - Primary Bedroom



Dimensions: 13'3" x 14'5"  
Area: 191 sq. ft  
Counted as living area: Yes

Heated: Yes  
Finished: Yes  
Enclosed: Yes  
Contiguous: Yes  
Permitted: Yes  
Wet space: No  
Addition: No  
Conversion: No

## 16 Floor 2 - Pantry



Dimensions: 7'10" x 5'1"  
Area: 40 sq. ft  
Counted as living area: Yes

Heated: Yes  
Finished: Yes  
Enclosed: Yes  
Contiguous: Yes  
Permitted: Yes  
Wet space: No  
Addition: No  
Conversion: No

## 17 Floor 2 - Kitchen



Dimensions: 9'10" x 15'11"  
Area: 157 sq. ft  
Counted as living area: Yes

Heated: Yes  
Finished: Yes  
Enclosed: Yes  
Contiguous: Yes  
Permitted: Yes  
Wet space: No  
Addition: No  
Conversion: No

# 1160 Slater Road, Kemptville, United Counties of Leeds and Grenville, Ontario, Canada, K0G 1J0

## 18 Floor 2 - Bedroom



Dimensions: 11'4" x 12'2"  
Area: 138 sq. ft  
Counted as living area: Yes

Heated: Yes  
Finished: Yes  
Enclosed: Yes  
Contiguous: Yes  
Permitted: Yes  
Wet space: No  
Addition: No  
Conversion: No

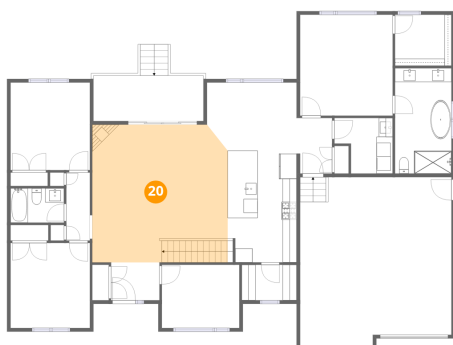
## 19 Floor 2 - Garage



Dimensions: 21'8" x 24'4"  
Area: 526 sq. ft  
Counted as living area: No

Heated: No  
Finished: No  
Enclosed: Yes  
Contiguous: Yes  
Permitted: Yes  
Wet space: No  
Addition: No  
Conversion: No

## 20 Floor 2 - Living Room



Dimensions: 19'4" x 19'8"  
Area: 380 sq. ft  
Counted as living area: Yes

Heated: Yes  
Finished: Yes  
Enclosed: Yes  
Contiguous: Yes  
Permitted: Yes  
Wet space: No  
Addition: No  
Conversion: No

# 1160 Slater Road, Kemptville, United Counties of Leeds and Grenville, Ontario, Canada, K0G 1J0

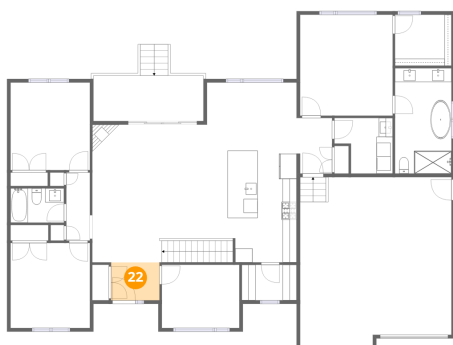
## 21 Floor 2 - W.I.C.



Dimensions: 8'1" x 7'3"  
Area: 59 sq. ft  
Counted as living area: Yes

Heated: Yes  
Finished: Yes  
Enclosed: Yes  
Contiguous: Yes  
Permitted: Yes  
Wet space: No  
Addition: No  
Conversion: No

## 22 Floor 2 - Foyer



Dimensions: 6'11" x 5'5"  
Area: 37 sq. ft  
Counted as living area: Yes

Heated: Yes  
Finished: Yes  
Enclosed: Yes  
Contiguous: Yes  
Permitted: Yes  
Wet space: No  
Addition: No  
Conversion: No

## 23 Floor 2 - Bedroom



Dimensions: 11'4" x 12'6"  
Area: 142 sq. ft  
Counted as living area: Yes

Heated: Yes  
Finished: Yes  
Enclosed: Yes  
Contiguous: Yes  
Permitted: Yes  
Wet space: No  
Addition: No  
Conversion: No