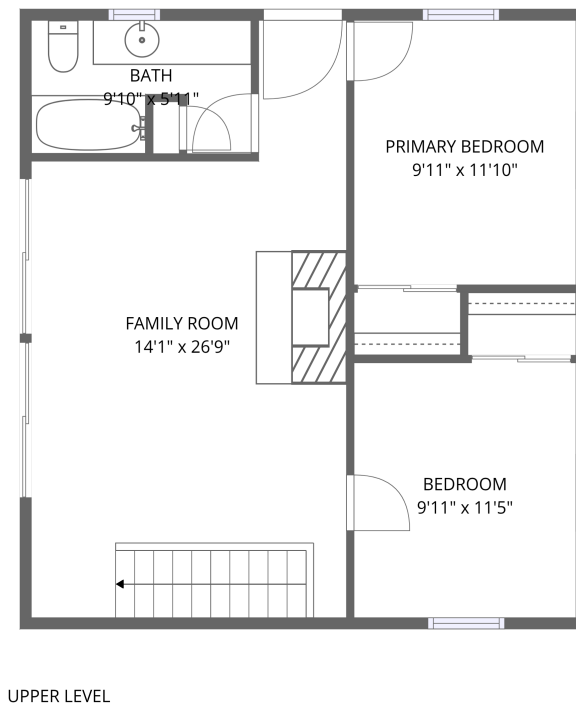
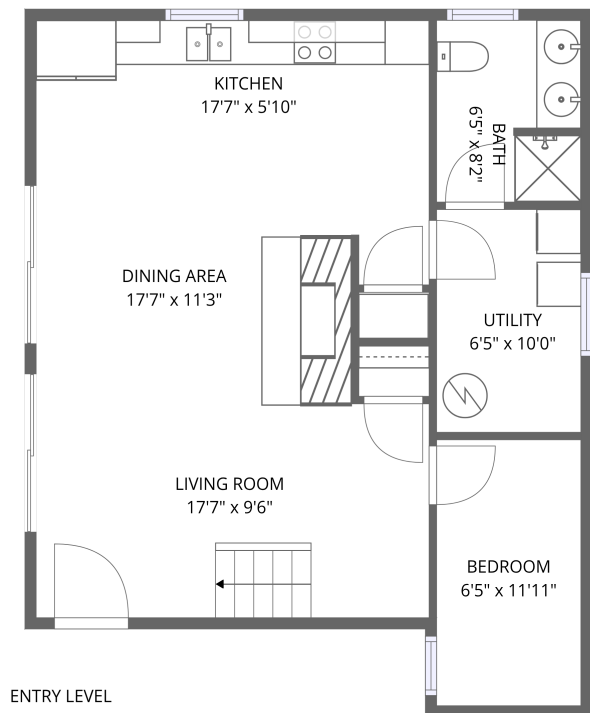


Home data report

1351 Ellis Road, Hardy, Franklin County, Virginia, United States, 24101



Total Area: 1263 sq. ft

1st Floor: 612 sq. ft, 2nd Floor: 651 sq. ft

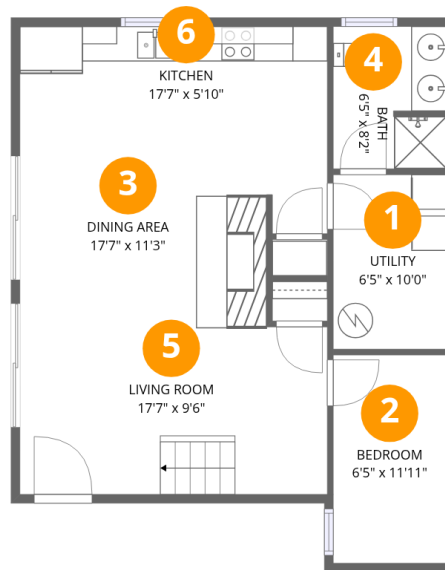
Excluded: Utility 64 sq. ft, Walls: 108 sq. ft

Property summary



Home data report

1351 Ellis Road, Hardy, Franklin County, Virginia, United States, 24101



Room dimensions

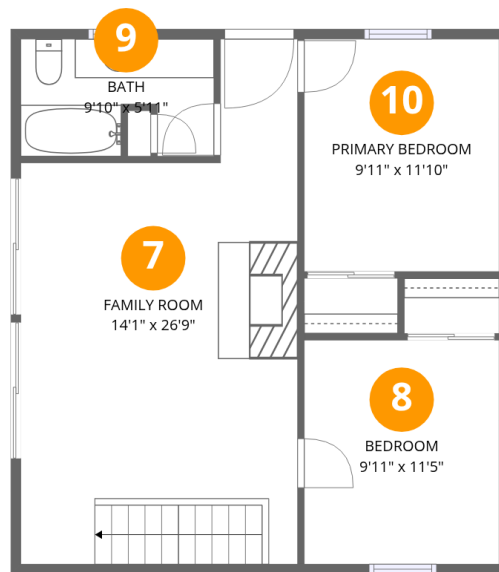
Floor 1

Total:612sqft Excluded: 64sqft

#		Dimensions	sqft	Counted as living area
1	Utility	6'5" x 10'0"	64 sq. ft	No
2	Bedroom	6'5" x 11'11"	77 sq. ft	Yes
3	Dining Area	17'7" x 11'3"	198 sq. ft	Yes
4	Bath	6'5" x 8'2"	52 sq. ft	Yes
5	Living Room	17'7" x 9'6"	168 sq. ft	Yes
6	Kitchen	17'7" x 5'10"	103 sq. ft	Yes

Home data report

1351 Ellis Road, Hardy, Franklin County, Virginia, United States, 24101



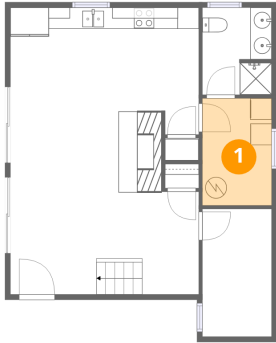
Room dimensions

Floor 2

Total:651sqft Excluded: 0sqft

#		Dimensions	sqft	Counted as living area
7	Family Room	14'1" x 26'9"	377 sq. ft	Yes
8	Bedroom	9'11" x 11'5"	113 sq. ft	Yes
9	Bath	9'10" x 5'11"	58 sq. ft	Yes
10	Primary Bedroom	9'11" x 11'10"	118 sq. ft	Yes

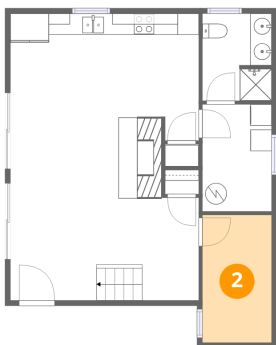
1 Floor 1 - Utility



Dimensions: 6'5" x 10'0"
Area: 64 sq. ft
Counted as living area: No

Heated: Yes
Finished: No
Enclosed: Yes
Contiguous: Yes
Permitted: Yes
Wet space: No
Addition: No
Conversion: No

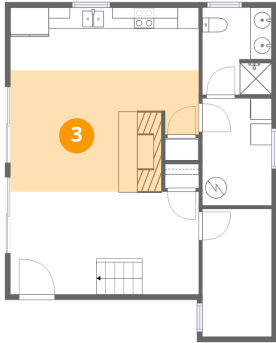
2 Floor 1 - Bedroom



Dimensions: 6'5" x 11'11"
Area: 77 sq. ft
Counted as living area: Yes

Heated: Yes
Finished: Yes
Enclosed: Yes
Contiguous: Yes
Permitted: Yes
Wet space: No
Addition: No
Conversion: No

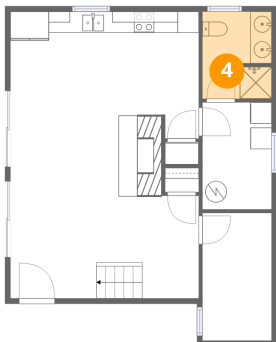
3 Floor 1 - Dining Area



Dimensions: 17'7" x 11'3"
Area: 198 sq. ft
Counted as living area: Yes

Heated: Yes
Finished: Yes
Enclosed: Yes
Contiguous: Yes
Permitted: Yes
Wet space: No
Addition: No
Conversion: No

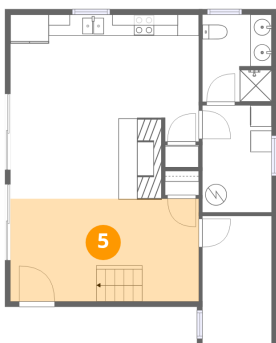
4 Floor 1 - Bath



Dimensions: 6'5" x 8'2"
Area: 52 sq. ft
Counted as living area: No

Heated: Yes
Finished: Yes
Enclosed: Yes
Contiguous: No
Permitted: Yes
Wet space: Yes
Addition: No
Conversion: No

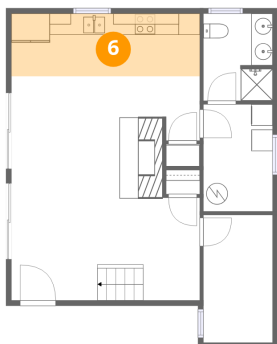
5 Floor 1 - Living Room



Dimensions: 17'7" x 9'6"
Area: 168 sq. ft
Counted as living area: Yes

Heated: Yes
Finished: Yes
Enclosed: Yes
Contiguous: Yes
Permitted: Yes
Wet space: No
Addition: No
Conversion: No

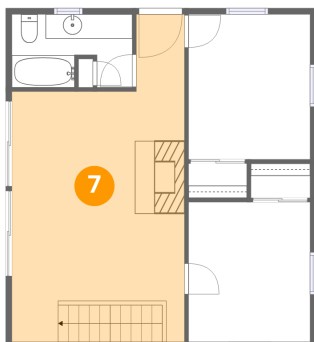
6 Floor 1 - Kitchen



Dimensions: 17'7" x 5'10"
Area: 103 sq. ft
Counted as living area: Yes

Heated: Yes
Finished: Yes
Enclosed: Yes
Contiguous: Yes
Permitted: Yes
Wet space: No
Addition: No
Conversion: No

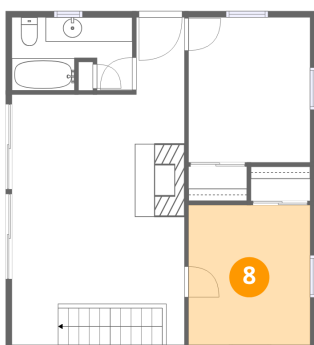
7 Floor 2 - Family Room



Dimensions: 14'1" x 26'9"
Area: 377 sq. ft
Counted as living area: Yes

Heated: Yes
Finished: Yes
Enclosed: Yes
Contiguous: Yes
Permitted: Yes
Wet space: No
Addition: No
Conversion: No

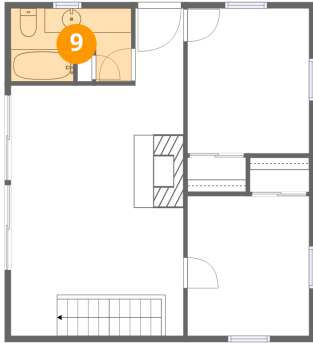
8 Floor 2 - Bedroom



Dimensions: 9'11" x 11'5"
Area: 113 sq. ft
Counted as living area: Yes

Heated: Yes
Finished: Yes
Enclosed: Yes
Contiguous: Yes
Permitted: Yes
Wet space: No
Addition: No
Conversion: No

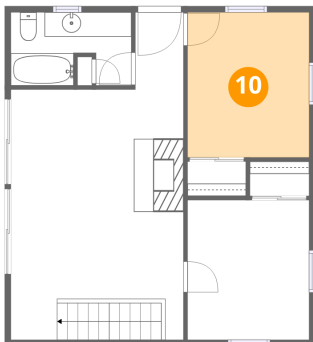
9 Floor 2 - Bath



Dimensions: 9'10" x 5'11"
Area: 58 sq. ft
Counted as living area: Yes

Heated: Yes
Finished: Yes
Enclosed: Yes
Contiguous: Yes
Permitted: Yes
Wet space: Yes
Addition: No
Conversion: No

10 Floor 2 - Primary Bedroom



Dimensions: 9'11" x 11'10"
Area: 118 sq. ft
Counted as living area: Yes

Heated: Yes
Finished: Yes
Enclosed: Yes
Contiguous: Yes
Permitted: Yes
Wet space: No
Addition: No
Conversion: No