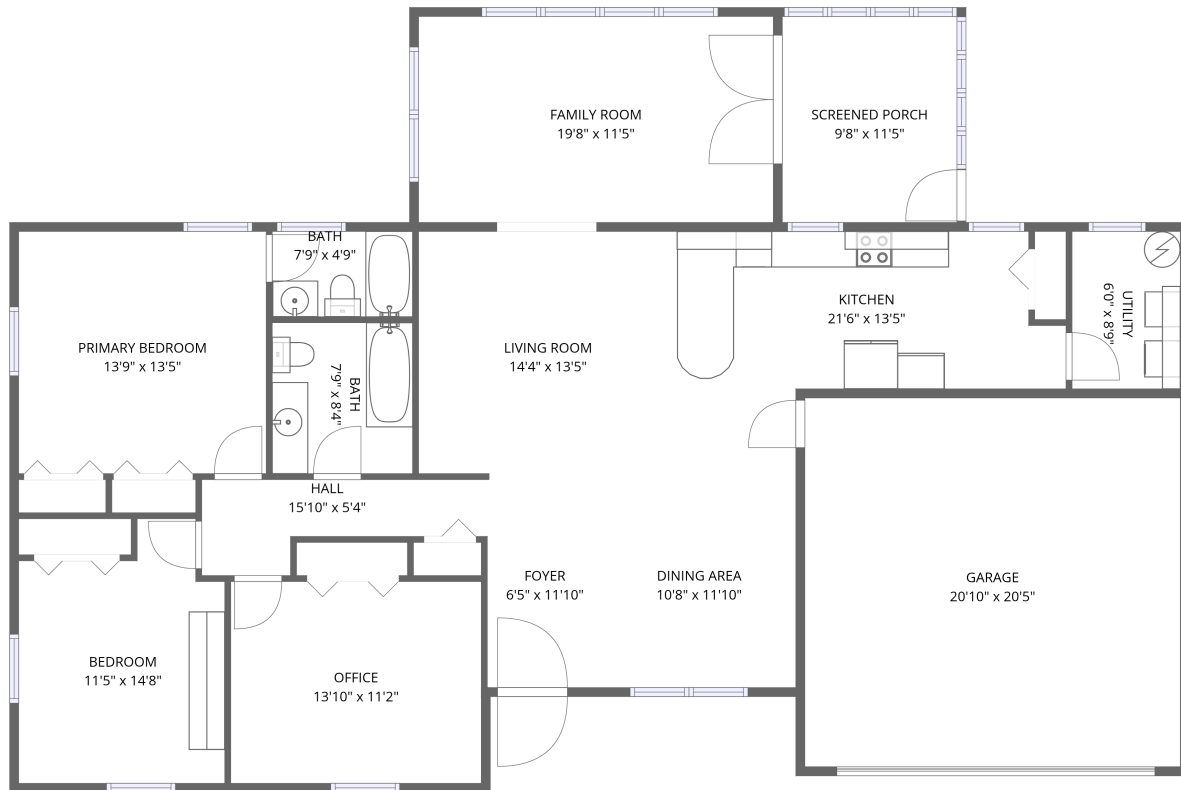


Home data report

853 Walker Springs Rd, Knoxville, TN, US



1st floor

Total Area: 1643 sq. ft

1st Floor: 1643 sq. ft

Excluded: Garage 425 sq. ft, Screened porch 110 sq. ft, Walls: 141 sq. ft

Property summary



1 Floors



2 Bedrooms

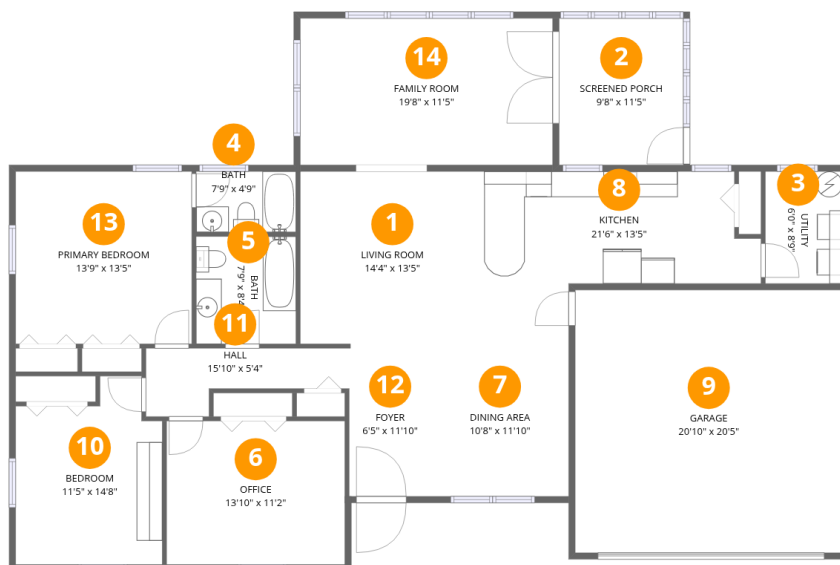


2 Bathrooms



1 Garages

853 Walker Springs Rd, Knoxville, TN, US



Room dimensions

Floor 1

Total: 1643sqft Excluded: 535sqft

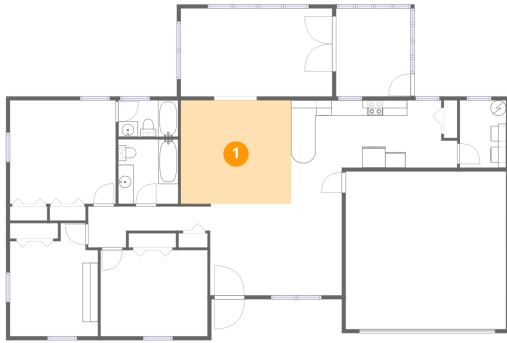
#		Dimensions	sqft	Counted as living area
1	Living Room	14'4" x 13'5"	192 sq. ft	Yes
2	Screened Porch	9'8" x 11'5"	110 sq. ft	No
3	Utility	6'0" x 8'9"	52 sq. ft	Yes
4	Bath	7'9" x 4'9"	37 sq. ft	Yes
5	Bath	7'9" x 8'4"	65 sq. ft	Yes
6	Office	13'10" x 11'2"	155 sq. ft	Yes
7	Dining Area	10'8" x 11'10"	127 sq. ft	Yes
8	Kitchen	21'6" x 13'5"	289 sq. ft	Yes
9	Garage	20'10" x 20'5"	425 sq. ft	No
10	Bedroom	11'5" x 14'8"	167 sq. ft	Yes
11	Hall	15'10" x 5'4"	84 sq. ft	Yes

Home data report

853 Walker Springs Rd,Knoxville,TN,US

#		Dimensions	sqft	Counted as living area
12	Foyer	6'5" x 11'10"	76 sq. ft	Yes
13	Primary Bedroom	13'9" x 13'5"	184 sq. ft	Yes
14	Family Room	19'8" x 11'5"	223 sq. ft	Yes

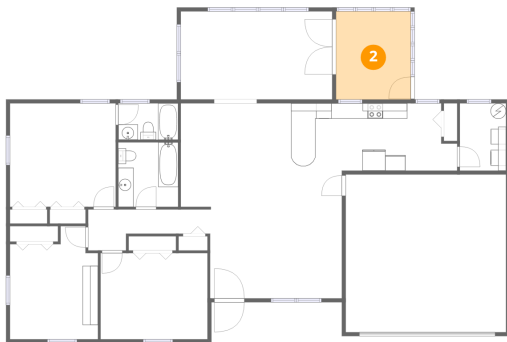
1 Floor 1 - Living Room



Dimensions: 14'4" x 13'5"
Area: 192 sq. ft
Counted as living area: Yes

Heated: Yes
Finished: Yes
Enclosed: Yes
Contiguous: Yes
Permitted: Yes
Wet space: No
Addition: No
Conversion: No

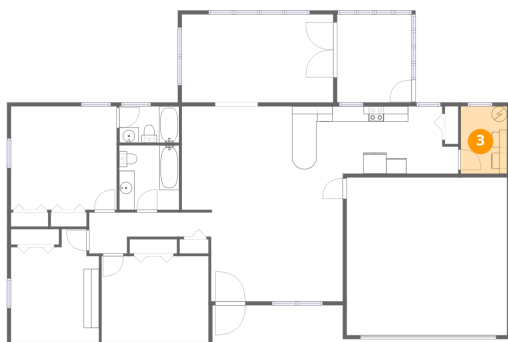
2 Floor 1 - Screened Porch



Dimensions: 9'8" x 11'5"
Area: 110 sq. ft
Counted as living area: No

Heated: No
Finished: No
Enclosed: No
Contiguous: Yes
Permitted: Yes
Wet space: No
Addition: No
Conversion: No

3 Floor 1 - Utility



Dimensions: 6'0" x 8'9"
Area: 52 sq. ft
Counted as living area: Yes

Heated: Yes
Finished: Yes
Enclosed: Yes
Contiguous: Yes
Permitted: Yes
Wet space: No
Addition: No
Conversion: No

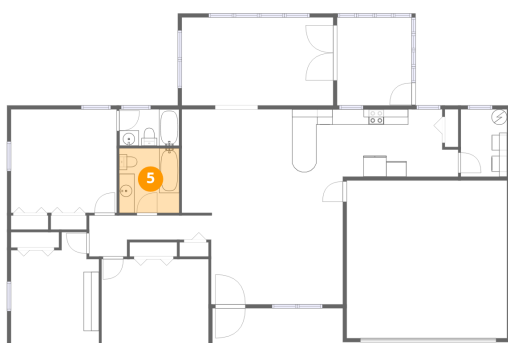
4 Floor 1 - Bath



Dimensions: 7'9" x 4'9"
Area: 37 sq. ft
Counted as living area: Yes

Heated: Yes
Finished: Yes
Enclosed: Yes
Contiguous: Yes
Permitted: Yes
Wet space: Yes
Addition: No
Conversion: No

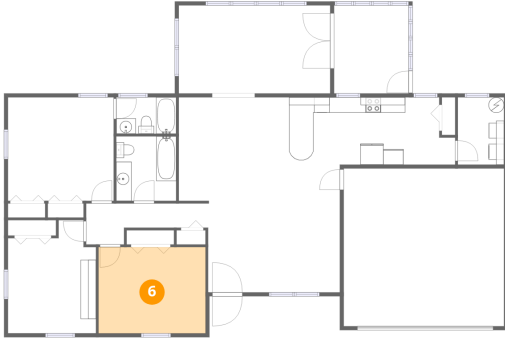
5 Floor 1 - Bath



Dimensions: 7'9" x 8'4"
Area: 65 sq. ft
Counted as living area: Yes

Heated: Yes
Finished: Yes
Enclosed: Yes
Contiguous: Yes
Permitted: Yes
Wet space: Yes
Addition: No
Conversion: No

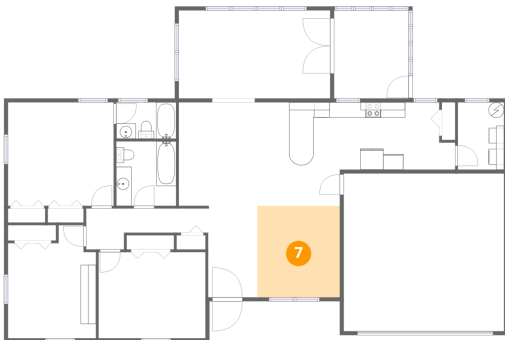
6 Floor 1 - Office



Dimensions: 13'10" x 11'2"
Area: 155 sq. ft
Counted as living area: Yes

Heated: Yes
Finished: Yes
Enclosed: Yes
Contiguous: Yes
Permitted: Yes
Wet space: No
Addition: No
Conversion: No

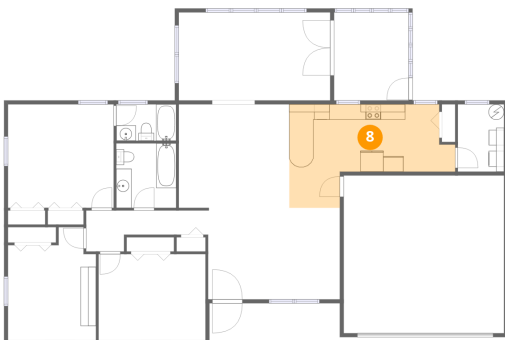
7 Floor 1 - Dining Area



Dimensions: 10'8" x 11'10"
Area: 127 sq. ft
Counted as living area: Yes

Heated: Yes
Finished: Yes
Enclosed: Yes
Contiguous: Yes
Permitted: Yes
Wet space: No
Addition: No
Conversion: No

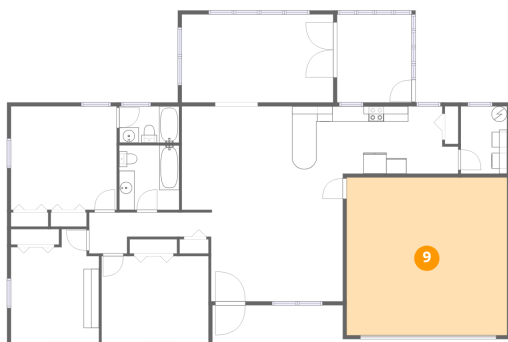
8 Floor 1 - Kitchen



Dimensions: 21'6" x 13'5"
Area: 289 sq. ft
Counted as living area: Yes

Heated: Yes
Finished: Yes
Enclosed: Yes
Contiguous: Yes
Permitted: Yes
Wet space: No
Addition: No
Conversion: No

9 Floor 1 - Garage



Dimensions: 20'10" x 20'5"

Area: 425 sq. ft

Counted as living area: No

Heated: No

Finished: No

Enclosed: Yes

Contiguous: Yes

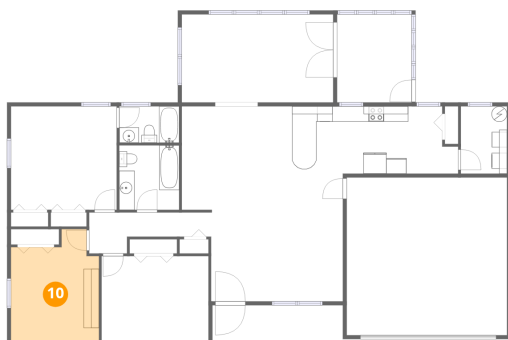
Permitted: Yes

Wet space: No

Addition: No

Conversion: No

10 Floor 1 - Bedroom



Dimensions: 11'5" x 14'8"

Area: 167 sq. ft

Counted as living area: Yes

Heated: Yes

Finished: Yes

Enclosed: Yes

Contiguous: Yes

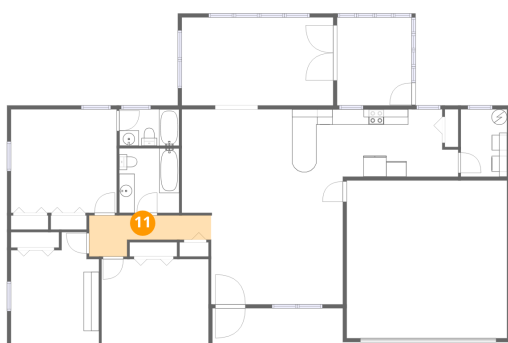
Permitted: Yes

Wet space: No

Addition: No

Conversion: No

11 Floor 1 - Hall



Dimensions: 15'10" x 5'4"

Area: 84 sq. ft

Counted as living area: Yes

Heated: Yes

Finished: Yes

Enclosed: Yes

Contiguous: Yes

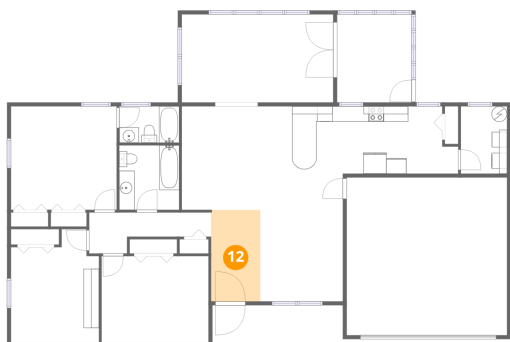
Permitted: Yes

Wet space: No

Addition: No

Conversion: No

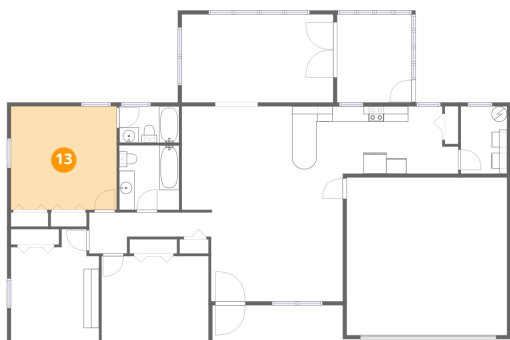
12 Floor 1 - Foyer



Dimensions: 6'5" x 11'10"
Area: 76 sq. ft
Counted as living area: Yes

Heated: Yes
Finished: Yes
Enclosed: Yes
Contiguous: Yes
Permitted: Yes
Wet space: No
Addition: No
Conversion: No

13 Floor 1 - Primary Bedroom



Dimensions: 13'9" x 13'5"
Area: 184 sq. ft
Counted as living area: Yes

Heated: Yes
Finished: Yes
Enclosed: Yes
Contiguous: Yes
Permitted: Yes
Wet space: No
Addition: No
Conversion: No

14 Floor 1 - Family Room



Dimensions: 19'8" x 11'5"
Area: 223 sq. ft
Counted as living area: Yes

Heated: Yes
Finished: Yes
Enclosed: Yes
Contiguous: Yes
Permitted: Yes
Wet space: No
Addition: No
Conversion: No