

## Home data report

**335 Daytona Drive, Hardy, Franklin County, Virginia, United States, 24101**



**Total Area: 2439 sq. ft**

Basement: 516 sq. ft, 1st Floor: 1160 sq. ft, 2nd Floor: 763 sq. ft

Excluded: Basement 587 sq. ft, Fireplace 39 sq. ft, Garage 605 sq. ft, Screened porch 156 sq. ft, Porch 334 sq. ft, Deck 532 sq. ft, Open to below 305 sq. ft, Walls: 276 sq. ft

## Property summary



**3**  
Floors



**3**  
Bedrooms

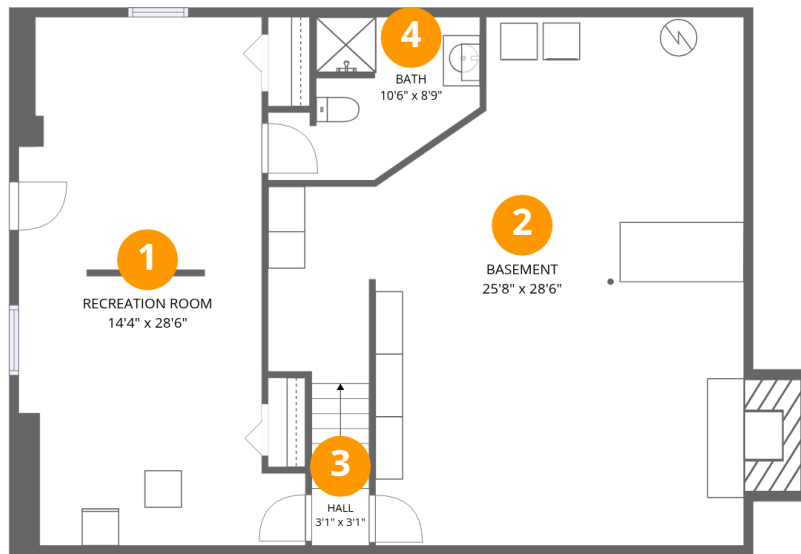


**3**  
Bathrooms



**1**  
Garages

335 Daytona Drive, Hardy, Franklin County, Virginia, United States, 24101



### Room dimensions

Floor 1 Below grade

Total:516sqft

Excluded: 609sqft

#		Dimensions	sqft	Counted as living area
1	Recreation Room	14'4" x 28'6"	369 sq. ft	Yes
2	Basement	25'8" x 28'6"	601 sq. ft	No
3	Hall	3'1" x 3'1"	27 sq. ft	Yes
4	Bath	10'6" x 8'9"	75 sq. ft	Yes

## Home data report

335 Daytona Drive, Hardy, Franklin County, Virginia, United States, 24101



## Room dimensions

Floor 2

Total:1160sqft

Excluded: 1644sqft

#		Dimensions	sqft	Counted as living area
5	Garage	26'1" x 23'2"	605 sq. ft	No
6	Bedroom	13'1" x 10'11"	143 sq. ft	Yes
7	Bedroom	13'6" x 10'2"	138 sq. ft	Yes
8	Bath	8'11" x 7'4"	52 sq. ft	Yes
9	Dining Area	12'0" x 14'5"	173 sq. ft	Yes
10	Screened Porch	16'1" x 9'9"	156 sq. ft	No
11	Hall	6'9" x 7'4"	39 sq. ft	Yes
12	Swimming Pool	15'8" x 13'10"	181 sq. ft	No
13	Kitchen	11'9" x 14'5"	170 sq. ft	Yes
14	Living Room	23'11" x 14'8"	362 sq. ft	Yes
15	Deck	20'2" x 31'6"	532 sq. ft	No

Home data report

**335 Daytona Drive, Hardy, Franklin County, Virginia, United States, 24101**

#		Dimensions	sqft	Counted as living area
16	Porch	40'9" x 8'2"	334 sq. ft	No

Home data report

335 Daytona Drive, Hardy, Franklin County, Virginia, United States, 24101



### Room dimensions

Floor 3

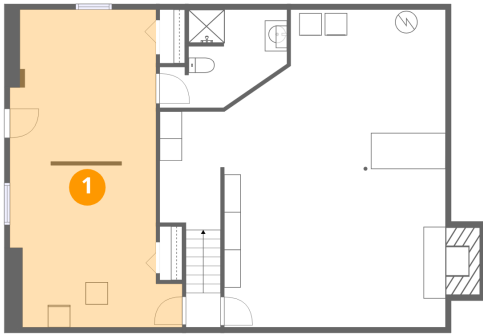
Total:763sqft

Excluded: 305sqft

#		Dimensions	sqft	Counted as living area
17	Family Room	23'11" x 14'5"	350 sq. ft	Yes
18	Open To Below	23'11" x 14'4"	305 sq. ft	No
19	Primary Bedroom	19'5" x 14'5"	263 sq. ft	Yes
20	W.I.C.	5'7" x 8'9"	48 sq. ft	Yes
21	Bath	9'7" x 8'9"	83 sq. ft	Yes

335 Daytona Drive, Hardy, Franklin County, Virginia, United States, 24101

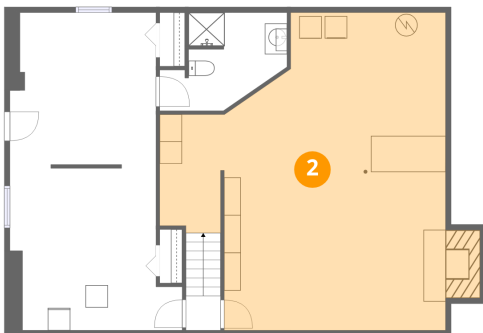
## 1 Floor 1 - Recreation Room



Dimensions: 14'4" x 28'6"  
Area: 369 sq. ft  
Counted as living area: Yes

Heated: Yes  
Finished: Yes  
Enclosed: Yes  
Contiguous: Yes  
Permitted: Yes  
Wet space: No  
Addition: No  
Conversion: No

## 2 Floor 1 - Basement

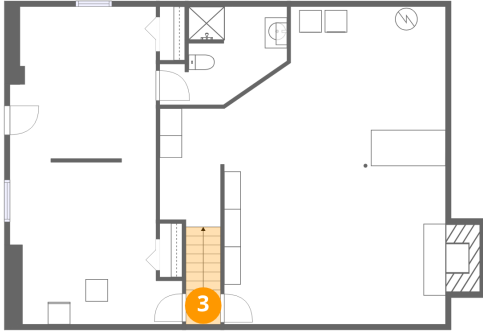


Dimensions: 25'8" x 28'6"  
Area: 601 sq. ft  
Counted as living area: No

Heated: Yes  
Finished: No  
Enclosed: Yes  
Contiguous: Yes  
Permitted: Yes  
Wet space: No  
Addition: No  
Conversion: No

335 Daytona Drive, Hardy, Franklin County, Virginia, United States, 24101

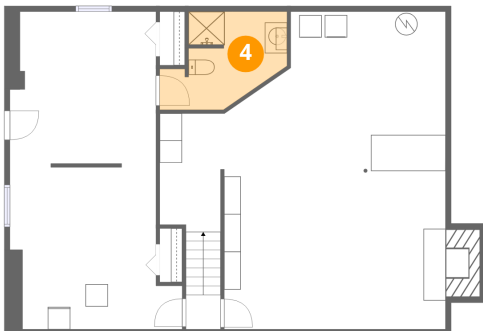
### 3 Floor 1 - Hall



Dimensions: 3'1" x 3'1"  
Area: 27 sq. ft  
Counted as living area: Yes

Heated: Yes  
Finished: Yes  
Enclosed: Yes  
Contiguous: Yes  
Permitted: Yes  
Wet space: No  
Addition: No  
Conversion: No

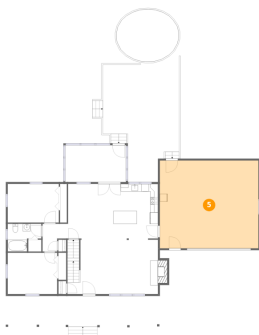
### 4 Floor 1 - Bath



Dimensions: 10'6" x 8'9"  
Area: 75 sq. ft  
Counted as living area: Yes

Heated: Yes  
Finished: Yes  
Enclosed: Yes  
Contiguous: Yes  
Permitted: Yes  
Wet space: Yes  
Addition: No  
Conversion: No

### 5 Floor 2 - Garage

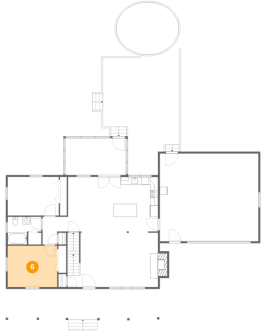


Dimensions: 26'1" x 23'2"  
Area: 605 sq. ft  
Counted as living area: No

Heated: No  
Finished: No  
Enclosed: Yes  
Contiguous: Yes  
Permitted: Yes  
Wet space: No  
Addition: No  
Conversion: No

335 Daytona Drive, Hardy, Franklin County, Virginia, United States, 24101

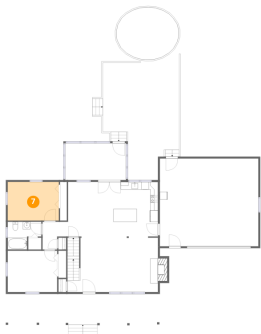
6 Floor 2 - Bedroom



Dimensions: 13'1" x 10'11"  
Area: 143 sq. ft  
Counted as living area: Yes

Heated: Yes  
Finished: Yes  
Enclosed: Yes  
Contiguous: Yes  
Permitted: Yes  
Wet space: No  
Addition: No  
Conversion: No

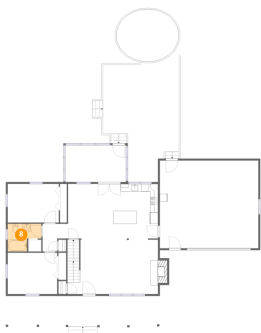
7 Floor 2 - Bedroom



Dimensions: 13'6" x 10'2"  
Area: 138 sq. ft  
Counted as living area: Yes

Heated: Yes  
Finished: Yes  
Enclosed: Yes  
Contiguous: Yes  
Permitted: Yes  
Wet space: No  
Addition: No  
Conversion: No

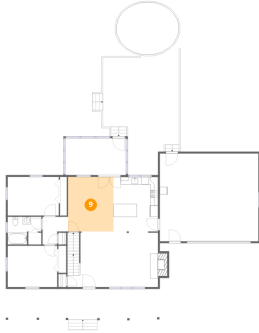
8 Floor 2 - Bath



Dimensions: 8'11" x 7'4"  
Area: 52 sq. ft  
Counted as living area: Yes

Heated: Yes  
Finished: Yes  
Enclosed: Yes  
Contiguous: Yes  
Permitted: Yes  
Wet space: Yes  
Addition: No  
Conversion: No

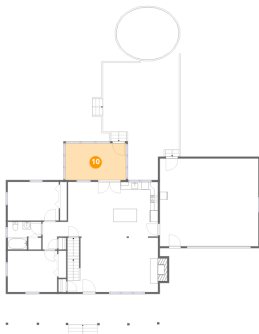
## 9 Floor 2 - Dining Area



Dimensions: 12'0" x 14'5"  
Area: 173 sq. ft  
Counted as living area: Yes

Heated: Yes  
Finished: Yes  
Enclosed: Yes  
Contiguous: Yes  
Permitted: Yes  
Wet space: No  
Addition: No  
Conversion: No

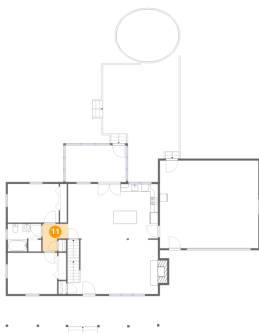
## 10 Floor 2 - Screened Porch



Dimensions: 16'1" x 9'9"  
Area: 156 sq. ft  
Counted as living area: No

Heated: No  
Finished: No  
Enclosed: No  
Contiguous: Yes  
Permitted: Yes  
Wet space: No  
Addition: No  
Conversion: No

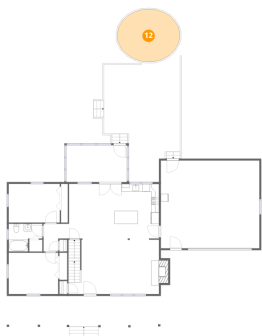
## 11 Floor 2 - Hall



Dimensions: 6'9" x 7'4"  
Area: 39 sq. ft  
Counted as living area: Yes

Heated: Yes  
Finished: Yes  
Enclosed: Yes  
Contiguous: Yes  
Permitted: Yes  
Wet space: No  
Addition: No  
Conversion: No

## 12 Floor 2 - Swimming Pool



Dimensions: 15'8" x 13'10"

Area: 181 sq. ft

Counted as living area: No

Heated: No

Finished: No

Enclosed: No

Contiguous: Yes

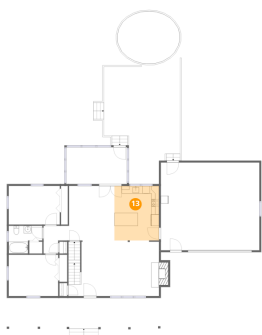
Permitted: No

Wet space: No

Addition: No

Conversion: No

## 13 Floor 2 - Kitchen



Dimensions: 11'9" x 14'5"

Area: 170 sq. ft

Counted as living area: Yes

Heated: Yes

Finished: Yes

Enclosed: Yes

Contiguous: Yes

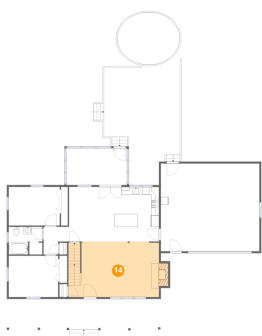
Permitted: Yes

Wet space: No

Addition: No

Conversion: No

## 14 Floor 2 - Living Room



Dimensions: 23'11" x 14'8"

Area: 362 sq. ft

Counted as living area: Yes

Heated: Yes

Finished: Yes

Enclosed: Yes

Contiguous: Yes

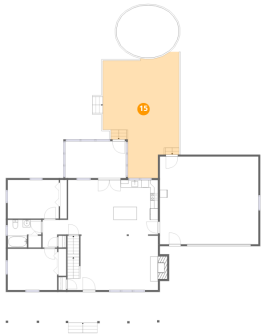
Permitted: Yes

Wet space: No

Addition: No

Conversion: No

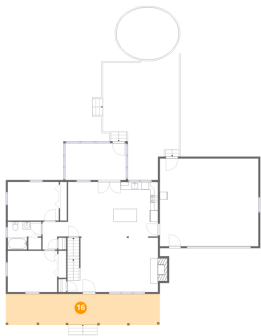
**15** Floor 2 - Deck



Dimensions: 20'2" x 31'6"  
Area: 532 sq. ft  
Counted as living area: No

Heated: No  
Finished: No  
Enclosed: No  
Contiguous: Yes  
Permitted: Yes  
Wet space: No  
Addition: No  
Conversion: No

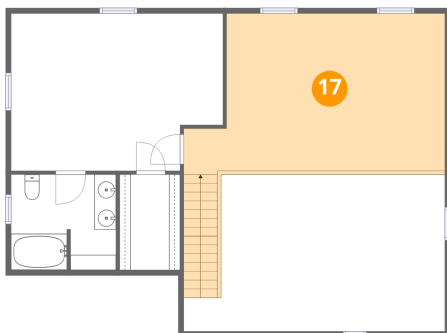
**16** Floor 2 - Porch



Dimensions: 40'9" x 8'2"  
Area: 334 sq. ft  
Counted as living area: No

Heated: No  
Finished: No  
Enclosed: No  
Contiguous: Yes  
Permitted: Yes  
Wet space: No  
Addition: No  
Conversion: No

**17** Floor 3 - Family Room

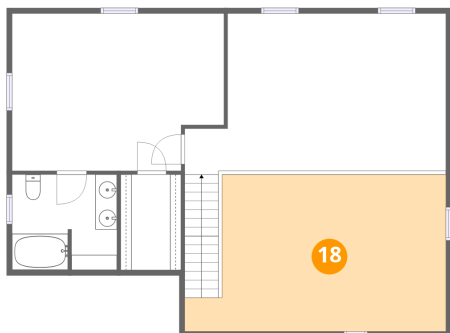


Dimensions: 23'11" x 14'5"  
Area: 350 sq. ft  
Counted as living area: Yes

Heated: Yes  
Finished: Yes  
Enclosed: Yes  
Contiguous: Yes  
Permitted: Yes  
Wet space: No  
Addition: No  
Conversion: No

335 Daytona Drive, Hardy, Franklin County, Virginia, United States, 24101

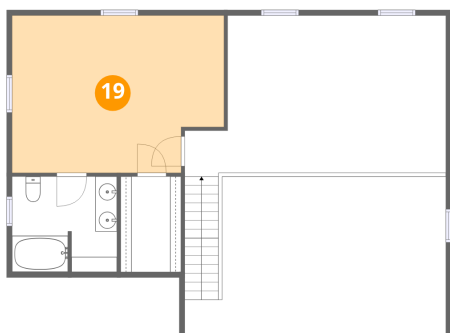
### 18 Floor 3 - Open To Below



Dimensions: 23'11" x 14'4"  
Area: 305 sq. ft  
Counted as living area: No

Heated: No  
Finished: No  
Enclosed: No  
Contiguous: Yes  
Permitted: No  
Wet space: No  
Addition: No  
Conversion: No

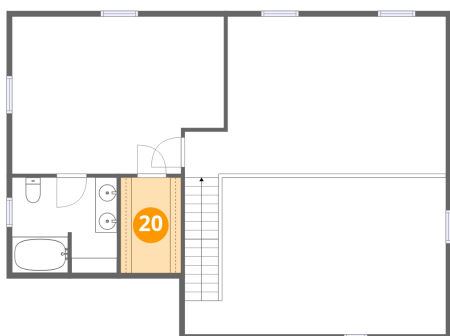
### 19 Floor 3 - Primary Bedroom



Dimensions: 19'5" x 14'5"  
Area: 263 sq. ft  
Counted as living area: Yes

Heated: Yes  
Finished: Yes  
Enclosed: Yes  
Contiguous: Yes  
Permitted: Yes  
Wet space: No  
Addition: No  
Conversion: No

### 20 Floor 3 - W.I.C.

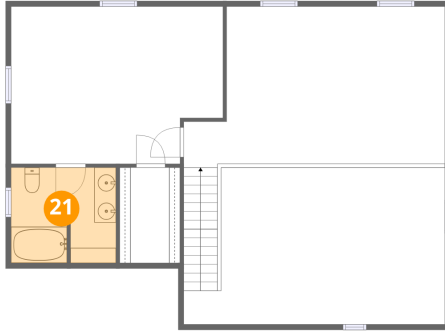


Dimensions: 5'7" x 8'9"  
Area: 48 sq. ft  
Counted as living area: Yes

Heated: Yes  
Finished: Yes  
Enclosed: Yes  
Contiguous: Yes  
Permitted: Yes  
Wet space: No  
Addition: No  
Conversion: No

335 Daytona Drive, Hardy, Franklin County, Virginia, United States, 24101

**21** Floor 3 - Bath



Dimensions: 9'7" x 8'9"  
Area: 83 sq. ft  
Counted as living area: Yes

Heated: Yes  
Finished: Yes  
Enclosed: Yes  
Contiguous: Yes  
Permitted: Yes  
Wet space: Yes  
Addition: No  
Conversion: No