

Home report

7522 New Barrens Road, Alpine Hills, Hollins, Roanoke,  
Roanoke County, Virginia, United States, 24019



Total Area: 3091 sq. ft

Below Ground: 823 sq. ft, Floor 2: 1007 sq. ft, Floor 3: 1261 sq. ft

Excluded: Utility 168 sq. ft, Garage 405 sq. ft, Deck 243 sq. ft, Porch 131 sq. ft, Walls: 251 sq. ft

Property summary

 **3** Floors

 **4** Bedrooms

 **3** Bathrooms

Home report

**7522 New Barrens Road, Alpine Hills, Hollins, Roanoke,  
Roanoke County, Virginia, United States, 24019**



**1**  
Half baths



**1**  
Garages

Home report

7522 New Barrens Road, Alpine Hills, Hollins, Roanoke,  
Roanoke County, Virginia, United States, 24019



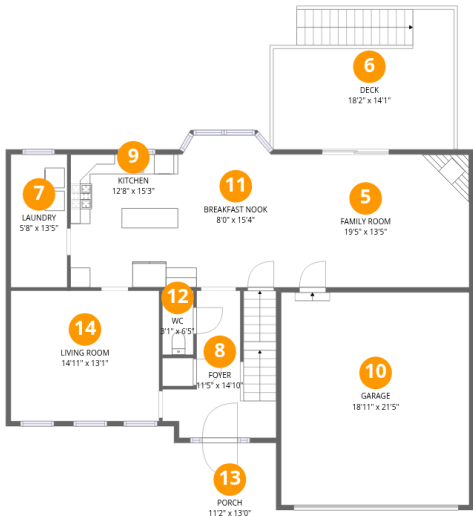
Room dimensions

Floor 1 Below ground Total:823sqft   Excluded: 168sqft

#		Max Dimensions	sqft	Included
1	Utility	18'2" x 13'1"	168 sq. ft	No
2	Bath	9'3" x 7'1"	65 sq. ft	Yes
3	Recreation Room	45'5" x 13'5"	617 sq. ft	Yes
4	Hall	8'2" x 14'10"	119 sq. ft	Yes

Home report

7522 New Barrens Road, Alpine Hills, Hollins, Roanoke,  
Roanoke County, Virginia, United States, 24019



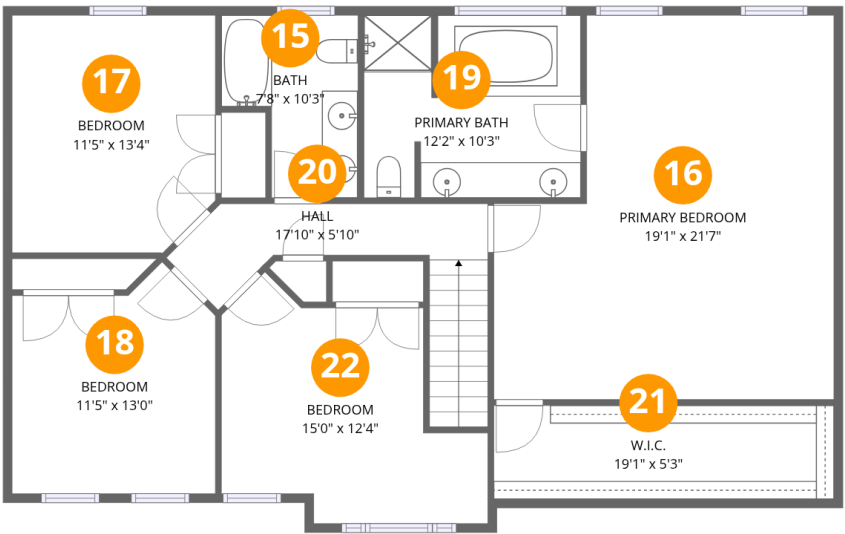
Room dimensions

Floor 2 Total:1007sqft    Excluded: 779sqft

#		Max Dimensions	sqft	Included
5	Family Room	19'5" x 13'5"	260 sq. ft	Yes
6	Deck	18'2" x 14'1"	243 sq. ft	No
7	Laundry	5'8" x 13'5"	76 sq. ft	Yes
8	Foyer	11'5" x 14'10"	130 sq. ft	Yes
9	Kitchen	12'8" x 15'3"	171 sq. ft	Yes
10	Garage	18'11" x 21'5"	405 sq. ft	No
11	Breakfast Nook	8'0" x 15'4"	120 sq. ft	Yes
12	WC	3'1" x 6'5"	20 sq. ft	Yes
13	Porch	11'2" x 13'0"	131 sq. ft	No
14	Living Room	14'11" x 13'1"	196 sq. ft	Yes

Home report

7522 New Barrens Road, Alpine Hills, Hollins, Roanoke,  
Roanoke County, Virginia, United States, 24019



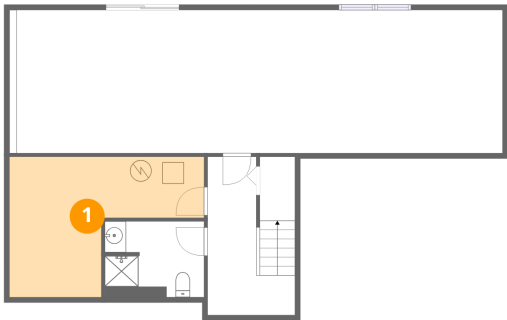
Room dimensions

Floor 3 Total:1261sqft   Excluded: 0sqft

#		Max Dimensions	sqft	Included
15	Bath	7'8" x 10'3"	64 sq. ft	Yes
16	Primary Bedroom	19'1" x 21'7"	356 sq. ft	Yes
17	Bedroom	11'5" x 13'4"	148 sq. ft	Yes
18	Bedroom	11'5" x 13'0"	130 sq. ft	Yes
19	Primary Bath	12'2" x 10'3"	122 sq. ft	Yes
20	Hall	17'10" x 5'10"	89 sq. ft	Yes
21	W.I.C.	19'1" x 5'3"	100 sq. ft	Yes
22	Bedroom	15'0" x 12'4"	151 sq. ft	Yes

7522 New Barrens Road, Alpine Hills, Hollins, Roanoke,  
Roanoke County, Virginia, United States, 24019

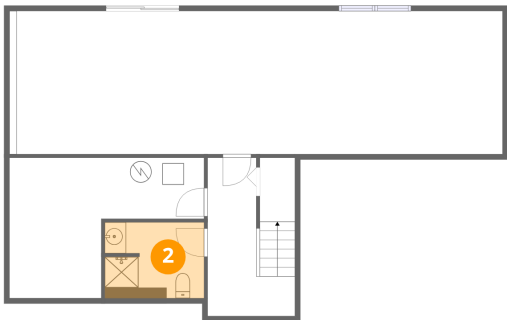
1 Floor 1 - Utility



Max Dimensions: 18'2" x 13'1"  
Calculated Area: 168 sq. ft  
Included: No

Heated: Yes  
Finished: No  
Enclosed: Yes  
Contiguous: Yes  
Permitted: Yes  
Wet space: No  
Addition: No  
Conversion: No

2 Floor 1 - Bath

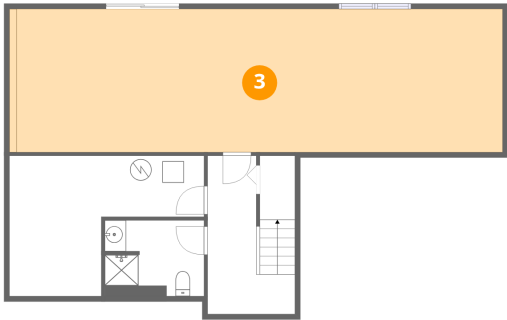


Max Dimensions: 9'3" x 7'1"  
Calculated Area: 65 sq. ft  
Included: Yes

Heated: Yes  
Finished: Yes  
Enclosed: Yes  
Contiguous: Yes  
Permitted: Yes  
Wet space: Yes  
Addition: No  
Conversion: No

7522 New Barrens Road, Alpine Hills, Hollins, Roanoke,  
Roanoke County, Virginia, United States, 24019

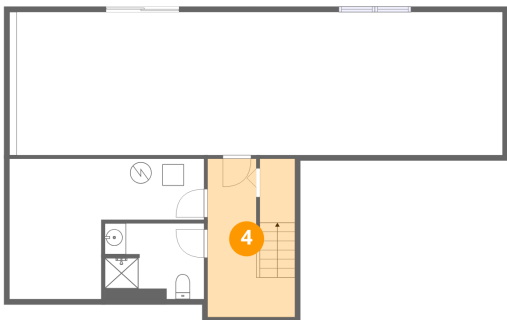
3 Floor 1 - Recreation Room



Max Dimensions: 45'5" x 13'5"  
Calculated Area: 617 sq. ft  
Included: Yes

Heated: Yes  
Finished: Yes  
Enclosed: Yes  
Contiguous: Yes  
Permitted: Yes  
Wet space: No  
Addition: No  
Conversion: No

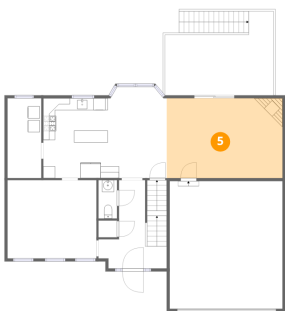
4 Floor 1 - Hall



Max Dimensions: 8'2" x 14'10"  
Calculated Area: 119 sq. ft  
Included: Yes

Heated: Yes  
Finished: Yes  
Enclosed: Yes  
Contiguous: Yes  
Permitted: Yes  
Wet space: No  
Addition: No  
Conversion: No

5 Floor 2 - Family Room

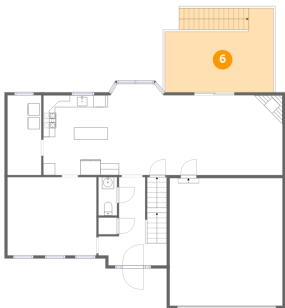


Max Dimensions: 19'5" x 13'5"  
Calculated Area: 260 sq. ft  
Included: Yes

Heated: Yes  
Finished: Yes  
Enclosed: Yes  
Contiguous: Yes  
Permitted: Yes  
Wet space: No  
Addition: No  
Conversion: No

7522 New Barrens Road, Alpine Hills, Hollins, Roanoke,  
Roanoke County, Virginia, United States, 24019

6 Floor 2 - Deck



Max Dimensions: 18'2" x 14'1"  
Calculated Area: 243 sq. ft  
Included: No

Heated: No  
Finished: No  
Enclosed: No  
Contiguous: Yes  
Permitted: Yes  
Wet space: No  
Addition: No  
Conversion: No

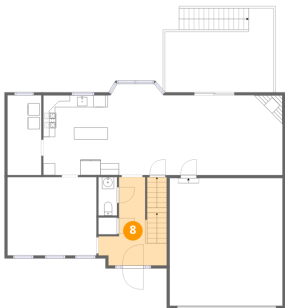
7 Floor 2 - Laundry



Max Dimensions: 5'8" x 13'5"  
Calculated Area: 76 sq. ft  
Included: Yes

Heated: Yes  
Finished: Yes  
Enclosed: Yes  
Contiguous: Yes  
Permitted: Yes  
Wet space: No  
Addition: No  
Conversion: No

8 Floor 2 - Foyer



Max Dimensions: 11'5" x 14'10"  
Calculated Area: 130 sq. ft  
Included: Yes

Heated: Yes  
Finished: Yes  
Enclosed: Yes  
Contiguous: Yes  
Permitted: Yes  
Wet space: No  
Addition: No  
Conversion: No



7522 New Barrens Road, Alpine Hills, Hollins, Roanoke,  
Roanoke County, Virginia, United States, 24019

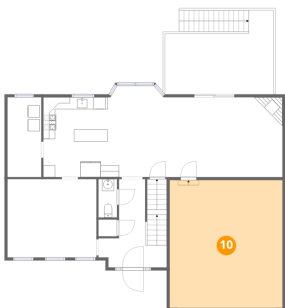
9 Floor 2 - Kitchen



Max Dimensions: 12'8" x 15'3"  
Calculated Area: 171 sq. ft  
Included: Yes

Heated: Yes  
Finished: Yes  
Enclosed: Yes  
Contiguous: Yes  
Permitted: Yes  
Wet space: No  
Addition: No  
Conversion: No

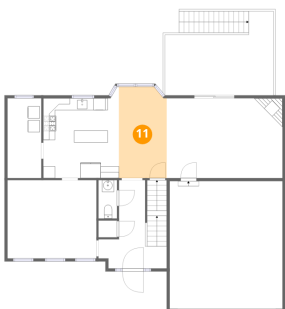
10 Floor 2 - Garage



Max Dimensions: 18'11" x 21'5"  
Calculated Area: 405 sq. ft  
Included: No

Heated: No  
Finished: No  
Enclosed: Yes  
Contiguous: Yes  
Permitted: Yes  
Wet space: No  
Addition: No  
Conversion: No

11 Floor 2 - Breakfast Nook

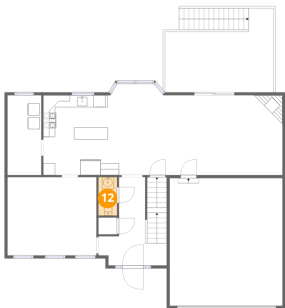


Max Dimensions: 8'0" x 15'4"  
Calculated Area: 120 sq. ft  
Included: Yes

Heated: Yes  
Finished: Yes  
Enclosed: Yes  
Contiguous: Yes  
Permitted: Yes  
Wet space: No  
Addition: No  
Conversion: No

7522 New Barrens Road, Alpine Hills, Hollins, Roanoke,  
Roanoke County, Virginia, United States, 24019

12 Floor 2 - WC



Max Dimensions: 3'1" x 6'5"  
Calculated Area: 20 sq. ft  
Included: Yes

Heated: Yes  
Finished: Yes  
Enclosed: Yes  
Contiguous: Yes  
Permitted: Yes  
Wet space: Yes  
Addition: No  
Conversion: No

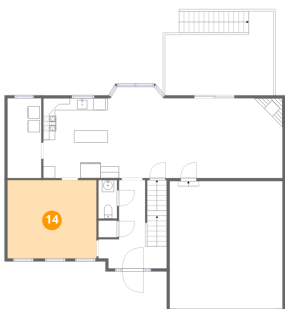
13 Floor 2 - Porch



Max Dimensions: 11'2" x 13'0"  
Calculated Area: 131 sq. ft  
Included: No

Heated: No  
Finished: No  
Enclosed: No  
Contiguous: Yes  
Permitted: Yes  
Wet space: No  
Addition: No  
Conversion: No

14 Floor 2 - Living Room

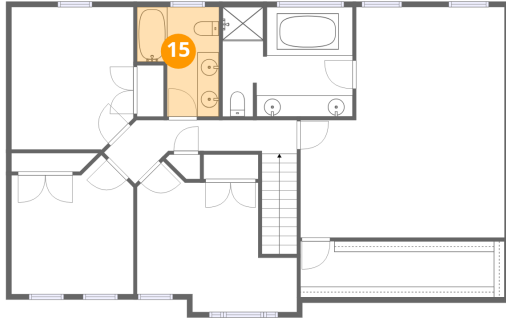


Max Dimensions: 14'11" x 13'1"  
Calculated Area: 196 sq. ft  
Included: Yes

Heated: Yes  
Finished: Yes  
Enclosed: Yes  
Contiguous: Yes  
Permitted: Yes  
Wet space: No  
Addition: No  
Conversion: No

7522 New Barrens Road, Alpine Hills, Hollins, Roanoke,  
Roanoke County, Virginia, United States, 24019

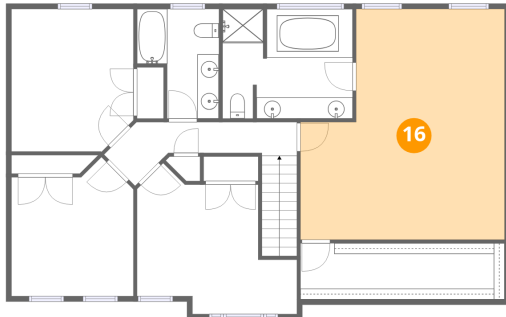
### 15 Floor 3 - Bath



Max Dimensions: 7'8" x 10'3"  
Calculated Area: 64 sq. ft  
Included: Yes

Heated: Yes  
Finished: Yes  
Enclosed: Yes  
Contiguous: Yes  
Permitted: Yes  
Wet space: Yes  
Addition: No  
Conversion: No

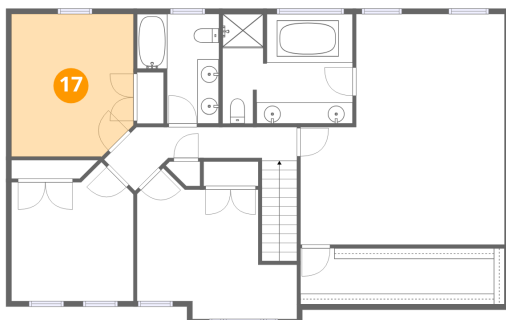
### 16 Floor 3 - Primary Bedroom



Max Dimensions: 19'1" x 21'7"  
Calculated Area: 356 sq. ft  
Included: Yes

Heated: Yes  
Finished: Yes  
Enclosed: Yes  
Contiguous: Yes  
Permitted: Yes  
Wet space: No  
Addition: No  
Conversion: No

### 17 Floor 3 - Bedroom

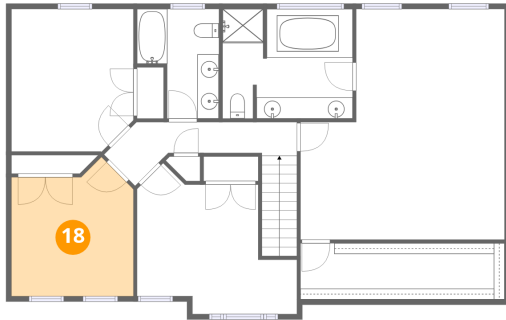


Max Dimensions: 11'5" x 13'4"  
Calculated Area: 148 sq. ft  
Included: Yes

Heated: Yes  
Finished: Yes  
Enclosed: Yes  
Contiguous: Yes  
Permitted: Yes  
Wet space: No  
Addition: No  
Conversion: No

7522 New Barrens Road, Alpine Hills, Hollins, Roanoke,  
Roanoke County, Virginia, United States, 24019

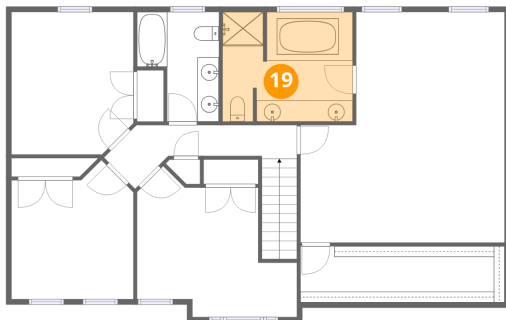
### 18 Floor 3 - Bedroom



Max Dimensions: 11'5" x 13'0"  
Calculated Area: 130 sq. ft  
Included: Yes

Heated: Yes  
Finished: Yes  
Enclosed: Yes  
Contiguous: Yes  
Permitted: Yes  
Wet space: No  
Addition: No  
Conversion: No

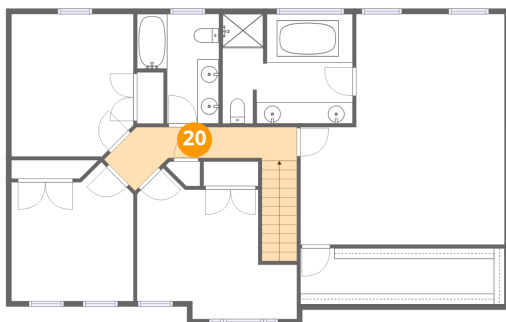
### 19 Floor 3 - Primary Bath



Max Dimensions: 12'2" x 10'3"  
Calculated Area: 122 sq. ft  
Included: Yes

Heated: Yes  
Finished: Yes  
Enclosed: Yes  
Contiguous: Yes  
Permitted: Yes  
Wet space: Yes  
Addition: No  
Conversion: No

### 20 Floor 3 - Hall

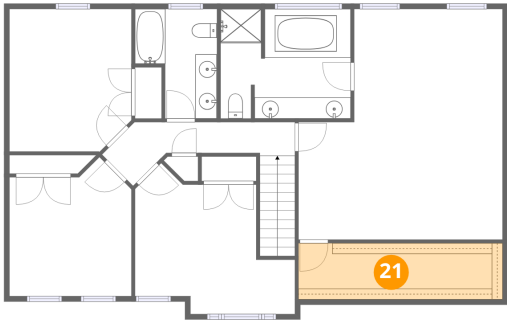


Max Dimensions: 17'10" x 5'10"  
Calculated Area: 89 sq. ft  
Included: Yes

Heated: Yes  
Finished: Yes  
Enclosed: Yes  
Contiguous: Yes  
Permitted: Yes  
Wet space: No  
Addition: No  
Conversion: No

7522 New Barrens Road, Alpine Hills, Hollins, Roanoke,  
Roanoke County, Virginia, United States, 24019

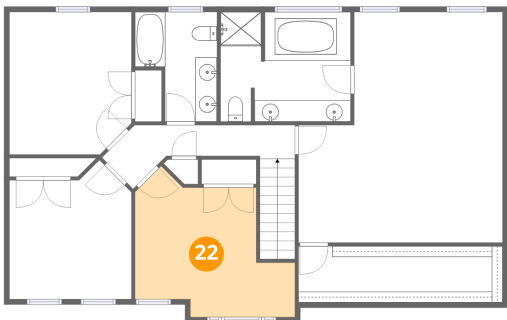
21 Floor 3 - W.I.C.



Max Dimensions: 19'1" x 5'3"  
Calculated Area: 100 sq. ft  
Included: Yes

Heated: Yes  
Finished: Yes  
Enclosed: Yes  
Contiguous: Yes  
Permitted: Yes  
Wet space: No  
Addition: No  
Conversion: No

22 Floor 3 - Bedroom



Max Dimensions: 15'0" x 12'4"  
Calculated Area: 151 sq. ft  
Included: Yes

Heated: Yes  
Finished: Yes  
Enclosed: Yes  
Contiguous: Yes  
Permitted: Yes  
Wet space: No  
Addition: No  
Conversion: No