

Home data report

341 Springwood Road, Fincastle, Virginia 24090, United States



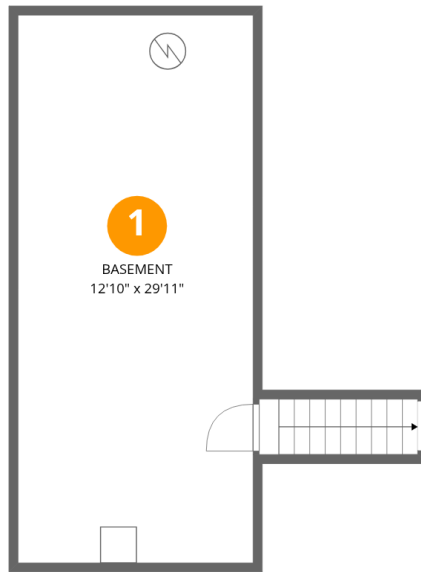
**Total Area: 2742 sq. ft**

Basement: 27 sq. ft, 1st Floor: 1546 sq. ft, 2nd Floor: 1169 sq. ft

Excluded: Basement 387 sq. ft, Garage 538 sq. ft, Porch 359 sq. ft, Deck 318 sq. ft, Walls: 265 sq. ft

## Property summary





## Room dimensions

Floor 1 Below grade

Total:27sqft

Excluded: 387sqft

#		Dimensions	sqft	Counted as living area
1	Basement	12'10" x 29'11"	387 sq. ft	No



## Room dimensions

Floor 2

Total:1546sqft

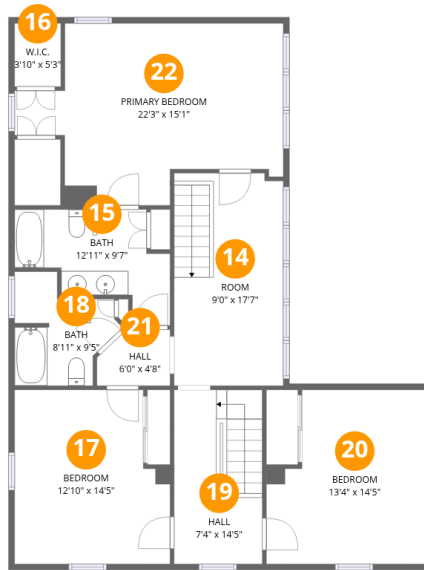
Excluded: 1215sqft

#		Dimensions	sqft	Counted as living area
2	Family Room	24'9" x 20'8"	479 sq. ft	Yes
3	Bath	9'0" x 5'7"	51 sq. ft	Yes
4	Foyer	7'4" x 14'5"	91 sq. ft	Yes
5	Garage	23'3" x 23'1"	538 sq. ft	No
6	Dining Room	12'11" x 14'7"	188 sq. ft	Yes
7	Living Room	12'11" x 14'5"	186 sq. ft	Yes
8	Laundry	5'1" x 5'8"	29 sq. ft	Yes
9	Room	5'1" x 9'1"	46 sq. ft	Yes
10	Room	13'4" x 14'5"	193 sq. ft	Yes
11	Porch	34'7" x 8'8"	359 sq. ft	No
12	Deck	20'5" x 15'5"	318 sq. ft	No

Home data report

**341 Springwood Road, Fincastle, Virginia 24090, United States**

#		Dimensions	sqft	Counted as living area
13	Kitchen	12'11" x 15'1"	194 sq. ft	Yes



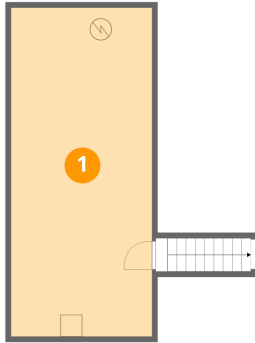
## Room dimensions

Floor 3

Total:1169sqft Excluded: 0sqft

#		Dimensions	sqft	Counted as living area
14	Room	9'0" x 17'7"	158 sq. ft	Yes
15	Bath	12'11" x 9'7"	83 sq. ft	Yes
16	W.I.C.	3'10" x 5'3"	20 sq. ft	Yes
17	Bedroom	12'10" x 14'5"	171 sq. ft	Yes
18	Bath	8'11" x 9'5"	61 sq. ft	Yes
19	Hall	7'4" x 14'5"	105 sq. ft	Yes
20	Bedroom	13'4" x 14'5"	173 sq. ft	Yes
21	Hall	6'0" x 4'8"	25 sq. ft	Yes
22	Primary Bedroom	22'3" x 15'1"	261 sq. ft	Yes

## 1 Floor 1 - Basement



Dimensions: 12'10" x 29'11"  
Area: 387 sq. ft  
Counted as living area: No

Heated: Yes  
Finished: No  
Enclosed: Yes  
Contiguous: Yes  
Permitted: Yes  
Wet space: No  
Addition: No  
Conversion: No

## 2 Floor 2 - Family Room



Dimensions: 24'9" x 20'8"  
Area: 479 sq. ft  
Counted as living area: Yes

Heated: Yes  
Finished: Yes  
Enclosed: Yes  
Contiguous: Yes  
Permitted: Yes  
Wet space: No  
Addition: No  
Conversion: No

### 3 Floor 2 - Bath



Dimensions: 9'0" x 5'7"  
Area: 51 sq. ft  
Counted as living area: Yes

Heated: Yes  
Finished: Yes  
Enclosed: Yes  
Contiguous: Yes  
Permitted: Yes  
Wet space: Yes  
Addition: No  
Conversion: No

### 4 Floor 2 - Foyer



Dimensions: 7'4" x 14'5"  
Area: 91 sq. ft  
Counted as living area: Yes

Heated: Yes  
Finished: Yes  
Enclosed: Yes  
Contiguous: Yes  
Permitted: Yes  
Wet space: No  
Addition: No  
Conversion: No

### 5 Floor 2 - Garage



Dimensions: 23'3" x 23'1"  
Area: 538 sq. ft  
Counted as living area: No

Heated: No  
Finished: No  
Enclosed: Yes  
Contiguous: Yes  
Permitted: Yes  
Wet space: No  
Addition: No  
Conversion: No

## 6 Floor 2 - Dining Room



Dimensions: 12'11" x 14'7"  
Area: 188 sq. ft  
Counted as living area: Yes

Heated: Yes  
Finished: Yes  
Enclosed: Yes  
Contiguous: Yes  
Permitted: Yes  
Wet space: No  
Addition: No  
Conversion: No

## 7 Floor 2 - Living Room



Dimensions: 12'11" x 14'5"  
Area: 186 sq. ft  
Counted as living area: Yes

Heated: Yes  
Finished: Yes  
Enclosed: Yes  
Contiguous: Yes  
Permitted: Yes  
Wet space: No  
Addition: No  
Conversion: No

## 8 Floor 2 - Laundry



Dimensions: 5'1" x 5'8"  
Area: 29 sq. ft  
Counted as living area: Yes

Heated: Yes  
Finished: Yes  
Enclosed: Yes  
Contiguous: Yes  
Permitted: Yes  
Wet space: No  
Addition: No  
Conversion: No

**9** Floor 2 - Room



Dimensions: 5'1" x 9'1"  
Area: 46 sq. ft  
Counted as living area: Yes

Heated: Yes  
Finished: Yes  
Enclosed: Yes  
Contiguous: Yes  
Permitted: Yes  
Wet space: No  
Addition: No  
Conversion: No

**10** Floor 2 - Room



Dimensions: 13'4" x 14'5"  
Area: 193 sq. ft  
Counted as living area: Yes

Heated: Yes  
Finished: Yes  
Enclosed: Yes  
Contiguous: Yes  
Permitted: Yes  
Wet space: No  
Addition: No  
Conversion: No

**11** Floor 2 - Porch



Dimensions: 34'7" x 8'8"  
Area: 359 sq. ft  
Counted as living area: No

Heated: No  
Finished: No  
Enclosed: No  
Contiguous: Yes  
Permitted: Yes  
Wet space: No  
Addition: No  
Conversion: No

## 12 Floor 2 - Deck



Dimensions: 20'5" x 15'5"  
Area: 318 sq. ft  
Counted as living area: No

Heated: No  
Finished: No  
Enclosed: No  
Contiguous: Yes  
Permitted: Yes  
Wet space: No  
Addition: No  
Conversion: No

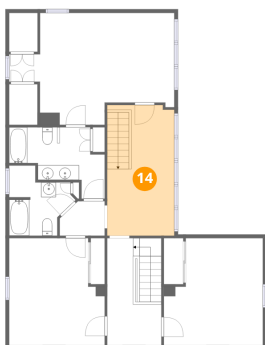
## 13 Floor 2 - Kitchen



Dimensions: 12'11" x 15'1"  
Area: 194 sq. ft  
Counted as living area: Yes

Heated: Yes  
Finished: Yes  
Enclosed: Yes  
Contiguous: Yes  
Permitted: Yes  
Wet space: No  
Addition: No  
Conversion: No

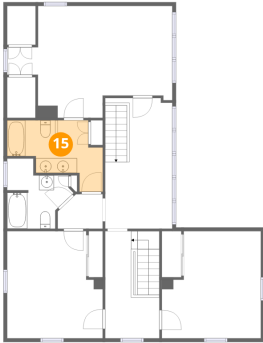
## 14 Floor 3 - Room



Dimensions: 9'0" x 17'7"  
Area: 158 sq. ft  
Counted as living area: Yes

Heated: Yes  
Finished: Yes  
Enclosed: Yes  
Contiguous: Yes  
Permitted: Yes  
Wet space: No  
Addition: No  
Conversion: No

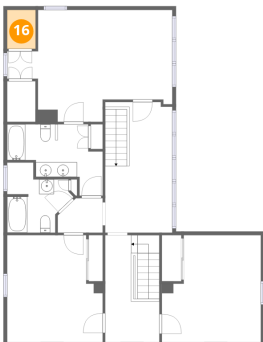
**15** Floor 3 - Bath



Dimensions: 12'11" x 9'7"  
Area: 83 sq. ft  
Counted as living area: Yes

Heated: Yes  
Finished: Yes  
Enclosed: Yes  
Contiguous: Yes  
Permitted: Yes  
Wet space: Yes  
Addition: No  
Conversion: No

**16** Floor 3 - W.I.C.



Dimensions: 3'10" x 5'3"  
Area: 20 sq. ft  
Counted as living area: Yes

Heated: Yes  
Finished: Yes  
Enclosed: Yes  
Contiguous: Yes  
Permitted: Yes  
Wet space: No  
Addition: No  
Conversion: No

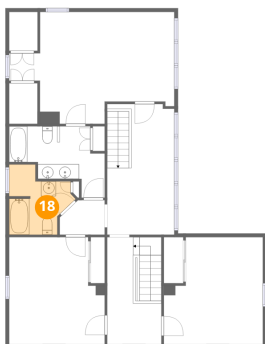
**17** Floor 3 - Bedroom



Dimensions: 12'10" x 14'5"  
Area: 171 sq. ft  
Counted as living area: Yes

Heated: Yes  
Finished: Yes  
Enclosed: Yes  
Contiguous: Yes  
Permitted: Yes  
Wet space: No  
Addition: No  
Conversion: No

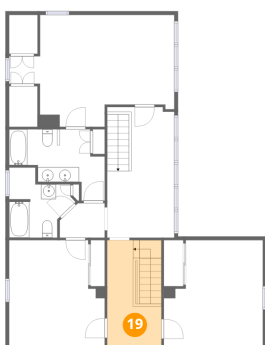
**18** Floor 3 - Bath



Dimensions: 8'11" x 9'5"  
Area: 61 sq. ft  
Counted as living area: Yes

Heated: Yes  
Finished: Yes  
Enclosed: Yes  
Contiguous: Yes  
Permitted: Yes  
Wet space: Yes  
Addition: No  
Conversion: No

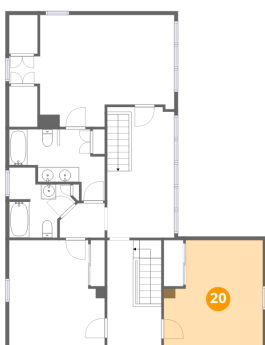
**19** Floor 3 - Hall



Dimensions: 7'4" x 14'5"  
Area: 105 sq. ft  
Counted as living area: Yes

Heated: Yes  
Finished: Yes  
Enclosed: Yes  
Contiguous: Yes  
Permitted: Yes  
Wet space: No  
Addition: No  
Conversion: No

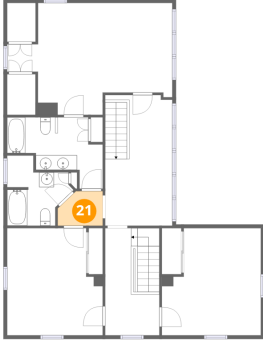
**20** Floor 3 - Bedroom



Dimensions: 13'4" x 14'5"  
Area: 173 sq. ft  
Counted as living area: Yes

Heated: Yes  
Finished: Yes  
Enclosed: Yes  
Contiguous: Yes  
Permitted: Yes  
Wet space: No  
Addition: No  
Conversion: No

### 21 Floor 3 - Hall



Dimensions: 6'0" x 4'8"  
Area: 25 sq. ft  
Counted as living area: Yes

Heated: Yes  
Finished: Yes  
Enclosed: Yes  
Contiguous: Yes  
Permitted: Yes  
Wet space: No  
Addition: No  
Conversion: No

### 22 Floor 3 - Primary Bedroom



Dimensions: 22'3" x 15'1"  
Area: 261 sq. ft  
Counted as living area: Yes

Heated: Yes  
Finished: Yes  
Enclosed: Yes  
Contiguous: Yes  
Permitted: Yes  
Wet space: No  
Addition: No  
Conversion: No