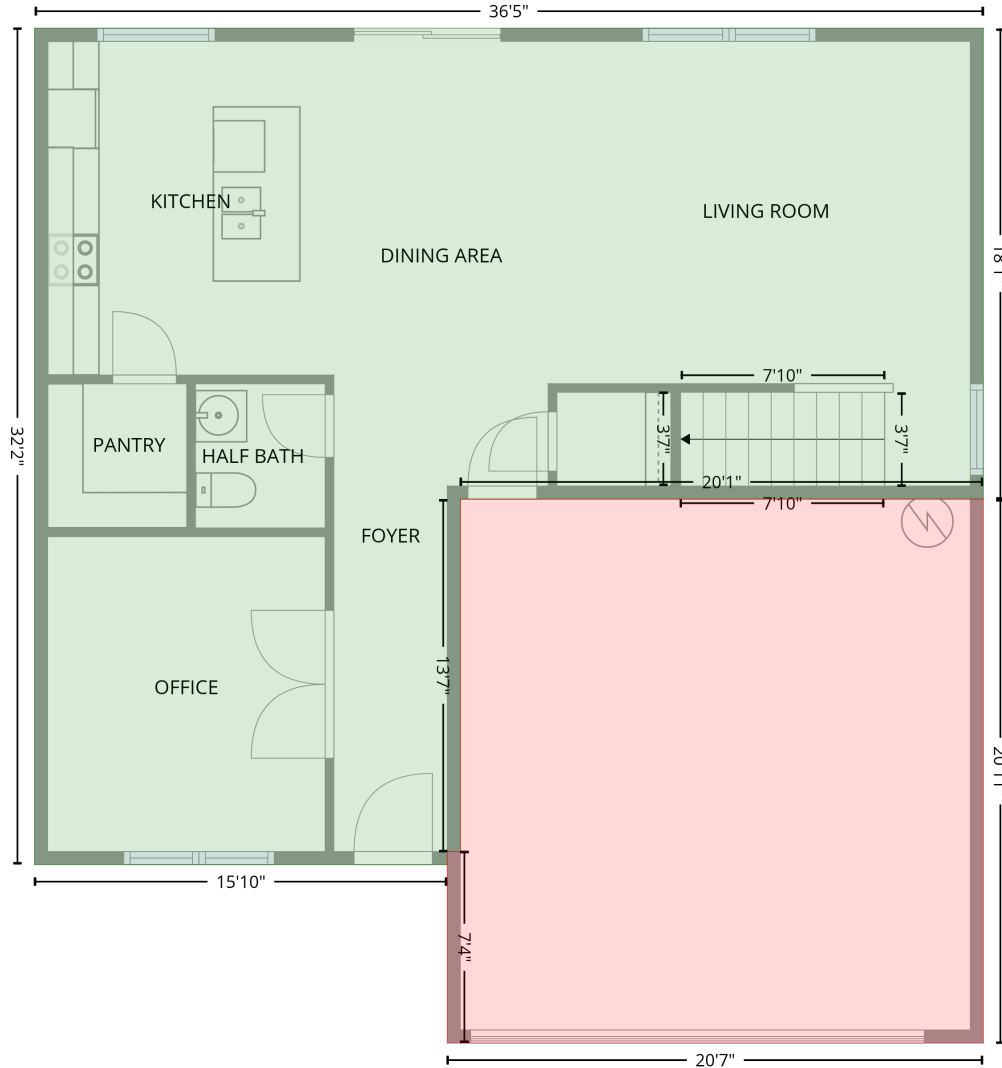


1338 Hickory Point Drive, Lexington, Davidson County, North Carolina, United States, 27292

Gross Living Area: 2282 sq. ft

Level 1

1st floor
[AREA: 888]



GARAGE (1)
[AREA: 423]

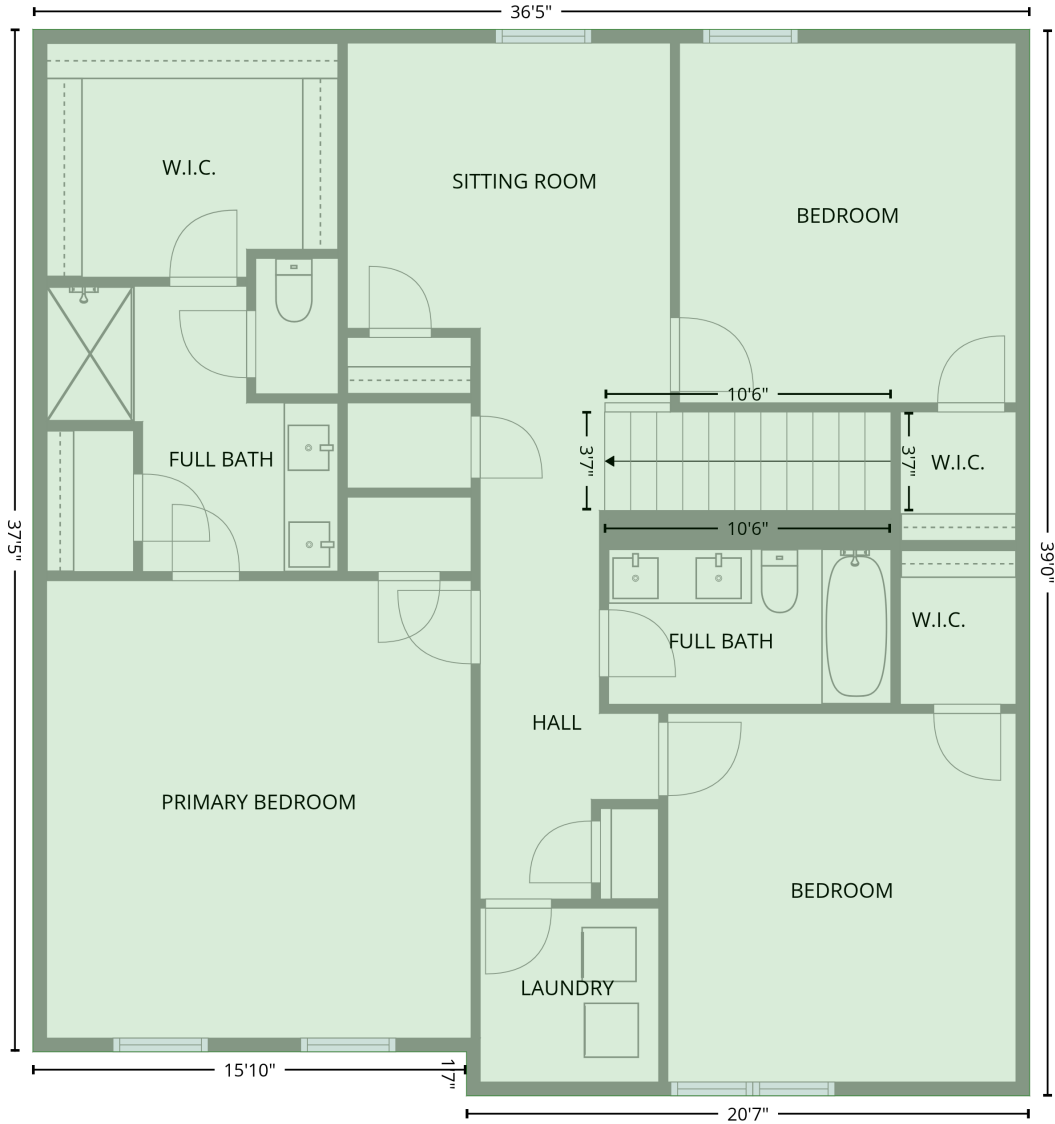
Space	Area (sq. ft)	Calculation
1st floor (Living area)	888	Coordinate Polygon Area Algorithm using inches $-((1.5 + 438.6) * (6.2 - 6.2) + (438.6 + 438.6) * (6.2 - 223.2) + (438.6 + 197.6) * (223.2 - 223.2) + (197.6 + 197.6) * (223.2 - 385.7) + (197.6 + 191.6) * (385.7 - 385.7) + (191.6 + 191.6) * (385.7 - 391.7) + (191.6 + 1.5) * (391.7 - 391.7) + (1.5 + 1.5) * (391.7 - 6.2)) * 0.5 * 0.00694$
GARAGE (Non-living area)	423	$-((438.6 + 438.6) * (223.2 - 474) + (438.6 + 191.6) * (474 - 474) + (191.6 + 191.6) * (474 - 385.7) + (191.6 + 197.6) * (385.7 - 385.7) + (197.6 + 197.6) * (385.7 - 223.2) + (197.6 + 438.6) * (223.2 - 223.2)) * 0.5 * 0.00694$

1338 Hickory Point Drive, Lexington, Davidson County, North Carolina, United States, 27292

Gross Living Area: 2282 sq. ft

Level 2

2nd floor
[AREA: 1394]



Space	Area (sq. ft)	Calculation <small>Coordinate Polygon Area Algorithm using inches</small>
2nd floor (Living area)	1394	$-\left((1.5 + 438.6) * (6.2 - 6.2) + (438.6 + 438.6) * (6.2 - 474) + (438.6 + 191.6) * (474 - 474) + (191.6 + 191.6) * (474 - 454.7) + (191.6 + 1.5) * (454.7 - 454.7) + (1.5 + 1.5) * (454.7 - 6.2)\right) * 0.5 * 0.00694$