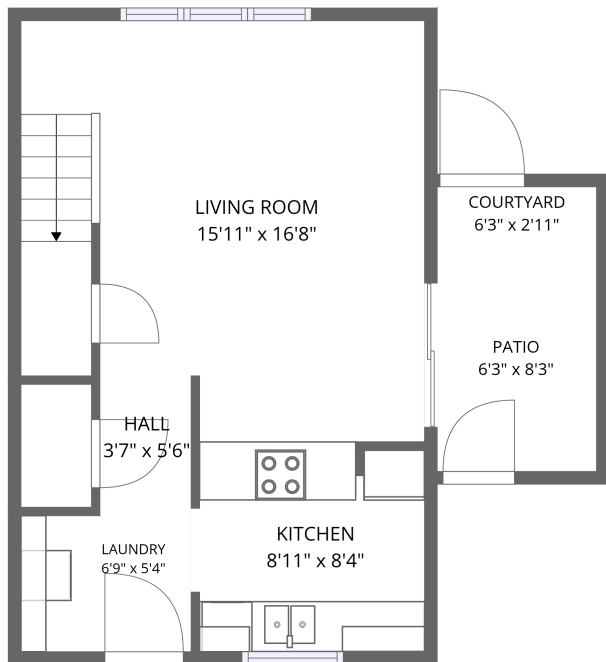
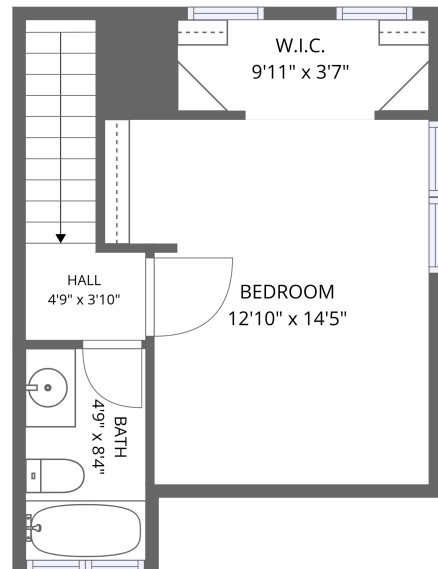


## Home data report

# 1201 Santa Ynez Ave,unit E,Los Osos,CA,US, unit E



1st floor



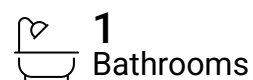
2nd floor

**Total Area: 704 sq. ft**

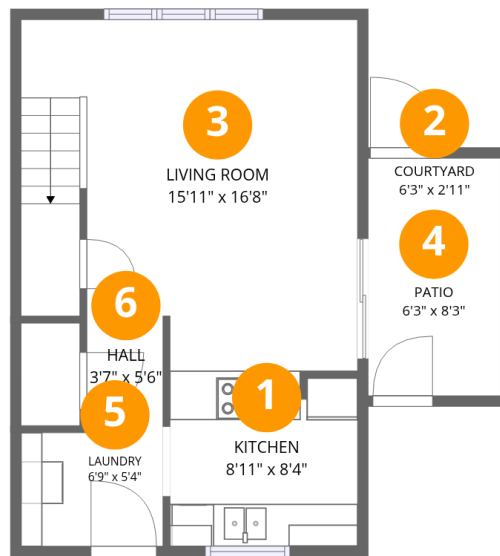
1st Floor: 397 sq. ft, 2nd Floor: 307 sq. ft

Excluded: Patio 52 sq. ft, Courtyard 19 sq. ft, Walls: 78 sq. ft

## Property summary



# 1201 Santa Ynez Ave,unit E,Los Osos,CA,US, unit E



## Room dimensions

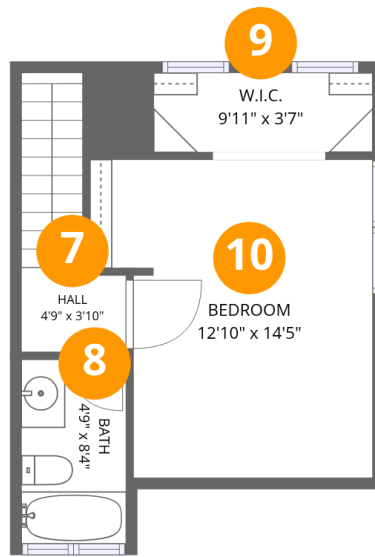
Floor 1

Total:397sqft Excluded: 71sqft

#		Dimensions	sqft	Counted as living area
1	Kitchen	8'11" x 8'4"	72 sq. ft	Yes
2	Courtyard	6'3" x 2'11"	19 sq. ft	No
3	Living Room	15'11" x 16'8"	245 sq. ft	Yes
4	Patio	6'3" x 8'3"	52 sq. ft	No
5	Laundry	6'9" x 5'4"	36 sq. ft	Yes
6	Hall	3'7" x 5'6"	20 sq. ft	Yes

# Home data report

## 1201 Santa Ynez Ave,unit E,Los Osos,CA,US, unit E



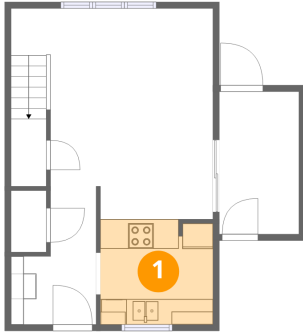
### Room dimensions

Floor 2

Total:307sqft Excluded: 0sqft

#		Dimensions	sqft	Counted as living area
7	Hall	4'9" x 3'10"	42 sq. ft	Yes
8	Bath	4'9" x 8'4"	40 sq. ft	Yes
9	W.I.C.	9'11" x 3'7"	36 sq. ft	Yes
10	Bedroom	12'10" x 14'5"	166 sq. ft	Yes

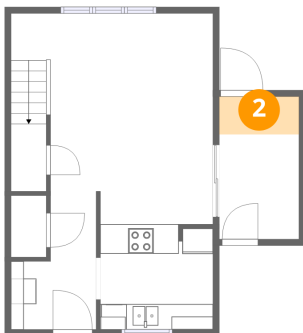
## 1 Floor 1 - Kitchen



Dimensions: 8'11" x 8'4"  
Area: 72 sq. ft  
Counted as living area: Yes

Heated: Yes  
Finished: Yes  
Enclosed: Yes  
Contiguous: Yes  
Permitted: Yes  
Wet space: No  
Addition: No  
Conversion: No

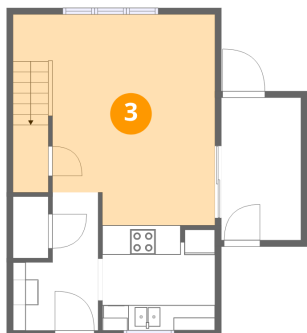
## 2 Floor 1 - Courtyard



Dimensions: 6'3" x 2'11"  
Area: 19 sq. ft  
Counted as living area: No

Heated: No  
Finished: No  
Enclosed: No  
Contiguous: Yes  
Permitted: No  
Wet space: No  
Addition: No  
Conversion: No

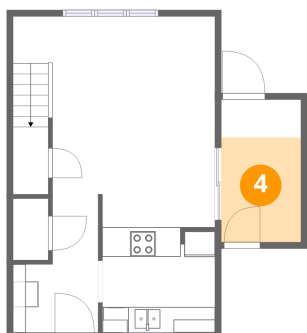
### 3 Floor 1 - Living Room



Dimensions: 15'11" x 16'8"  
Area: 245 sq. ft  
Counted as living area: Yes

Heated: Yes  
Finished: Yes  
Enclosed: Yes  
Contiguous: Yes  
Permitted: Yes  
Wet space: No  
Addition: No  
Conversion: No

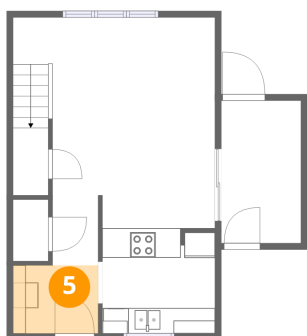
### 4 Floor 1 - Patio



Dimensions: 6'3" x 8'3"  
Area: 52 sq. ft  
Counted as living area: No

Heated: No  
Finished: No  
Enclosed: No  
Contiguous: Yes  
Permitted: Yes  
Wet space: No  
Addition: No  
Conversion: No

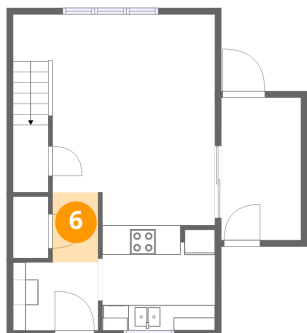
### 5 Floor 1 - Laundry



Dimensions: 6'9" x 5'4"  
Area: 36 sq. ft  
Counted as living area: Yes

Heated: Yes  
Finished: Yes  
Enclosed: Yes  
Contiguous: Yes  
Permitted: Yes  
Wet space: No  
Addition: No  
Conversion: No

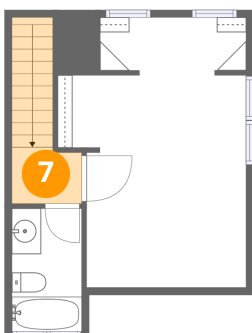
### 6 Floor 1 - Hall



Dimensions: 3'7" x 5'6"  
Area: 20 sq. ft  
Counted as living area: Yes

Heated: Yes  
Finished: Yes  
Enclosed: Yes  
Contiguous: Yes  
Permitted: Yes  
Wet space: No  
Addition: No  
Conversion: No

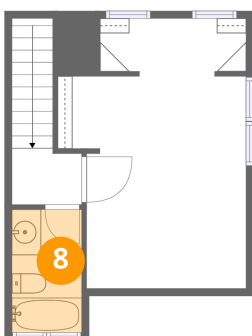
### 7 Floor 2 - Hall



Dimensions: 4'9" x 3'10"  
Area: 42 sq. ft  
Counted as living area: Yes

Heated: Yes  
Finished: Yes  
Enclosed: Yes  
Contiguous: Yes  
Permitted: Yes  
Wet space: No  
Addition: No  
Conversion: No

### 8 Floor 2 - Bath

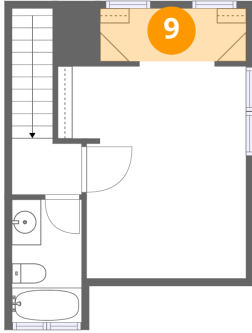


Dimensions: 4'9" x 8'4"  
Area: 40 sq. ft  
Counted as living area: Yes

Heated: Yes  
Finished: Yes  
Enclosed: Yes  
Contiguous: Yes  
Permitted: Yes  
Wet space: Yes  
Addition: No  
Conversion: No

**9** Floor 2 - W.I.C.

---

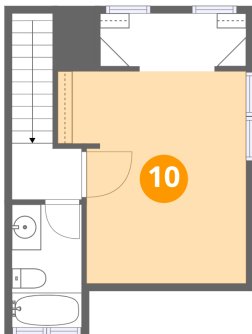


Dimensions: 9'11" x 3'7"  
Area: 36 sq. ft  
Counted as living area: Yes

Heated: Yes  
Finished: Yes  
Enclosed: Yes  
Contiguous: Yes  
Permitted: Yes  
Wet space: No  
Addition: No  
Conversion: No

**10** Floor 2 - Bedroom

---



Dimensions: 12'10" x 14'5"  
Area: 166 sq. ft  
Counted as living area: Yes

Heated: Yes  
Finished: Yes  
Enclosed: Yes  
Contiguous: Yes  
Permitted: Yes  
Wet space: No  
Addition: No  
Conversion: No