

Home data report

1700 Outlaw Street, Pahrump, Nye County, Nevada, United States, 89060



Total Area: 1734 sq. ft

1st Floor: 1734 sq. ft

Excluded: Porch 30 sq. ft, Covered patio 88 sq. ft, Garage 559 sq. ft, Walls: 136 sq. ft

Property summary

1 Floors

4 Bedrooms

2 Bathrooms

1 Garages

Home data report

1700 Outlaw Street, Pahrump, Nye County, Nevada, United States, 89060



Room dimensions

Floor 1 Total:1734sqft    Excluded: 677sqft

#		Dimensions	sqft	Counted as living area
1	Covered Patio	8'11" x 9'11"	88 sq. ft	No
2	Bedroom	12'9" x 10'8"	123 sq. ft	Yes
3	Primary Bedroom	13'6" x 15'11"	216 sq. ft	Yes
4	Garage	28'3" x 21'9"	559 sq. ft	No
5	Bath	9'6" x 5'3"	50 sq. ft	Yes
6	Bedroom	12'9" x 10'11"	128 sq. ft	Yes
7	Foyer	4'6" x 18'3"	77 sq. ft	Yes
8	Bath	5'9" x 3'9"	21 sq. ft	Yes
9	Living Room	15'0" x 15'11"	239 sq. ft	Yes
10	Hall	6'9" x 3'10"	26 sq. ft	Yes
11	Pantry	4'0" x 4'4"	13 sq. ft	Yes

## Home data report

**1700 Outlaw Street, Pahrump, Nye County, Nevada, United States, 89060**

#		Dimensions	sqft	Counted as living area
12	Hall	2'11" x 5'3"	15 sq. ft	Yes
13	Porch	4'0" x 7'4"	30 sq. ft	No
14	Kitchen	17'4" x 11'11"	191 sq. ft	Yes
15	Bedroom	13'4" x 11'10"	146 sq. ft	Yes
16	Bath	9'5" x 9'5"	72 sq. ft	Yes
17	Laundry	6'5" x 5'6"	35 sq. ft	Yes
18	W.I.C.	10'4" x 9'5"	90 sq. ft	Yes
19	Dining Area	17'4" x 13'6"	186 sq. ft	Yes

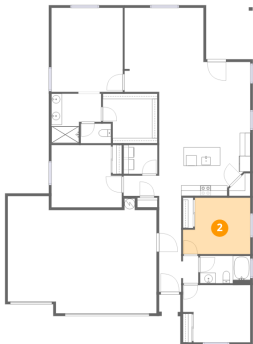
1 Floor 1 - Covered Patio



Dimensions: 8'11" x 9'11"  
Area: 88 sq. ft  
Counted as living area: No

Heated: No  
Finished: No  
Enclosed: No  
Contiguous: Yes  
Permitted: Yes  
Wet space: No  
Addition: No  
Conversion: No

2 Floor 1 - Bedroom



Dimensions: 12'9" x 10'8"  
Area: 123 sq. ft  
Counted as living area: Yes

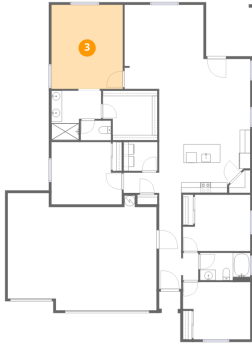
Heated: Yes  
Finished: Yes  
Enclosed: Yes  
Contiguous: Yes  
Permitted: Yes  
Wet space: No  
Addition: No  
Conversion: No

## Home data report

1700 Outlaw Street, Pahrump, Nye County, Nevada, United States, 89060

### 3 Floor 1 - Primary Bedroom

---



Dimensions: 13'6" x 15'11"  
Area: 216 sq. ft  
Counted as living area: Yes

Heated: Yes  
Finished: Yes  
Enclosed: Yes  
Contiguous: Yes  
Permitted: Yes  
Wet space: No  
Addition: No  
Conversion: No

### 4 Floor 1 - Garage

---

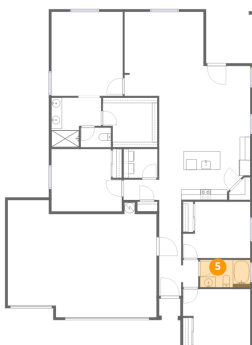


Dimensions: 28'3" x 21'9"  
Area: 559 sq. ft  
Counted as living area: No

Heated: No  
Finished: No  
Enclosed: Yes  
Contiguous: Yes  
Permitted: Yes  
Wet space: No  
Addition: No  
Conversion: No

### 5 Floor 1 - Bath

---

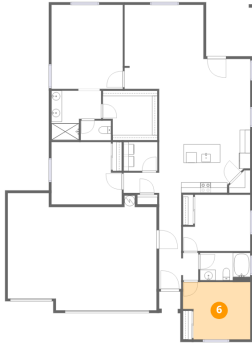


Dimensions: 9'6" x 5'3"  
Area: 50 sq. ft  
Counted as living area: Yes

Heated: Yes  
Finished: Yes  
Enclosed: Yes  
Contiguous: Yes  
Permitted: Yes  
Wet space: Yes  
Addition: No  
Conversion: No

1700 Outlaw Street, Pahrump, Nye County, Nevada, United States, 89060

## 6 Floor 1 - Bedroom



Dimensions: 12'9" x 10'11"  
Area: 128 sq. ft  
Counted as living area: Yes

Heated: Yes  
Finished: Yes  
Enclosed: Yes  
Contiguous: Yes  
Permitted: Yes  
Wet space: No  
Addition: No  
Conversion: No

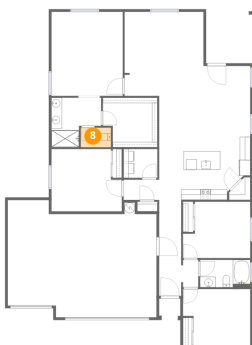
## 7 Floor 1 - Foyer



Dimensions: 4'6" x 18'3"  
Area: 77 sq. ft  
Counted as living area: Yes

Heated: Yes  
Finished: Yes  
Enclosed: Yes  
Contiguous: Yes  
Permitted: Yes  
Wet space: No  
Addition: No  
Conversion: No

## 8 Floor 1 - Bath

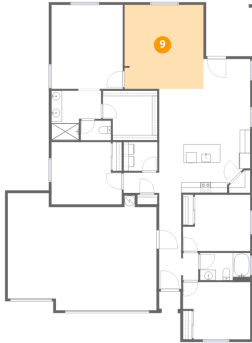


Dimensions: 5'9" x 3'9"  
Area: 21 sq. ft  
Counted as living area: Yes

Heated: Yes  
Finished: Yes  
Enclosed: Yes  
Contiguous: Yes  
Permitted: Yes  
Wet space: Yes  
Addition: No  
Conversion: No

1700 Outlaw Street, Pahrump, Nye County, Nevada, United States, 89060

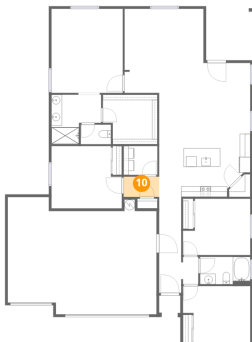
## 9 Floor 1 - Living Room



Dimensions: 15'0" x 15'11"  
Area: 239 sq. ft  
Counted as living area: Yes

Heated: Yes  
Finished: Yes  
Enclosed: Yes  
Contiguous: Yes  
Permitted: Yes  
Wet space: No  
Addition: No  
Conversion: No

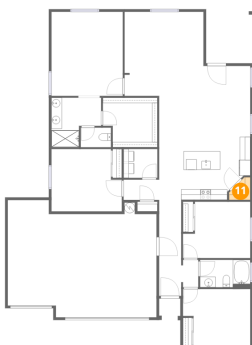
## 10 Floor 1 - Hall



Dimensions: 6'9" x 3'10"  
Area: 26 sq. ft  
Counted as living area: Yes

Heated: Yes  
Finished: Yes  
Enclosed: Yes  
Contiguous: Yes  
Permitted: Yes  
Wet space: No  
Addition: No  
Conversion: No

## 11 Floor 1 - Pantry

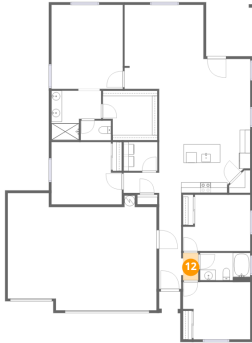


Dimensions: 4'0" x 4'4"  
Area: 13 sq. ft  
Counted as living area: Yes

Heated: Yes  
Finished: Yes  
Enclosed: Yes  
Contiguous: Yes  
Permitted: Yes  
Wet space: No  
Addition: No  
Conversion: No

1700 Outlaw Street, Pahrump, Nye County, Nevada, United States, 89060

## 12 Floor 1 - Hall



Dimensions: 2'11" x 5'3"  
Area: 15 sq. ft  
Counted as living area: Yes

Heated: Yes  
Finished: Yes  
Enclosed: Yes  
Contiguous: Yes  
Permitted: Yes  
Wet space: No  
Addition: No  
Conversion: No

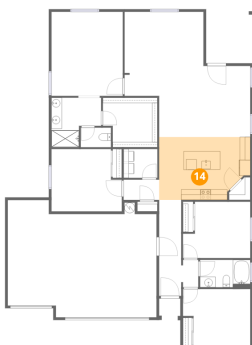
## 13 Floor 1 - Porch



Dimensions: 4'0" x 7'4"  
Area: 30 sq. ft  
Counted as living area: No

Heated: No  
Finished: No  
Enclosed: No  
Contiguous: Yes  
Permitted: Yes  
Wet space: No  
Addition: No  
Conversion: No

## 14 Floor 1 - Kitchen



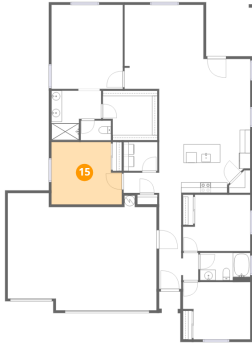
Dimensions: 17'4" x 11'11"  
Area: 191 sq. ft  
Counted as living area: Yes

Heated: Yes  
Finished: Yes  
Enclosed: Yes  
Contiguous: Yes  
Permitted: Yes  
Wet space: No  
Addition: No  
Conversion: No



1700 Outlaw Street, Pahrump, Nye County, Nevada, United States, 89060

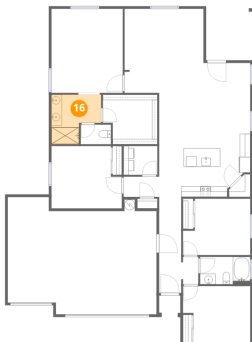
## 15 Floor 1 - Bedroom



Dimensions: 13'4" x 11'10"  
Area: 146 sq. ft  
Counted as living area: Yes

Heated: Yes  
Finished: Yes  
Enclosed: Yes  
Contiguous: Yes  
Permitted: Yes  
Wet space: No  
Addition: No  
Conversion: No

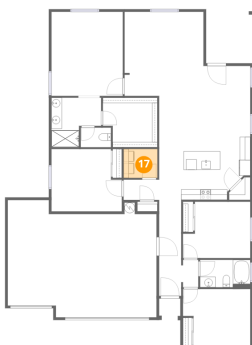
## 16 Floor 1 - Bath



Dimensions: 9'5" x 9'5"  
Area: 72 sq. ft  
Counted as living area: Yes

Heated: Yes  
Finished: Yes  
Enclosed: Yes  
Contiguous: Yes  
Permitted: Yes  
Wet space: Yes  
Addition: No  
Conversion: No

## 17 Floor 1 - Laundry



Dimensions: 6'5" x 5'6"  
Area: 35 sq. ft  
Counted as living area: Yes

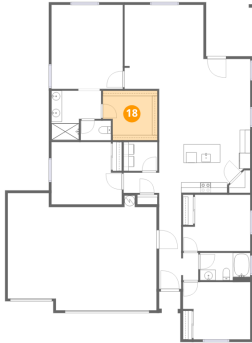
Heated: Yes  
Finished: Yes  
Enclosed: Yes  
Contiguous: Yes  
Permitted: Yes  
Wet space: No  
Addition: No  
Conversion: No

Home data report

1700 Outlaw Street, Pahrump, Nye County, Nevada, United States, 89060

**18** Floor 1 - W.I.C.

---



Dimensions: 10'4" x 9'5"  
Area: 90 sq. ft  
Counted as living area: Yes

Heated: Yes  
Finished: Yes  
Enclosed: Yes  
Contiguous: Yes  
Permitted: Yes  
Wet space: No  
Addition: No  
Conversion: No

**19** Floor 1 - Dining Area

---



Dimensions: 17'4" x 13'6"  
Area: 186 sq. ft  
Counted as living area: Yes

Heated: Yes  
Finished: Yes  
Enclosed: Yes  
Contiguous: Yes  
Permitted: Yes  
Wet space: No  
Addition: No  
Conversion: No