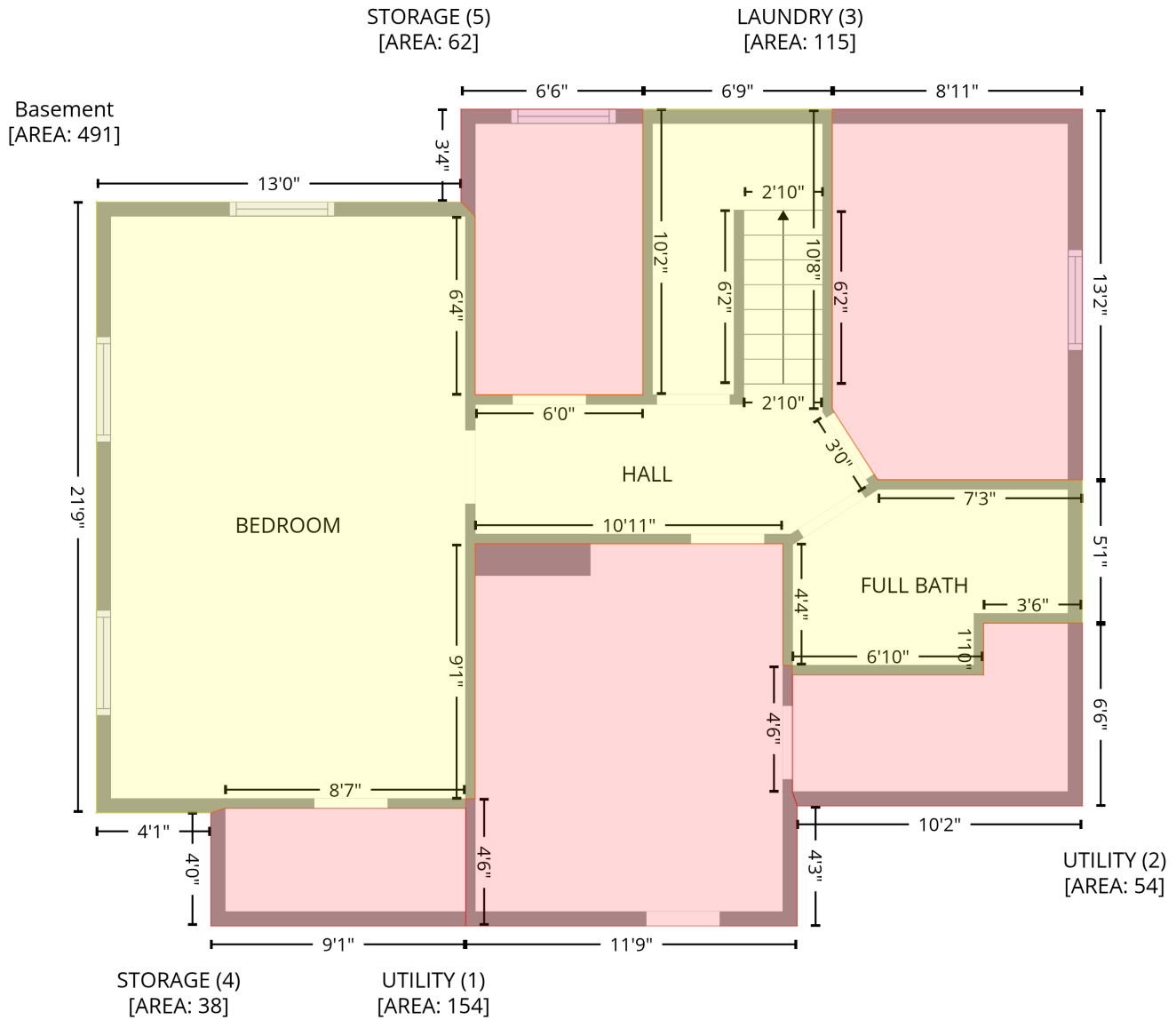


96 N 100 W, Preston, ID, US

Gross Living Area: 1589 sq. ft

Level 1 - Below Grade



Space	Area (sq. ft)	Calculation <small>Coordinate Polygon Area Algorithm using inches</small>
Basement (Living area)	491	$ \begin{aligned} & -((230 + 310.8) * (6.5 - 6.5) + (310.8 + 310.8) * (6.5 - 134.3) + (310.8 + 330.1) * (134.3 - 164.5) + \\ & (330.1 + 417.4) * (164.5 - 164.5) + (417.4 + 417.4) * (164.5 - 225.6) + (417.4 + 375.3) * (225.6 - \\ & 225.6) + (375.3 + 375.3) * (225.6 - 247.6) + (375.3 + 293.8) * (247.6 - 247.6) + (293.8 + 293.8) * \\ & (247.6 - 243.6) + (293.8 + 289.8) * (243.6 - 243.6) + (289.8 + 289.8) * (243.6 - 191.7) + (289.8 + \\ & 158.4) * (191.7 - 191.7) + (158.4 + 158.4) * (191.7 - 300.5) + (158.4 + 154.4) * (300.5 - 300.5) + \\ & (154.4 + 154.4) * (300.5 - 304.5) + (154.4 + 51.7) * (304.5 - 304.5) + (51.7 + 45.7) * (304.5 - \\ & 306.5) + (45.7 + -3.1) * (306.5 - 306.5) + (-3.1 + -3.1) * (306.5 - 46) + (-3.1 + 152.4) * (46 - 46) + \\ & (152.4 + 158.4) * (46 - 52) + (158.4 + 158.4) * (52 - 128.3) + (158.4 + 230) * (128.3 - 128.3) + \\ & (230 + 230) * (128.3 - 6.5) * 0.5 * 0.00694 \end{aligned} $

96 N 100 W, Preston, ID, US

Gross Living Area: 1589 sq. ft

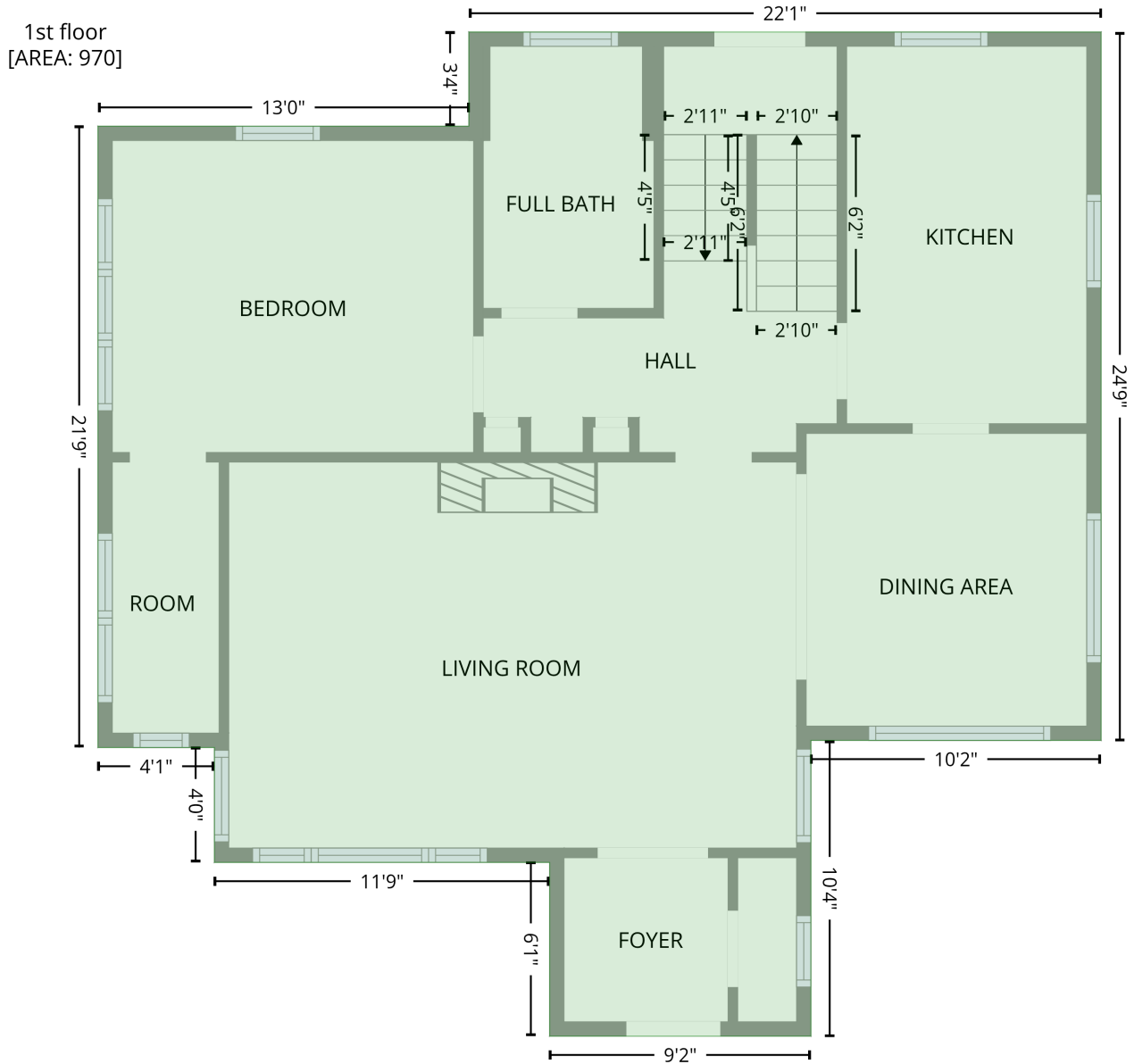
Level 1 - Below Grade

Space	Area (sq. ft)	Calculation <small>Coordinate Polygon Area Algorithm using inches</small>
UTILITY (Non-living area)	154	$-\left((289.8 + 289.8) * (191.7 - 243.6) + (289.8 + 293.8) * (243.6 - 243.6) + (293.8 + 293.8) * (243.6 - 297.5) + (293.8 + 295.8) * (297.5 - 303.5) + (295.8 + 295.8) * (303.5 - 354.7) + (295.8 + 154.4) * (354.7 - 354.7) + (154.4 + 154.4) * (354.7 - 300.5) + (154.4 + 158.4) * (300.5 - 300.5) + (158.4 + 158.4) * (300.5 - 191.7) + (158.4 + 289.8) * (191.7 - 191.7)\right) * 0.5 * 0.00694$
UTILITY (Non-living area)	54	$-\left((417.4 + 417.4) * (225.6 - 303.5) + (417.4 + 295.8) * (303.5 - 303.5) + (295.8 + 293.8) * (303.5 - 297.5) + (293.8 + 293.8) * (297.5 - 247.6) + (293.8 + 375.3) * (247.6 - 247.6) + (375.3 + 375.3) * (247.6 - 225.6) + (375.3 + 417.4) * (225.6 - 225.6)\right) * 0.5 * 0.00694$
LAUNDRY (Non-living area)	115	$-\left((310.8 + 417.4) * (6.5 - 6.5) + (417.4 + 417.4) * (6.5 - 164.5) + (417.4 + 330.1) * (164.5 - 164.5) + (330.1 + 310.8) * (164.5 - 134.3) + (310.8 + 310.8) * (134.3 - 6.5)\right) * 0.5 * 0.00694$
STORAGE (Non-living area)	38	$-\left((154.4 + 154.4) * (304.5 - 354.7) + (154.4 + 45.7) * (354.7 - 354.7) + (45.7 + 45.7) * (354.7 - 306.5) + (45.7 + 51.7) * (306.5 - 304.5) + (51.7 + 154.4) * (304.5 - 304.5)\right) * 0.5 * 0.00694$
STORAGE (Non-living area)	62	$-\left((152.4 + 230) * (6.5 - 6.5) + (230 + 230) * (6.5 - 128.3) + (230 + 158.4) * (128.3 - 128.3) + (158.4 + 158.4) * (128.3 - 52) + (158.4 + 152.4) * (52 - 46) + (152.4 + 152.4) * (46 - 6.5)\right) * 0.5 * 0.00694$

96 N 100 W, Preston, ID, US

Gross Living Area: 1589 sq. ft

Level 2

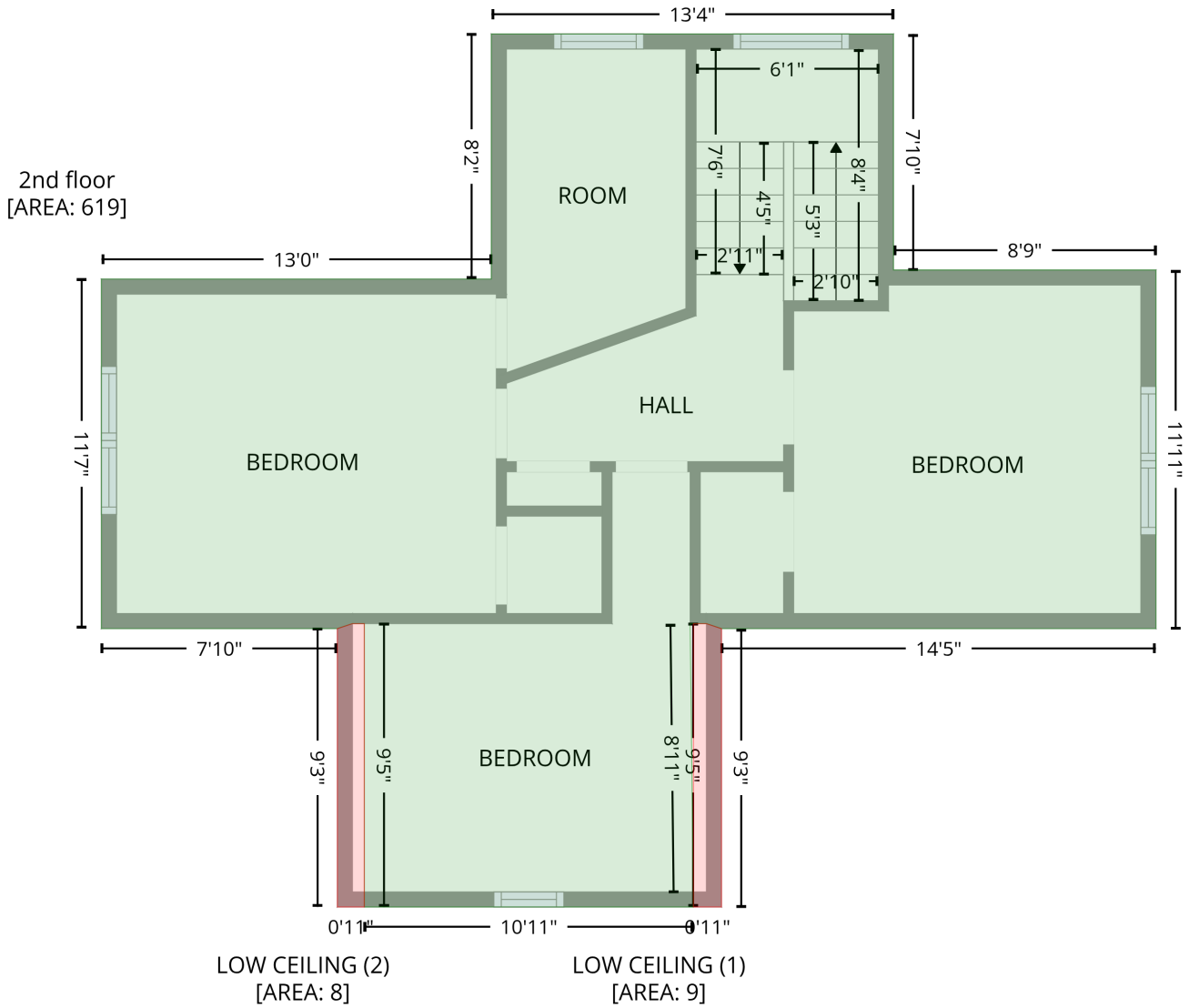


Space	Area (sq. ft)	Calculation <small>Coordinate Polygon Area Algorithm using inches</small>
1st floor (Living area)	970	$ \begin{aligned} & -((152.4 + 417.4) * (6.5 - 6.5) + (417.4 + 417.4) * (6.5 - 303.5) + (417.4 + 295.8) * (303.5 - 303.5) \\ & + (295.8 + 295.8) * (303.5 - 427.6) + (295.8 + 186.2) * (427.6 - 427.6) + (186.2 + 186.2) * (427.6 - \\ & 354.7) + (186.2 + 45.7) * (354.7 - 354.7) + (45.7 + 45.7) * (354.7 - 306.5) + (45.7 + -3.1) * (306.5 - \\ & 306.5) + (-3.1 + -3.1) * (306.5 - 46) + (-3.1 + 152.4) * (46 - 46) + (152.4 + 152.4) * (46 - 6.5)) * 0.5 \\ & * 0.00694 \end{aligned} $

96 N 100 W, Preston, ID, US

Gross Living Area: 1589 sq. ft

Level 3



Space	Area (sq. ft)	Calculation <small>Coordinate Polygon Area Algorithm using inches</small>
2nd floor (Living area)	619	$-\left((312.8 + 312.8) * (6.5 - 100.6) + (312.8 + 417.4) * (100.6 - 100.6) + (417.4 + 417.4) * (100.6 - 243.7) + (417.4 + 244.2) * (243.7 - 243.7) + (244.2 + 238.2) * (243.7 - 241.7) + (238.2 + 231.7) * (241.7 - 241.7) + (231.7 + 233) * (241.7 - 348.7) + (233 + 233) * (348.7 - 354.7) + (233 + 101.7) * (354.7 - 354.7) + (101.7 + 101.7) * (354.7 - 241.7) + (101.7 + 97) * (241.7 - 241.7) + (97 + 91) * (241.7 - 243.7) + (91 + -3.1) * (243.7 - 243.7) + (-3.1 + -3.1) * (243.7 - 104.2) + (-3.1 + 152.4) * (104.2 - 104.2) + (152.4 + 152.4) * (104.2 - 6.5) + (152.4 + 312.8) * (6.5 - 6.5)\right) * 0.5 * 0.00694$
LOW CEILING (Non-living area)	9	$-\left((238.2 + 244.2) * (241.7 - 243.7) + (244.2 + 244.2) * (243.7 - 354.7) + (244.2 + 233) * (354.7 - 354.7) + (233 + 233) * (354.7 - 241.7) + (233 + 238.2) * (241.7 - 241.7)\right) * 0.5 * 0.00694$
LOW CEILING (Non-living area)	8	$-\left((101.7 + 101.7) * (241.7 - 354.7) + (101.7 + 91) * (354.7 - 354.7) + (91 + 91) * (354.7 - 243.7) + (91 + 97) * (243.7 - 241.7) + (97 + 101.7) * (241.7 - 241.7)\right) * 0.5 * 0.00694$