

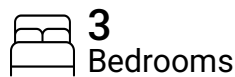


Total Area: 3297 sq. ft

1st Floor: 1228 sq. ft, 2nd Floor: 2069 sq. ft

Excluded: Storage 795 sq. ft, Garage 677 sq. ft, Porch 299 sq. ft, Balcony 313 sq. ft, Open to below 9 sq. ft, Walls: 248 sq. ft

Property summary

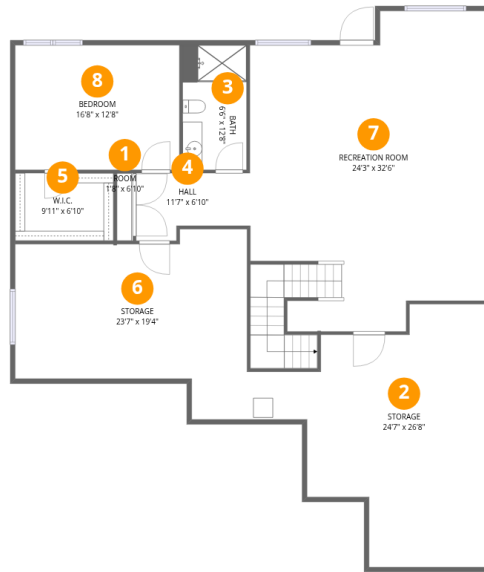


Home data report

375 Casalon Pl, Superior, CO, United States

 **1**
Half baths

 **1**
Garages



Room dimensions

Floor 1

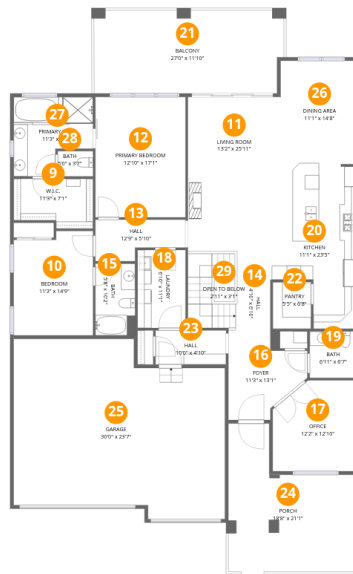
Total: 1228 sqft

Excluded: 795 sqft

#		Dimensions	sqft	Counted as living area
1	Room	1'8" x 6'10"	11 sq. ft	Yes
2	Storage	24'7" x 26'8"	656 sq. ft	No
3	Bath	6'6" x 12'8"	82 sq. ft	Yes
4	Hall	11'7" x 6'10"	80 sq. ft	Yes
5	W.I.C.	9'11" x 6'10"	68 sq. ft	Yes
6	Storage	23'7" x 19'4"	455 sq. ft	No
7	Recreation Room	24'3" x 32'6"	788 sq. ft	Yes
8	Bedroom	16'8" x 12'8"	211 sq. ft	Yes

Home data report

375 Casalon Pl, Superior, CO, United States



Room dimensions

Floor 2

Total: 2069 sqft

Excluded: 1298 sqft

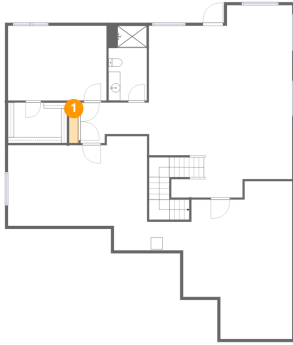
#		Dimensions	sqft	Counted as living area
9	W.I.C.	11'3" x 7'1"	80 sq. ft	Yes
10	Bedroom	11'3" x 14'9"	167 sq. ft	Yes
11	Living Room	13'2" x 25'11"	342 sq. ft	Yes
12	Primary Bedroom	12'10" x 17'1"	219 sq. ft	Yes
13	Hall	12'9" x 5'10"	75 sq. ft	Yes
14	Hall	4'10" x 6'10"	33 sq. ft	Yes
15	Bath	5'8" x 10'2"	57 sq. ft	Yes
16	Foyer	11'3" x 13'1"	146 sq. ft	Yes
17	Office	12'2" x 12'10"	156 sq. ft	Yes
18	Laundry	6'10" x 11'1"	76 sq. ft	Yes
19	Bath	6'11" x 6'7"	46 sq. ft	Yes

Home data report

375 Casalon Pl, Superior, CO, United States

#		Dimensions	sqft	Counted as living area
20	Kitchen	11'1" x 23'5"	258 sq. ft	Yes
21	Balcony	27'0" x 11'10"	318 sq. ft	No
22	Pantry	5'5" x 6'8"	36 sq. ft	Yes
23	Hall	10'0" x 4'10"	48 sq. ft	Yes
24	Porch	18'8" x 21'1"	392 sq. ft	No
25	Garage	30'0" x 23'7"	709 sq. ft	No
26	Dining Area	11'1" x 14'8"	162 sq. ft	Yes
27	Primary Bath	11'3" x 11'3"	127 sq. ft	Yes
28	Bath	5'0" x 3'7"	18 sq. ft	Yes
29	Open To Below	2'11" x 3'1"	9 sq. ft	No

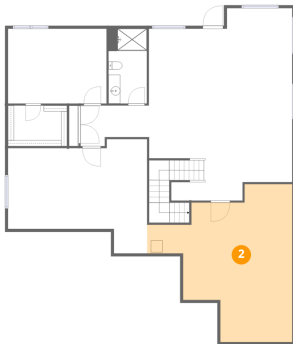
1 Floor 1 - Room



Dimensions: 1'8" x 6'10"
Area: 11 sq. ft
Counted as living area: Yes

Heated: Yes
Finished: Yes
Enclosed: Yes
Contiguous: Yes
Permitted: Yes
Wet space: No
Addition: No
Conversion: No

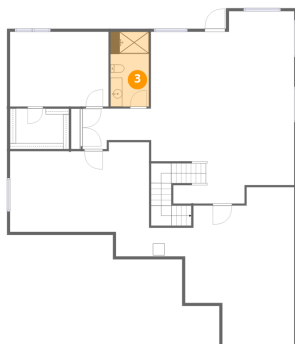
2 Floor 1 - Storage



Dimensions: 24'7" x 26'8"
Area: 656 sq. ft
Counted as living area: No

Heated: No
Finished: No
Enclosed: No
Contiguous: Yes
Permitted: Yes
Wet space: No
Addition: No
Conversion: No

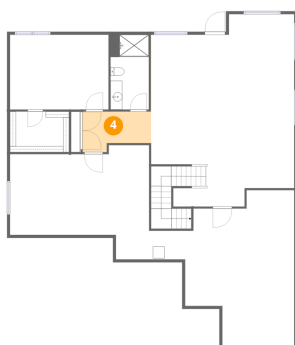
3 Floor 1 - Bath



Dimensions: 6'6" x 12'8"
Area: 82 sq. ft
Counted as living area: Yes

Heated: Yes
Finished: Yes
Enclosed: Yes
Contiguous: Yes
Permitted: Yes
Wet space: Yes
Addition: No
Conversion: No

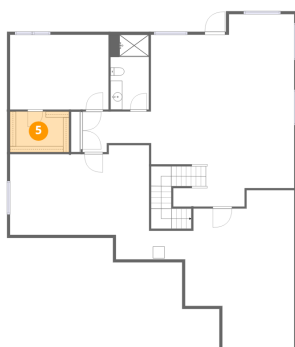
4 Floor 1 - Hall



Dimensions: 11'7" x 6'10"
Area: 80 sq. ft
Counted as living area: Yes

Heated: Yes
Finished: Yes
Enclosed: Yes
Contiguous: Yes
Permitted: Yes
Wet space: No
Addition: No
Conversion: No

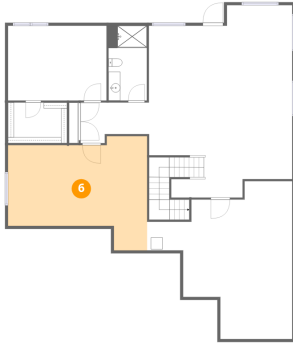
5 Floor 1 - W.I.C.



Dimensions: 9'11" x 6'10"
Area: 68 sq. ft
Counted as living area: Yes

Heated: Yes
Finished: Yes
Enclosed: Yes
Contiguous: Yes
Permitted: Yes
Wet space: No
Addition: No
Conversion: No

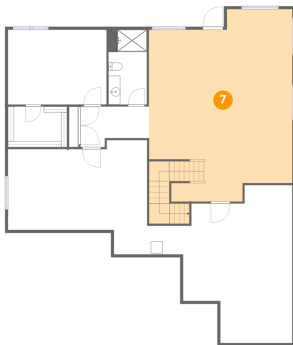
6 Floor 1 - Storage



Dimensions: 23'7" x 19'4"
Area: 455 sq. ft
Counted as living area: No

Heated: No
Finished: No
Enclosed: No
Contiguous: Yes
Permitted: Yes
Wet space: No
Addition: No
Conversion: No

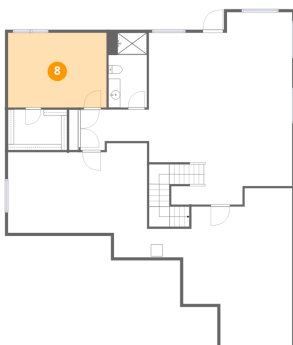
7 Floor 1 - Recreation Room



Dimensions: 24'3" x 32'6"
Area: 788 sq. ft
Counted as living area: Yes

Heated: Yes
Finished: Yes
Enclosed: Yes
Contiguous: Yes
Permitted: Yes
Wet space: No
Addition: No
Conversion: No

8 Floor 1 - Bedroom



Dimensions: 16'8" x 12'8"
Area: 211 sq. ft
Counted as living area: Yes

Heated: Yes
Finished: Yes
Enclosed: Yes
Contiguous: Yes
Permitted: Yes
Wet space: No
Addition: No
Conversion: No

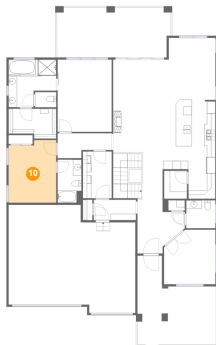
9 Floor 2 - W.I.C.



Dimensions: 11'3" x 7'1"
Area: 80 sq. ft
Counted as living area: Yes

Heated: Yes
Finished: Yes
Enclosed: Yes
Contiguous: Yes
Permitted: Yes
Wet space: No
Addition: No
Conversion: No

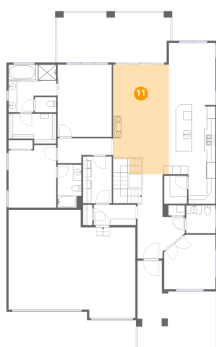
10 Floor 2 - Bedroom



Dimensions: 11'3" x 14'9"
Area: 167 sq. ft
Counted as living area: Yes

Heated: Yes
Finished: Yes
Enclosed: Yes
Contiguous: Yes
Permitted: Yes
Wet space: No
Addition: No
Conversion: No

11 Floor 2 - Living Room



Dimensions: 13'2" x 25'11"
Area: 342 sq. ft
Counted as living area: Yes

Heated: Yes
Finished: Yes
Enclosed: Yes
Contiguous: Yes
Permitted: Yes
Wet space: No
Addition: No
Conversion: No

12 Floor 2 - Primary Bedroom



Dimensions: 12'10" x 17'1"
Area: 219 sq. ft
Counted as living area: Yes

Heated: Yes
Finished: Yes
Enclosed: Yes
Contiguous: Yes
Permitted: Yes
Wet space: No
Addition: No
Conversion: No

13 Floor 2 - Hall



Dimensions: 12'9" x 5'10"
Area: 75 sq. ft
Counted as living area: Yes

Heated: Yes
Finished: Yes
Enclosed: Yes
Contiguous: Yes
Permitted: Yes
Wet space: No
Addition: No
Conversion: No

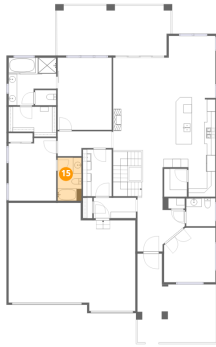
14 Floor 2 - Hall



Dimensions: 4'10" x 6'10"
Area: 33 sq. ft
Counted as living area: Yes

Heated: Yes
Finished: Yes
Enclosed: Yes
Contiguous: Yes
Permitted: Yes
Wet space: No
Addition: No
Conversion: No

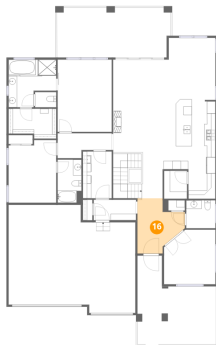
15 Floor 2 - Bath



Dimensions: 5'8" x 10'2"
Area: 57 sq. ft
Counted as living area: Yes

Heated: Yes
Finished: Yes
Enclosed: Yes
Contiguous: Yes
Permitted: Yes
Wet space: Yes
Addition: No
Conversion: No

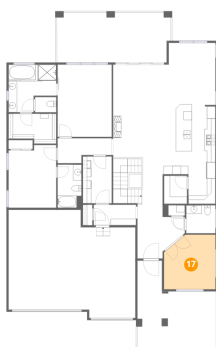
16 Floor 2 - Foyer



Dimensions: 11'3" x 13'1"
Area: 146 sq. ft
Counted as living area: Yes

Heated: Yes
Finished: Yes
Enclosed: Yes
Contiguous: Yes
Permitted: Yes
Wet space: No
Addition: No
Conversion: No

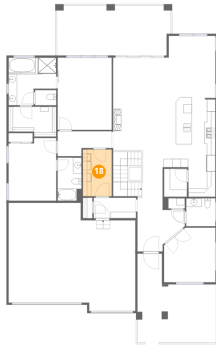
17 Floor 2 - Office



Dimensions: 12'2" x 12'10"
Area: 156 sq. ft
Counted as living area: Yes

Heated: Yes
Finished: Yes
Enclosed: Yes
Contiguous: Yes
Permitted: Yes
Wet space: No
Addition: No
Conversion: No

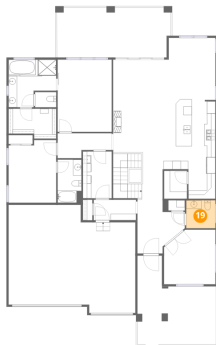
18 Floor 2 - Laundry



Dimensions: 6'10" x 11'1"
Area: 76 sq. ft
Counted as living area: Yes

Heated: Yes
Finished: Yes
Enclosed: Yes
Contiguous: Yes
Permitted: Yes
Wet space: No
Addition: No
Conversion: No

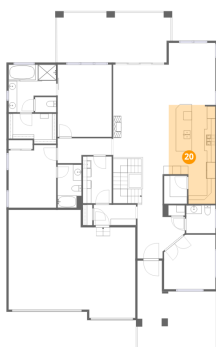
19 Floor 2 - Bath



Dimensions: 6'11" x 6'7"
Area: 46 sq. ft
Counted as living area: Yes

Heated: Yes
Finished: Yes
Enclosed: Yes
Contiguous: Yes
Permitted: Yes
Wet space: Yes
Addition: No
Conversion: No

20 Floor 2 - Kitchen



Dimensions: 11'1" x 23'5"
Area: 258 sq. ft
Counted as living area: Yes

Heated: Yes
Finished: Yes
Enclosed: Yes
Contiguous: Yes
Permitted: Yes
Wet space: No
Addition: No
Conversion: No

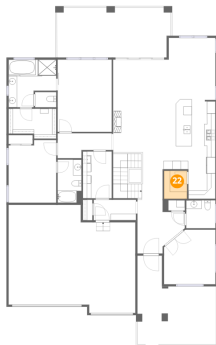
21 Floor 2 - Balcony



Dimensions: 27'0" x 11'10"
Area: 318 sq. ft
Counted as living area: No

Heated: No
Finished: No
Enclosed: No
Contiguous: Yes
Permitted: Yes
Wet space: No
Addition: No
Conversion: No

22 Floor 2 - Pantry



Dimensions: 5'5" x 6'8"
Area: 36 sq. ft
Counted as living area: Yes

Heated: Yes
Finished: Yes
Enclosed: Yes
Contiguous: Yes
Permitted: Yes
Wet space: No
Addition: No
Conversion: No

23 Floor 2 - Hall



Dimensions: 10'0" x 4'10"
Area: 48 sq. ft
Counted as living area: Yes

Heated: Yes
Finished: Yes
Enclosed: Yes
Contiguous: Yes
Permitted: Yes
Wet space: No
Addition: No
Conversion: No

24 Floor 2 - Porch



Dimensions: 18'8" x 21'1"
Area: 392 sq. ft
Counted as living area: No

Heated: No
Finished: No
Enclosed: No
Contiguous: Yes
Permitted: Yes
Wet space: No
Addition: No
Conversion: No

25 Floor 2 - Garage



Dimensions: 30'0" x 23'7"
Area: 709 sq. ft
Counted as living area: No

Heated: No
Finished: No
Enclosed: Yes
Contiguous: Yes
Permitted: Yes
Wet space: No
Addition: No
Conversion: No

26 Floor 2 - Dining Area



Dimensions: 11'1" x 14'8"
Area: 162 sq. ft
Counted as living area: Yes

Heated: Yes
Finished: Yes
Enclosed: Yes
Contiguous: Yes
Permitted: Yes
Wet space: No
Addition: No
Conversion: No

27 Floor 2 - Primary Bath



Dimensions: 11'3" x 11'3"
Area: 127 sq. ft
Counted as living area: Yes

Heated: Yes
Finished: Yes
Enclosed: Yes
Contiguous: Yes
Permitted: Yes
Wet space: Yes
Addition: No
Conversion: No

28 Floor 2 - Bath



Dimensions: 5'0" x 3'7"
Area: 18 sq. ft
Counted as living area: Yes

Heated: Yes
Finished: Yes
Enclosed: Yes
Contiguous: Yes
Permitted: Yes
Wet space: Yes
Addition: No
Conversion: No

29 Floor 2 - Open To Below



Dimensions: 2'11" x 3'1"
Area: 9 sq. ft
Counted as living area: No

Heated: No
Finished: No
Enclosed: No
Contiguous: Yes
Permitted: No
Wet space: No
Addition: No
Conversion: No