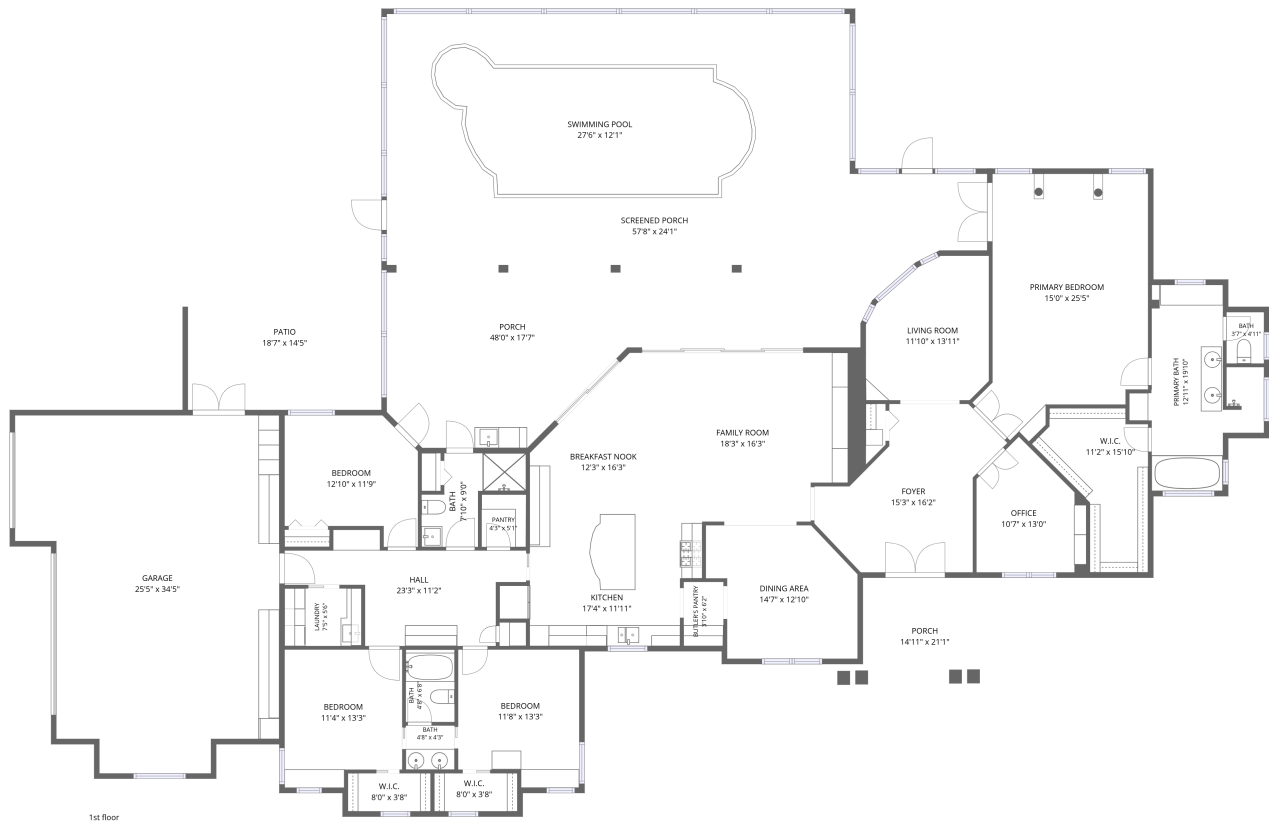


Home data report

**19617 Eagle Crest Drive, Lutz, Hillsborough County, Florida,
United States, 33549**



Total Area: 3634 sq. ft

1st Floor: 3634 sq. ft

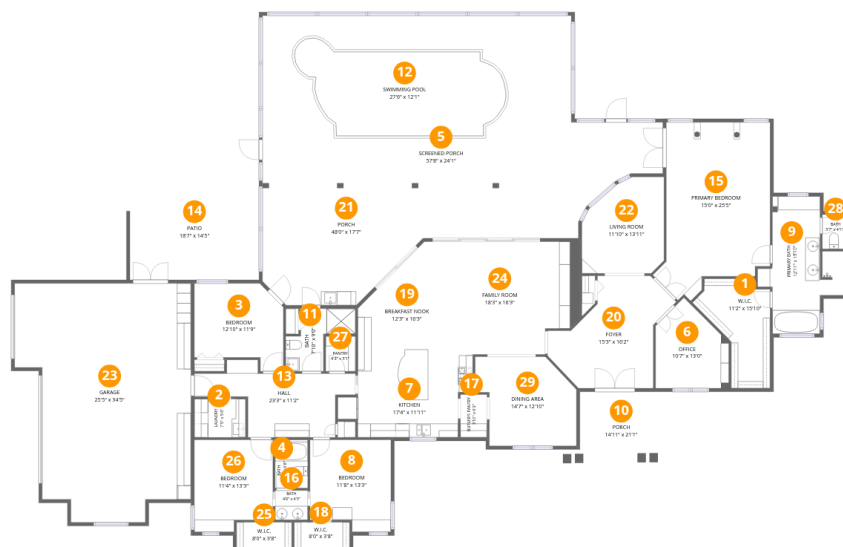
Excluded: Porch 813 sq. ft, Screened porch 859 sq. ft, Patio 268 sq. ft, Walls: 261 sq. ft

Property summary



Home data report

19617 Eagle Crest Drive, Lutz, Hillsborough County, Florida, United States, 33549



Room dimensions

Floor 1

Total:3634sqft

Excluded: 1940sqft

#		Dimensions	sqft	Counted as living area
1	W.I.C.	11'2" x 15'10"	116 sq. ft	Yes
2	Laundry	7'5" x 5'6"	41 sq. ft	Yes
3	Bedroom	12'10" x 11'9"	137 sq. ft	Yes
4	Bath	4'8" x 6'8"	33 sq. ft	Yes
5	Screened Porch	57'8" x 24'1"	1180 sq. ft	No
6	Office	10'7" x 13'0"	109 sq. ft	Yes
7	Kitchen	17'4" x 11'11"	193 sq. ft	Yes
8	Bedroom	11'8" x 13'3"	144 sq. ft	Yes
9	Primary Bath	12'11" x 19'10"	165 sq. ft	Yes
10	Porch	14'11" x 21'1"	270 sq. ft	No
11	Bath	7'10" x 9'0"	57 sq. ft	Yes

Home data report

**19617 Eagle Crest Drive, Lutz, Hillsborough County, Florida,
United States, 33549**

#		Dimensions	sqft	Counted as living area
12	Swimming Pool	27'6" x 12'1"	321 sq. ft	No
13	Hall	23'3" x 11'2"	159 sq. ft	Yes
14	Patio	18'7" x 14'5"	268 sq. ft	No
15	Primary Bedroom	15'0" x 25'5"	347 sq. ft	Yes
16	Bath	4'8" x 4'3"	20 sq. ft	Yes
17	Butler's Pantry	3'10" x 6'2"	24 sq. ft	Yes
18	W.I.C.	8'0" x 3'8"	29 sq. ft	Yes
19	Breakfast Nook	12'3" x 16'3"	153 sq. ft	Yes
20	Foyer	15'3" x 16'2"	198 sq. ft	Yes
21	Porch	48'0" x 17'7"	543 sq. ft	No
22	Living Room	11'10" x 13'11"	144 sq. ft	Yes
23	Garage	25'5" x 34'5"	749 sq. ft	Yes
24	Family Room	18'3" x 16'3"	300 sq. ft	Yes
25	W.I.C.	8'0" x 3'8"	29 sq. ft	Yes
26	Bedroom	11'4" x 13'3"	140 sq. ft	Yes
27	Pantry	4'3" x 5'1"	22 sq. ft	Yes
28	Bath	3'7" x 4'11"	18 sq. ft	Yes
29	Dining Area	14'7" x 12'10"	161 sq. ft	Yes

19617 Eagle Crest Drive, Lutz, Hillsborough County, Florida,
United States, 33549

1 Floor 1 - W.I.C.



Dimensions: 11'2" x 15'10"
Area: 116 sq. ft
Counted as living area: Yes

Heated: Yes
Finished: Yes
Enclosed: Yes
Contiguous: Yes
Permitted: Yes
Wet space: No
Addition: No
Conversion: No

2 Floor 1 - Laundry



Dimensions: 7'5" x 5'6"
Area: 41 sq. ft
Counted as living area: Yes

Heated: Yes
Finished: Yes
Enclosed: Yes
Contiguous: Yes
Permitted: Yes
Wet space: No
Addition: No
Conversion: No

19617 Eagle Crest Drive, Lutz, Hillsborough County, Florida,
United States, 33549

3 Floor 1 - Bedroom



Dimensions: 12'10" x 11'9"
Area: 137 sq. ft
Counted as living area: Yes

Heated: Yes
Finished: Yes
Enclosed: Yes
Contiguous: Yes
Permitted: Yes
Wet space: No
Addition: No
Conversion: No

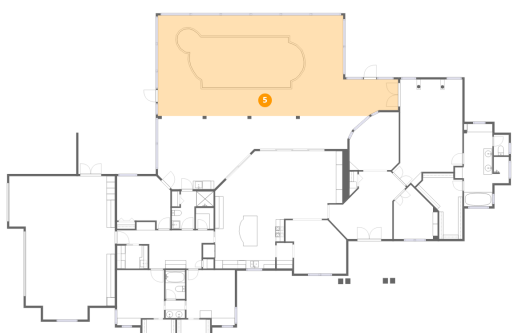
4 Floor 1 - Bath



Dimensions: 4'8" x 6'8"
Area: 33 sq. ft
Counted as living area: Yes

Heated: Yes
Finished: Yes
Enclosed: Yes
Contiguous: Yes
Permitted: Yes
Wet space: Yes
Addition: No
Conversion: No

5 Floor 1 - Screened Porch



Dimensions: 57'8" x 24'1"
Area: 1180 sq. ft
Counted as living area: No

Heated: No
Finished: No
Enclosed: No
Contiguous: Yes
Permitted: Yes
Wet space: No
Addition: No
Conversion: No

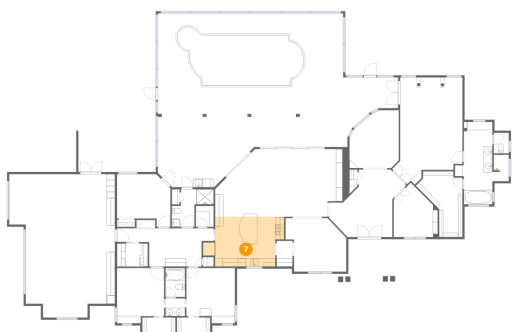
6 Floor 1 - Office



Dimensions: 10'7" x 13'0"
Area: 109 sq. ft
Counted as living area: Yes

Heated: Yes
Finished: Yes
Enclosed: Yes
Contiguous: Yes
Permitted: Yes
Wet space: No
Addition: No
Conversion: No

7 Floor 1 - Kitchen



Dimensions: 17'4" x 11'11"
Area: 193 sq. ft
Counted as living area: Yes

Heated: Yes
Finished: Yes
Enclosed: Yes
Contiguous: Yes
Permitted: Yes
Wet space: No
Addition: No
Conversion: No

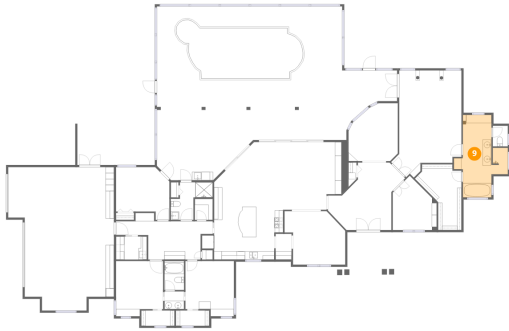
8 Floor 1 - Bedroom



Dimensions: 11'8" x 13'3"
Area: 144 sq. ft
Counted as living area: Yes

Heated: Yes
Finished: Yes
Enclosed: Yes
Contiguous: Yes
Permitted: Yes
Wet space: No
Addition: No
Conversion: No

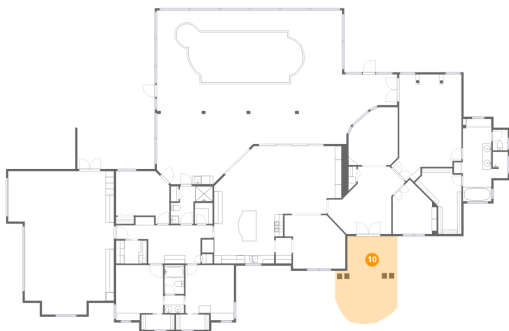
9 Floor 1 - Primary Bath



Dimensions: 12'11" x 19'10"
Area: 165 sq. ft
Counted as living area: Yes

Heated: Yes
Finished: Yes
Enclosed: Yes
Contiguous: Yes
Permitted: Yes
Wet space: Yes
Addition: No
Conversion: No

10 Floor 1 - Porch



Dimensions: 14'11" x 21'1"
Area: 270 sq. ft
Counted as living area: No

Heated: No
Finished: No
Enclosed: No
Contiguous: Yes
Permitted: Yes
Wet space: No
Addition: No
Conversion: No

11 Floor 1 - Bath

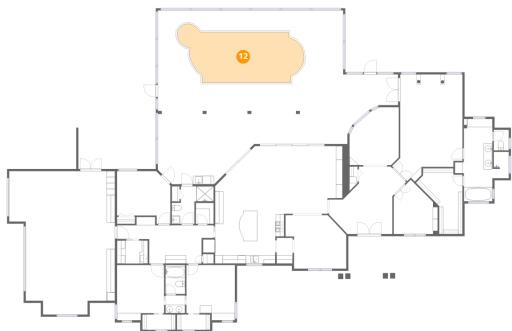


Dimensions: 7'10" x 9'0"
Area: 57 sq. ft
Counted as living area: Yes

Heated: Yes
Finished: Yes
Enclosed: Yes
Contiguous: Yes
Permitted: Yes
Wet space: Yes
Addition: No
Conversion: No

19617 Eagle Crest Drive, Lutz, Hillsborough County, Florida,
United States, 33549

12 Floor 1 - Swimming Pool



Dimensions: 27'6" x 12'1"
Area: 321 sq. ft
Counted as living area: No

Heated: No
Finished: No
Enclosed: No
Contiguous: Yes
Permitted: No
Wet space: No
Addition: No
Conversion: No

13 Floor 1 - Hall



Dimensions: 23'3" x 11'2"
Area: 159 sq. ft
Counted as living area: Yes

Heated: Yes
Finished: Yes
Enclosed: Yes
Contiguous: Yes
Permitted: Yes
Wet space: No
Addition: No
Conversion: No

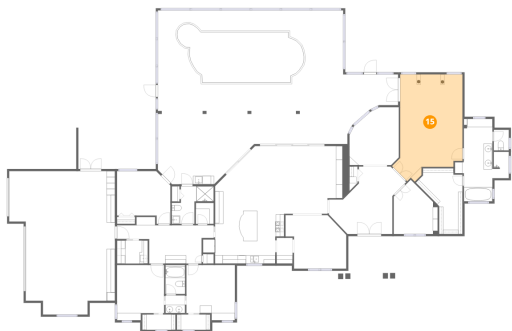
14 Floor 1 - Patio



Dimensions: 18'7" x 14'5"
Area: 268 sq. ft
Counted as living area: No

Heated: No
Finished: No
Enclosed: No
Contiguous: Yes
Permitted: Yes
Wet space: No
Addition: No
Conversion: No

15 Floor 1 - Primary Bedroom



Dimensions: 15'0" x 25'5"
Area: 347 sq. ft
Counted as living area: Yes

Heated: Yes
Finished: Yes
Enclosed: Yes
Contiguous: Yes
Permitted: Yes
Wet space: No
Addition: No
Conversion: No

16 Floor 1 - Bath



Dimensions: 4'8" x 4'3"
Area: 20 sq. ft
Counted as living area: Yes

Heated: Yes
Finished: Yes
Enclosed: Yes
Contiguous: Yes
Permitted: Yes
Wet space: Yes
Addition: No
Conversion: No

17 Floor 1 - Butler's Pantry



Dimensions: 3'10" x 6'2"
Area: 24 sq. ft
Counted as living area: Yes

Heated: Yes
Finished: Yes
Enclosed: Yes
Contiguous: Yes
Permitted: Yes
Wet space: No
Addition: No
Conversion: No

18 Floor 1 - W.I.C.



Dimensions: 8'0" x 3'8"
Area: 29 sq. ft
Counted as living area: Yes

Heated: Yes
Finished: Yes
Enclosed: Yes
Contiguous: Yes
Permitted: Yes
Wet space: No
Addition: No
Conversion: No

19 Floor 1 - Breakfast Nook



Dimensions: 12'3" x 16'3"
Area: 153 sq. ft
Counted as living area: Yes

Heated: Yes
Finished: Yes
Enclosed: Yes
Contiguous: Yes
Permitted: Yes
Wet space: No
Addition: No
Conversion: No

20 Floor 1 - Foyer



Dimensions: 15'3" x 16'2"
Area: 198 sq. ft
Counted as living area: Yes

Heated: Yes
Finished: Yes
Enclosed: Yes
Contiguous: Yes
Permitted: Yes
Wet space: No
Addition: No
Conversion: No

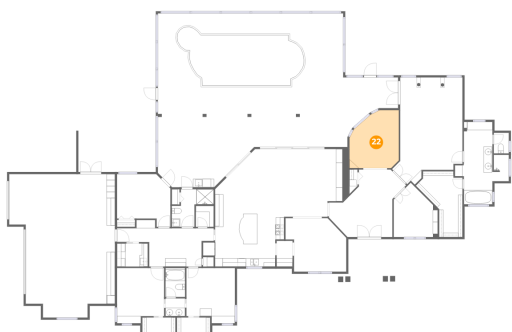
21 Floor 1 - Porch



Dimensions: 48'0" x 17'7"
Area: 543 sq. ft
Counted as living area: No

Heated: No
Finished: No
Enclosed: No
Contiguous: Yes
Permitted: Yes
Wet space: No
Addition: No
Conversion: No

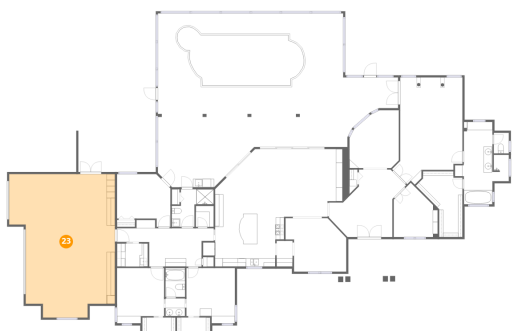
22 Floor 1 - Living Room



Dimensions: 11'10" x 13'11"
Area: 144 sq. ft
Counted as living area: Yes

Heated: Yes
Finished: Yes
Enclosed: Yes
Contiguous: Yes
Permitted: Yes
Wet space: No
Addition: No
Conversion: No

23 Floor 1 - Garage



Dimensions: 25'5" x 34'5"
Area: 749 sq. ft
Counted as living area: No

Heated: No
Finished: Yes
Enclosed: Yes
Contiguous: Yes
Permitted: Yes
Wet space: No
Addition: No
Conversion: No

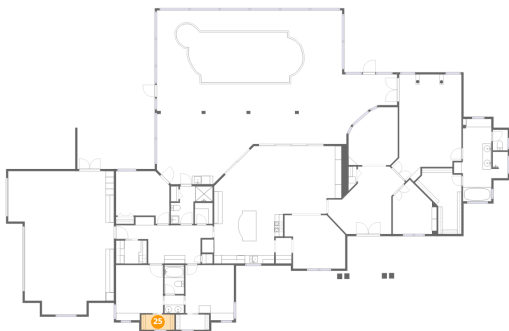
24 Floor 1 - Family Room



Dimensions: 18'3" x 16'3"
Area: 300 sq. ft
Counted as living area: Yes

Heated: Yes
Finished: Yes
Enclosed: Yes
Contiguous: Yes
Permitted: Yes
Wet space: No
Addition: No
Conversion: No

25 Floor 1 - W.I.C.



Dimensions: 8'0" x 3'8"
Area: 29 sq. ft
Counted as living area: Yes

Heated: Yes
Finished: Yes
Enclosed: Yes
Contiguous: Yes
Permitted: Yes
Wet space: No
Addition: No
Conversion: No

26 Floor 1 - Bedroom



Dimensions: 11'4" x 13'3"
Area: 140 sq. ft
Counted as living area: Yes

Heated: Yes
Finished: Yes
Enclosed: Yes
Contiguous: Yes
Permitted: Yes
Wet space: No
Addition: No
Conversion: No

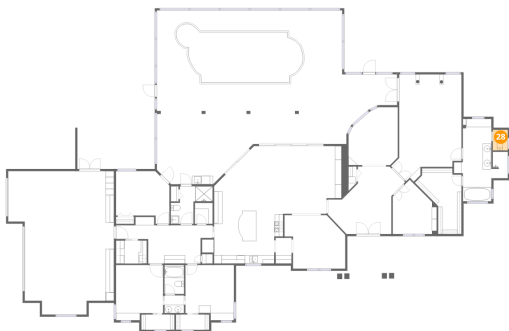
27 Floor 1 - Pantry



Dimensions: 4'3" x 5'1"
Area: 22 sq. ft
Counted as living area: Yes

Heated: Yes
Finished: Yes
Enclosed: Yes
Contiguous: Yes
Permitted: Yes
Wet space: No
Addition: No
Conversion: No

28 Floor 1 - Bath



Dimensions: 3'7" x 4'11"
Area: 18 sq. ft
Counted as living area: Yes

Heated: Yes
Finished: Yes
Enclosed: Yes
Contiguous: Yes
Permitted: Yes
Wet space: No
Addition: No
Conversion: No

29 Floor 1 - Dining Area



Dimensions: 14'7" x 12'10"
Area: 161 sq. ft
Counted as living area: Yes

Heated: Yes
Finished: Yes
Enclosed: Yes
Contiguous: Yes
Permitted: Yes
Wet space: No
Addition: No
Conversion: No