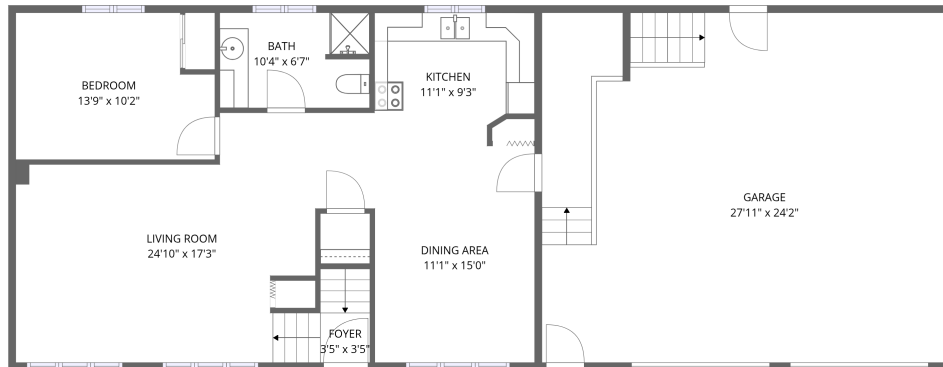
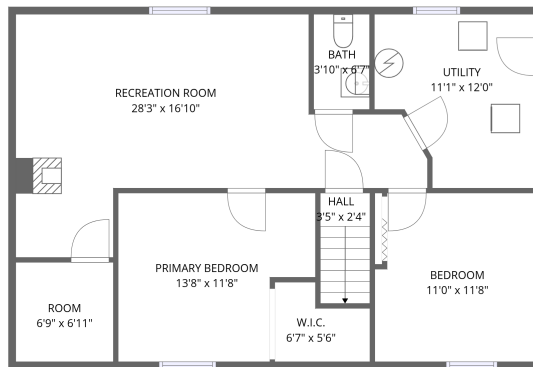


Home data report

s2795 Natwick Road, Jefferson, Westby, Vernon County,
Wisconsin, United States, 54667



1st floor



Basement

Total Area: 1617 sq. ft

Basement: 748 sq. ft, 1st Floor: 869 sq. ft

Excluded: Utility 115 sq. ft, Garage 675 sq. ft, Walls: 164 sq. ft

Property summary



Home data report

**s2795 Natwick Road, Jefferson, Westby, Vernon County,
Wisconsin, United States, 54667**



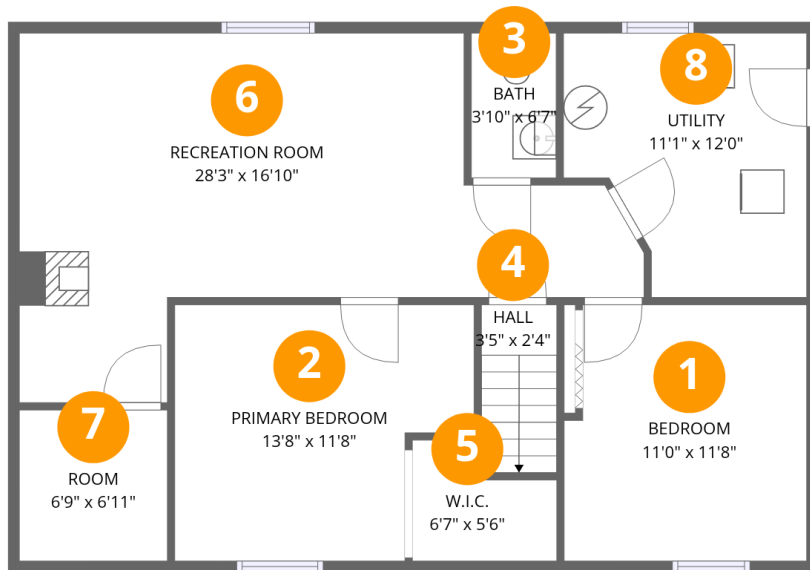
1
Half baths



1
Garages

Home data report

s2795 Natwick Road, Jefferson, Westby, Vernon County,
Wisconsin, United States, 54667



Room dimensions

Floor 1 Below grade

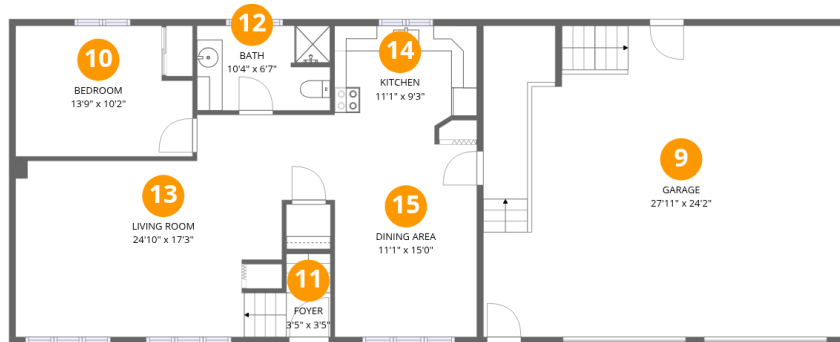
Total:748sqft

Excluded: 115sqft

#		Dimensions	sqft	Counted as living area
1	Bedroom	11'0" x 11'8"	125 sq. ft	Yes
2	Primary Bedroom	13'8" x 11'8"	141 sq. ft	Yes
3	Bath	3'10" x 6'7"	25 sq. ft	Yes
4	Hall	3'5" x 2'4"	26 sq. ft	Yes
5	W.I.C.	6'7" x 5'6"	29 sq. ft	Yes
6	Recreation Room	28'3" x 16'10"	315 sq. ft	Yes
7	Room	6'9" x 6'11"	46 sq. ft	Yes
8	Utility	11'1" x 12'0"	115 sq. ft	No

Home data report

s2795 Natwick Road, Jefferson, Westby, Vernon County, Wisconsin, United States, 54667



Room dimensions

Floor 2

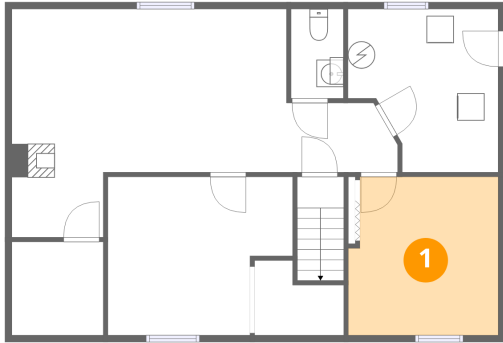
Total:869sqft

Excluded: 675sqft

#		Dimensions	sqft	Counted as living area
9	Garage	27'11" x 24'2"	675 sq. ft	No
10	Bedroom	13'9" x 10'2"	130 sq. ft	Yes
11	Foyer	3'5" x 3'5"	22 sq. ft	Yes
12	Bath	10'4" x 6'7"	67 sq. ft	Yes
13	Living Room	24'10" x 17'3"	328 sq. ft	Yes
14	Kitchen	11'1" x 9'3"	95 sq. ft	Yes
15	Dining Area	11'1" x 15'0"	166 sq. ft	Yes

s2795 Natwick Road, Jefferson, Westby, Vernon County,
Wisconsin, United States, 54667

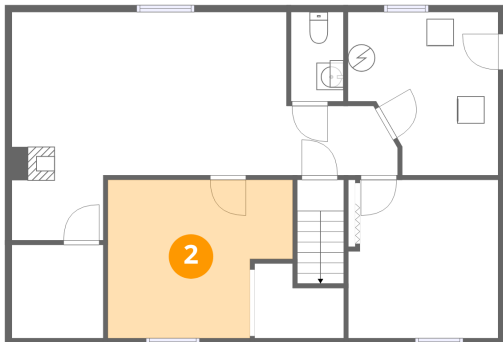
1 Floor 1 - Bedroom



Dimensions: 11'0" x 11'8"
Area: 125 sq. ft
Counted as living area: Yes

Heated: Yes
Finished: Yes
Enclosed: Yes
Contiguous: Yes
Permitted: Yes
Wet space: No
Addition: No
Conversion: No

2 Floor 1 - Primary Bedroom

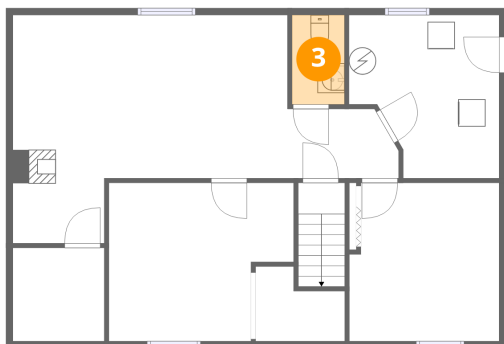


Dimensions: 13'8" x 11'8"
Area: 141 sq. ft
Counted as living area: Yes

Heated: Yes
Finished: Yes
Enclosed: Yes
Contiguous: Yes
Permitted: Yes
Wet space: No
Addition: No
Conversion: No

s2795 Natwick Road, Jefferson, Westby, Vernon County,
Wisconsin, United States, 54667

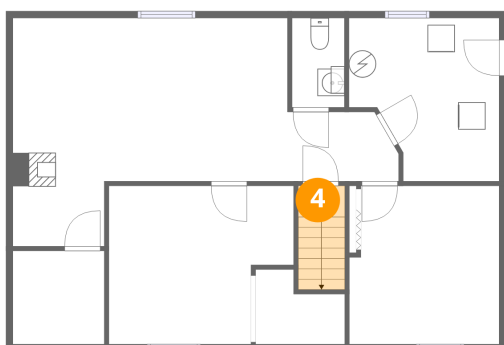
3 Floor 1 - Bath



Dimensions: 3'10" x 6'7"
Area: 25 sq. ft
Counted as living area: Yes

Heated: Yes
Finished: Yes
Enclosed: Yes
Contiguous: Yes
Permitted: Yes
Wet space: Yes
Addition: No
Conversion: No

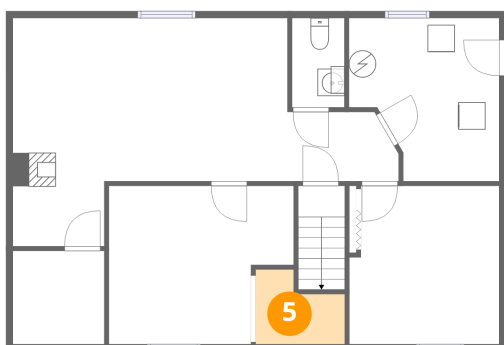
4 Floor 1 - Hall



Dimensions: 3'5" x 2'4"
Area: 26 sq. ft
Counted as living area: Yes

Heated: Yes
Finished: Yes
Enclosed: Yes
Contiguous: Yes
Permitted: Yes
Wet space: No
Addition: No
Conversion: No

5 Floor 1 - W.I.C.

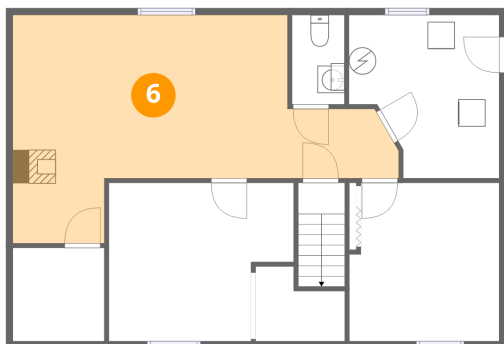


Dimensions: 6'7" x 5'6"
Area: 29 sq. ft
Counted as living area: Yes

Heated: Yes
Finished: Yes
Enclosed: Yes
Contiguous: Yes
Permitted: Yes
Wet space: No
Addition: No
Conversion: No

s2795 Natwick Road, Jefferson, Westby, Vernon County,
Wisconsin, United States, 54667

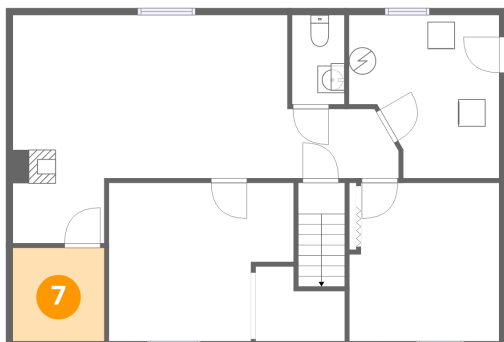
6 Floor 1 - Recreation Room



Dimensions: 28'3" x 16'10"
Area: 315 sq. ft
Counted as living area: Yes

Heated: Yes
Finished: Yes
Enclosed: Yes
Contiguous: Yes
Permitted: Yes
Wet space: No
Addition: No
Conversion: No

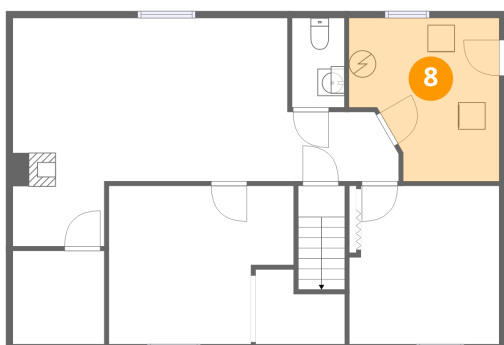
7 Floor 1 - Room



Dimensions: 6'9" x 6'11"
Area: 46 sq. ft
Counted as living area: Yes

Heated: Yes
Finished: Yes
Enclosed: Yes
Contiguous: Yes
Permitted: Yes
Wet space: No
Addition: No
Conversion: No

8 Floor 1 - Utility

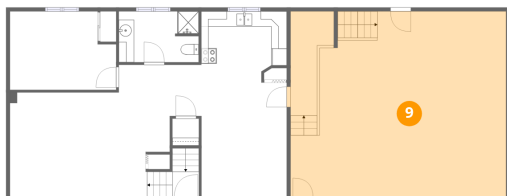


Dimensions: 11'1" x 12'0"
Area: 115 sq. ft
Counted as living area: No

Heated: Yes
Finished: No
Enclosed: Yes
Contiguous: Yes
Permitted: Yes
Wet space: No
Addition: No
Conversion: No

s2795 Natwick Road, Jefferson, Westby, Vernon County,
Wisconsin, United States, 54667

9 Floor 2 - Garage



Dimensions: 27'11" x 24'2"

Area: 675 sq. ft

Counted as living area: No

Heated: No

Finished: No

Enclosed: Yes

Contiguous: Yes

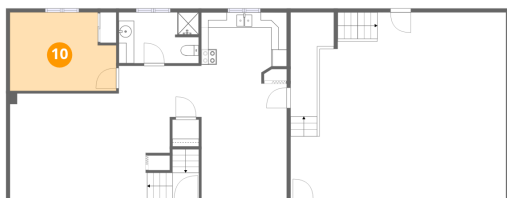
Permitted: Yes

Wet space: No

Addition: No

Conversion: No

10 Floor 2 - Bedroom



Dimensions: 13'9" x 10'2"

Area: 130 sq. ft

Counted as living area: Yes

Heated: Yes

Finished: Yes

Enclosed: Yes

Contiguous: Yes

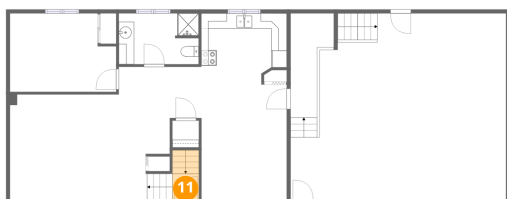
Permitted: Yes

Wet space: No

Addition: No

Conversion: No

11 Floor 2 - Foyer



Dimensions: 3'5" x 3'5"

Area: 22 sq. ft

Counted as living area: Yes

Heated: Yes

Finished: Yes

Enclosed: Yes

Contiguous: Yes

Permitted: Yes

Wet space: No

Addition: No

Conversion: No

s2795 Natwick Road, Jefferson, Westby, Vernon County,
Wisconsin, United States, 54667

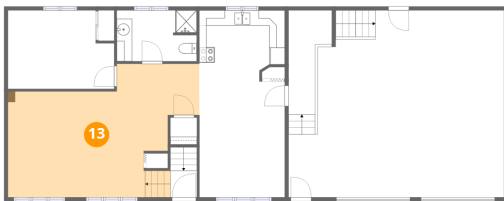
12 Floor 2 - Bath



Dimensions: 10'4" x 6'7"
Area: 67 sq. ft
Counted as living area: Yes

Heated: Yes
Finished: Yes
Enclosed: Yes
Contiguous: Yes
Permitted: Yes
Wet space: Yes
Addition: No
Conversion: No

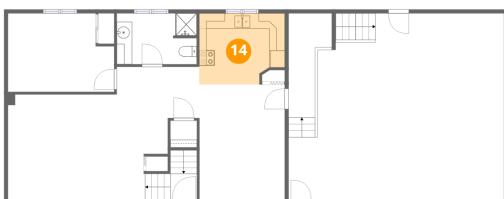
13 Floor 2 - Living Room



Dimensions: 24'10" x 17'3"
Area: 328 sq. ft
Counted as living area: Yes

Heated: Yes
Finished: Yes
Enclosed: Yes
Contiguous: Yes
Permitted: Yes
Wet space: No
Addition: No
Conversion: No

14 Floor 2 - Kitchen



Dimensions: 11'1" x 9'3"
Area: 95 sq. ft
Counted as living area: Yes

Heated: Yes
Finished: Yes
Enclosed: Yes
Contiguous: Yes
Permitted: Yes
Wet space: No
Addition: No
Conversion: No

Home data report

s2795 Natwick Road, Jefferson, Westby, Vernon County,
Wisconsin, United States, 54667

15 Floor 2 - Dining Area



Dimensions: 11'1" x 15'0"

Area: 166 sq. ft

Counted as living area: Yes

Heated: Yes

Finished: Yes

Enclosed: Yes

Contiguous: Yes

Permitted: Yes

Wet space: No

Addition: No

Conversion: No