

Home data report

1041 Harbour Inn Lane, Moneta, Bedford County, Virginia,
United States, 24121



Total Area: 6366 sq. ft

1st Floor: 4683 sq. ft, 2nd Floor: 1683 sq. ft

Excluded: Deck 3129 sq. ft, Storage 1005 sq. ft, Undefined 36 sq. ft, Patio 121 sq. ft,
Walls: 328 sq. ft

Property summary



Home data report

1041 Harbour Inn Lane, Moneta, Bedford County, Virginia,
United States, 24121



Room dimensions

Floor 1

Total:4683sqft

Excluded: 3129sqft

#		Dimensions	sqft	Counted as living area
1	Dining Area	53'7" x 37'9"	1932 sq. ft	Yes
2	Bath	10'4" x 8'7"	72 sq. ft	Yes
3	Bath	10'9" x 9'10"	88 sq. ft	Yes
4	Deck	33'3" x 48'11"	1625 sq. ft	No
5	Deck	47'7" x 48'11"	660 sq. ft	No
6	Deck	21'1" x 38'5"	509 sq. ft	No
7	Room	8'2" x 11'4"	93 sq. ft	Yes
8	Bath	4'3" x 8'7"	37 sq. ft	Yes
9	Bath	4'9" x 9'10"	47 sq. ft	Yes
10	Kitchen	32'6" x 64'7"	1306 sq. ft	Yes
11	Deck	47'11" x 7'3"	335 sq. ft	No

Home data report

**1041 Harbour Inn Lane, Moneta, Bedford County, Virginia,
United States, 24121**

#		Dimensions	sqft	Counted as living area
12	Pantry	9'2" x 11'10"	109 sq. ft	Yes
13	Foyer	16'0" x 8'7"	100 sq. ft	Yes
14	Bath	2'9" x 5'4"	15 sq. ft	Yes
15	Bar	7'10" x 28'7"	215 sq. ft	Yes
16	Bar	14'11" x 35'6"	496 sq. ft	Yes
17	Bath	3'7" x 4'1"	15 sq. ft	Yes

Home data report

1041 Harbour Inn Lane, Moneta, Bedford County, Virginia,
United States, 24121



Room dimensions

Floor 2

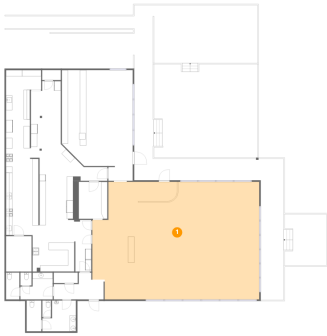
Total:1683sqft

Excluded: 1162sqft

#		Dimensions	sqft	Counted as living area
18	Room	23'6" x 34'6"	732 sq. ft	Yes
19	Storage	8'1" x 11'3"	91 sq. ft	No
20	Patio	11'10" x 4'11"	58 sq. ft	No
21	Patio	11'10" x 5'4"	63 sq. ft	No
22	Storage	11'4" x 8'6"	97 sq. ft	No
23	Bath	6'9" x 7'11"	53 sq. ft	Yes
24	Storage	36'10" x 16'1"	432 sq. ft	No
25	Storage	23'6" x 15'8"	371 sq. ft	No
26	Storage	23'6" x 21'7"	502 sq. ft	Yes
27	Office	20'3" x 16'1"	325 sq. ft	Yes

1041 Harbour Inn Lane, Moneta, Bedford County, Virginia,
United States, 24121

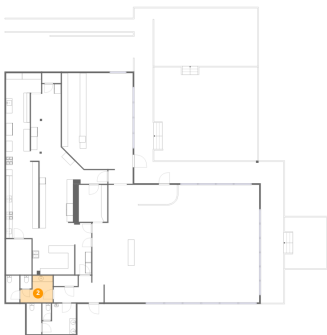
1 Floor 1 - Dining Area



Dimensions: 53'7" x 37'9"
Area: 1932 sq. ft
Counted as living area: Yes

Heated: Yes
Finished: Yes
Enclosed: Yes
Contiguous: Yes
Permitted: Yes
Wet space: No
Addition: No
Conversion: No

2 Floor 1 - Bath

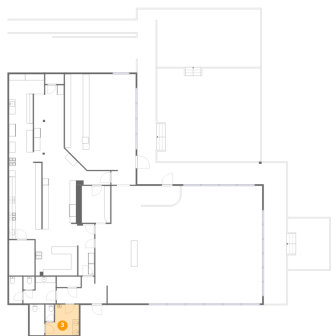


Dimensions: 10'4" x 8'7"
Area: 72 sq. ft
Counted as living area: Yes

Heated: Yes
Finished: Yes
Enclosed: Yes
Contiguous: Yes
Permitted: Yes
Wet space: Yes
Addition: No
Conversion: No

1041 Harbour Inn Lane, Moneta, Bedford County, Virginia,
United States, 24121

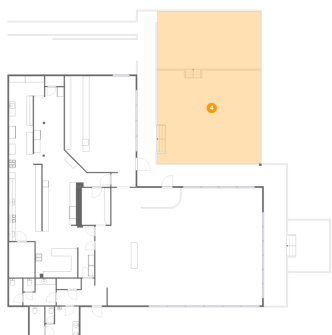
3 Floor 1 - Bath



Dimensions: 10'9" x 9'10"
Area: 88 sq. ft
Counted as living area: Yes

Heated: Yes
Finished: Yes
Enclosed: Yes
Contiguous: Yes
Permitted: Yes
Wet space: Yes
Addition: No
Conversion: No

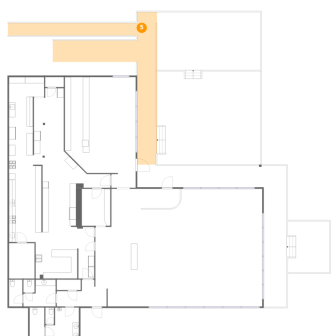
4 Floor 1 - Deck



Dimensions: 33'3" x 48'11"
Area: 1625 sq. ft
Counted as living area: No

Heated: No
Finished: No
Enclosed: No
Contiguous: Yes
Permitted: Yes
Wet space: No
Addition: No
Conversion: No

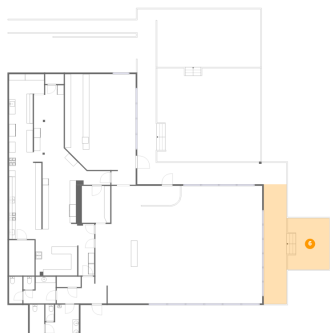
5 Floor 1 - Deck



Dimensions: 47'7" x 48'11"
Area: 660 sq. ft
Counted as living area: No

Heated: No
Finished: No
Enclosed: No
Contiguous: Yes
Permitted: Yes
Wet space: No
Addition: No
Conversion: No

6 Floor 1 - Deck



Dimensions: 21'1" x 38'5"
Area: 509 sq. ft
Counted as living area: No

Heated: No
Finished: No
Enclosed: No
Contiguous: Yes
Permitted: Yes
Wet space: No
Addition: No
Conversion: No

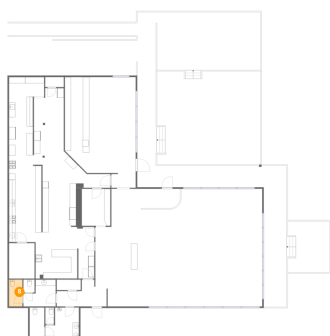
7 Floor 1 - Room



Dimensions: 8'2" x 11'4"
Area: 93 sq. ft
Counted as living area: Yes

Heated: Yes
Finished: Yes
Enclosed: Yes
Contiguous: Yes
Permitted: Yes
Wet space: No
Addition: No
Conversion: No

8 Floor 1 - Bath

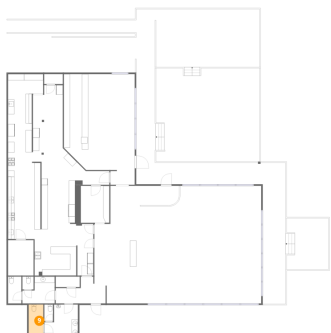


Dimensions: 4'3" x 8'7"
Area: 37 sq. ft
Counted as living area: Yes

Heated: Yes
Finished: Yes
Enclosed: Yes
Contiguous: Yes
Permitted: Yes
Wet space: Yes
Addition: No
Conversion: No

1041 Harbour Inn Lane, Moneta, Bedford County, Virginia,
United States, 24121

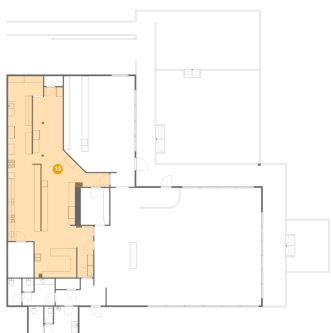
9 Floor 1 - Bath



Dimensions: 4'9" x 9'10"
Area: 47 sq. ft
Counted as living area: Yes

Heated: Yes
Finished: Yes
Enclosed: Yes
Contiguous: Yes
Permitted: Yes
Wet space: Yes
Addition: No
Conversion: No

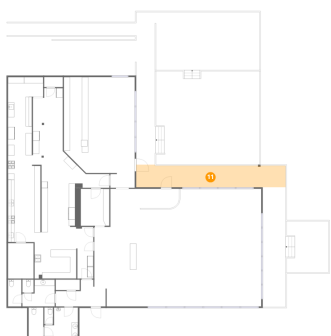
10 Floor 1 - Kitchen



Dimensions: 32'6" x 64'7"
Area: 1306 sq. ft
Counted as living area: Yes

Heated: Yes
Finished: Yes
Enclosed: Yes
Contiguous: Yes
Permitted: Yes
Wet space: No
Addition: No
Conversion: No

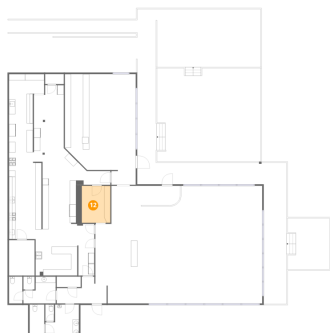
11 Floor 1 - Deck



Dimensions: 47'11" x 7'3"
Area: 335 sq. ft
Counted as living area: No

Heated: No
Finished: No
Enclosed: No
Contiguous: Yes
Permitted: Yes
Wet space: No
Addition: No
Conversion: No

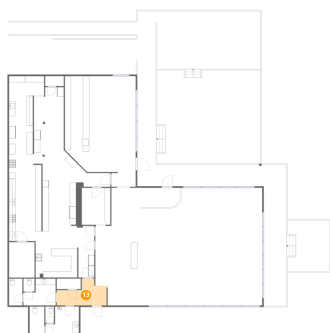
12 Floor 1 - Pantry



Dimensions: 9'2" x 11'10"
Area: 109 sq. ft
Counted as living area: Yes

Heated: Yes
Finished: Yes
Enclosed: Yes
Contiguous: Yes
Permitted: Yes
Wet space: No
Addition: No
Conversion: No

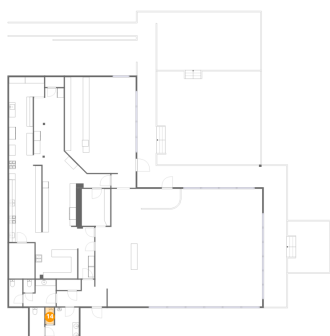
13 Floor 1 - Foyer



Dimensions: 16'0" x 8'7"
Area: 100 sq. ft
Counted as living area: Yes

Heated: Yes
Finished: Yes
Enclosed: Yes
Contiguous: Yes
Permitted: Yes
Wet space: No
Addition: No
Conversion: No

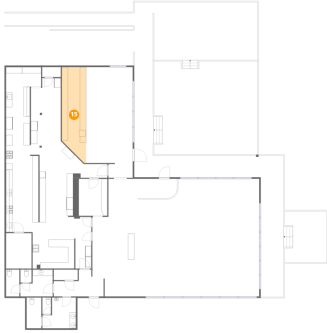
14 Floor 1 - Bath



Dimensions: 2'9" x 5'4"
Area: 15 sq. ft
Counted as living area: Yes

Heated: Yes
Finished: Yes
Enclosed: Yes
Contiguous: Yes
Permitted: Yes
Wet space: No
Addition: No
Conversion: No

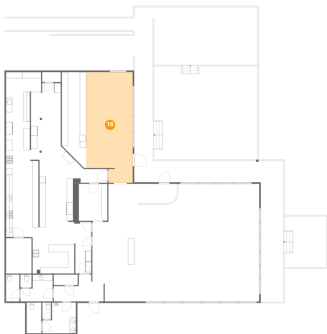
15 Floor 1 - Bar



Dimensions: 7'10" x 28'7"
Area: 215 sq. ft
Counted as living area: Yes

Heated: Yes
Finished: Yes
Enclosed: Yes
Contiguous: Yes
Permitted: Yes
Wet space: No
Addition: No
Conversion: No

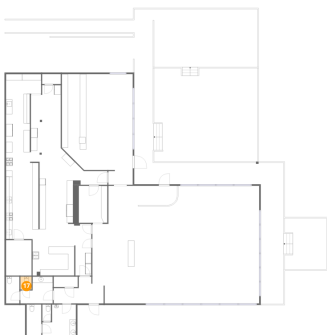
16 Floor 1 - Bar



Dimensions: 14'11" x 35'6"
Area: 496 sq. ft
Counted as living area: Yes

Heated: Yes
Finished: Yes
Enclosed: Yes
Contiguous: Yes
Permitted: Yes
Wet space: No
Addition: No
Conversion: No

17 Floor 1 - Bath

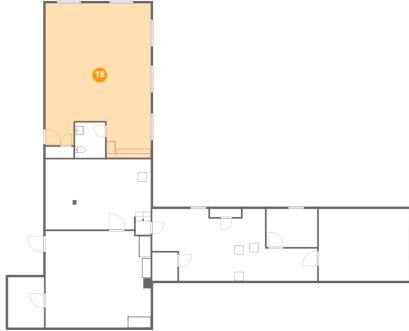


Dimensions: 3'7" x 4'1"
Area: 15 sq. ft
Counted as living area: Yes

Heated: Yes
Finished: Yes
Enclosed: Yes
Contiguous: Yes
Permitted: Yes
Wet space: No
Addition: No
Conversion: No

1041 Harbour Inn Lane, Moneta, Bedford County, Virginia,
United States, 24121

18 Floor 2 - Room



Dimensions: 23'6" x 34'6"
Area: 732 sq. ft
Counted as living area: Yes

Heated: Yes
Finished: Yes
Enclosed: Yes
Contiguous: Yes
Permitted: Yes
Wet space: No
Addition: No
Conversion: No

19 Floor 2 - Storage



Dimensions: 8'1" x 11'3"
Area: 91 sq. ft
Counted as living area: No

Heated: No
Finished: No
Enclosed: No
Contiguous: Yes
Permitted: Yes
Wet space: No
Addition: No
Conversion: No

20 Floor 2 - Patio



Dimensions: 11'10" x 4'11"
Area: 58 sq. ft
Counted as living area: No

Heated: No
Finished: No
Enclosed: No
Contiguous: Yes
Permitted: Yes
Wet space: No
Addition: No
Conversion: No

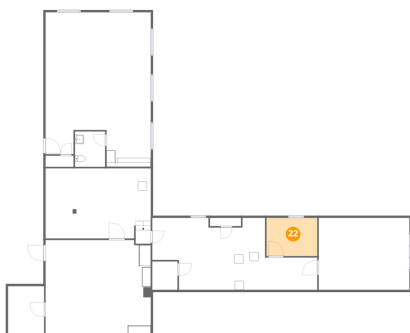
21 Floor 2 - Patio



Dimensions: 11'10" x 5'4"
Area: 63 sq. ft
Counted as living area: No

Heated: No
Finished: No
Enclosed: No
Contiguous: Yes
Permitted: Yes
Wet space: No
Addition: No
Conversion: No

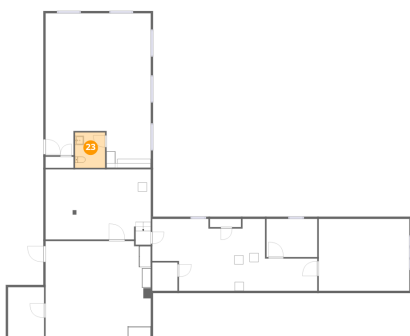
22 Floor 2 - Storage



Dimensions: 11'4" x 8'6"
Area: 97 sq. ft
Counted as living area: No

Heated: No
Finished: Yes
Enclosed: No
Contiguous: Yes
Permitted: Yes
Wet space: No
Addition: No
Conversion: No

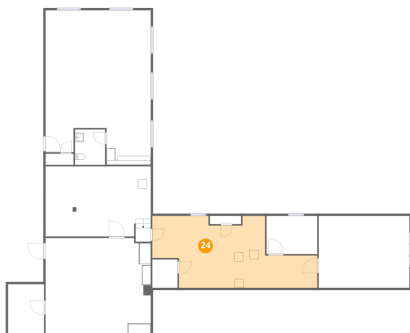
23 Floor 2 - Bath



Dimensions: 6'9" x 7'11"
Area: 53 sq. ft
Counted as living area: Yes

Heated: Yes
Finished: Yes
Enclosed: Yes
Contiguous: Yes
Permitted: Yes
Wet space: Yes
Addition: No
Conversion: No

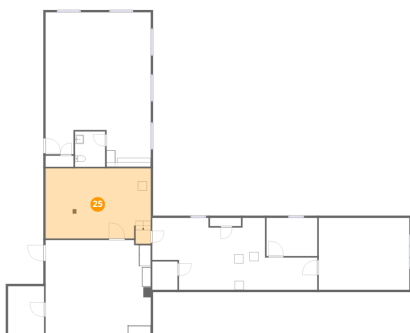
24 Floor 2 - Storage



Dimensions: 36'10" x 16'1"
Area: 432 sq. ft
Counted as living area: No

Heated: Yes
Finished: Yes
Enclosed: No
Contiguous: No
Permitted: Yes
Wet space: No
Addition: No
Conversion: No

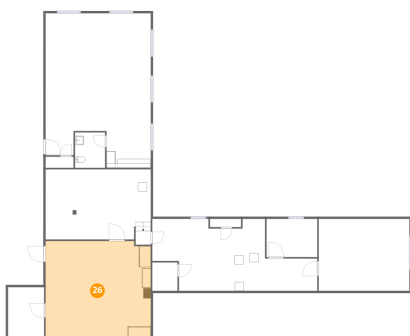
25 Floor 2 - Storage



Dimensions: 23'6" x 15'8"
Area: 371 sq. ft
Counted as living area: No

Heated: No
Finished: No
Enclosed: No
Contiguous: Yes
Permitted: Yes
Wet space: No
Addition: No
Conversion: No

26 Floor 2 - Storage



Dimensions: 23'6" x 21'7"
Area: 502 sq. ft
Counted as living area: No

Heated: Yes
Finished: Yes
Enclosed: Yes
Contiguous: No
Permitted: Yes
Wet space: No
Addition: No
Conversion: No

Home data report

1041 Harbour Inn Lane, Moneta, Bedford County, Virginia,
United States, 24121

27 Floor 2 - Office



Dimensions: 20'3" x 16'1"
Area: 325 sq. ft
Counted as living area: Yes

Heated: Yes
Finished: Yes
Enclosed: Yes
Contiguous: Yes
Permitted: Yes
Wet space: No
Addition: No
Conversion: No