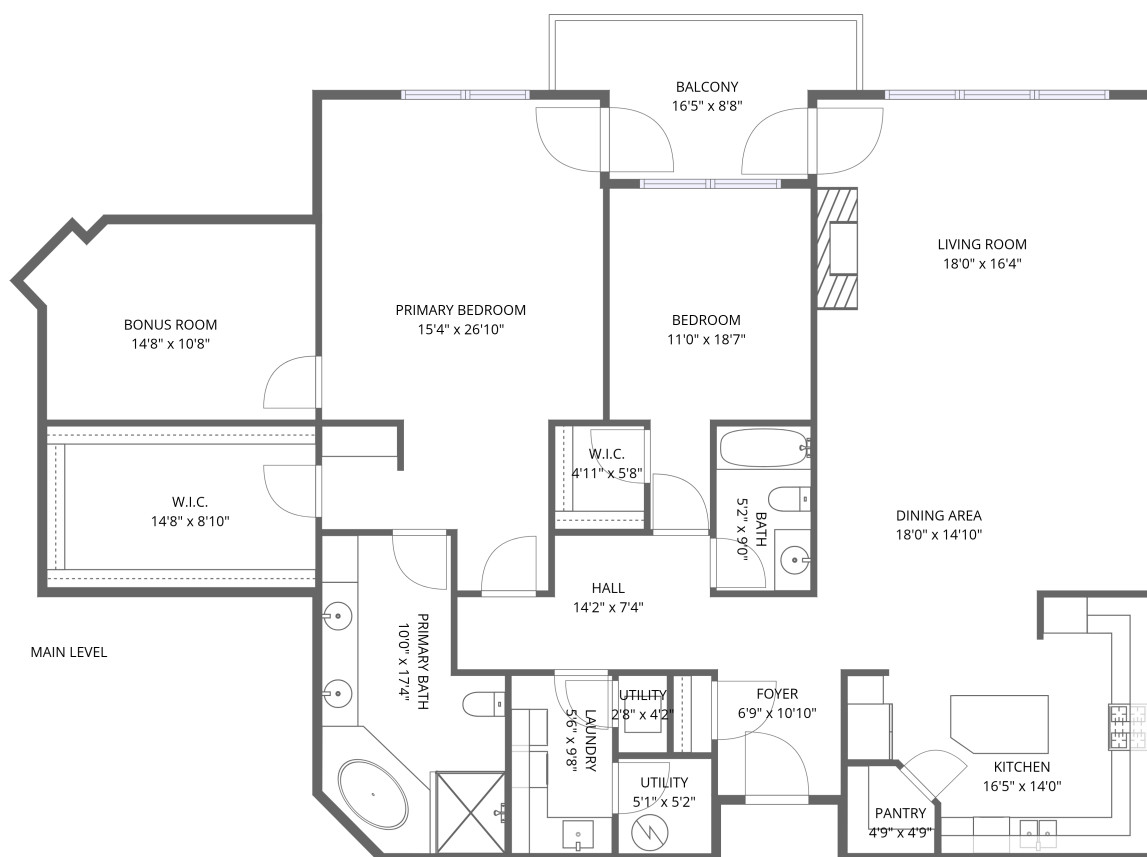


Home data report

5452 The Peaks Dr, Cave Spring, Roanoke, Roanoke County, Virginia, United States, 24018



Total Area: 2025 sq. ft

1st Floor: 2025 sq. ft

Excluded: Utility 38 sq. ft, Balcony 115 sq. ft, Walls: 0 sq. ft

Property summary

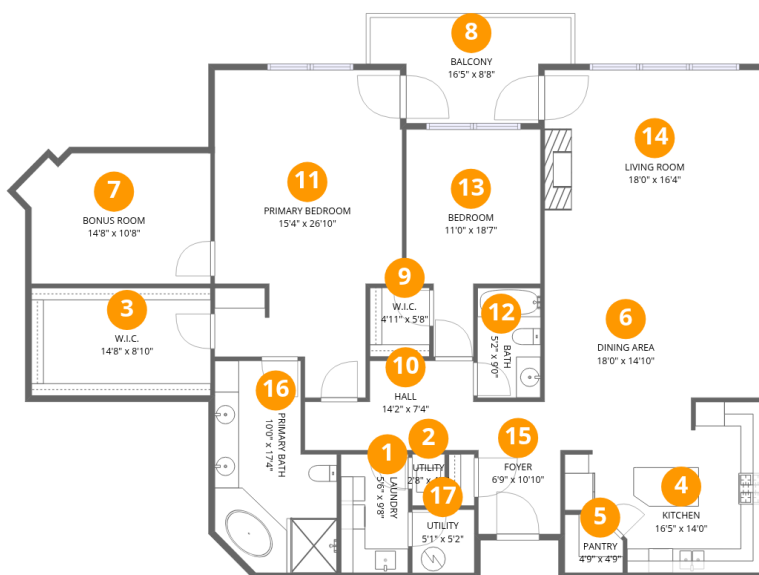
 **1** Floors

 **2** Bedrooms

 **2** Bathrooms

Home data report

5452 The Peaks Dr, Cave Spring, Roanoke, Roanoke County, Virginia, United States, 24018



Room dimensions

Floor 1

Total:2025sqft Excluded: 153sqft

#		Dimensions	sqft	Counted as living area
1	Laundry	5'6" x 9'8"	53 sq. ft	Yes
2	Utility	2'8" x 4'2"	11 sq. ft	No
3	W.I.C.	14'8" x 8'10"	129 sq. ft	Yes
4	Kitchen	16'5" x 14'0"	230 sq. ft	Yes
5	Pantry	4'9" x 4'9"	23 sq. ft	Yes
6	Dining Area	18'0" x 14'10"	267 sq. ft	Yes
7	Bonus Room	14'8" x 10'8"	156 sq. ft	Yes
8	Balcony	16'5" x 8'8"	142 sq. ft	No
9	W.I.C.	4'11" x 5'8"	28 sq. ft	Yes
10	Hall	14'2" x 7'4"	104 sq. ft	Yes
11	Primary Bedroom	15'4" x 26'10"	411 sq. ft	Yes

Home data report

**5452 The Peaks Dr, Cave Spring, Roanoke, Roanoke County,
Virginia, United States, 24018**

#		Dimensions	sqft	Counted as living area
12	Bath	5'2" x 9'0"	46 sq. ft	Yes
13	Bedroom	11'0" x 18'7"	204 sq. ft	Yes
14	Living Room	18'0" x 16'4"	295 sq. ft	Yes
15	Foyer	6'9" x 10'10"	73 sq. ft	Yes
16	Primary Bath	10'0" x 17'4"	173 sq. ft	Yes
17	Utility	5'1" x 5'2"	26 sq. ft	No

5452 The Peaks Dr, Cave Spring, Roanoke, Roanoke County, Virginia, United States, 24018

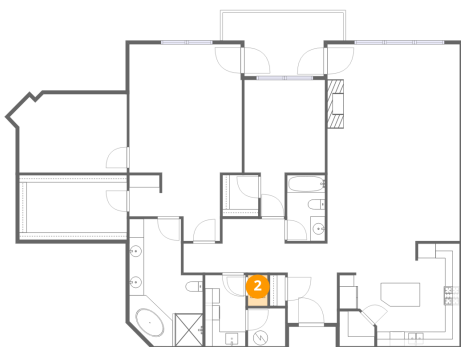
1 Floor 1 - Laundry



Dimensions: 5'6" x 9'8"
Area: 53 sq. ft
Counted as living area: Yes

Heated: Yes
Finished: Yes
Enclosed: Yes
Contiguous: Yes
Permitted: Yes
Wet space: No
Addition: No
Conversion: No

2 Floor 1 - Utility

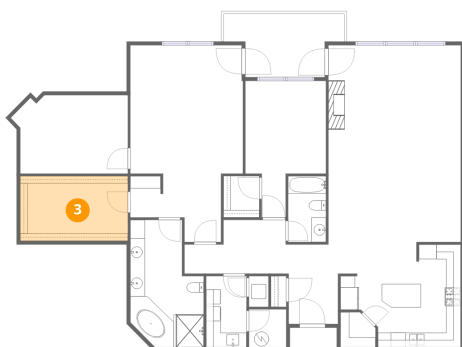


Dimensions: 2'8" x 4'2"
Area: 11 sq. ft
Counted as living area: No

Heated: Yes
Finished: No
Enclosed: Yes
Contiguous: Yes
Permitted: Yes
Wet space: No
Addition: No
Conversion: No

5452 The Peaks Dr, Cave Spring, Roanoke, Roanoke County, Virginia, United States, 24018

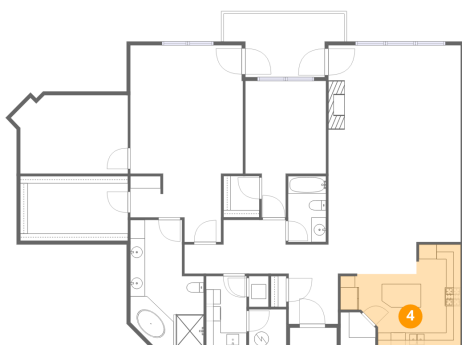
3 Floor 1 - W.I.C.



Dimensions: 14'8" x 8'10"
Area: 129 sq. ft
Counted as living area: Yes

Heated: Yes
Finished: Yes
Enclosed: Yes
Contiguous: Yes
Permitted: Yes
Wet space: No
Addition: No
Conversion: No

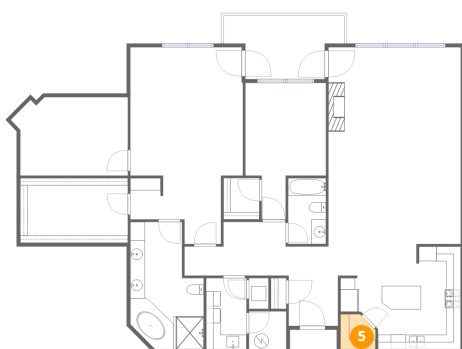
4 Floor 1 - Kitchen



Dimensions: 16'5" x 14'0"
Area: 230 sq. ft
Counted as living area: Yes

Heated: Yes
Finished: Yes
Enclosed: Yes
Contiguous: Yes
Permitted: Yes
Wet space: No
Addition: No
Conversion: No

5 Floor 1 - Pantry

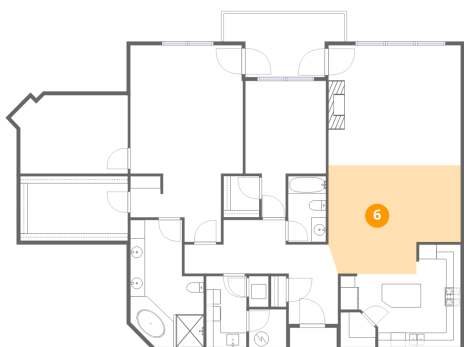


Dimensions: 4'9" x 4'9"
Area: 23 sq. ft
Counted as living area: Yes

Heated: Yes
Finished: Yes
Enclosed: Yes
Contiguous: Yes
Permitted: Yes
Wet space: No
Addition: No
Conversion: No

5452 The Peaks Dr, Cave Spring, Roanoke, Roanoke County, Virginia, United States, 24018

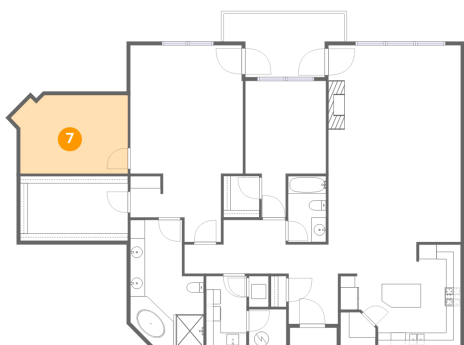
6 Floor 1 - Dining Area



Dimensions: 18'0" x 14'10"
Area: 267 sq. ft
Counted as living area: Yes

Heated: Yes
Finished: Yes
Enclosed: Yes
Contiguous: Yes
Permitted: Yes
Wet space: No
Addition: No
Conversion: No

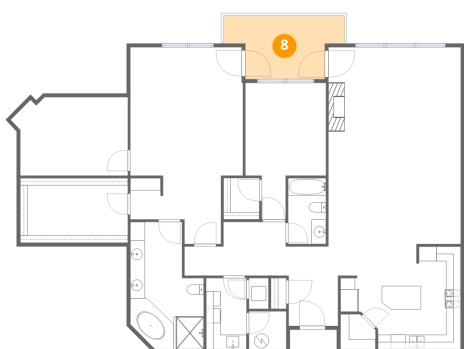
7 Floor 1 - Bonus Room



Dimensions: 14'8" x 10'8"
Area: 156 sq. ft
Counted as living area: Yes

Heated: Yes
Finished: Yes
Enclosed: Yes
Contiguous: Yes
Permitted: Yes
Wet space: No
Addition: No
Conversion: No

8 Floor 1 - Balcony

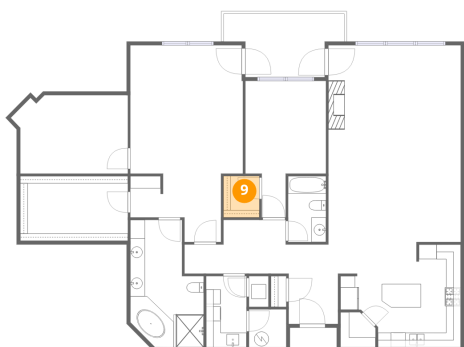


Dimensions: 16'5" x 8'8"
Area: 142 sq. ft
Counted as living area: No

Heated: No
Finished: No
Enclosed: No
Contiguous: Yes
Permitted: Yes
Wet space: No
Addition: No
Conversion: No

5452 The Peaks Dr, Cave Spring, Roanoke, Roanoke County, Virginia, United States, 24018

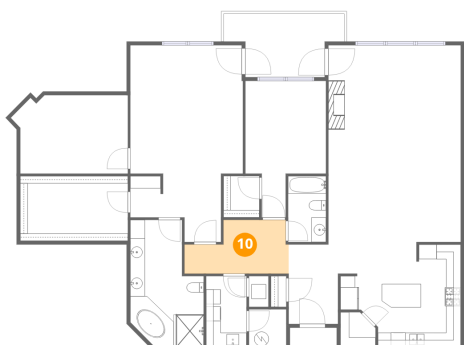
9 Floor 1 - W.I.C.



Dimensions: 4'11" x 5'8"
Area: 28 sq. ft
Counted as living area: Yes

Heated: Yes
Finished: Yes
Enclosed: Yes
Contiguous: Yes
Permitted: Yes
Wet space: No
Addition: No
Conversion: No

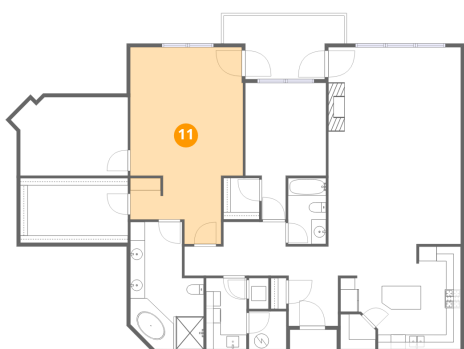
10 Floor 1 - Hall



Dimensions: 14'2" x 7'4"
Area: 104 sq. ft
Counted as living area: Yes

Heated: Yes
Finished: Yes
Enclosed: Yes
Contiguous: Yes
Permitted: Yes
Wet space: No
Addition: No
Conversion: No

11 Floor 1 - Primary Bedroom

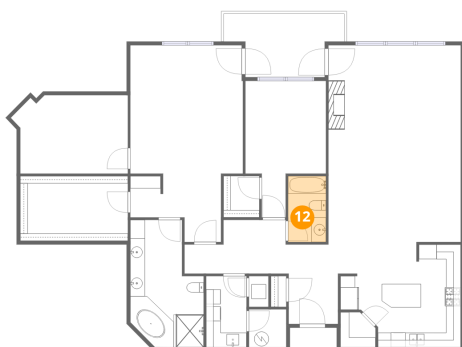


Dimensions: 15'4" x 26'10"
Area: 411 sq. ft
Counted as living area: Yes

Heated: Yes
Finished: Yes
Enclosed: Yes
Contiguous: Yes
Permitted: Yes
Wet space: No
Addition: No
Conversion: No

5452 The Peaks Dr, Cave Spring, Roanoke, Roanoke County, Virginia, United States, 24018

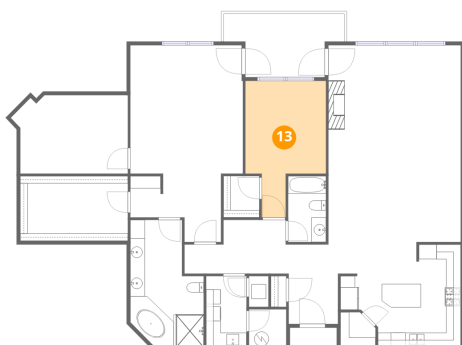
12 Floor 1 - Bath



Dimensions: 5'2" x 9'0"
Area: 46 sq. ft
Counted as living area: Yes

Heated: Yes
Finished: Yes
Enclosed: Yes
Contiguous: Yes
Permitted: Yes
Wet space: Yes
Addition: No
Conversion: No

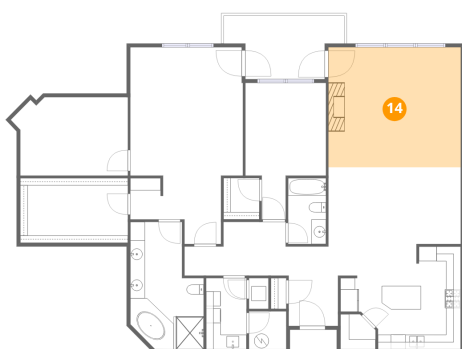
13 Floor 1 - Bedroom



Dimensions: 11'0" x 18'7"
Area: 204 sq. ft
Counted as living area: Yes

Heated: Yes
Finished: Yes
Enclosed: Yes
Contiguous: Yes
Permitted: Yes
Wet space: No
Addition: No
Conversion: No

14 Floor 1 - Living Room

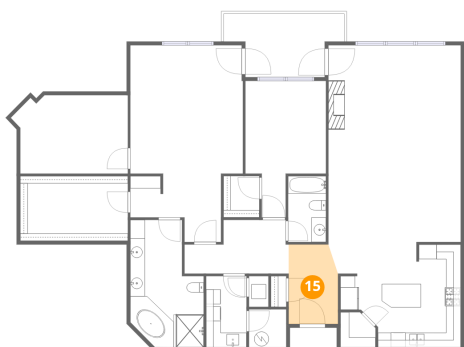


Dimensions: 18'0" x 16'4"
Area: 295 sq. ft
Counted as living area: Yes

Heated: Yes
Finished: Yes
Enclosed: Yes
Contiguous: Yes
Permitted: Yes
Wet space: No
Addition: No
Conversion: No

5452 The Peaks Dr, Cave Spring, Roanoke, Roanoke County, Virginia, United States, 24018

15 Floor 1 - Foyer



Dimensions: 6'9" x 10'10"
Area: 73 sq. ft
Counted as living area: Yes

Heated: Yes
Finished: Yes
Enclosed: Yes
Contiguous: Yes
Permitted: Yes
Wet space: No
Addition: No
Conversion: No

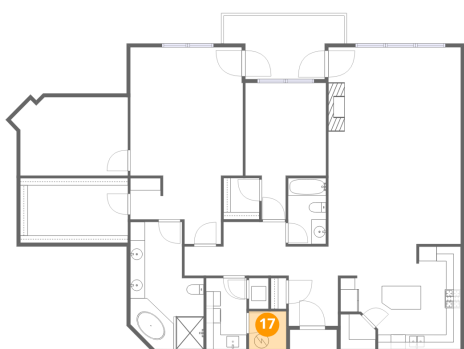
16 Floor 1 - Primary Bath



Dimensions: 10'0" x 17'4"
Area: 173 sq. ft
Counted as living area: Yes

Heated: Yes
Finished: Yes
Enclosed: Yes
Contiguous: Yes
Permitted: Yes
Wet space: Yes
Addition: No
Conversion: No

17 Floor 1 - Utility



Dimensions: 5'1" x 5'2"
Area: 26 sq. ft
Counted as living area: No

Heated: Yes
Finished: No
Enclosed: Yes
Contiguous: Yes
Permitted: Yes
Wet space: No
Addition: No
Conversion: No