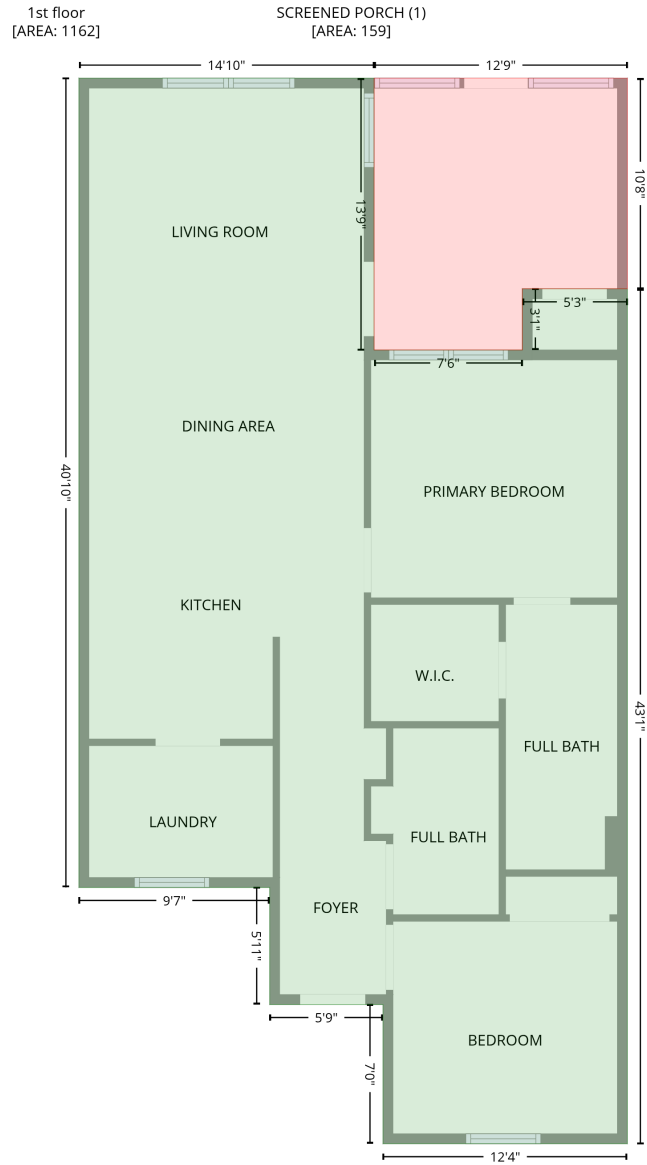


1520 28th St Ln SE, Newton, NC, US

Gross Living Area: 1162 sq. ft

Level 1



Space	Area (sq. ft)	Calculation
1st floor (Living area)	1162	Coordinate Polygon Area Algorithm using inches $-((211.4 + 211.4) * (-3.2 - 161.3) + (211.4 + 301.1) * (161.3 - 161.3) + (301.1 + 301.1) * (161.3 - 124.3) + (301.1 + 364.6) * (124.3 - 124.3) + (364.6 + 364.6) * (124.3 - 641.7) + (364.6 + 216.8) * (641.7 - 641.7) + (216.8 + 216.8) * (641.7 - 557.5) + (216.8 + 148.3) * (557.5 - 557.5) + (148.3 + 148.3) * (557.5 - 486.6) + (148.3 + 33) * (486.6 - 486.6) + (33 + 33) * (486.6 - -3.2) + (33 + 211.4) * (-3.2 - -3.2)) * 0.5 * 0.00694$

1520 28th St Ln SE,Newton,NC,US

Gross Living Area: 1162 sq. ft

Level 1

Space	Area (sq. ft)	Calculation <small>Coordinate Polygon Area Algorithm using inches</small>
SCREENED PORCH (Non-living area)	159	$-\left((364.6 + 364.6) * (-3.2 - 124.3) + (364.6 + 301.1) * (124.3 - 124.3) + (301.1 + 301.1) * (124.3 - 161.3) + (301.1 + 211.4) * (161.3 - 161.3) + (211.4 + 211.4) * (161.3 - -3.2) + (211.4 + 364.6) * (-3.2 - -3.2)\right) * 0.5 * 0.00694$