

## Home data report

**1 Pettine Street, Coventry, Kent County, Rhode Island, United States, 02816**




**Total Area: 1467 sq. ft**

1st Floor: 516 sq. ft, 2nd Floor: 425 sq. ft, 3rd Floor: 526 sq. ft

Excluded: Garage 252 sq. ft, Utility 155 sq. ft, Walls: 168 sq. ft

## Property summary

 **3** Floors

 **3** Bedrooms

 **1** Bathrooms

Home data report

**1 Pettine Street, Coventry, Kent County, Rhode Island, United States, 02816**

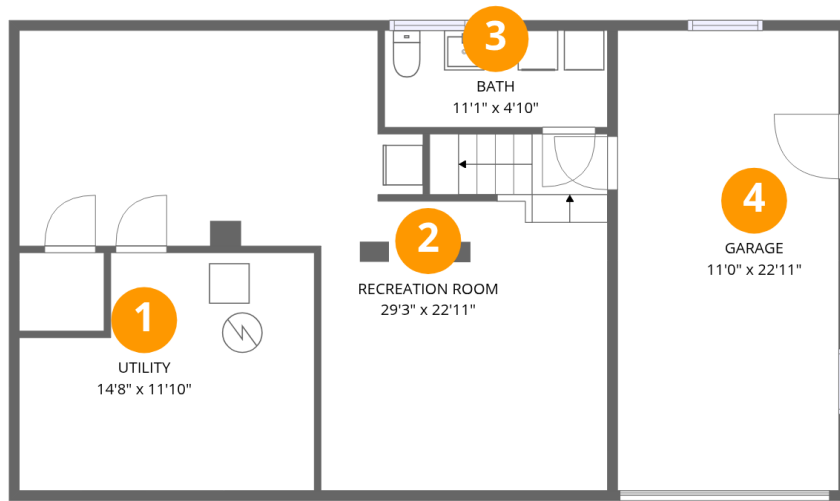


**1**  
Half baths



**1**  
Garages

# 1 Pettine Street, Coventry, Kent County, Rhode Island, United States, 02816



## Room dimensions

Floor 1

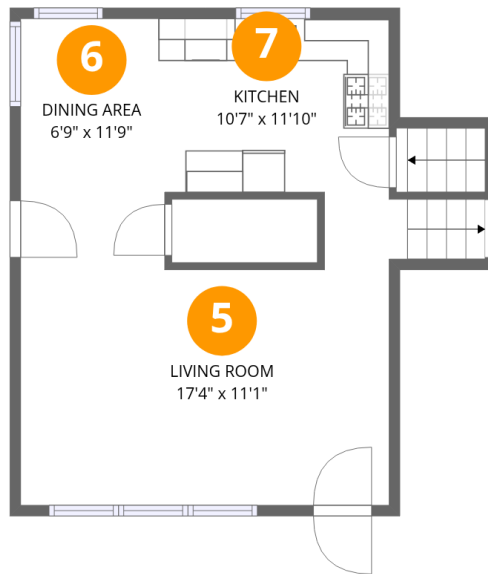
Total:516sqft

Excluded: 407sqft

#		Dimensions	sqft	Counted as living area
1	Utility	14'8" x 11'10"	174 sq. ft	No
2	Recreation Room	29'3" x 22'11"	670 sq. ft	Yes
3	Bath	11'1" x 4'10"	53 sq. ft	Yes
4	Garage	11'0" x 22'11"	252 sq. ft	No

Home data report

# 1 Pettine Street, Coventry, Kent County, Rhode Island, United States, 02816



## Room dimensions

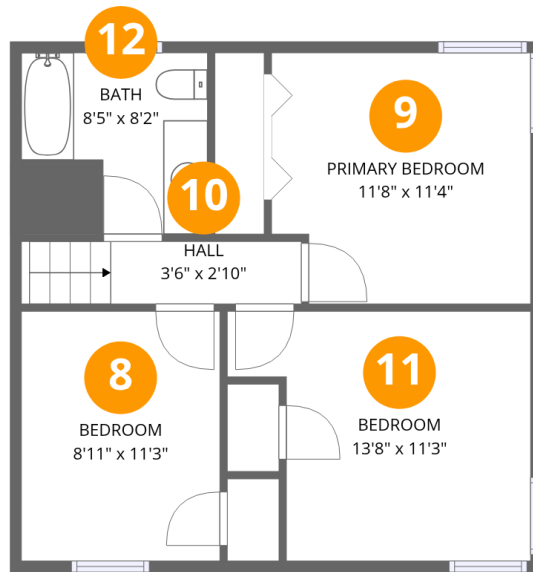
Floor 2

Total:425sqft Excluded: 0sqft

#		Dimensions	sqft	Counted as living area
5	Living Room	17'4" x 11'1"	192 sq. ft	Yes
6	Dining Area	6'9" x 11'9"	80 sq. ft	Yes
7	Kitchen	10'7" x 11'10"	125 sq. ft	Yes

Home data report

1 Pettine Street, Coventry, Kent County, Rhode Island, United States, 02816



## Room dimensions

Floor 3

Total:526sqft

Excluded: 0sqft

#		Dimensions	sqft	Counted as living area
8	Bedroom	8'11" x 11'3"	101 sq. ft	Yes
9	Primary Bedroom	11'8" x 11'4"	132 sq. ft	Yes
10	Hall	3'6" x 2'10"	10 sq. ft	Yes
11	Bedroom	13'8" x 11'3"	154 sq. ft	Yes
12	Bath	8'5" x 8'2"	68 sq. ft	Yes

**1 Pettine Street, Coventry, Kent County, Rhode Island, United States, 02816**

**1 Floor 1 - Utility**

---



**Dimensions:** 14'8" x 11'10"  
**Area:** 174 sq. ft  
**Counted as living area:** No

**Heated:** Yes  
**Finished:** No  
**Enclosed:** Yes  
**Contiguous:** Yes  
**Permitted:** Yes  
**Wet space:** No  
**Addition:** No  
**Conversion:** No

**2 Floor 1 - Recreation Room**

---

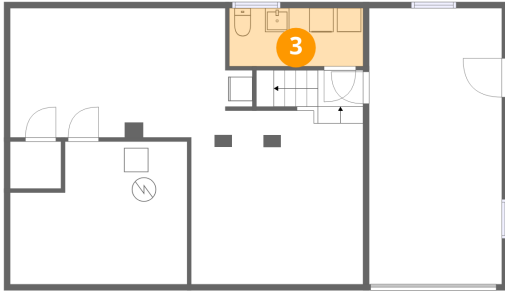


**Dimensions:** 29'3" x 22'11"  
**Area:** 670 sq. ft  
**Counted as living area:** Yes

**Heated:** Yes  
**Finished:** Yes  
**Enclosed:** Yes  
**Contiguous:** Yes  
**Permitted:** Yes  
**Wet space:** No  
**Addition:** No  
**Conversion:** No

1 Pettine Street, Coventry, Kent County, Rhode Island, United States, 02816

**3** Floor 1 - Bath



Dimensions: 11'1" x 4'10"  
Area: 53 sq. ft  
Counted as living area: Yes

Heated: Yes  
Finished: Yes  
Enclosed: Yes  
Contiguous: Yes  
Permitted: Yes  
Wet space: Yes  
Addition: No  
Conversion: No

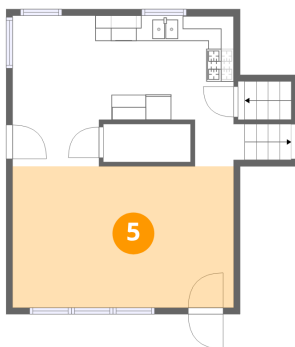
**4** Floor 1 - Garage



Dimensions: 11'0" x 22'11"  
Area: 252 sq. ft  
Counted as living area: No

Heated: No  
Finished: No  
Enclosed: Yes  
Contiguous: Yes  
Permitted: Yes  
Wet space: No  
Addition: No  
Conversion: No

**5** Floor 2 - Living Room



Dimensions: 17'4" x 11'1"  
Area: 192 sq. ft  
Counted as living area: Yes

Heated: Yes  
Finished: Yes  
Enclosed: Yes  
Contiguous: Yes  
Permitted: Yes  
Wet space: No  
Addition: No  
Conversion: No

# 1 Pettine Street, Coventry, Kent County, Rhode Island, United States, 02816

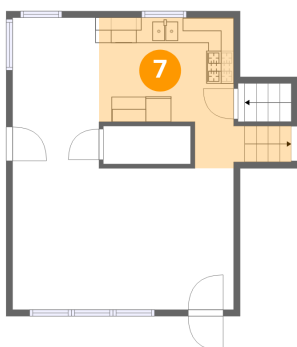
## 6 Floor 2 - Dining Area



Dimensions: 6'9" x 11'9"  
Area: 80 sq. ft  
Counted as living area: Yes

Heated: Yes  
Finished: Yes  
Enclosed: Yes  
Contiguous: Yes  
Permitted: Yes  
Wet space: No  
Addition: No  
Conversion: No

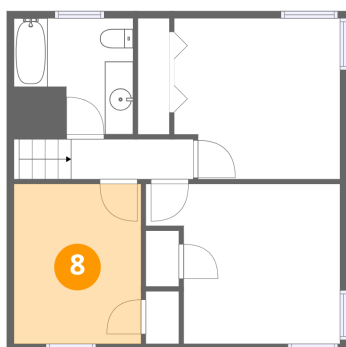
## 7 Floor 2 - Kitchen



Dimensions: 10'7" x 11'10"  
Area: 125 sq. ft  
Counted as living area: Yes

Heated: Yes  
Finished: Yes  
Enclosed: Yes  
Contiguous: Yes  
Permitted: Yes  
Wet space: No  
Addition: No  
Conversion: No

## 8 Floor 3 - Bedroom

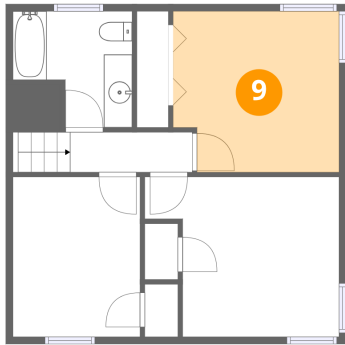


Dimensions: 8'11" x 11'3"  
Area: 101 sq. ft  
Counted as living area: Yes

Heated: Yes  
Finished: Yes  
Enclosed: Yes  
Contiguous: Yes  
Permitted: Yes  
Wet space: No  
Addition: No  
Conversion: No

1 Pettine Street, Coventry, Kent County, Rhode Island, United States, 02816

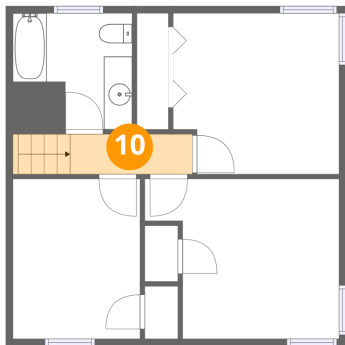
**9** Floor 3 - Primary Bedroom



Dimensions: 11'8" x 11'4"  
Area: 132 sq. ft  
Counted as living area: Yes

Heated: Yes  
Finished: Yes  
Enclosed: Yes  
Contiguous: Yes  
Permitted: Yes  
Wet space: No  
Addition: No  
Conversion: No

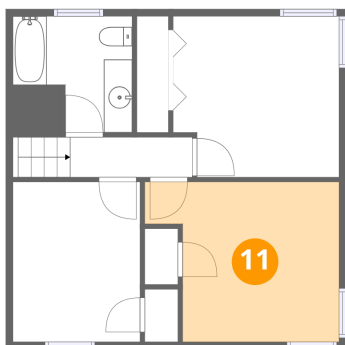
**10** Floor 3 - Hall



Dimensions: 3'6" x 2'10"  
Area: 10 sq. ft  
Counted as living area: Yes

Heated: Yes  
Finished: Yes  
Enclosed: Yes  
Contiguous: Yes  
Permitted: Yes  
Wet space: No  
Addition: No  
Conversion: No

**11** Floor 3 - Bedroom

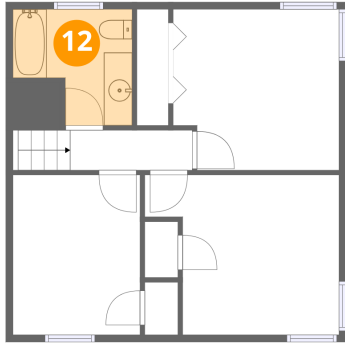


Dimensions: 13'8" x 11'3"  
Area: 154 sq. ft  
Counted as living area: Yes

Heated: Yes  
Finished: Yes  
Enclosed: Yes  
Contiguous: Yes  
Permitted: Yes  
Wet space: No  
Addition: No  
Conversion: No

**1 Pettine Street, Coventry, Kent County, Rhode Island, United States, 02816**

**12 Floor 3 - Bath**



**Dimensions:** 8'5" x 8'2"  
**Area:** 68 sq. ft  
**Counted as living area:** Yes

**Heated:** Yes  
**Finished:** Yes  
**Enclosed:** Yes  
**Contiguous:** Yes  
**Permitted:** Yes  
**Wet space:** Yes  
**Addition:** No  
**Conversion:** No