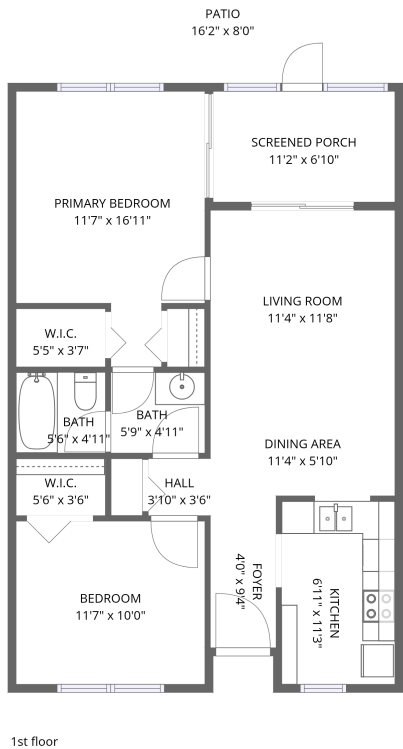


3353 Trophy Boulevard, Seven Springs, New Port Richey, Pasco County, Florida, United States, 34655




Total Area: 749 sq. ft


1st Floor: 749 sq. ft

Excluded: Screened porch 76 sq. ft, Patio 129 sq. ft, Walls: 72 sq. ft

Property summary

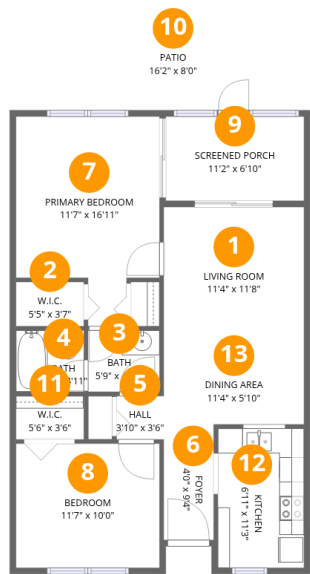
 1 Floors

 2 Bedrooms

 1 Bathrooms

Home data report

3353 Trophy Boulevard, Seven Springs, New Port Richey, Pasco County, Florida, United States, 34655



Room dimensions

Floor 1 Total:749sqft    Excluded: 205sqft

#		Dimensions	sqft	Counted as living area
1	Living Room	11'4" x 11'8"	132 sq. ft	Yes
2	W.I.C.	5'5" x 3'7"	19 sq. ft	Yes
3	Bath	5'9" x 4'11"	29 sq. ft	Yes
4	Bath	5'6" x 4'11"	27 sq. ft	Yes
5	Hall	3'10" x 3'6"	13 sq. ft	Yes
6	Foyer	4'0" x 9'4"	38 sq. ft	Yes
7	Primary Bedroom	11'7" x 16'11"	195 sq. ft	Yes
8	Bedroom	11'7" x 10'0"	116 sq. ft	Yes
9	Screened Porch	11'2" x 6'10"	76 sq. ft	No
10	Patio	16'2" x 8'0"	129 sq. ft	No
11	W.I.C.	5'6" x 3'6"	19 sq. ft	Yes

Home data report

3353 Trophy Boulevard, Seven Springs, New Port Richey, Pasco County, Florida, United States, 34655

#		Dimensions	sqft	Counted as living area
12	Kitchen	6'11" x 11'3"	78 sq. ft	Yes
13	Dining Area	11'4" x 5'10"	66 sq. ft	Yes

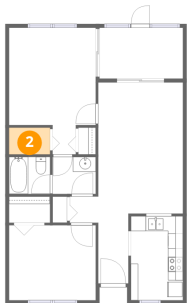
1 Floor 1 - Living Room



Dimensions: 11'4" x 11'8"  
Area: 132 sq. ft  
Counted as living area: Yes

Heated: Yes  
Finished: Yes  
Enclosed: Yes  
Contiguous: Yes  
Permitted: Yes  
Wet space: No  
Addition: No  
Conversion: No

2 Floor 1 - W.I.C.



Dimensions: 5'5" x 3'7"  
Area: 19 sq. ft  
Counted as living area: Yes

Heated: Yes  
Finished: Yes  
Enclosed: Yes  
Contiguous: Yes  
Permitted: Yes  
Wet space: No  
Addition: No  
Conversion: No

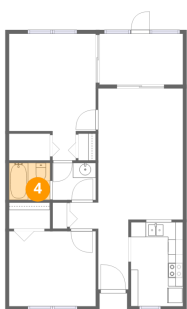
3 Floor 1 - Bath



Dimensions: 5'9" x 4'11"  
Area: 29 sq. ft  
Counted as living area: Yes

Heated: Yes  
Finished: Yes  
Enclosed: Yes  
Contiguous: Yes  
Permitted: Yes  
Wet space: Yes  
Addition: No  
Conversion: No

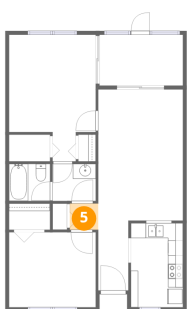
4 Floor 1 - Bath



Dimensions: 5'6" x 4'11"  
Area: 27 sq. ft  
Counted as living area: Yes

Heated: Yes  
Finished: Yes  
Enclosed: Yes  
Contiguous: Yes  
Permitted: Yes  
Wet space: Yes  
Addition: No  
Conversion: No

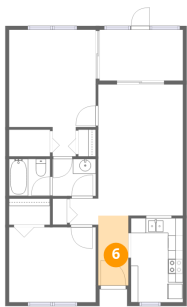
5 Floor 1 - Hall



Dimensions: 3'10" x 3'6"  
Area: 13 sq. ft  
Counted as living area: Yes

Heated: Yes  
Finished: Yes  
Enclosed: Yes  
Contiguous: Yes  
Permitted: Yes  
Wet space: No  
Addition: No  
Conversion: No

6 Floor 1 - Foyer



Dimensions: 4'0" x 9'4"  
Area: 38 sq. ft  
Counted as living area: Yes

Heated: Yes  
Finished: Yes  
Enclosed: Yes  
Contiguous: Yes  
Permitted: Yes  
Wet space: No  
Addition: No  
Conversion: No

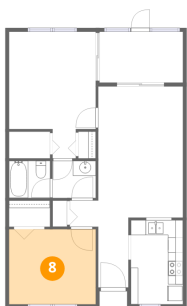
7 Floor 1 - Primary Bedroom



Dimensions: 11'7" x 16'11"  
Area: 195 sq. ft  
Counted as living area: Yes

Heated: Yes  
Finished: Yes  
Enclosed: Yes  
Contiguous: Yes  
Permitted: Yes  
Wet space: No  
Addition: No  
Conversion: No

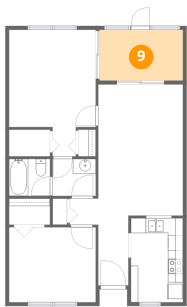
8 Floor 1 - Bedroom



Dimensions: 11'7" x 10'0"  
Area: 116 sq. ft  
Counted as living area: Yes

Heated: Yes  
Finished: Yes  
Enclosed: Yes  
Contiguous: Yes  
Permitted: Yes  
Wet space: No  
Addition: No  
Conversion: No

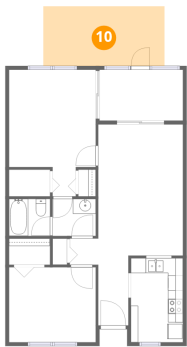
9 Floor 1 - Screened Porch



Dimensions: 11'2" x 6'10"  
Area: 76 sq. ft  
Counted as living area: No

Heated: No  
Finished: No  
Enclosed: No  
Contiguous: Yes  
Permitted: Yes  
Wet space: No  
Addition: No  
Conversion: No

10 Floor 1 - Patio



Dimensions: 16'2" x 8'0"  
Area: 129 sq. ft  
Counted as living area: No

Heated: No  
Finished: No  
Enclosed: No  
Contiguous: Yes  
Permitted: Yes  
Wet space: No  
Addition: No  
Conversion: No

11 Floor 1 - W.I.C.



Dimensions: 5'6" x 3'6"  
Area: 19 sq. ft  
Counted as living area: Yes

Heated: Yes  
Finished: Yes  
Enclosed: Yes  
Contiguous: Yes  
Permitted: Yes  
Wet space: No  
Addition: No  
Conversion: No

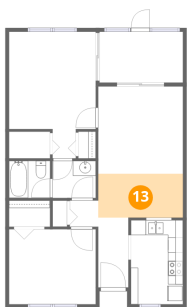
12 Floor 1 - Kitchen



Dimensions: 6'11" x 11'3"  
Area: 78 sq. ft  
Counted as living area: Yes

Heated: Yes  
Finished: Yes  
Enclosed: Yes  
Contiguous: Yes  
Permitted: Yes  
Wet space: No  
Addition: No  
Conversion: No

13 Floor 1 - Dining Area



Dimensions: 11'4" x 5'10"  
Area: 66 sq. ft  
Counted as living area: Yes

Heated: Yes  
Finished: Yes  
Enclosed: Yes  
Contiguous: Yes  
Permitted: Yes  
Wet space: No  
Addition: No  
Conversion: No