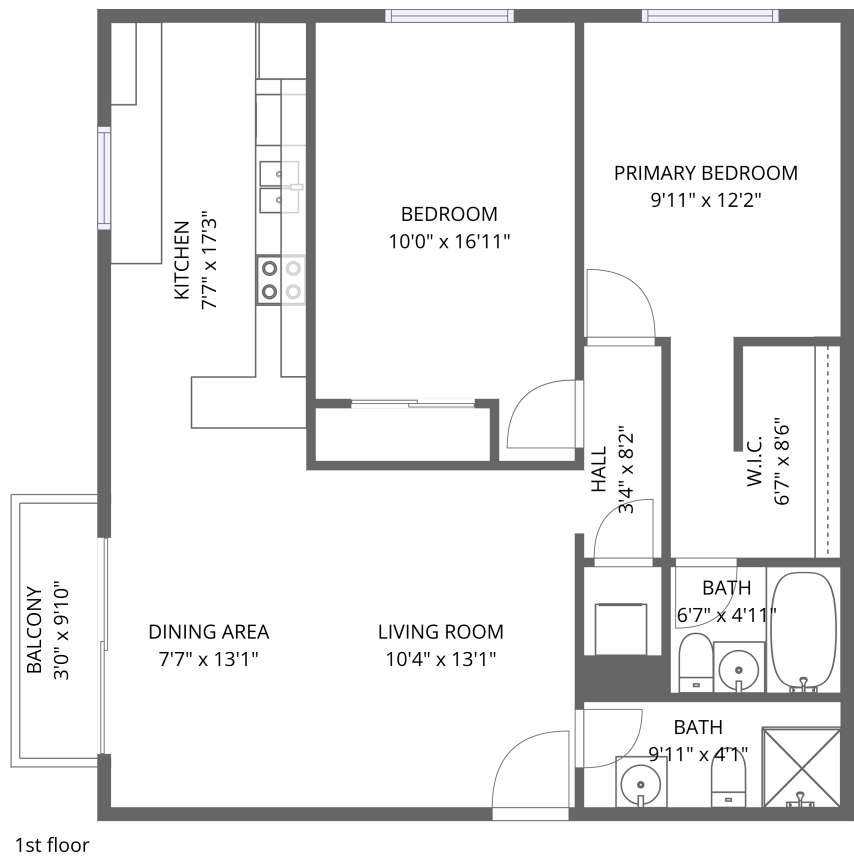


1245 Columbine Street, Congress Park, Denver, Denver County, Colorado, United States, 80206, 207




Total Area: 856 sq. ft

1st Floor: 856 sq. ft

Excluded: Balcony 30 sq. ft, Walls: 0 sq. ft

Property summary

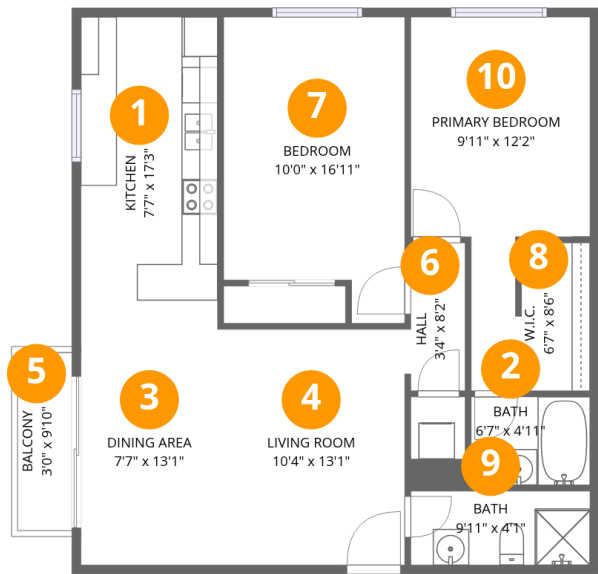
 1 Floors

 2 Bedrooms

 2 Bathrooms

Home data report

1245 Columbine Street, Congress Park, Denver, Denver County, Colorado, United States, 80206, 207



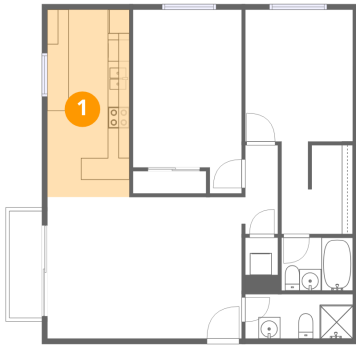
Room dimensions

Floor 1 Total:856sqft Excluded: 30sqft

#		Dimensions	sqft	Counted as living area
1	Kitchen	7'7" x 17'3"	131 sq. ft	Yes
2	Bath	6'7" x 4'11"	32 sq. ft	Yes
3	Dining Area	7'7" x 13'1"	99 sq. ft	Yes
4	Living Room	10'4" x 13'1"	135 sq. ft	Yes
5	Balcony	3'0" x 9'10"	29 sq. ft	No
6	Hall	3'4" x 8'2"	27 sq. ft	Yes
7	Bedroom	10'0" x 16'11"	170 sq. ft	Yes
8	W.I.C.	6'7" x 8'6"	56 sq. ft	Yes
9	Bath	9'11" x 4'1"	41 sq. ft	Yes
10	Primary Bedroom	9'11" x 12'2"	121 sq. ft	Yes

1245 Columbine Street, Congress Park, Denver, Denver County,
Colorado, United States, 80206, 207

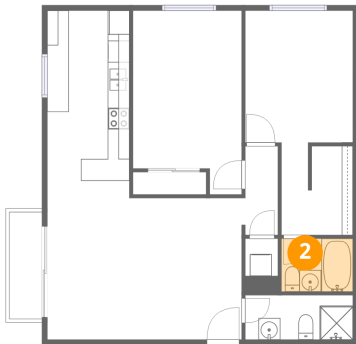
1 Floor 1 - Kitchen



Dimensions: 7'7" x 17'3"
Area: 131 sq. ft
Counted as living area: Yes

Heated: Yes
Finished: Yes
Enclosed: Yes
Contiguous: Yes
Permitted: Yes
Wet space: No
Addition: No
Conversion: No

2 Floor 1 - Bath

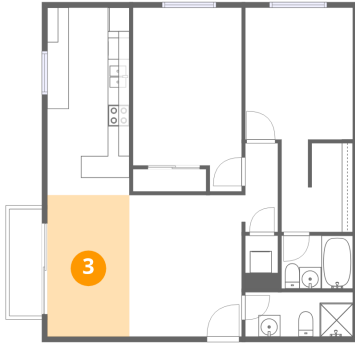


Dimensions: 6'7" x 4'11"
Area: 32 sq. ft
Counted as living area: Yes

Heated: Yes
Finished: Yes
Enclosed: Yes
Contiguous: Yes
Permitted: Yes
Wet space: Yes
Addition: No
Conversion: No

1245 Columbine Street, Congress Park, Denver, Denver County,
Colorado, United States, 80206, 207

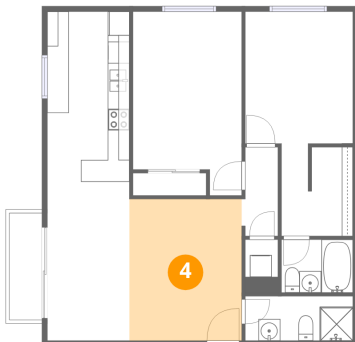
3 Floor 1 - Dining Area



Dimensions: 7'7" x 13'1"
Area: 99 sq. ft
Counted as living area: Yes

Heated: Yes
Finished: Yes
Enclosed: Yes
Contiguous: Yes
Permitted: Yes
Wet space: No
Addition: No
Conversion: No

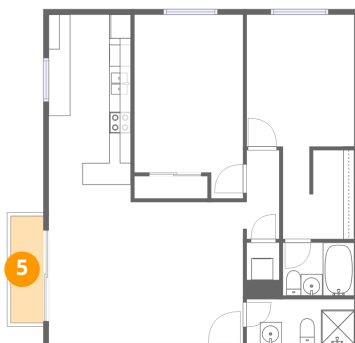
4 Floor 1 - Living Room



Dimensions: 10'4" x 13'1"
Area: 135 sq. ft
Counted as living area: Yes

Heated: Yes
Finished: Yes
Enclosed: Yes
Contiguous: Yes
Permitted: Yes
Wet space: No
Addition: No
Conversion: No

5 Floor 1 - Balcony

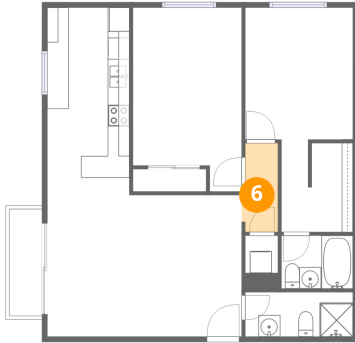


Dimensions: 3'0" x 9'10"
Area: 29 sq. ft
Counted as living area: No

Heated: No
Finished: No
Enclosed: No
Contiguous: Yes
Permitted: Yes
Wet space: No
Addition: No
Conversion: No

1245 Columbine Street, Congress Park, Denver, Denver County,
Colorado, United States, 80206, 207

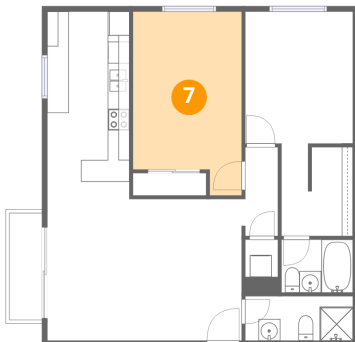
6 Floor 1 - Hall



Dimensions: 3'4" x 8'2"
Area: 27 sq. ft
Counted as living area: Yes

Heated: Yes
Finished: Yes
Enclosed: Yes
Contiguous: Yes
Permitted: Yes
Wet space: No
Addition: No
Conversion: No

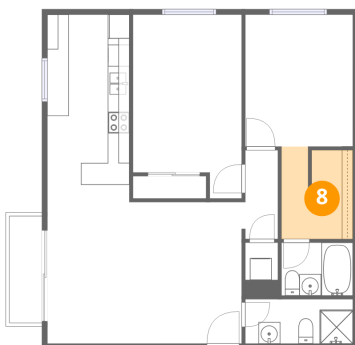
7 Floor 1 - Bedroom



Dimensions: 10'0" x 16'11"
Area: 170 sq. ft
Counted as living area: Yes

Heated: Yes
Finished: Yes
Enclosed: Yes
Contiguous: Yes
Permitted: Yes
Wet space: No
Addition: No
Conversion: No

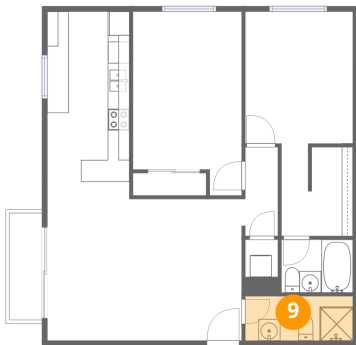
8 Floor 1 - W.I.C.



Dimensions: 6'7" x 8'6"
Area: 56 sq. ft
Counted as living area: Yes

Heated: Yes
Finished: Yes
Enclosed: Yes
Contiguous: Yes
Permitted: Yes
Wet space: No
Addition: No
Conversion: No

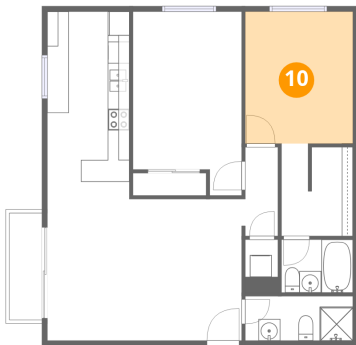
9 Floor 1 - Bath



Dimensions: 9'11" x 4'1"
Area: 41 sq. ft
Counted as living area: Yes

Heated: Yes
Finished: Yes
Enclosed: Yes
Contiguous: Yes
Permitted: Yes
Wet space: Yes
Addition: No
Conversion: No

10 Floor 1 - Primary Bedroom



Dimensions: 9'11" x 12'2"
Area: 121 sq. ft
Counted as living area: Yes

Heated: Yes
Finished: Yes
Enclosed: Yes
Contiguous: Yes
Permitted: Yes
Wet space: No
Addition: No
Conversion: No