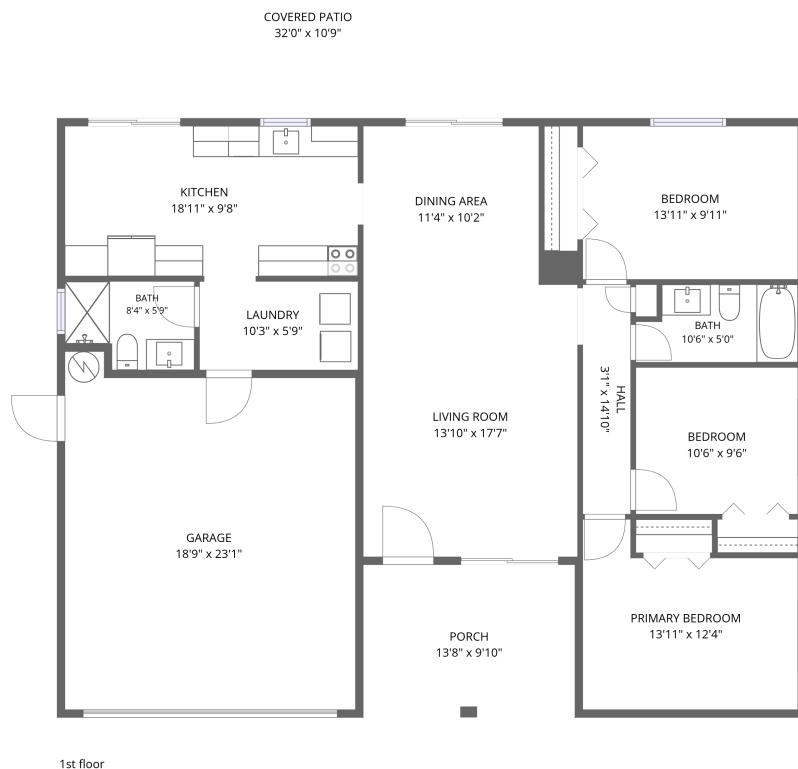


Home data report

150 Suncrest Drive, Willowick, Safety Harbor, Pinellas County, Florida, United States, 34695



Total Area: 1216 sq. ft

1st Floor: 1216 sq. ft

Excluded: Garage 406 sq. ft, Porch 135 sq. ft, Covered patio 347 sq. ft, Walls: 112 sq. ft

Property summary

 **1** Floors

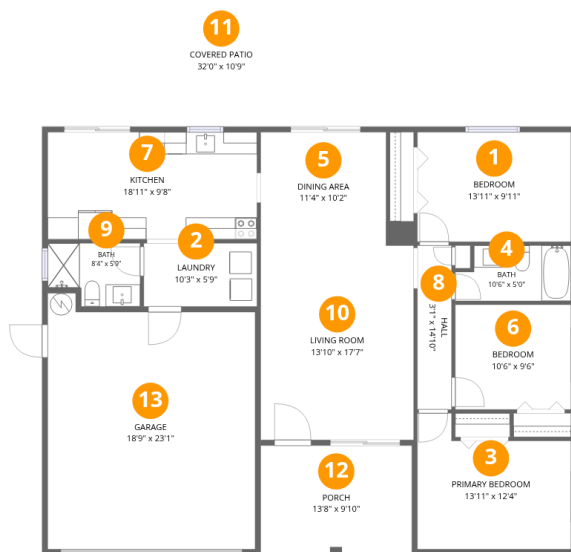
 **3** Bedrooms

 **2** Bathrooms

 **1** Garages

Home data report

150 Suncrest Drive, Willowick, Safety Harbor, Pinellas County, Florida, United States, 34695



Room dimensions

Floor 1

Total:1216sqft Excluded: 888sqft

#		Dimensions	sqft	Counted as living area
1	Bedroom	13'11" x 9'11"	138 sq. ft	Yes
2	Laundry	10'3" x 5'9"	59 sq. ft	Yes
3	Primary Bedroom	13'11" x 12'4"	144 sq. ft	Yes
4	Bath	10'6" x 5'0"	48 sq. ft	Yes
5	Dining Area	11'4" x 10'2"	116 sq. ft	Yes
6	Bedroom	10'6" x 9'6"	99 sq. ft	Yes
7	Kitchen	18'11" x 9'8"	184 sq. ft	Yes
8	Hall	3'1" x 14'10"	46 sq. ft	Yes
9	Bath	8'4" x 5'9"	43 sq. ft	Yes
10	Living Room	13'10" x 17'7"	243 sq. ft	Yes
11	Covered Patio	32'0" x 10'9"	347 sq. ft	No

Home data report

**150 Suncrest Drive, Willowick, Safety Harbor, Pinellas County,
Florida, United States, 34695**

#		Dimensions	sqft	Counted as living area
12	Porch	13'8" x 9'10"	135 sq. ft	No
13	Garage	18'9" x 23'1"	406 sq. ft	No

150 Suncrest Drive, Willowick, Safety Harbor, Pinellas County, Florida, United States, 34695

1 Floor 1 - Bedroom



Dimensions: 13'11" x 9'11"
Area: 138 sq. ft
Counted as living area: Yes

Heated: Yes
Finished: Yes
Enclosed: Yes
Contiguous: Yes
Permitted: Yes
Wet space: No
Addition: No
Conversion: No

2 Floor 1 - Laundry



Dimensions: 10'3" x 5'9"
Area: 59 sq. ft
Counted as living area: Yes

Heated: Yes
Finished: Yes
Enclosed: Yes
Contiguous: Yes
Permitted: Yes
Wet space: No
Addition: No
Conversion: No

150 Suncrest Drive, Willowick, Safety Harbor, Pinellas County, Florida, United States, 34695

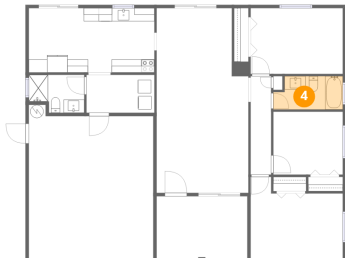
3 Floor 1 - Primary Bedroom



Dimensions: 13'11" x 12'4"
Area: 144 sq. ft
Counted as living area: Yes

Heated: Yes
Finished: Yes
Enclosed: Yes
Contiguous: Yes
Permitted: Yes
Wet space: No
Addition: No
Conversion: No

4 Floor 1 - Bath



Dimensions: 10'6" x 5'0"
Area: 48 sq. ft
Counted as living area: Yes

Heated: Yes
Finished: Yes
Enclosed: Yes
Contiguous: Yes
Permitted: Yes
Wet space: Yes
Addition: No
Conversion: No

5 Floor 1 - Dining Area



Dimensions: 11'4" x 10'2"
Area: 116 sq. ft
Counted as living area: Yes

Heated: Yes
Finished: Yes
Enclosed: Yes
Contiguous: Yes
Permitted: Yes
Wet space: No
Addition: No
Conversion: No

150 Suncrest Drive, Willowick, Safety Harbor, Pinellas County, Florida, United States, 34695

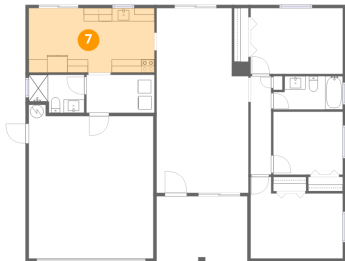
6 Floor 1 - Bedroom



Dimensions: 10'6" x 9'6"
Area: 99 sq. ft
Counted as living area: Yes

Heated: Yes
Finished: Yes
Enclosed: Yes
Contiguous: Yes
Permitted: Yes
Wet space: No
Addition: No
Conversion: No

7 Floor 1 - Kitchen



Dimensions: 18'11" x 9'8"
Area: 184 sq. ft
Counted as living area: Yes

Heated: Yes
Finished: Yes
Enclosed: Yes
Contiguous: Yes
Permitted: Yes
Wet space: No
Addition: No
Conversion: No

8 Floor 1 - Hall



Dimensions: 3'1" x 14'10"
Area: 46 sq. ft
Counted as living area: Yes

Heated: Yes
Finished: Yes
Enclosed: Yes
Contiguous: Yes
Permitted: Yes
Wet space: No
Addition: No
Conversion: No

150 Suncrest Drive, Willowick, Safety Harbor, Pinellas County, Florida, United States, 34695

9 Floor 1 - Bath



Dimensions: 8'4" x 5'9"
Area: 43 sq. ft
Counted as living area: Yes

Heated: Yes
Finished: Yes
Enclosed: Yes
Contiguous: Yes
Permitted: Yes
Wet space: Yes
Addition: No
Conversion: No

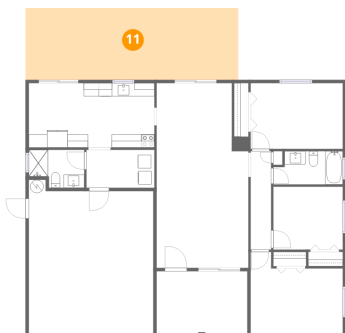
10 Floor 1 - Living Room



Dimensions: 13'10" x 17'7"
Area: 243 sq. ft
Counted as living area: Yes

Heated: Yes
Finished: Yes
Enclosed: Yes
Contiguous: Yes
Permitted: Yes
Wet space: No
Addition: No
Conversion: No

11 Floor 1 - Covered Patio

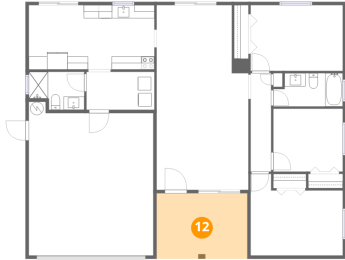


Dimensions: 32'0" x 10'9"
Area: 347 sq. ft
Counted as living area: No

Heated: No
Finished: No
Enclosed: No
Contiguous: Yes
Permitted: Yes
Wet space: No
Addition: No
Conversion: No

150 Suncrest Drive, Willowick, Safety Harbor, Pinellas County, Florida, United States, 34695

12 Floor 1 - Porch



Dimensions: 13'8" x 9'10"
Area: 135 sq. ft
Counted as living area: No

Heated: No
Finished: No
Enclosed: No
Contiguous: Yes
Permitted: Yes
Wet space: No
Addition: No
Conversion: No

13 Floor 1 - Garage



Dimensions: 18'9" x 23'1"
Area: 406 sq. ft
Counted as living area: No

Heated: No
Finished: No
Enclosed: Yes
Contiguous: Yes
Permitted: Yes
Wet space: No
Addition: No
Conversion: No