

Home data report

124 Riverway Lane, New Market, Madison County, Alabama,
United States, 35761



Total Area: 3133 sq. ft

1st Floor: 2294 sq. ft, 2nd Floor: 839 sq. ft

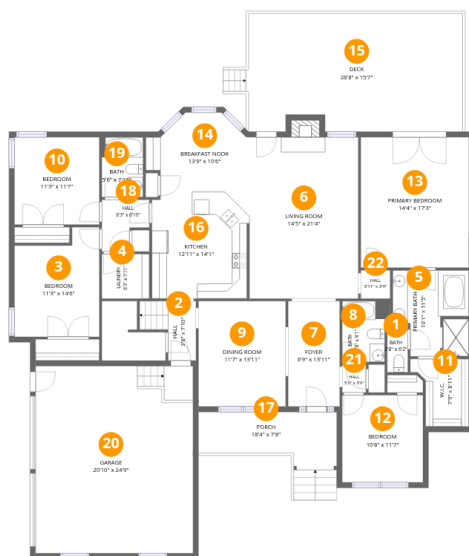
Excluded: Garage 565 sq. ft, Porch 135 sq. ft, Deck 441 sq. ft, Fireplace 12 sq. ft, Attic 106 sq. ft

Property summary



Home data report

124 Riverway Lane, New Market, Madison County, Alabama, United States, 35761



Room dimensions

Floor 1

Total:2294sqft

Excluded: 1153sqft

#		Dimensions	sqft	Counted as living area
1	Bath	2'8" x 6'2"	17 sq. ft	Yes
2	Hall	3'8" x 7'10"	43 sq. ft	Yes
3	Bedroom	11'3" x 14'6"	144 sq. ft	Yes
4	Laundry	6'3" x 5'11"	37 sq. ft	Yes
5	Primary Bath	10'1" x 11'5"	103 sq. ft	Yes
6	Living Room	14'5" x 21'4"	316 sq. ft	Yes
7	Foyer	6'9" x 13'11"	95 sq. ft	Yes
8	Bath	5'8" x 8'1"	47 sq. ft	Yes
9	Dining Room	11'7" x 13'11"	161 sq. ft	Yes
10	Bedroom	11'3" x 11'7"	130 sq. ft	Yes
11	W.I.C.	7'9" x 8'11"	56 sq. ft	Yes

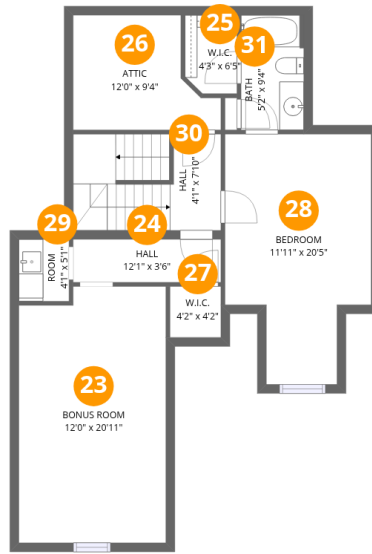
Home data report

**124 Riverway Lane, New Market, Madison County, Alabama,
United States, 35761**

#		Dimensions	sqft	Counted as living area
12	Bedroom	10'8" x 11'7"	123 sq. ft	Yes
13	Primary Bedroom	14'4" x 17'3"	247 sq. ft	Yes
14	Breakfast Nook	13'9" x 10'6"	120 sq. ft	Yes
15	Deck	28'8" x 15'7"	441 sq. ft	No
16	Kitchen	12'11" x 14'1"	178 sq. ft	Yes
17	Porch	18'4" x 7'8"	135 sq. ft	No
18	Hall	6'3" x 6'10"	35 sq. ft	Yes
19	Bath	5'6" x 7'11"	43 sq. ft	Yes
20	Garage	20'10" x 24'9"	516 sq. ft	No
21	Hall	3'2" x 3'9"	12 sq. ft	Yes
22	Hall	3'11" x 3'9"	15 sq. ft	Yes

Home data report

124 Riverway Lane, New Market, Madison County, Alabama,
United States, 35761



Room dimensions

Floor 2

Total:839sqft

Excluded: 106sqft

#		Dimensions	sqft	Counted as living area
23	Bonus Room	12'0" x 20'11"	244 sq. ft	Yes
24	Hall	12'1" x 3'6"	42 sq. ft	Yes
25	W.I.C.	4'3" x 6'5"	26 sq. ft	Yes
26	Attic	12'0" x 9'4"	92 sq. ft	No
27	W.I.C.	4'2" x 4'2"	17 sq. ft	Yes
28	Bedroom	11'11" x 20'5"	204 sq. ft	Yes
29	Room	4'1" x 5'1"	21 sq. ft	Yes
30	Hall	4'1" x 7'10"	92 sq. ft	Yes
31	Bath	5'2" x 9'4"	48 sq. ft	Yes

124 Riverway Lane, New Market, Madison County, Alabama,
United States, 35761

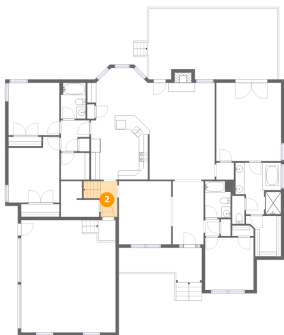
1 Floor 1 - Bath



Dimensions: 2'8" x 6'2"
Area: 17 sq. ft
Counted as living area: Yes

Heated: Yes
Finished: Yes
Enclosed: Yes
Contiguous: Yes
Permitted: Yes
Wet space: No
Addition: No
Conversion: No

2 Floor 1 - Hall



Dimensions: 3'8" x 7'10"
Area: 43 sq. ft
Counted as living area: Yes

Heated: Yes
Finished: Yes
Enclosed: Yes
Contiguous: Yes
Permitted: Yes
Wet space: No
Addition: No
Conversion: No

124 Riverway Lane, New Market, Madison County, Alabama,
United States, 35761

3 Floor 1 - Bedroom



Dimensions: 11'3" x 14'6"
Area: 144 sq. ft
Counted as living area: Yes

Heated: Yes
Finished: Yes
Enclosed: Yes
Contiguous: Yes
Permitted: Yes
Wet space: No
Addition: No
Conversion: No

4 Floor 1 - Laundry



Dimensions: 6'3" x 5'11"
Area: 37 sq. ft
Counted as living area: Yes

Heated: Yes
Finished: Yes
Enclosed: Yes
Contiguous: Yes
Permitted: Yes
Wet space: No
Addition: No
Conversion: No

5 Floor 1 - Primary Bath

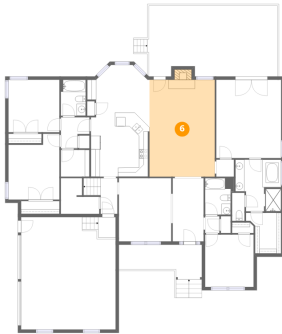


Dimensions: 10'1" x 11'5"
Area: 103 sq. ft
Counted as living area: Yes

Heated: Yes
Finished: Yes
Enclosed: Yes
Contiguous: Yes
Permitted: Yes
Wet space: Yes
Addition: No
Conversion: No

124 Riverway Lane, New Market, Madison County, Alabama,
United States, 35761

6 Floor 1 - Living Room



Dimensions: 14'5" x 21'4"
Area: 316 sq. ft
Counted as living area: Yes

Heated: Yes
Finished: Yes
Enclosed: Yes
Contiguous: Yes
Permitted: Yes
Wet space: No
Addition: No
Conversion: No

7 Floor 1 - Foyer



Dimensions: 6'9" x 13'11"
Area: 95 sq. ft
Counted as living area: Yes

Heated: Yes
Finished: Yes
Enclosed: Yes
Contiguous: Yes
Permitted: Yes
Wet space: No
Addition: No
Conversion: No

8 Floor 1 - Bath

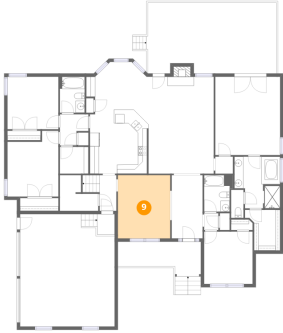


Dimensions: 5'8" x 8'1"
Area: 47 sq. ft
Counted as living area: Yes

Heated: Yes
Finished: Yes
Enclosed: Yes
Contiguous: Yes
Permitted: Yes
Wet space: Yes
Addition: No
Conversion: No

124 Riverway Lane, New Market, Madison County, Alabama,
United States, 35761

9 Floor 1 - Dining Room



Dimensions: 11'7" x 13'11"
Area: 161 sq. ft
Counted as living area: Yes

Heated: Yes
Finished: Yes
Enclosed: Yes
Contiguous: Yes
Permitted: Yes
Wet space: No
Addition: No
Conversion: No

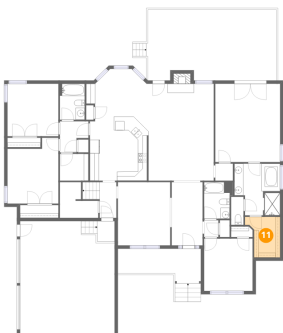
10 Floor 1 - Bedroom



Dimensions: 11'3" x 11'7"
Area: 130 sq. ft
Counted as living area: Yes

Heated: Yes
Finished: Yes
Enclosed: Yes
Contiguous: Yes
Permitted: Yes
Wet space: No
Addition: No
Conversion: No

11 Floor 1 - W.I.C.



Dimensions: 7'9" x 8'11"
Area: 56 sq. ft
Counted as living area: Yes

Heated: Yes
Finished: Yes
Enclosed: Yes
Contiguous: Yes
Permitted: Yes
Wet space: No
Addition: No
Conversion: No

124 Riverway Lane, New Market, Madison County, Alabama,
United States, 35761

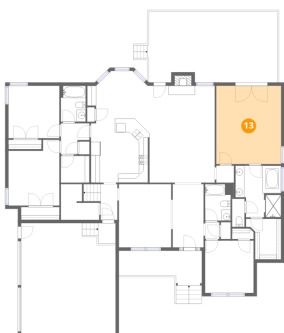
12 Floor 1 - Bedroom



Dimensions: 10'8" x 11'7"
Area: 123 sq. ft
Counted as living area: Yes

Heated: Yes
Finished: Yes
Enclosed: Yes
Contiguous: Yes
Permitted: Yes
Wet space: No
Addition: No
Conversion: No

13 Floor 1 - Primary Bedroom



Dimensions: 14'4" x 17'3"
Area: 247 sq. ft
Counted as living area: Yes

Heated: Yes
Finished: Yes
Enclosed: Yes
Contiguous: Yes
Permitted: Yes
Wet space: No
Addition: No
Conversion: No

14 Floor 1 - Breakfast Nook



Dimensions: 13'9" x 10'6"
Area: 120 sq. ft
Counted as living area: Yes

Heated: Yes
Finished: Yes
Enclosed: Yes
Contiguous: Yes
Permitted: Yes
Wet space: No
Addition: No
Conversion: No

124 Riverway Lane, New Market, Madison County, Alabama,
United States, 35761

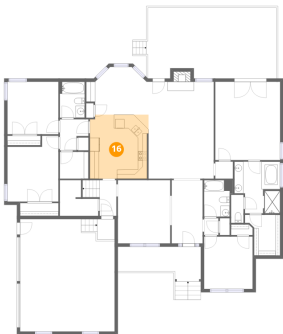
15 Floor 1 - Deck



Dimensions: 28'8" x 15'7"
Area: 441 sq. ft
Counted as living area: No

Heated: No
Finished: No
Enclosed: No
Contiguous: Yes
Permitted: Yes
Wet space: No
Addition: No
Conversion: No

16 Floor 1 - Kitchen



Dimensions: 12'11" x 14'1"
Area: 178 sq. ft
Counted as living area: Yes

Heated: Yes
Finished: Yes
Enclosed: Yes
Contiguous: Yes
Permitted: Yes
Wet space: No
Addition: No
Conversion: No

17 Floor 1 - Porch



Dimensions: 18'4" x 7'8"
Area: 135 sq. ft
Counted as living area: No

Heated: No
Finished: No
Enclosed: No
Contiguous: Yes
Permitted: Yes
Wet space: No
Addition: No
Conversion: No

124 Riverway Lane, New Market, Madison County, Alabama,
United States, 35761

18 Floor 1 - Hall



Dimensions: 6'3" x 6'10"
Area: 35 sq. ft
Counted as living area: Yes

Heated: Yes
Finished: Yes
Enclosed: Yes
Contiguous: Yes
Permitted: Yes
Wet space: No
Addition: No
Conversion: No

19 Floor 1 - Bath



Dimensions: 5'6" x 7'11"
Area: 43 sq. ft
Counted as living area: Yes

Heated: Yes
Finished: Yes
Enclosed: Yes
Contiguous: Yes
Permitted: Yes
Wet space: Yes
Addition: No
Conversion: No

20 Floor 1 - Garage



Dimensions: 20'10" x 24'9"
Area: 516 sq. ft
Counted as living area: No

Heated: No
Finished: No
Enclosed: Yes
Contiguous: Yes
Permitted: Yes
Wet space: No
Addition: No
Conversion: No

124 Riverway Lane, New Market, Madison County, Alabama,
United States, 35761

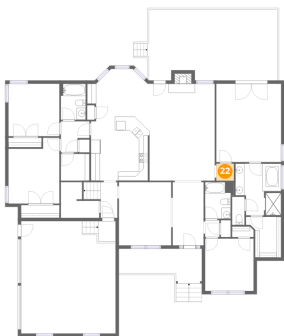
21 Floor 1 - Hall



Dimensions: 3'2" x 3'9"
Area: 12 sq. ft
Counted as living area: Yes

Heated: Yes
Finished: Yes
Enclosed: Yes
Contiguous: Yes
Permitted: Yes
Wet space: No
Addition: No
Conversion: No

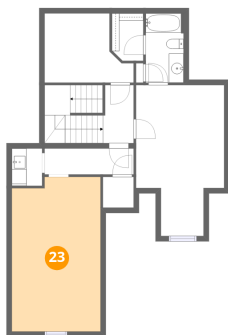
22 Floor 1 - Hall



Dimensions: 3'11" x 3'9"
Area: 15 sq. ft
Counted as living area: Yes

Heated: Yes
Finished: Yes
Enclosed: Yes
Contiguous: Yes
Permitted: Yes
Wet space: No
Addition: No
Conversion: No

23 Floor 2 - Bonus Room

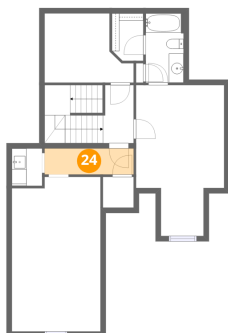


Dimensions: 12'0" x 20'11"
Area: 244 sq. ft
Counted as living area: Yes

Heated: Yes
Finished: Yes
Enclosed: Yes
Contiguous: Yes
Permitted: Yes
Wet space: No
Addition: No
Conversion: No

124 Riverway Lane, New Market, Madison County, Alabama,
United States, 35761

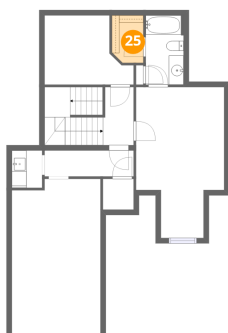
24 Floor 2 - Hall



Dimensions: 12'1" x 3'6"
Area: 42 sq. ft
Counted as living area: Yes

Heated: Yes
Finished: Yes
Enclosed: Yes
Contiguous: Yes
Permitted: Yes
Wet space: No
Addition: No
Conversion: No

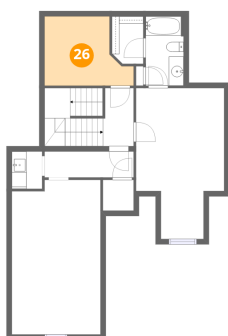
25 Floor 2 - W.I.C.



Dimensions: 4'3" x 6'5"
Area: 26 sq. ft
Counted as living area: Yes

Heated: Yes
Finished: Yes
Enclosed: Yes
Contiguous: Yes
Permitted: Yes
Wet space: No
Addition: No
Conversion: No

26 Floor 2 - Attic



Dimensions: 12'0" x 9'4"
Area: 92 sq. ft
Counted as living area: No

Heated: No
Finished: No
Enclosed: Yes
Contiguous: Yes
Permitted: Yes
Wet space: No
Addition: No
Conversion: No

124 Riverway Lane, New Market, Madison County, Alabama,
United States, 35761

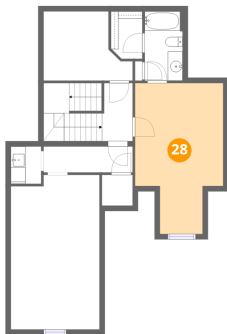
27 Floor 2 - W.I.C.



Dimensions: 4'2" x 4'2"
Area: 17 sq. ft
Counted as living area: Yes

Heated: Yes
Finished: Yes
Enclosed: Yes
Contiguous: Yes
Permitted: Yes
Wet space: No
Addition: No
Conversion: No

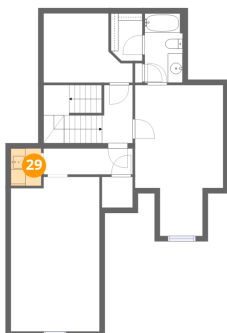
28 Floor 2 - Bedroom



Dimensions: 11'11" x 20'5"
Area: 204 sq. ft
Counted as living area: Yes

Heated: Yes
Finished: Yes
Enclosed: Yes
Contiguous: Yes
Permitted: Yes
Wet space: No
Addition: No
Conversion: No

29 Floor 2 - Room

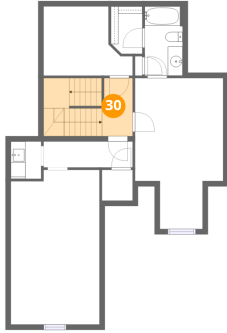


Dimensions: 4'1" x 5'1"
Area: 21 sq. ft
Counted as living area: Yes

Heated: Yes
Finished: Yes
Enclosed: Yes
Contiguous: Yes
Permitted: Yes
Wet space: No
Addition: No
Conversion: No

124 Riverway Lane, New Market, Madison County, Alabama,
United States, 35761

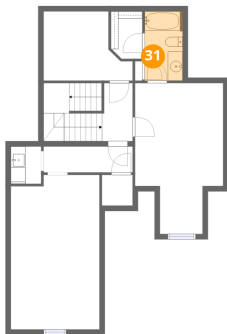
30 Floor 2 - Hall



Dimensions: 4'1" x 7'10"
Area: 92 sq. ft
Counted as living area: Yes

Heated: Yes
Finished: Yes
Enclosed: Yes
Contiguous: Yes
Permitted: Yes
Wet space: No
Addition: No
Conversion: No

31 Floor 2 - Bath



Dimensions: 5'2" x 9'4"
Area: 48 sq. ft
Counted as living area: Yes

Heated: Yes
Finished: Yes
Enclosed: Yes
Contiguous: Yes
Permitted: Yes
Wet space: Yes
Addition: No
Conversion: No