

Home data report

3915 Larose Crescent, Garden Hill, ON, CA




Total Area: 1857 sq. ft

Basement: 108 sq. ft, 1st Floor: 1749 sq. ft

Excluded: Basement 1634 sq. ft, Garage 550 sq. ft, Walls: 233 sq. ft

Property summary

 **2** Floors

 **3** Bedrooms

 **2** Bathrooms

Home data report

3915 Larose Crescent, Garden Hill, ON, CA

 **1**
Half baths

 **1**
Garages



Room dimensions

Floor 1 Below grade

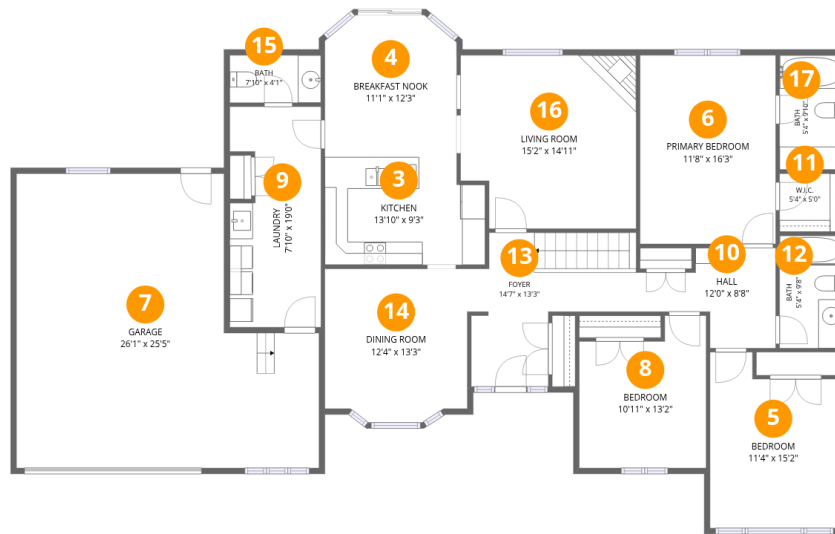
Total: 108sqft

Excluded: 1634sqft

#		Dimensions	sqft	Counted as living area
1	Office	8'10" x 9'0"	94 sq. ft	Yes
2	Basement	52'9" x 40'9"	1741 sq. ft	No

Home data report

3915 Larose Crescent, Garden Hill, ON, CA



Room dimensions

Floor 2

Total: 1749 sqft

Excluded: 550 sqft

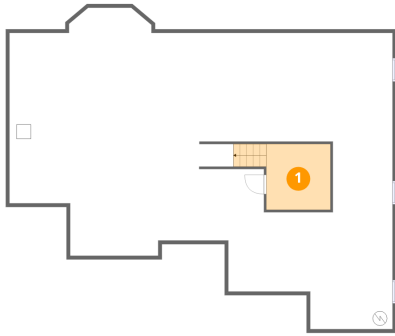
#		Dimensions	sqft	Counted as living area
3	Kitchen	13'10" x 9'3"	123 sq. ft	Yes
4	Breakfast Nook	11'1" x 12'3"	133 sq. ft	Yes
5	Bedroom	11'4" x 15'2"	154 sq. ft	Yes
6	Primary Bedroom	11'8" x 16'3"	190 sq. ft	Yes
7	Garage	26'1" x 25'5"	550 sq. ft	No
8	Bedroom	10'11" x 13'2"	128 sq. ft	Yes
9	Laundry	7'10" x 19'0"	140 sq. ft	Yes
10	Hall	12'0" x 8'8"	73 sq. ft	Yes
11	W.I.C.	5'4" x 5'0"	27 sq. ft	Yes
12	Bath	5'4" x 9'8"	52 sq. ft	Yes
13	Foyer	14'7" x 13'3"	136 sq. ft	Yes

Home data report

3915 Larose Crescent, Garden Hill, ON, CA

#		Dimensions	sqft	Counted as living area
14	Dining Room	12'4" x 13'3"	156 sq. ft	Yes
15	Bath	7'10" x 4'1"	32 sq. ft	Yes
16	Living Room	15'2" x 14'11"	217 sq. ft	Yes
17	Bath	5'4" x 9'10"	53 sq. ft	Yes

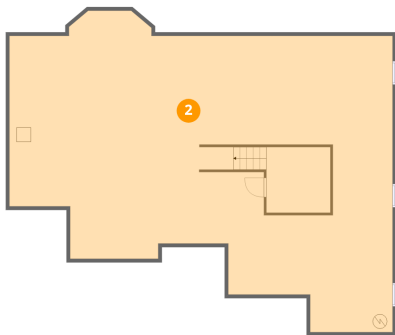
1 Floor 1 - Office



Dimensions: 8'10" x 9'0"
Area: 94 sq. ft
Counted as living area: No

Heated: Yes
Finished: Yes
Enclosed: Yes
Contiguous: No
Permitted: Yes
Wet space: No
Addition: No
Conversion: No

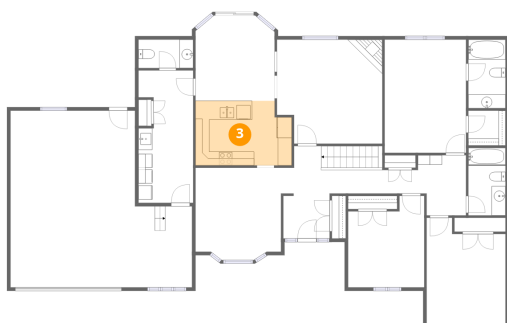
2 Floor 1 - Basement



Dimensions: 52'9" x 40'9"
Area: 1741 sq. ft
Counted as living area: No

Heated: Yes
Finished: No
Enclosed: Yes
Contiguous: Yes
Permitted: Yes
Wet space: No
Addition: No
Conversion: No

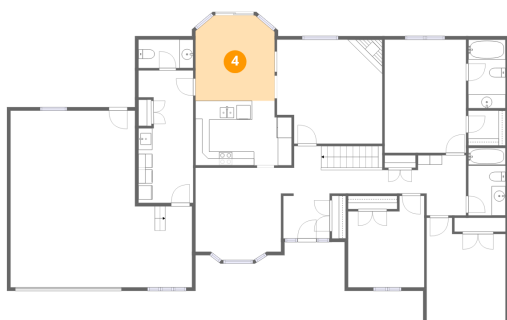
3 Floor 2 - Kitchen



Dimensions: 13'10" x 9'3"
Area: 123 sq. ft
Counted as living area: Yes

Heated: Yes
Finished: Yes
Enclosed: Yes
Contiguous: Yes
Permitted: Yes
Wet space: No
Addition: No
Conversion: No

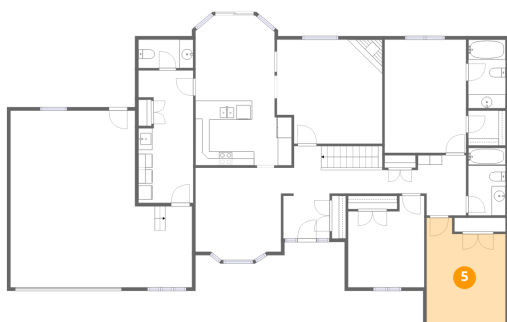
4 Floor 2 - Breakfast Nook



Dimensions: 11'1" x 12'3"
Area: 133 sq. ft
Counted as living area: Yes

Heated: Yes
Finished: Yes
Enclosed: Yes
Contiguous: Yes
Permitted: Yes
Wet space: No
Addition: No
Conversion: No

5 Floor 2 - Bedroom



Dimensions: 11'4" x 15'2"
Area: 154 sq. ft
Counted as living area: Yes

Heated: Yes
Finished: Yes
Enclosed: Yes
Contiguous: Yes
Permitted: Yes
Wet space: No
Addition: No
Conversion: No

6 Floor 2 - Primary Bedroom



Dimensions: 11'8" x 16'3"
Area: 190 sq. ft
Counted as living area: Yes

Heated: Yes
Finished: Yes
Enclosed: Yes
Contiguous: Yes
Permitted: Yes
Wet space: No
Addition: No
Conversion: No

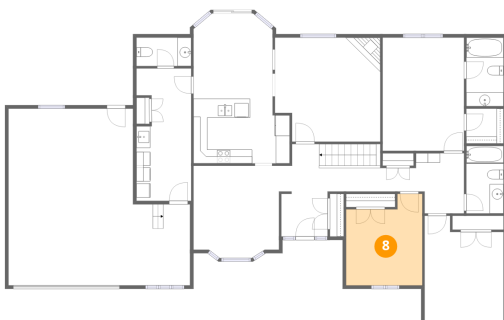
7 Floor 2 - Garage



Dimensions: 26'1" x 25'5"
Area: 550 sq. ft
Counted as living area: No

Heated: No
Finished: No
Enclosed: Yes
Contiguous: Yes
Permitted: Yes
Wet space: No
Addition: No
Conversion: No

8 Floor 2 - Bedroom



Dimensions: 10'11" x 13'2"
Area: 128 sq. ft
Counted as living area: Yes

Heated: Yes
Finished: Yes
Enclosed: Yes
Contiguous: Yes
Permitted: Yes
Wet space: No
Addition: No
Conversion: No

9 Floor 2 - Laundry



Dimensions: 7'10" x 19'0"
Area: 140 sq. ft
Counted as living area: Yes

Heated: Yes
Finished: Yes
Enclosed: Yes
Contiguous: Yes
Permitted: Yes
Wet space: No
Addition: No
Conversion: No

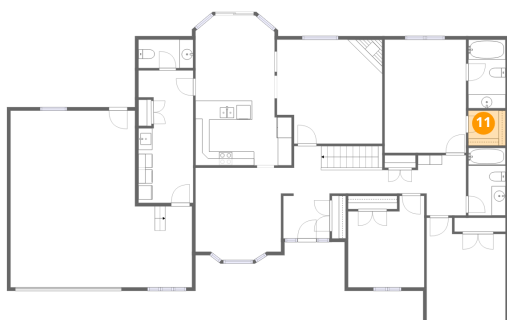
10 Floor 2 - Hall



Dimensions: 12'0" x 8'8"
Area: 73 sq. ft
Counted as living area: Yes

Heated: Yes
Finished: Yes
Enclosed: Yes
Contiguous: Yes
Permitted: Yes
Wet space: No
Addition: No
Conversion: No

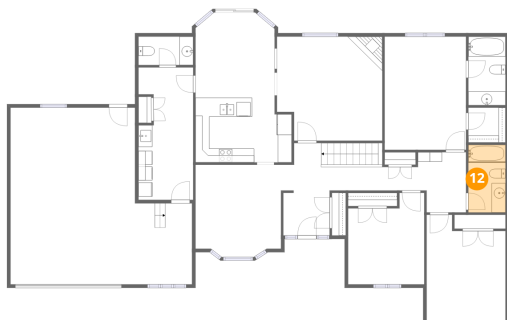
11 Floor 2 - W.I.C.



Dimensions: 5'4" x 5'0"
Area: 27 sq. ft
Counted as living area: Yes

Heated: Yes
Finished: Yes
Enclosed: Yes
Contiguous: Yes
Permitted: Yes
Wet space: No
Addition: No
Conversion: No

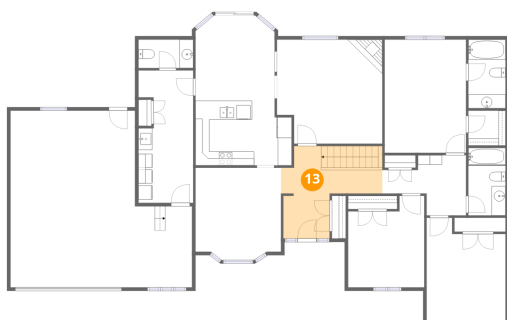
12 Floor 2 - Bath



Dimensions: 5'4" x 9'8"
Area: 52 sq. ft
Counted as living area: Yes

Heated: Yes
Finished: Yes
Enclosed: Yes
Contiguous: Yes
Permitted: Yes
Wet space: Yes
Addition: No
Conversion: No

13 Floor 2 - Foyer



Dimensions: 14'7" x 13'3"
Area: 136 sq. ft
Counted as living area: Yes

Heated: Yes
Finished: Yes
Enclosed: Yes
Contiguous: Yes
Permitted: Yes
Wet space: No
Addition: No
Conversion: No

14 Floor 2 - Dining Room



Dimensions: 12'4" x 13'3"
Area: 156 sq. ft
Counted as living area: Yes

Heated: Yes
Finished: Yes
Enclosed: Yes
Contiguous: Yes
Permitted: Yes
Wet space: No
Addition: No
Conversion: No

15 Floor 2 - Bath



Dimensions: 7'10" x 4'1"
Area: 32 sq. ft
Counted as living area: Yes

Heated: Yes
Finished: Yes
Enclosed: Yes
Contiguous: Yes
Permitted: Yes
Wet space: Yes
Addition: No
Conversion: No

16 Floor 2 - Living Room



Dimensions: 15'2" x 14'11"
Area: 217 sq. ft
Counted as living area: Yes

Heated: Yes
Finished: Yes
Enclosed: Yes
Contiguous: Yes
Permitted: Yes
Wet space: No
Addition: No
Conversion: No

17 Floor 2 - Bath



Dimensions: 5'4" x 9'10"
Area: 53 sq. ft
Counted as living area: Yes

Heated: Yes
Finished: Yes
Enclosed: Yes
Contiguous: Yes
Permitted: Yes
Wet space: Yes
Addition: No
Conversion: No