

## Home data report

14 Milestone Way, Hanover, Plymouth County, Massachusetts,  
United States, 02339



**Total Area: 1853 sq. ft**

Basement: 0 sq. ft, 1st Floor: 1342 sq. ft, 2nd Floor: 511 sq. ft

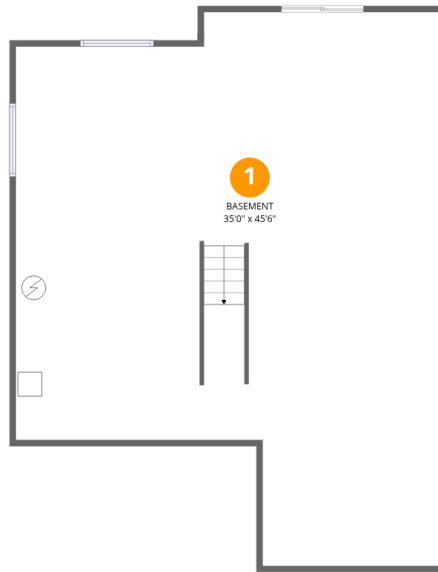
Excluded: Basement 1340 sq. ft, Balcony 170 sq. ft, Fireplace 13 sq. ft, Walls: 220 sq. ft

## Property summary



Home data report

**14 Milestone Way, Hanover, Plymouth County, Massachusetts,  
United States, 02339**



## Room dimensions

Floor 1 Below grade

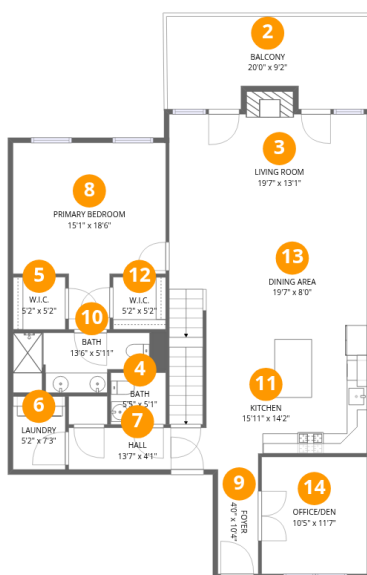
Total:0sqft

Excluded: 1340sqft

#		Dimensions	sqft	Counted as living area
1	Basement	35'0" x 45'6"	1591 sq. ft	No

## Home data report

**14 Milestone Way, Hanover, Plymouth County, Massachusetts,  
United States, 02339**



## Room dimensions

Floor 2

Total:1342sqft Excluded: 183sqft

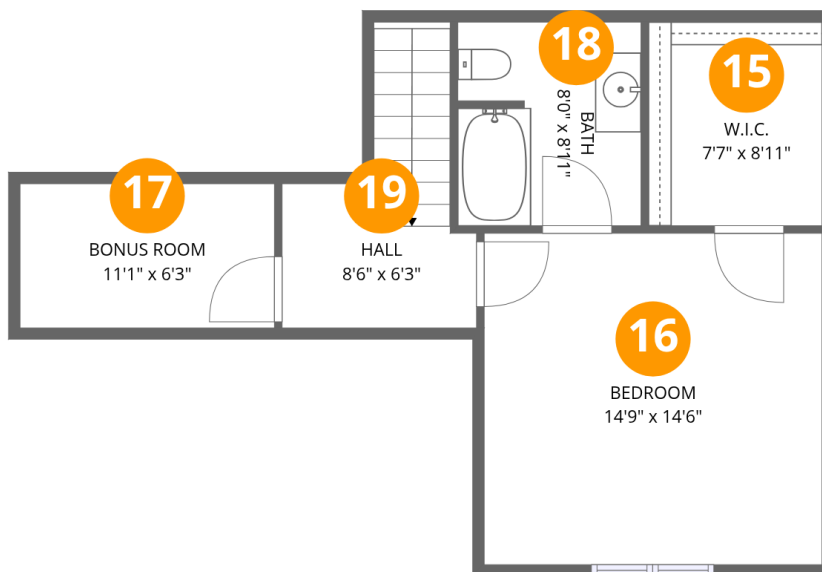
#		Dimensions	sqft	Counted as living area
2	Balcony	20'0" x 9'2"	183 sq. ft	No
3	Living Room	19'7" x 13'1"	256 sq. ft	Yes
4	Bath	5'5" x 5'1"	28 sq. ft	Yes
5	W.I.C.	5'2" x 5'2"	27 sq. ft	Yes
6	Laundry	5'2" x 7'3"	37 sq. ft	Yes
7	Hall	13'7" x 4'1"	55 sq. ft	Yes
8	Primary Bedroom	15'1" x 18'6"	278 sq. ft	Yes
9	Foyer	4'0" x 10'4"	41 sq. ft	Yes
10	Bath	13'6" x 5'11"	80 sq. ft	Yes
11	Kitchen	15'11" x 14'2"	225 sq. ft	Yes
12	W.I.C.	5'2" x 5'2"	27 sq. ft	Yes

Home data report

**14 Milestone Way, Hanover, Plymouth County, Massachusetts,  
United States, 02339**

#		Dimensions	sqft	Counted as living area
13	Dining Area	19'7" x 8'0"	156 sq. ft	Yes
14	Office/Den	10'5" x 11'7"	121 sq. ft	Yes

**14 Milestone Way, Hanover, Plymouth County, Massachusetts,  
United States, 02339**



**Room dimensions**

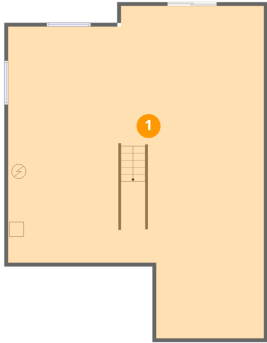
Floor 3

Total:511sqft Excluded: 0sqft

#		Dimensions	sqft	Counted as living area
15	W.I.C.	7'7" x 8'11"	67 sq. ft	Yes
16	Bedroom	14'9" x 14'6"	213 sq. ft	Yes
17	Bonus Room	11'1" x 6'3"	70 sq. ft	Yes
18	Bath	8'0" x 8'11"	71 sq. ft	Yes
19	Hall	8'6" x 6'3"	53 sq. ft	Yes

14 Milestone Way, Hanover, Plymouth County, Massachusetts,  
United States, 02339

## 1 Floor 1 - Basement



Dimensions: 35'0" x 45'6"  
Area: 1591 sq. ft  
Counted as living area: No

Heated: Yes  
Finished: No  
Enclosed: Yes  
Contiguous: Yes  
Permitted: Yes  
Wet space: No  
Addition: No  
Conversion: No

## 2 Floor 2 - Balcony



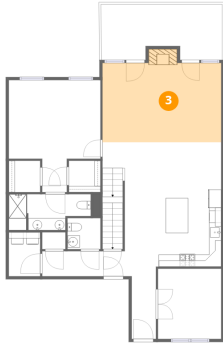
Dimensions: 20'0" x 9'2"  
Area: 183 sq. ft  
Counted as living area: No

Heated: No  
Finished: No  
Enclosed: No  
Contiguous: Yes  
Permitted: Yes  
Wet space: No  
Addition: No  
Conversion: No

14 Milestone Way, Hanover, Plymouth County, Massachusetts,  
United States, 02339

**3** Floor 2 - Living Room

---



Dimensions: 19'7" x 13'1"  
Area: 256 sq. ft  
Counted as living area: Yes

Heated: Yes  
Finished: Yes  
Enclosed: Yes  
Contiguous: Yes  
Permitted: Yes  
Wet space: No  
Addition: No  
Conversion: No

**4** Floor 2 - Bath

---



Dimensions: 5'5" x 5'1"  
Area: 28 sq. ft  
Counted as living area: Yes

Heated: Yes  
Finished: Yes  
Enclosed: Yes  
Contiguous: Yes  
Permitted: Yes  
Wet space: Yes  
Addition: No  
Conversion: No

**5** Floor 2 - W.I.C.

---



Dimensions: 5'2" x 5'2"  
Area: 27 sq. ft  
Counted as living area: Yes

Heated: Yes  
Finished: Yes  
Enclosed: Yes  
Contiguous: Yes  
Permitted: Yes  
Wet space: No  
Addition: No  
Conversion: No

14 Milestone Way, Hanover, Plymouth County, Massachusetts,  
United States, 02339

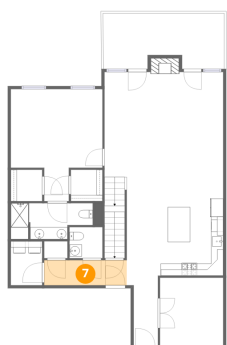
**6** Floor 2 - Laundry



Dimensions: 5'2" x 7'3"  
Area: 37 sq. ft  
Counted as living area: Yes

Heated: Yes  
Finished: Yes  
Enclosed: Yes  
Contiguous: Yes  
Permitted: Yes  
Wet space: No  
Addition: No  
Conversion: No

**7** Floor 2 - Hall



Dimensions: 13'7" x 4'1"  
Area: 55 sq. ft  
Counted as living area: Yes

Heated: Yes  
Finished: Yes  
Enclosed: Yes  
Contiguous: Yes  
Permitted: Yes  
Wet space: No  
Addition: No  
Conversion: No

**8** Floor 2 - Primary Bedroom



Dimensions: 15'1" x 18'6"  
Area: 278 sq. ft  
Counted as living area: Yes

Heated: Yes  
Finished: Yes  
Enclosed: Yes  
Contiguous: Yes  
Permitted: Yes  
Wet space: No  
Addition: No  
Conversion: No

14 Milestone Way, Hanover, Plymouth County, Massachusetts,  
United States, 02339

9 Floor 2 - Foyer



Dimensions: 4'0" x 10'4"  
Area: 41 sq. ft  
Counted as living area: Yes

Heated: Yes  
Finished: Yes  
Enclosed: Yes  
Contiguous: Yes  
Permitted: Yes  
Wet space: No  
Addition: No  
Conversion: No

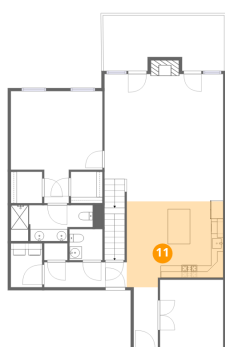
10 Floor 2 - Bath



Dimensions: 13'6" x 5'11"  
Area: 80 sq. ft  
Counted as living area: Yes

Heated: Yes  
Finished: Yes  
Enclosed: Yes  
Contiguous: Yes  
Permitted: Yes  
Wet space: Yes  
Addition: No  
Conversion: No

11 Floor 2 - Kitchen



Dimensions: 15'11" x 14'2"  
Area: 225 sq. ft  
Counted as living area: Yes

Heated: Yes  
Finished: Yes  
Enclosed: Yes  
Contiguous: Yes  
Permitted: Yes  
Wet space: No  
Addition: No  
Conversion: No

# 14 Milestone Way, Hanover, Plymouth County, Massachusetts, United States, 02339

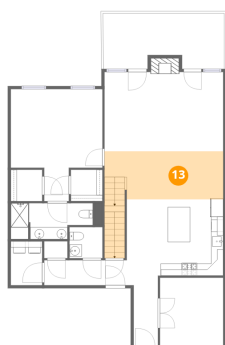
## 12 Floor 2 - W.I.C.



Dimensions: 5'2" x 5'2"  
Area: 27 sq. ft  
Counted as living area: Yes

Heated: Yes  
Finished: Yes  
Enclosed: Yes  
Contiguous: Yes  
Permitted: Yes  
Wet space: No  
Addition: No  
Conversion: No

## 13 Floor 2 - Dining Area



Dimensions: 19'7" x 8'0"  
Area: 156 sq. ft  
Counted as living area: Yes

Heated: Yes  
Finished: Yes  
Enclosed: Yes  
Contiguous: Yes  
Permitted: Yes  
Wet space: No  
Addition: No  
Conversion: No

## 14 Floor 2 - Office/Den

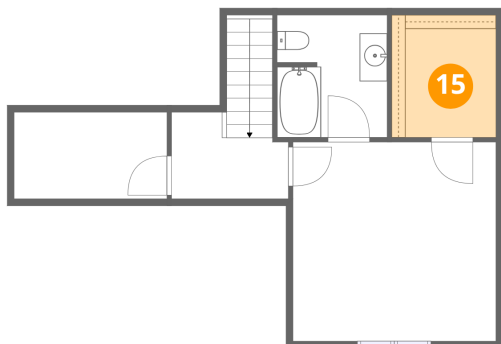


Dimensions: 10'5" x 11'7"  
Area: 121 sq. ft  
Counted as living area: Yes

Heated: Yes  
Finished: Yes  
Enclosed: Yes  
Contiguous: Yes  
Permitted: Yes  
Wet space: No  
Addition: No  
Conversion: No

14 Milestone Way, Hanover, Plymouth County, Massachusetts,  
United States, 02339

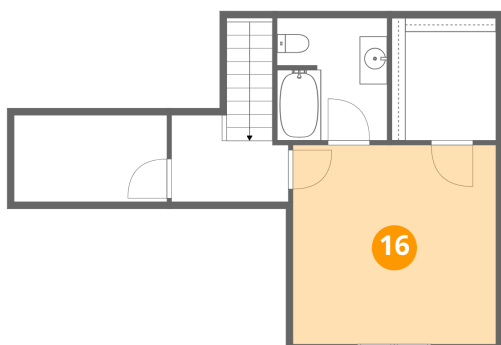
**15** Floor 3 - W.I.C.



Dimensions: 7'7" x 8'11"  
Area: 67 sq. ft  
Counted as living area: Yes

Heated: Yes  
Finished: Yes  
Enclosed: Yes  
Contiguous: Yes  
Permitted: Yes  
Wet space: No  
Addition: No  
Conversion: No

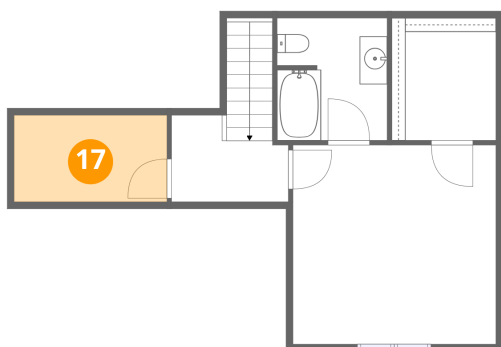
**16** Floor 3 - Bedroom



Dimensions: 14'9" x 14'6"  
Area: 213 sq. ft  
Counted as living area: Yes

Heated: Yes  
Finished: Yes  
Enclosed: Yes  
Contiguous: Yes  
Permitted: Yes  
Wet space: No  
Addition: No  
Conversion: No

**17** Floor 3 - Bonus Room

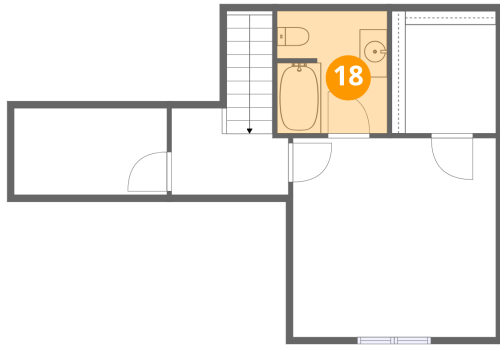


Dimensions: 11'1" x 6'3"  
Area: 70 sq. ft  
Counted as living area: Yes

Heated: Yes  
Finished: Yes  
Enclosed: Yes  
Contiguous: Yes  
Permitted: Yes  
Wet space: No  
Addition: No  
Conversion: No

14 Milestone Way, Hanover, Plymouth County, Massachusetts,  
United States, 02339

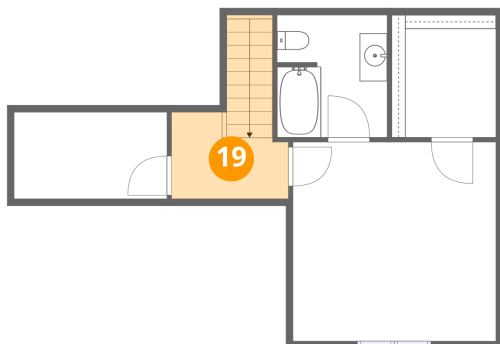
**18** Floor 3 - Bath



Dimensions: 8'0" x 8'11"  
Area: 71 sq. ft  
Counted as living area: Yes

Heated: Yes  
Finished: Yes  
Enclosed: Yes  
Contiguous: Yes  
Permitted: Yes  
Wet space: Yes  
Addition: No  
Conversion: No

**19** Floor 3 - Hall



Dimensions: 8'6" x 6'3"  
Area: 53 sq. ft  
Counted as living area: Yes

Heated: Yes  
Finished: Yes  
Enclosed: Yes  
Contiguous: Yes  
Permitted: Yes  
Wet space: No  
Addition: No  
Conversion: No