

Home data report

8173 Bent Mountain Road, Roanoke, Virginia 24018, United States



Total Area: 1058 sq. ft

Basement: 0 sq. ft, 1st Floor: 701 sq. ft, 2nd Floor: 357 sq. ft

Excluded: Basement 362 sq. ft, Deck 143 sq. ft, Walls: 140 sq. ft

Property summary

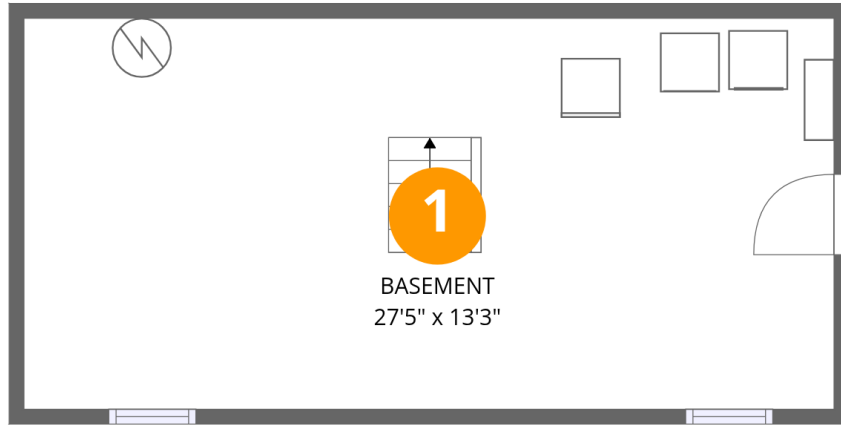
 **3** Floors

 **3** Bedrooms

 **1** Bathrooms

Home data report

8173 Bent Mountain Road, Roanoke, Virginia 24018, United States



Room dimensions

Floor 1 Below grade

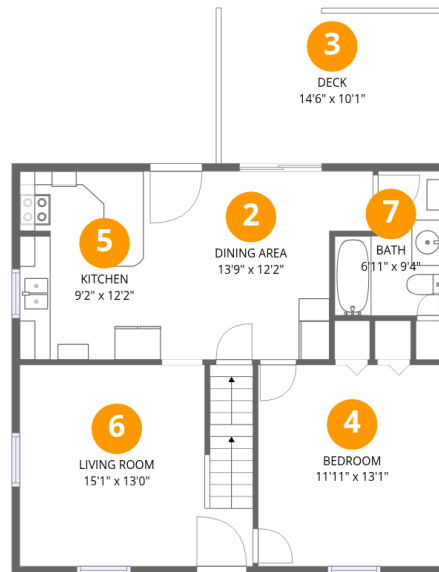
Total:0sqft

Excluded: 362sqft

#		Dimensions	sqft	Counted as living area
1	Basement	27'5" x 13'3"	362 sq. ft	No

Home data report

8173 Bent Mountain Road, Roanoke, Virginia 24018, United States



Room dimensions

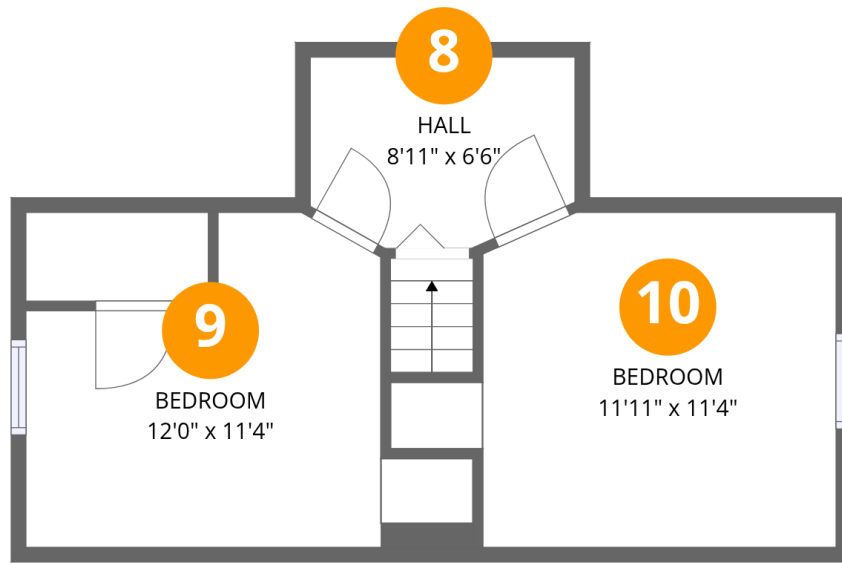
Floor 2

Total:701sqft

Excluded: 143sqft

#		Dimensions	sqft	Counted as living area
2	Dining Area	13'9" x 12'2"	168 sq. ft	Yes
3	Deck	14'6" x 10'1"	146 sq. ft	No
4	Bedroom	11'11" x 13'1"	155 sq. ft	Yes
5	Kitchen	9'2" x 12'2"	111 sq. ft	Yes
6	Living Room	15'1" x 13'0"	197 sq. ft	Yes
7	Bath	6'11" x 9'4"	65 sq. ft	Yes

8173 Bent Mountain Road, Roanoke, Virginia 24018, United States



Room dimensions

Floor 3

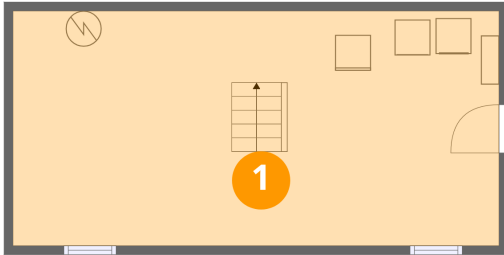
Total:357sqft

Excluded: 0sqft

#		Dimensions	sqft	Counted as living area
8	Hall	8'11" x 6'6"	58 sq. ft	Yes
9	Bedroom	12'0" x 11'4"	136 sq. ft	Yes
10	Bedroom	11'11" x 11'4"	135 sq. ft	Yes

8173 Bent Mountain Road, Roanoke, Virginia 24018, United States

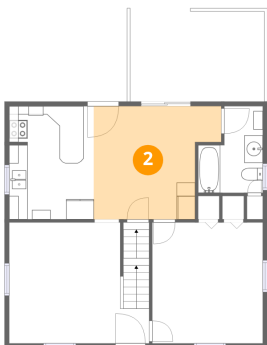
1 Floor 1 - Basement



Dimensions: 27'5" x 13'3"
Area: 362 sq. ft
Counted as living area: No

Heated: Yes
Finished: No
Enclosed: Yes
Contiguous: Yes
Permitted: Yes
Wet space: No
Addition: No
Conversion: No

2 Floor 2 - Dining Area

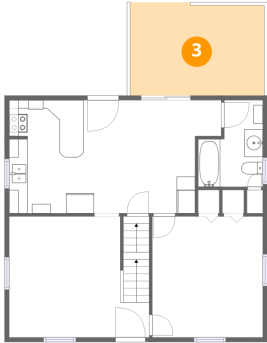


Dimensions: 13'9" x 12'2"
Area: 168 sq. ft
Counted as living area: Yes

Heated: Yes
Finished: Yes
Enclosed: Yes
Contiguous: Yes
Permitted: Yes
Wet space: No
Addition: No
Conversion: No

8173 Bent Mountain Road, Roanoke, Virginia 24018, United States

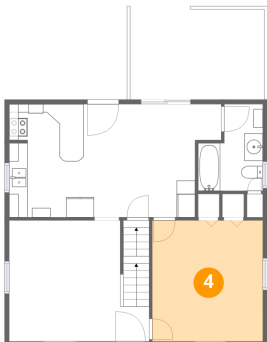
3 Floor 2 - Deck



Dimensions: 14'6" x 10'1"
Area: 146 sq. ft
Counted as living area: No

Heated: No
Finished: No
Enclosed: No
Contiguous: Yes
Permitted: Yes
Wet space: No
Addition: No
Conversion: No

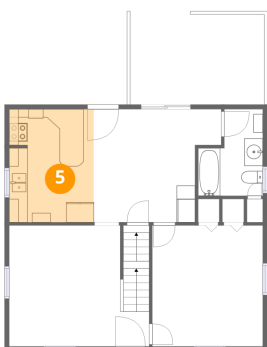
4 Floor 2 - Bedroom



Dimensions: 11'11" x 13'1"
Area: 155 sq. ft
Counted as living area: Yes

Heated: Yes
Finished: Yes
Enclosed: Yes
Contiguous: Yes
Permitted: Yes
Wet space: No
Addition: No
Conversion: No

5 Floor 2 - Kitchen

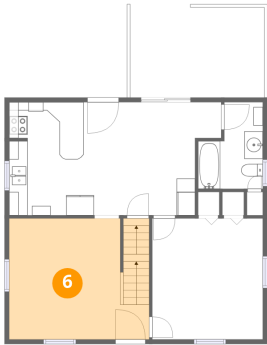


Dimensions: 9'2" x 12'2"
Area: 111 sq. ft
Counted as living area: Yes

Heated: Yes
Finished: Yes
Enclosed: Yes
Contiguous: Yes
Permitted: Yes
Wet space: No
Addition: No
Conversion: No

8173 Bent Mountain Road, Roanoke, Virginia 24018, United States

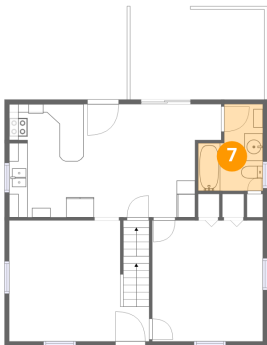
6 Floor 2 - Living Room



Dimensions: 15'1" x 13'0"
Area: 197 sq. ft
Counted as living area: Yes

Heated: Yes
Finished: Yes
Enclosed: Yes
Contiguous: Yes
Permitted: Yes
Wet space: No
Addition: No
Conversion: No

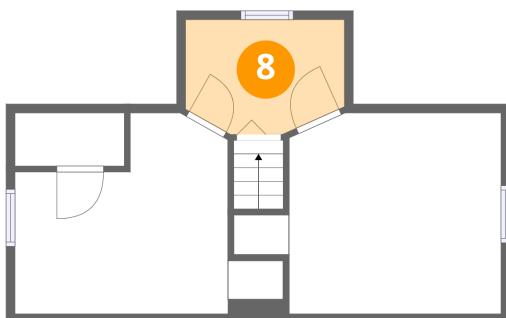
7 Floor 2 - Bath



Dimensions: 6'11" x 9'4"
Area: 65 sq. ft
Counted as living area: Yes

Heated: Yes
Finished: Yes
Enclosed: Yes
Contiguous: Yes
Permitted: Yes
Wet space: Yes
Addition: No
Conversion: No

8 Floor 3 - Hall



Dimensions: 8'11" x 6'6"
Area: 58 sq. ft
Counted as living area: Yes

Heated: Yes
Finished: Yes
Enclosed: Yes
Contiguous: Yes
Permitted: Yes
Wet space: No
Addition: No
Conversion: No

8173 Bent Mountain Road, Roanoke, Virginia 24018, United States

9 Floor 3 - Bedroom



Dimensions: 12'0" x 11'4"
Area: 136 sq. ft
Counted as living area: Yes

Heated: Yes
Finished: Yes
Enclosed: Yes
Contiguous: Yes
Permitted: Yes
Wet space: No
Addition: No
Conversion: No

10 Floor 3 - Bedroom



Dimensions: 11'11" x 11'4"
Area: 135 sq. ft
Counted as living area: Yes

Heated: Yes
Finished: Yes
Enclosed: Yes
Contiguous: Yes
Permitted: Yes
Wet space: No
Addition: No
Conversion: No