

Home data report

17 Pacio Court, Roseland, Essex County, New Jersey, United States, 07068



Total Area: 2643 sq. ft

Basement: 634 sq. ft, 1st Floor: 989 sq. ft, 2nd Floor: 1020 sq. ft

Excluded: Storage / utility room 296 sq. ft, Undefined 26 sq. ft, Garage 387 sq. ft, Patio 113 sq. ft, Porch 63 sq. ft, Deck 66 sq. ft, Open to below 154 sq. ft, Storage 19 sq. ft, Walls: 214 sq. ft

Property summary



Home data report

17 Pacio Court, Roseland, Essex County, New Jersey, United States, 07068



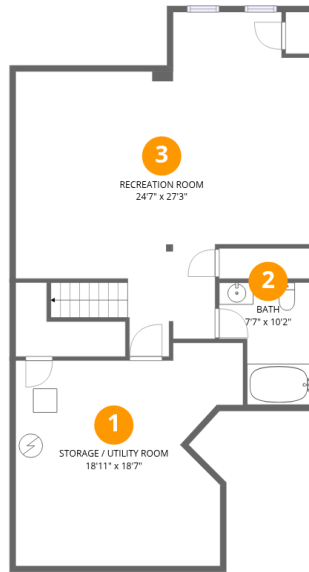
1
Half baths



1
Garages

Home data report

17 Pacio Court, Roseland, Essex County, New Jersey, United States, 07068



Room dimensions

Floor 1 Below grade

Total:634sqft

Excluded: 322sqft

#		Dimensions	sqft	Counted as living area
1	Storage / Utility Room	18'11" x 18'7"	352 sq. ft	No
2	Bath	7'7" x 10'2"	78 sq. ft	Yes
3	Recreation Room	24'7" x 27'3"	669 sq. ft	Yes

Home data report

17 Pacio Court, Roseland, Essex County, New Jersey, United States, 07068



Room dimensions

Floor 2

Total:989sqft

Excluded: 629sqft

#		Dimensions	sqft	Counted as living area
4	Deck	12'7" x 4'7"	58 sq. ft	No
5	Living Room	12'9" x 17'3"	221 sq. ft	Yes
6	Patio	12'9" x 9'5"	120 sq. ft	No
7	Porch	9'5" x 6'3"	59 sq. ft	No
8	Laundry	5'10" x 8'10"	51 sq. ft	Yes
9	Hall	3'6" x 6'5"	22 sq. ft	Yes
10	Foyer	10'4" x 7'1"	73 sq. ft	Yes
11	Kitchen	11'9" x 10'4"	122 sq. ft	Yes
12	Bath	7'9" x 3'1"	24 sq. ft	Yes
13	Office	10'11" x 11'8"	127 sq. ft	Yes
14	Garage	19'9" x 19'8"	387 sq. ft	No

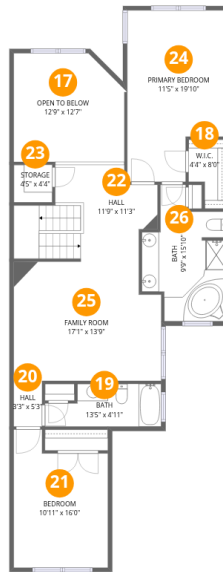
Home data report

17 Pacio Court, Roseland, Essex County, New Jersey, United States, 07068

#		Dimensions	sqft	Counted as living area
15	Breakfast Area	11'5" x 8'9"	100 sq. ft	Yes
16	Dining Room	11'5" x 13'3"	152 sq. ft	Yes

Home data report

17 Pacio Court, Roseland, Essex County, New Jersey, United States, 07068



Room dimensions

Floor 3

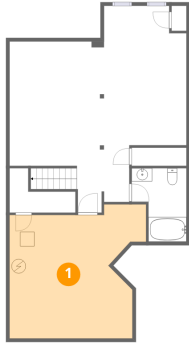
Total:1020sqft

Excluded: 173sqft

#		Dimensions	sqft	Counted as living area
17	Open To Below	12'9" x 12'7"	161 sq. ft	No
18	W.I.C.	4'4" x 8'0"	35 sq. ft	Yes
19	Bath	13'5" x 4'11"	66 sq. ft	Yes
20	Hall	3'3" x 5'3"	17 sq. ft	Yes
21	Bedroom	10'11" x 16'0"	174 sq. ft	Yes
22	Hall	11'9" x 11'3"	132 sq. ft	Yes
23	Storage	4'5" x 4'4"	19 sq. ft	No
24	Primary Bedroom	11'5" x 19'10"	227 sq. ft	Yes
25	Family Room	17'1" x 13'9"	235 sq. ft	Yes
26	Bath	9'9" x 15'10"	154 sq. ft	Yes

17 Pacio Court, Roseland, Essex County, New Jersey, United States, 07068

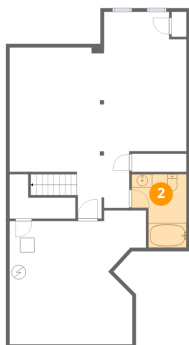
1 Floor 1 - Storage / Utility Room



Dimensions: 18'11" x 18'7"
Area: 352 sq. ft
Counted as living area: No

Heated: Yes
Finished: No
Enclosed: Yes
Contiguous: Yes
Permitted: Yes
Wet space: No
Addition: No
Conversion: No

2 Floor 1 - Bath

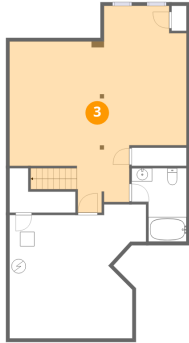


Dimensions: 7'7" x 10'2"
Area: 78 sq. ft
Counted as living area: No

Heated: Yes
Finished: Yes
Enclosed: Yes
Contiguous: No
Permitted: Yes
Wet space: Yes
Addition: No
Conversion: No

17 Pacio Court, Roseland, Essex County, New Jersey, United States, 07068

3 Floor 1 - Recreation Room



Dimensions: 24'7" x 27'3"
Area: 669 sq. ft
Counted as living area: No

Heated: Yes
Finished: Yes
Enclosed: Yes
Contiguous: No
Permitted: Yes
Wet space: No
Addition: No
Conversion: No

4 Floor 2 - Deck



Dimensions: 12'7" x 4'7"
Area: 58 sq. ft
Counted as living area: No

Heated: No
Finished: No
Enclosed: No
Contiguous: Yes
Permitted: Yes
Wet space: No
Addition: No
Conversion: No

5 Floor 2 - Living Room



Dimensions: 12'9" x 17'3"
Area: 221 sq. ft
Counted as living area: Yes

Heated: Yes
Finished: Yes
Enclosed: Yes
Contiguous: Yes
Permitted: Yes
Wet space: No
Addition: No
Conversion: No

17 Pacio Court, Roseland, Essex County, New Jersey, United States, 07068

6 Floor 2 - Patio



Dimensions: 12'9" x 9'5"
Area: 120 sq. ft
Counted as living area: No

Heated: No
Finished: No
Enclosed: No
Contiguous: Yes
Permitted: Yes
Wet space: No
Addition: No
Conversion: No

7 Floor 2 - Porch



Dimensions: 9'5" x 6'3"
Area: 59 sq. ft
Counted as living area: No

Heated: No
Finished: No
Enclosed: No
Contiguous: Yes
Permitted: Yes
Wet space: No
Addition: No
Conversion: No

8 Floor 2 - Laundry



Dimensions: 5'10" x 8'10"
Area: 51 sq. ft
Counted as living area: Yes

Heated: Yes
Finished: Yes
Enclosed: Yes
Contiguous: Yes
Permitted: Yes
Wet space: No
Addition: No
Conversion: No

17 Pacio Court, Roseland, Essex County, New Jersey, United States, 07068

9 Floor 2 - Hall



Dimensions: 3'6" x 6'5"
Area: 22 sq. ft
Counted as living area: Yes

Heated: Yes
Finished: Yes
Enclosed: Yes
Contiguous: Yes
Permitted: Yes
Wet space: No
Addition: No
Conversion: No

10 Floor 2 - Foyer



Dimensions: 10'4" x 7'1"
Area: 73 sq. ft
Counted as living area: Yes

Heated: Yes
Finished: Yes
Enclosed: Yes
Contiguous: Yes
Permitted: Yes
Wet space: No
Addition: No
Conversion: No

11 Floor 2 - Kitchen



Dimensions: 11'9" x 10'4"
Area: 122 sq. ft
Counted as living area: Yes

Heated: Yes
Finished: Yes
Enclosed: Yes
Contiguous: Yes
Permitted: Yes
Wet space: No
Addition: No
Conversion: No

17 Pacio Court, Roseland, Essex County, New Jersey, United States, 07068

12 Floor 2 - Bath



Dimensions: 7'9" x 3'1"
Area: 24 sq. ft
Counted as living area: Yes

Heated: Yes
Finished: Yes
Enclosed: Yes
Contiguous: Yes
Permitted: Yes
Wet space: Yes
Addition: No
Conversion: No

13 Floor 2 - Office



Dimensions: 10'11" x 11'8"
Area: 127 sq. ft
Counted as living area: Yes

Heated: Yes
Finished: Yes
Enclosed: Yes
Contiguous: Yes
Permitted: Yes
Wet space: No
Addition: No
Conversion: No

14 Floor 2 - Garage



Dimensions: 19'9" x 19'8"
Area: 387 sq. ft
Counted as living area: No

Heated: No
Finished: No
Enclosed: Yes
Contiguous: Yes
Permitted: Yes
Wet space: No
Addition: No
Conversion: No

17 Pacio Court, Roseland, Essex County, New Jersey, United States, 07068

15 Floor 2 - Breakfast Area



Dimensions: 11'5" x 8'9"
Area: 100 sq. ft
Counted as living area: Yes

Heated: Yes
Finished: Yes
Enclosed: Yes
Contiguous: Yes
Permitted: Yes
Wet space: No
Addition: No
Conversion: No

16 Floor 2 - Dining Room



Dimensions: 11'5" x 13'3"
Area: 152 sq. ft
Counted as living area: Yes

Heated: Yes
Finished: Yes
Enclosed: Yes
Contiguous: Yes
Permitted: Yes
Wet space: No
Addition: No
Conversion: No

17 Floor 3 - Open To Below



Dimensions: 12'9" x 12'7"
Area: 161 sq. ft
Counted as living area: No

Heated: No
Finished: No
Enclosed: No
Contiguous: Yes
Permitted: No
Wet space: No
Addition: No
Conversion: No

17 Pacio Court, Roseland, Essex County, New Jersey, United States, 07068

18 Floor 3 - W.I.C.



Dimensions: 4'4" x 8'0"
Area: 35 sq. ft
Counted as living area: Yes

Heated: Yes
Finished: Yes
Enclosed: Yes
Contiguous: Yes
Permitted: Yes
Wet space: No
Addition: No
Conversion: No

19 Floor 3 - Bath



Dimensions: 13'5" x 4'11"
Area: 66 sq. ft
Counted as living area: Yes

Heated: Yes
Finished: Yes
Enclosed: Yes
Contiguous: Yes
Permitted: Yes
Wet space: Yes
Addition: No
Conversion: No

20 Floor 3 - Hall



Dimensions: 3'3" x 5'3"
Area: 17 sq. ft
Counted as living area: Yes

Heated: Yes
Finished: Yes
Enclosed: Yes
Contiguous: Yes
Permitted: Yes
Wet space: No
Addition: No
Conversion: No

17 Pacio Court, Roseland, Essex County, New Jersey, United States, 07068

21 Floor 3 - Bedroom



Dimensions: 10'11" x 16'0"
Area: 174 sq. ft
Counted as living area: Yes

Heated: Yes
Finished: Yes
Enclosed: Yes
Contiguous: Yes
Permitted: Yes
Wet space: No
Addition: No
Conversion: No

22 Floor 3 - Hall



Dimensions: 11'9" x 11'3"
Area: 132 sq. ft
Counted as living area: Yes

Heated: Yes
Finished: Yes
Enclosed: Yes
Contiguous: Yes
Permitted: Yes
Wet space: No
Addition: No
Conversion: No

23 Floor 3 - Storage



Dimensions: 4'5" x 4'4"
Area: 19 sq. ft
Counted as living area: No

Heated: No
Finished: No
Enclosed: No
Contiguous: Yes
Permitted: Yes
Wet space: No
Addition: No
Conversion: No

17 Pacio Court, Roseland, Essex County, New Jersey, United States, 07068

24 Floor 3 - Primary Bedroom



Dimensions: 11'5" x 19'10"
Area: 227 sq. ft
Counted as living area: Yes

Heated: Yes
Finished: Yes
Enclosed: Yes
Contiguous: Yes
Permitted: Yes
Wet space: No
Addition: No
Conversion: No

25 Floor 3 - Family Room



Dimensions: 17'1" x 13'9"
Area: 235 sq. ft
Counted as living area: Yes

Heated: Yes
Finished: Yes
Enclosed: Yes
Contiguous: Yes
Permitted: Yes
Wet space: No
Addition: No
Conversion: No

26 Floor 3 - Bath



Dimensions: 9'9" x 15'10"
Area: 154 sq. ft
Counted as living area: Yes

Heated: Yes
Finished: Yes
Enclosed: Yes
Contiguous: Yes
Permitted: Yes
Wet space: Yes
Addition: No
Conversion: No