

Home data report

540 Lakeshore Terrace Road, Hardy, Franklin County, Virginia,
United States, 24101



Total Area: 4152 sq. ft

1st Floor: 1569 sq. ft, 2nd Floor: 1884 sq. ft, 3rd Floor: 699 sq. ft

Excluded: Utility 127 sq. ft, Storage 88 sq. ft, Screened porch 152 sq. ft, Covered deck 379 sq. ft, Deck 654 sq. ft, Porch 69 sq. ft, Open to below 414 sq. ft, Walls: 301 sq. ft

Property summary

 **3** Floors

 **4** Bedrooms

 **3** Bathrooms

Home data report

**540 Lakeshore Terrace Road, Hardy, Franklin County, Virginia,
United States, 24101**



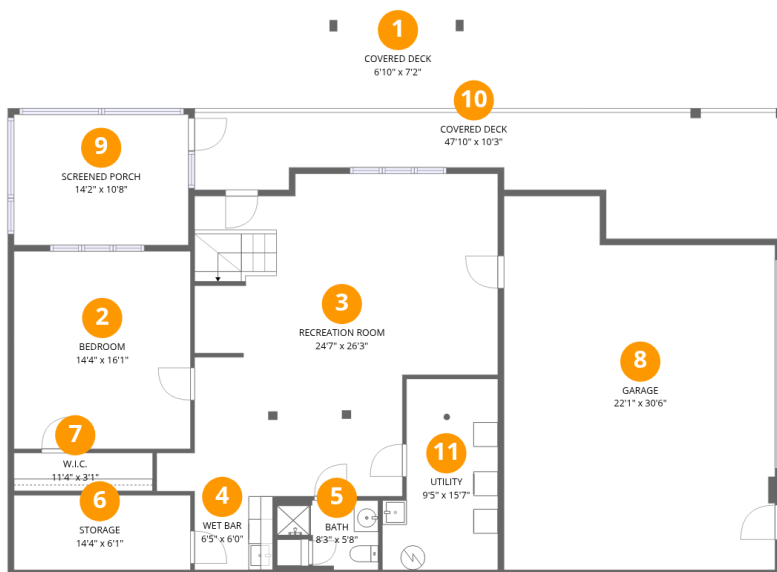
1
Half baths



1
Garages

Home data report

540 Lakeshore Terrace Road, Hardy, Franklin County, Virginia, United States, 24101



Room dimensions

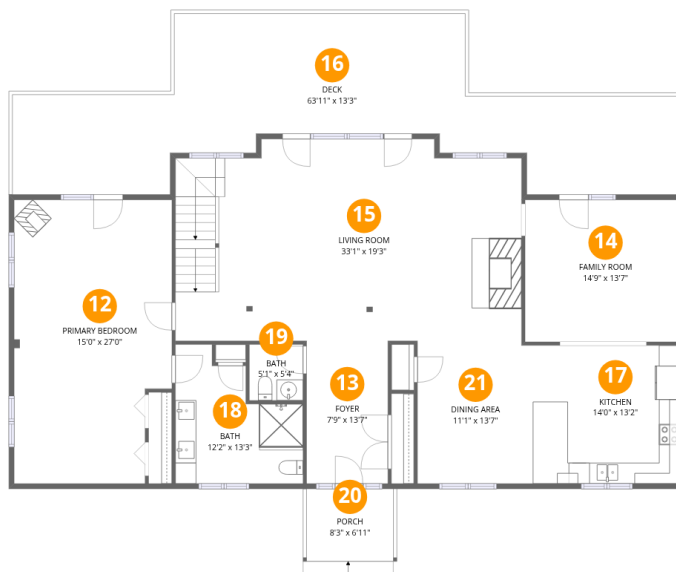
Floor 1

Total:1569sqft Excluded: 746sqft

#		Dimensions	sqft	Counted as living area
1	Covered Deck	6'10" x 7'2"	49 sq. ft	No
2	Bedroom	14'4" x 16'1"	231 sq. ft	Yes
3	Recreation Room	24'7" x 26'3"	645 sq. ft	Yes
4	Wet Bar	6'5" x 6'0"	38 sq. ft	Yes
5	Bath	8'3" x 5'8"	47 sq. ft	Yes
6	Storage	14'4" x 6'1"	87 sq. ft	No
7	W.I.C.	11'4" x 3'1"	35 sq. ft	Yes
8	Garage	22'1" x 30'6"	673 sq. ft	Yes
9	Screened Porch	14'2" x 10'8"	151 sq. ft	No
10	Covered Deck	47'10" x 10'3"	490 sq. ft	No
11	Utility	9'5" x 15'7"	147 sq. ft	No

Home data report

540 Lakeshore Terrace Road, Hardy, Franklin County, Virginia,
United States, 24101



Room dimensions

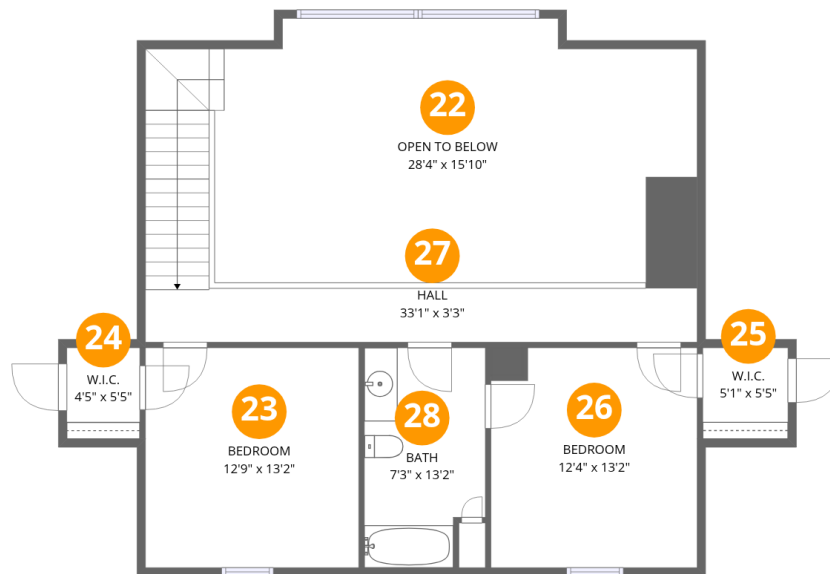
Floor 2

Total:1884sqft Excluded: 723sqft

#		Dimensions	sqft	Counted as living area
12	Primary Bedroom	15'0" x 27'0"	406 sq. ft	Yes
13	Foyer	7'9" x 13'7"	105 sq. ft	Yes
14	Family Room	14'9" x 13'7"	200 sq. ft	Yes
15	Living Room	33'1" x 19'3"	638 sq. ft	Yes
16	Deck	63'11" x 13'3"	849 sq. ft	No
17	Kitchen	14'0" x 13'2"	185 sq. ft	Yes
18	Bath	12'2" x 13'3"	162 sq. ft	Yes
19	Bath	5'1" x 5'4"	27 sq. ft	Yes
20	Porch	8'3" x 6'11"	57 sq. ft	No
21	Dining Area	11'1" x 13'7"	150 sq. ft	Yes

Home data report

540 Lakeshore Terrace Road, Hardy, Franklin County, Virginia,
United States, 24101



Room dimensions

Floor 3

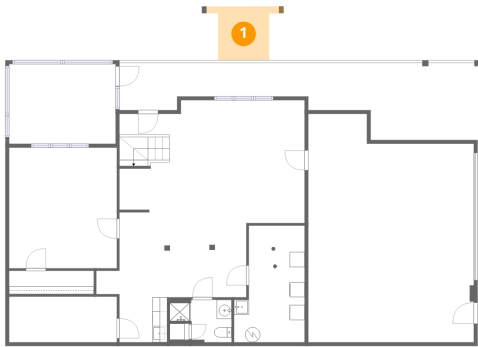
Total:699sqft

Excluded: 414sqft

#		Dimensions	sqft	Counted as living area
22	Open To Below	28'4" x 15'10"	448 sq. ft	No
23	Bedroom	12'9" x 13'2"	168 sq. ft	Yes
24	W.I.C.	4'5" x 5'5"	24 sq. ft	Yes
25	W.I.C.	5'1" x 5'5"	28 sq. ft	Yes
26	Bedroom	12'4" x 13'2"	162 sq. ft	Yes
27	Hall	33'1" x 3'3"	108 sq. ft	Yes
28	Bath	7'3" x 13'2"	96 sq. ft	Yes

540 Lakeshore Terrace Road, Hardy, Franklin County, Virginia,
United States, 24101

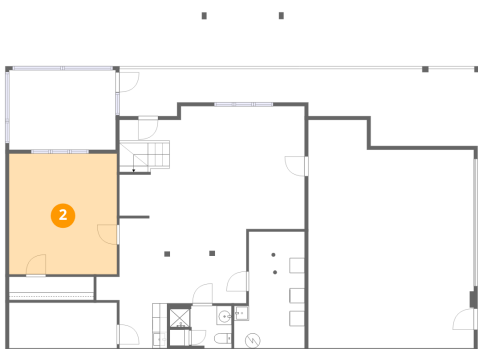
1 Floor 1 - Covered Deck



Dimensions: 6'10" x 7'2"
Area: 49 sq. ft
Counted as living area: No

Heated: No
Finished: No
Enclosed: No
Contiguous: Yes
Permitted: Yes
Wet space: No
Addition: No
Conversion: No

2 Floor 1 - Bedroom

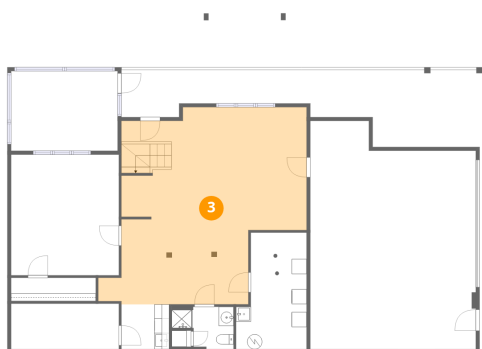


Dimensions: 14'4" x 16'1"
Area: 231 sq. ft
Counted as living area: Yes

Heated: Yes
Finished: Yes
Enclosed: Yes
Contiguous: Yes
Permitted: Yes
Wet space: No
Addition: No
Conversion: No

540 Lakeshore Terrace Road, Hardy, Franklin County, Virginia, United States, 24101

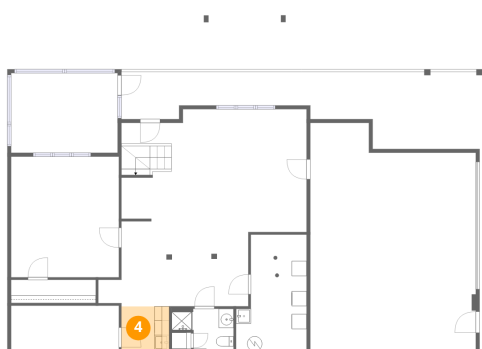
3 Floor 1 - Recreation Room



Dimensions: 24'7" x 26'3"
Area: 645 sq. ft
Counted as living area: Yes

Heated: Yes
Finished: Yes
Enclosed: Yes
Contiguous: Yes
Permitted: Yes
Wet space: No
Addition: No
Conversion: No

4 Floor 1 - Wet Bar



Dimensions: 6'5" x 6'0"
Area: 38 sq. ft
Counted as living area: Yes

Heated: Yes
Finished: Yes
Enclosed: Yes
Contiguous: Yes
Permitted: Yes
Wet space: No
Addition: No
Conversion: No

5 Floor 1 - Bath

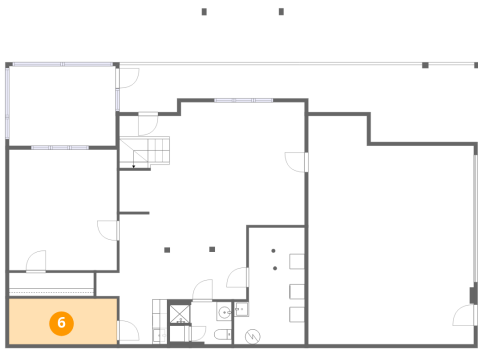


Dimensions: 8'3" x 5'8"
Area: 47 sq. ft
Counted as living area: Yes

Heated: Yes
Finished: Yes
Enclosed: Yes
Contiguous: Yes
Permitted: Yes
Wet space: Yes
Addition: No
Conversion: No

540 Lakeshore Terrace Road, Hardy, Franklin County, Virginia,
United States, 24101

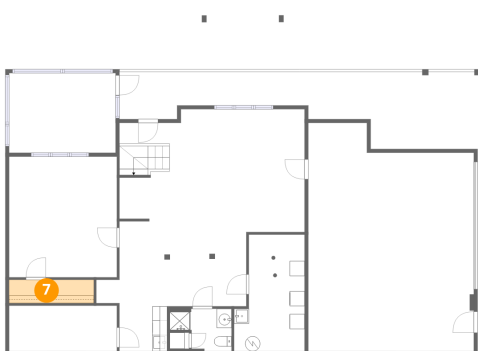
6 Floor 1 - Storage



Dimensions: 14'4" x 6'1"
Area: 87 sq. ft
Counted as living area: No

Heated: No
Finished: No
Enclosed: No
Contiguous: Yes
Permitted: Yes
Wet space: No
Addition: No
Conversion: No

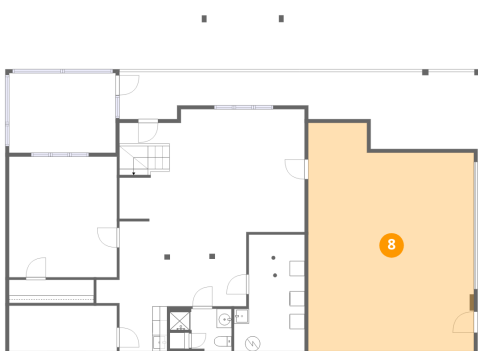
7 Floor 1 - W.I.C.



Dimensions: 11'4" x 3'1"
Area: 35 sq. ft
Counted as living area: Yes

Heated: Yes
Finished: Yes
Enclosed: Yes
Contiguous: Yes
Permitted: Yes
Wet space: No
Addition: No
Conversion: No

8 Floor 1 - Garage

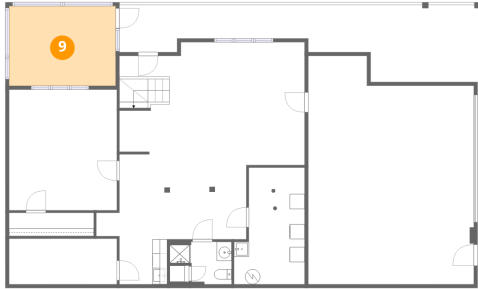


Dimensions: 22'1" x 30'6"
Area: 673 sq. ft
Counted as living area: No

Heated: No
Finished: Yes
Enclosed: Yes
Contiguous: Yes
Permitted: Yes
Wet space: No
Addition: No
Conversion: No

540 Lakeshore Terrace Road, Hardy, Franklin County, Virginia,
United States, 24101

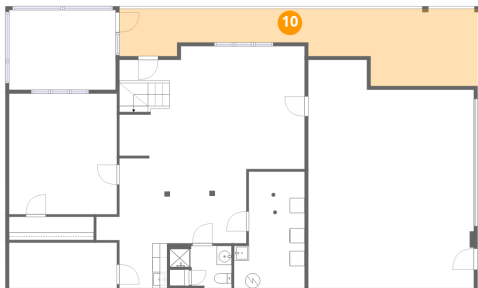
9 Floor 1 - Screened Porch



Dimensions: 14'2" x 10'8"
Area: 151 sq. ft
Counted as living area: No

Heated: No
Finished: No
Enclosed: No
Contiguous: Yes
Permitted: Yes
Wet space: No
Addition: No
Conversion: No

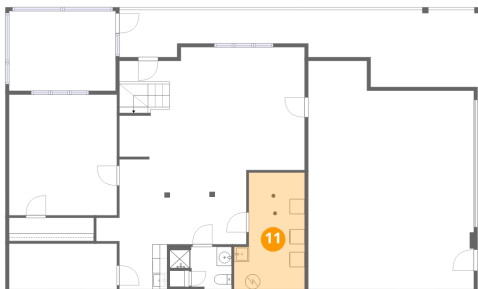
10 Floor 1 - Covered Deck



Dimensions: 47'10" x 10'3"
Area: 490 sq. ft
Counted as living area: No

Heated: No
Finished: No
Enclosed: No
Contiguous: Yes
Permitted: Yes
Wet space: No
Addition: No
Conversion: No

11 Floor 1 - Utility

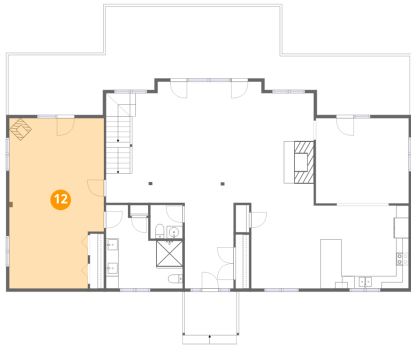


Dimensions: 9'5" x 15'7"
Area: 147 sq. ft
Counted as living area: No

Heated: Yes
Finished: No
Enclosed: Yes
Contiguous: Yes
Permitted: Yes
Wet space: No
Addition: No
Conversion: No

540 Lakeshore Terrace Road, Hardy, Franklin County, Virginia,
United States, 24101

12 Floor 2 - Primary Bedroom



Dimensions: 15'0" x 27'0"
Area: 406 sq. ft
Counted as living area: Yes

Heated: Yes
Finished: Yes
Enclosed: Yes
Contiguous: Yes
Permitted: Yes
Wet space: No
Addition: No
Conversion: No

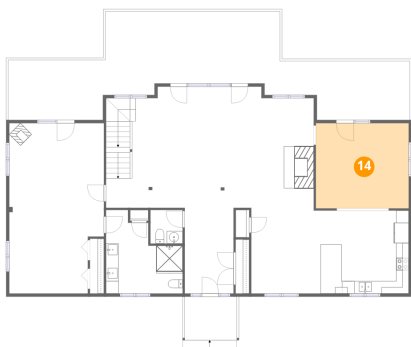
13 Floor 2 - Foyer



Dimensions: 7'9" x 13'7"
Area: 105 sq. ft
Counted as living area: Yes

Heated: Yes
Finished: Yes
Enclosed: Yes
Contiguous: Yes
Permitted: Yes
Wet space: No
Addition: No
Conversion: No

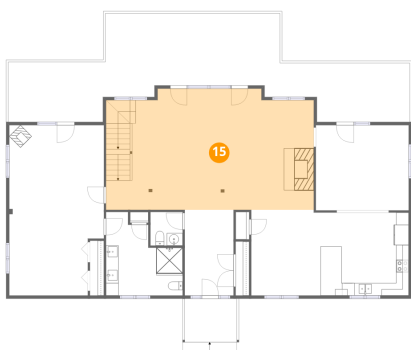
14 Floor 2 - Family Room



Dimensions: 14'9" x 13'7"
Area: 200 sq. ft
Counted as living area: Yes

Heated: Yes
Finished: Yes
Enclosed: Yes
Contiguous: Yes
Permitted: Yes
Wet space: No
Addition: No
Conversion: No

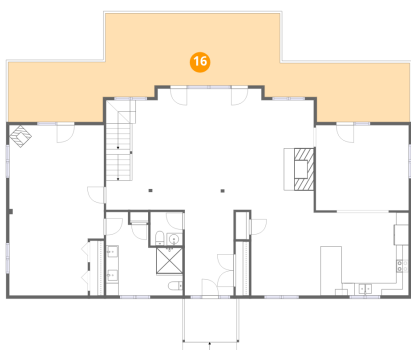
15 Floor 2 - Living Room



Dimensions: 33'1" x 19'3"
Area: 638 sq. ft
Counted as living area: Yes

Heated: Yes
Finished: Yes
Enclosed: Yes
Contiguous: Yes
Permitted: Yes
Wet space: No
Addition: No
Conversion: No

16 Floor 2 - Deck



Dimensions: 63'11" x 13'3"
Area: 849 sq. ft
Counted as living area: No

Heated: No
Finished: No
Enclosed: No
Contiguous: Yes
Permitted: Yes
Wet space: No
Addition: No
Conversion: No

17 Floor 2 - Kitchen

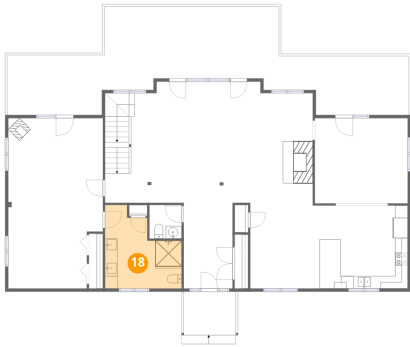


Dimensions: 14'0" x 13'2"
Area: 185 sq. ft
Counted as living area: Yes

Heated: Yes
Finished: Yes
Enclosed: Yes
Contiguous: Yes
Permitted: Yes
Wet space: No
Addition: No
Conversion: No

540 Lakeshore Terrace Road, Hardy, Franklin County, Virginia,
United States, 24101

18 Floor 2 - Bath



Dimensions: 12'2" x 13'3"
Area: 162 sq. ft
Counted as living area: Yes

Heated: Yes
Finished: Yes
Enclosed: Yes
Contiguous: Yes
Permitted: Yes
Wet space: Yes
Addition: No
Conversion: No

19 Floor 2 - Bath



Dimensions: 5'1" x 5'4"
Area: 27 sq. ft
Counted as living area: Yes

Heated: Yes
Finished: Yes
Enclosed: Yes
Contiguous: Yes
Permitted: Yes
Wet space: Yes
Addition: No
Conversion: No

20 Floor 2 - Porch



Dimensions: 8'3" x 6'11"
Area: 57 sq. ft
Counted as living area: No

Heated: No
Finished: No
Enclosed: No
Contiguous: Yes
Permitted: Yes
Wet space: No
Addition: No
Conversion: No

540 Lakeshore Terrace Road, Hardy, Franklin County, Virginia,
United States, 24101

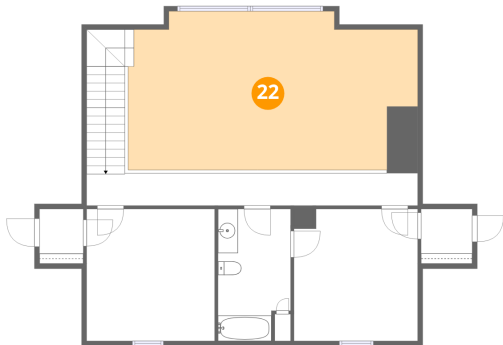
21 Floor 2 - Dining Area



Dimensions: 11'1" x 13'7"
Area: 150 sq. ft
Counted as living area: Yes

Heated: Yes
Finished: Yes
Enclosed: Yes
Contiguous: Yes
Permitted: Yes
Wet space: No
Addition: No
Conversion: No

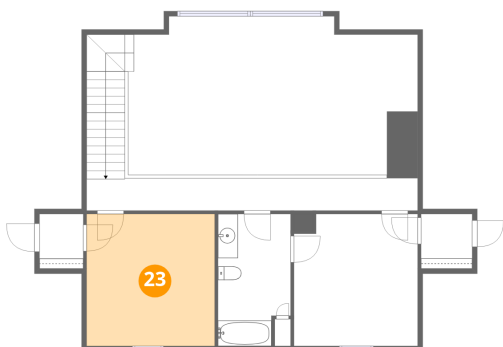
22 Floor 3 - Open To Below



Dimensions: 28'4" x 15'10"
Area: 448 sq. ft
Counted as living area: No

Heated: No
Finished: No
Enclosed: No
Contiguous: Yes
Permitted: No
Wet space: No
Addition: No
Conversion: No

23 Floor 3 - Bedroom

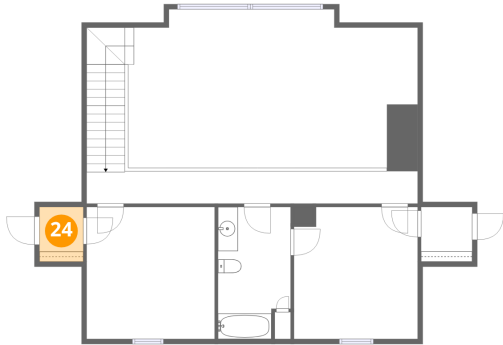


Dimensions: 12'9" x 13'2"
Area: 168 sq. ft
Counted as living area: Yes

Heated: Yes
Finished: Yes
Enclosed: Yes
Contiguous: Yes
Permitted: Yes
Wet space: No
Addition: No
Conversion: No

540 Lakeshore Terrace Road, Hardy, Franklin County, Virginia,
United States, 24101

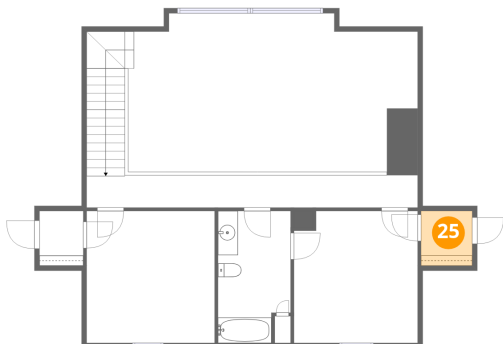
24 Floor 3 - W.I.C.



Dimensions: 4'5" x 5'5"
Area: 24 sq. ft
Counted as living area: Yes

Heated: Yes
Finished: Yes
Enclosed: Yes
Contiguous: Yes
Permitted: Yes
Wet space: No
Addition: No
Conversion: No

25 Floor 3 - W.I.C.



Dimensions: 5'1" x 5'5"
Area: 28 sq. ft
Counted as living area: Yes

Heated: Yes
Finished: Yes
Enclosed: Yes
Contiguous: Yes
Permitted: Yes
Wet space: No
Addition: No
Conversion: No

26 Floor 3 - Bedroom

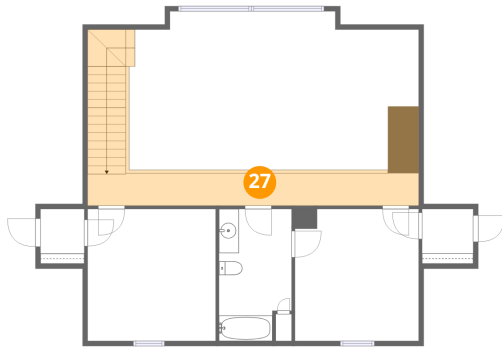


Dimensions: 12'4" x 13'2"
Area: 162 sq. ft
Counted as living area: Yes

Heated: Yes
Finished: Yes
Enclosed: Yes
Contiguous: Yes
Permitted: Yes
Wet space: No
Addition: No
Conversion: No

540 Lakeshore Terrace Road, Hardy, Franklin County, Virginia,
United States, 24101

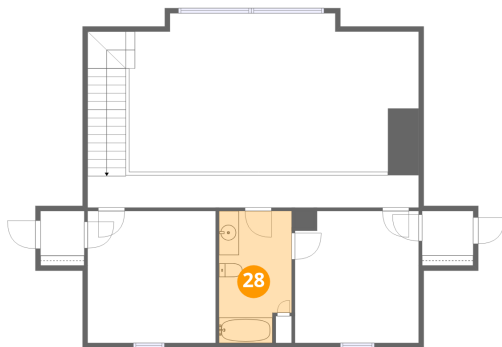
27 Floor 3 - Hall



Dimensions: 33'1" x 3'3"
Area: 108 sq. ft
Counted as living area: Yes

Heated: Yes
Finished: Yes
Enclosed: Yes
Contiguous: Yes
Permitted: Yes
Wet space: No
Addition: No
Conversion: No

28 Floor 3 - Bath



Dimensions: 7'3" x 13'2"
Area: 96 sq. ft
Counted as living area: Yes

Heated: Yes
Finished: Yes
Enclosed: Yes
Contiguous: Yes
Permitted: Yes
Wet space: Yes
Addition: No
Conversion: No