

## Home data report

**101 Sunnydale Court, Heatherstone, Laymantown, Troutville,  
Botetourt County, Virginia, United States, 24175**



**Total Area: 1207 sq. ft**

1st Floor: 0 sq. ft, 2nd Floor: 1207 sq. ft

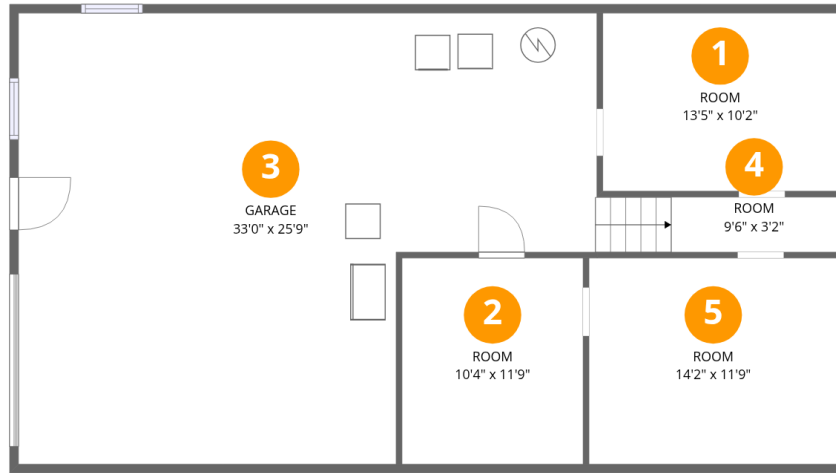
Excluded: Room 482 sq. ft, Garage 712 sq. ft, Porch 18 sq. ft, Fireplace 8 sq. ft, Walls: 154 sq. ft

## Property summary



## Home data report

101 Sunnydale Court, Heatherstone, Laymantown, Troutville,  
Botetourt County, Virginia, United States, 24175



## Room dimensions

Floor 1

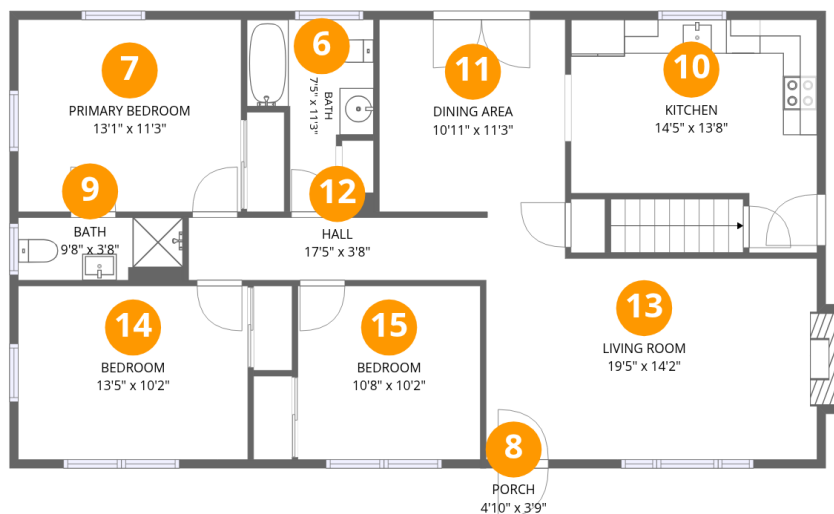
Total:0sqft

Excluded: 1194sqft

#		Dimensions	sqft	Counted as living area
1	Room	13'5" x 10'2"	136 sq. ft	No
2	Room	10'4" x 11'9"	122 sq. ft	No
3	Garage	33'0" x 25'9"	712 sq. ft	No
4	Room	9'6" x 3'2"	43 sq. ft	No
5	Room	14'2" x 11'9"	167 sq. ft	No

Home data report

101 Sunnydale Court, Heatherstone, Laymantown, Troutville, Botetourt County, Virginia, United States, 24175



Room dimensions

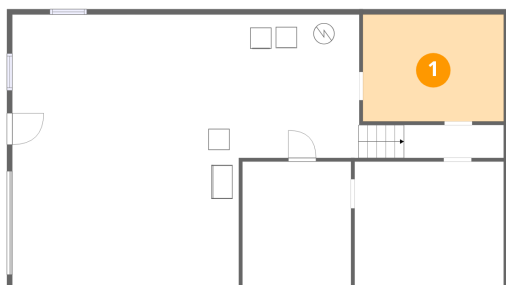
Floor 2

Total:1207sqft Excluded: 26sqft

#		Dimensions	sqft	Counted as living area
6	Bath	7'5" x 11'3"	58 sq. ft	Yes
7	Primary Bedroom	13'1" x 11'3"	147 sq. ft	Yes
8	Porch	4'10" x 3'9"	18 sq. ft	No
9	Bath	9'8" x 3'8"	35 sq. ft	Yes
10	Kitchen	14'5" x 13'8"	160 sq. ft	Yes
11	Dining Area	10'11" x 11'3"	124 sq. ft	Yes
12	Hall	17'5" x 3'8"	64 sq. ft	Yes
13	Living Room	19'5" x 14'2"	246 sq. ft	Yes
14	Bedroom	13'5" x 10'2"	137 sq. ft	Yes
15	Bedroom	10'8" x 10'2"	109 sq. ft	Yes

101 Sunnydale Court, Heatherstone, Laymantown, Troutville,  
Botetourt County, Virginia, United States, 24175

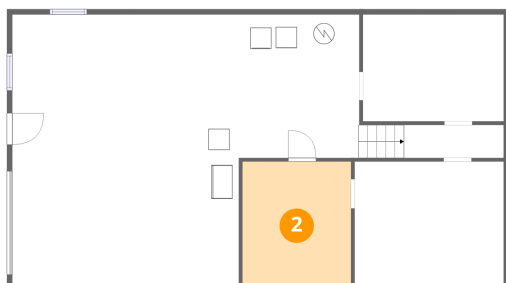
1 Floor 1 - Room



Dimensions: 13'5" x 10'2"  
Area: 136 sq. ft  
Counted as living area: No

Heated: Yes  
Finished: No  
Enclosed: Yes  
Contiguous: Yes  
Permitted: Yes  
Wet space: No  
Addition: No  
Conversion: No

2 Floor 1 - Room

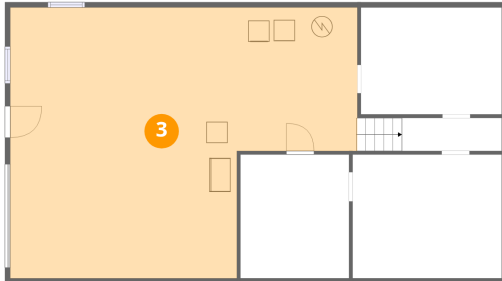


Dimensions: 10'4" x 11'9"  
Area: 122 sq. ft  
Counted as living area: No

Heated: Yes  
Finished: No  
Enclosed: Yes  
Contiguous: Yes  
Permitted: Yes  
Wet space: No  
Addition: No  
Conversion: No

101 Sunnydale Court, Heatherstone, Laymantown, Troutville,  
Botetourt County, Virginia, United States, 24175

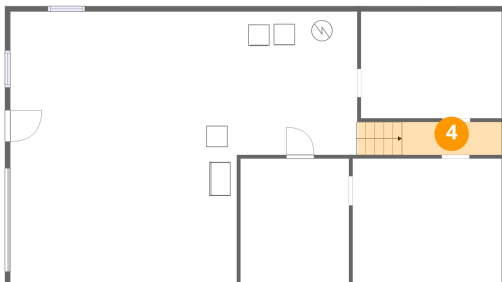
**3** Floor 1 - Garage



Dimensions: 33'0" x 25'9"  
Area: 712 sq. ft  
Counted as living area: No

Heated: No  
Finished: No  
Enclosed: Yes  
Contiguous: Yes  
Permitted: Yes  
Wet space: No  
Addition: No  
Conversion: No

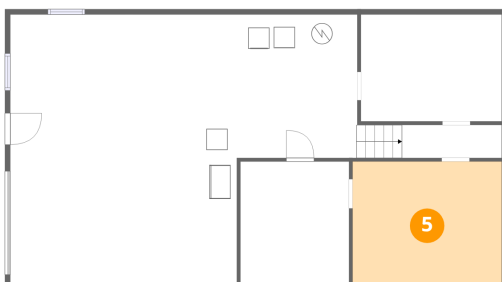
**4** Floor 1 - Room



Dimensions: 9'6" x 3'2"  
Area: 43 sq. ft  
Counted as living area: No

Heated: Yes  
Finished: No  
Enclosed: Yes  
Contiguous: Yes  
Permitted: Yes  
Wet space: No  
Addition: No  
Conversion: No

**5** Floor 1 - Room

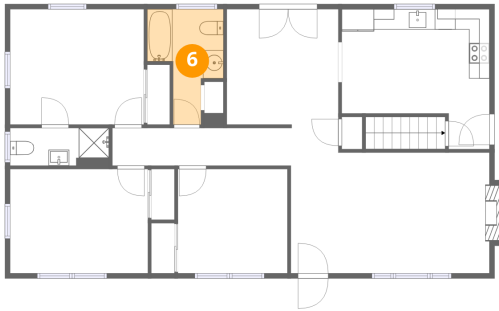


Dimensions: 14'2" x 11'9"  
Area: 167 sq. ft  
Counted as living area: No

Heated: Yes  
Finished: No  
Enclosed: Yes  
Contiguous: Yes  
Permitted: Yes  
Wet space: No  
Addition: No  
Conversion: No

101 Sunnydale Court, Heatherstone, Laymantown, Troutville,  
Botetourt County, Virginia, United States, 24175

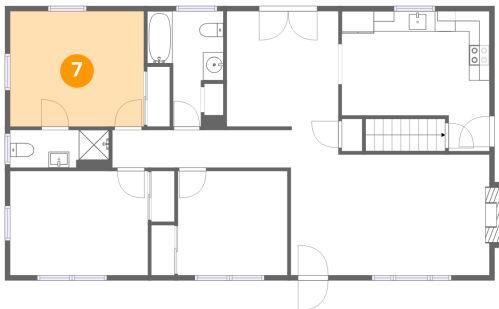
**6** Floor 2 - Bath



Dimensions: 7'5" x 11'3"  
Area: 58 sq. ft  
Counted as living area: Yes

Heated: Yes  
Finished: Yes  
Enclosed: Yes  
Contiguous: Yes  
Permitted: Yes  
Wet space: Yes  
Addition: No  
Conversion: No

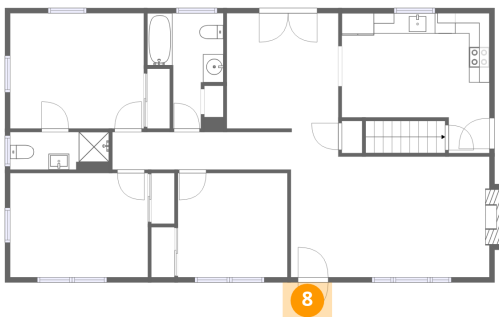
**7** Floor 2 - Primary Bedroom



Dimensions: 13'1" x 11'3"  
Area: 147 sq. ft  
Counted as living area: Yes

Heated: Yes  
Finished: Yes  
Enclosed: Yes  
Contiguous: Yes  
Permitted: Yes  
Wet space: No  
Addition: No  
Conversion: No

**8** Floor 2 - Porch

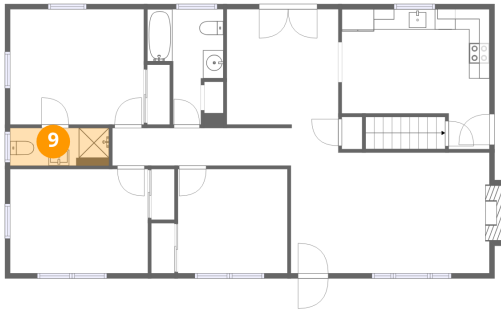


Dimensions: 4'10" x 3'9"  
Area: 18 sq. ft  
Counted as living area: No

Heated: No  
Finished: No  
Enclosed: No  
Contiguous: Yes  
Permitted: Yes  
Wet space: No  
Addition: No  
Conversion: No

101 Sunnydale Court, Heatherstone, Laymantown, Troutville,  
Botetourt County, Virginia, United States, 24175

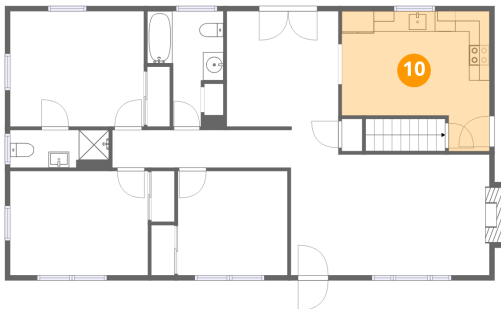
**9** Floor 2 - Bath



Dimensions: 9'8" x 3'8"  
Area: 35 sq. ft  
Counted as living area: Yes

Heated: Yes  
Finished: Yes  
Enclosed: Yes  
Contiguous: Yes  
Permitted: Yes  
Wet space: Yes  
Addition: No  
Conversion: No

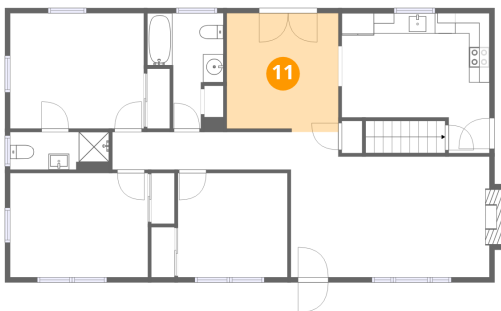
**10** Floor 2 - Kitchen



Dimensions: 14'5" x 13'8"  
Area: 160 sq. ft  
Counted as living area: Yes

Heated: Yes  
Finished: Yes  
Enclosed: Yes  
Contiguous: Yes  
Permitted: Yes  
Wet space: No  
Addition: No  
Conversion: No

**11** Floor 2 - Dining Area

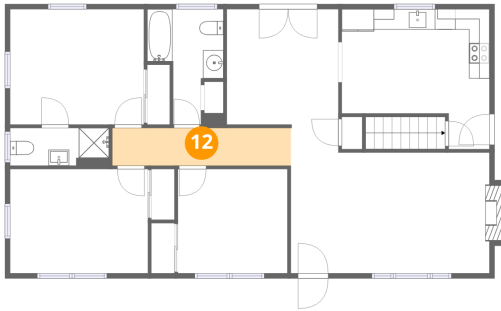


Dimensions: 10'11" x 11'3"  
Area: 124 sq. ft  
Counted as living area: Yes

Heated: Yes  
Finished: Yes  
Enclosed: Yes  
Contiguous: Yes  
Permitted: Yes  
Wet space: No  
Addition: No  
Conversion: No

101 Sunnydale Court, Heatherstone, Laymantown, Troutville,  
Botetourt County, Virginia, United States, 24175

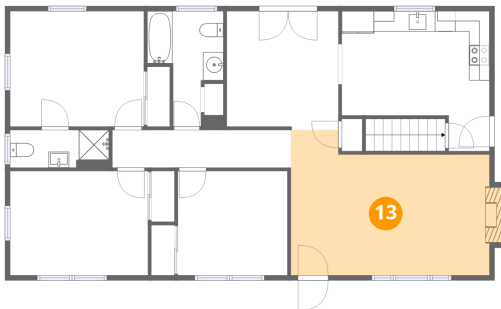
**12** Floor 2 - Hall



Dimensions: 17'5" x 3'8"  
Area: 64 sq. ft  
Counted as living area: Yes

Heated: Yes  
Finished: Yes  
Enclosed: Yes  
Contiguous: Yes  
Permitted: Yes  
Wet space: No  
Addition: No  
Conversion: No

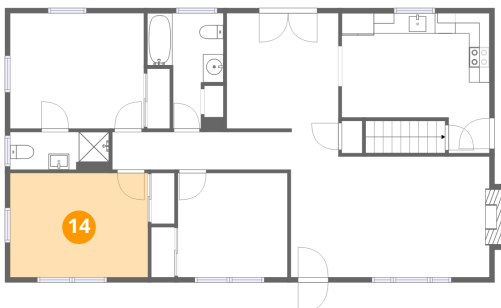
**13** Floor 2 - Living Room



Dimensions: 19'5" x 14'2"  
Area: 246 sq. ft  
Counted as living area: Yes

Heated: Yes  
Finished: Yes  
Enclosed: Yes  
Contiguous: Yes  
Permitted: Yes  
Wet space: No  
Addition: No  
Conversion: No

**14** Floor 2 - Bedroom

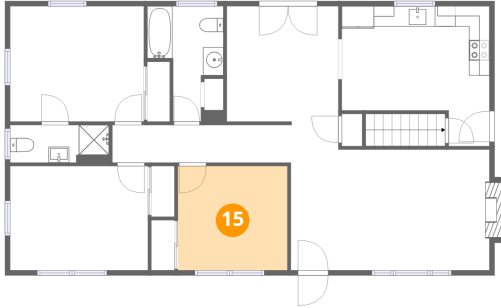


Dimensions: 13'5" x 10'2"  
Area: 137 sq. ft  
Counted as living area: Yes

Heated: Yes  
Finished: Yes  
Enclosed: Yes  
Contiguous: Yes  
Permitted: Yes  
Wet space: No  
Addition: No  
Conversion: No

**101 Sunnydale Court, Heatherstone, Laymantown, Troutville,  
Botetourt County, Virginia, United States, 24175**

**15 Floor 2 - Bedroom**



**Dimensions:** 10'8" x 10'2"  
**Area:** 109 sq. ft  
**Counted as living area:** Yes

**Heated:** Yes  
**Finished:** Yes  
**Enclosed:** Yes  
**Contiguous:** Yes  
**Permitted:** Yes  
**Wet space:** No  
**Addition:** No  
**Conversion:** No