

## Home data report

449 West Fullerton Parkway, Lincoln Park, Chicago, Cook County, Illinois, United States, 60614



**Total Area: 3063 sq. ft**

Basement: 925 sq. ft, 1st Floor: 1242 sq. ft, 2nd Floor: 896 sq. ft

Excluded: Utility 89 sq. ft, Garage 286 sq. ft, Porch 293 sq. ft, Patio 540 sq. ft, Fireplace 12 sq. ft, Walls: 296 sq. ft

## Property summary

 **3** Floors

 **4** Bedrooms

 **4** Bathrooms

Home data report

**449 West Fullerton Parkway, Lincoln Park, Chicago, Cook County, Illinois, United States, 60614**



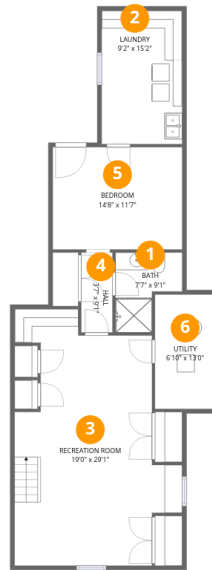
**1**  
Half baths



**1**  
Garages

## Home data report

449 West Fullerton Parkway, Lincoln Park, Chicago, Cook County, Illinois, United States, 60614



## Room dimensions

Floor 1 Below grade

Total:925sqft

Excluded: 89sqft

#		Dimensions	sqft	Counted as living area
1	Bath	7'7" x 9'1"	69 sq. ft	Yes
2	Laundry	9'2" x 15'2"	138 sq. ft	Yes
3	Recreation Room	19'0" x 29'1"	554 sq. ft	Yes
4	Hall	3'7" x 9'1"	32 sq. ft	Yes
5	Bedroom	14'8" x 11'7"	171 sq. ft	Yes
6	Utility	6'10" x 13'0"	89 sq. ft	No

## Home data report

**449 West Fullerton Parkway, Lincoln Park, Chicago, Cook County, Illinois, United States, 60614**



## Room dimensions

Floor 2

Total:1242sqft

Excluded: 1131sqft

#		Dimensions	sqft	Counted as living area
7	Garage	14'3" x 20'1"	286 sq. ft	No
8	Hall	3'4" x 3'6"	12 sq. ft	Yes
9	Living Room	12'10" x 17'5"	223 sq. ft	Yes
10	Room	6'7" x 7'1"	47 sq. ft	Yes
11	Bath	4'10" x 4'6"	22 sq. ft	Yes
12	Patio	22'8" x 24'3"	549 sq. ft	No
13	Porch	25'1" x 25'1"	628 sq. ft	No
14	Sun Room	14'8" x 13'8"	200 sq. ft	Yes
15	Pantry	5'10" x 3'6"	20 sq. ft	Yes
16	Kitchen	17'4" x 16'9"	291 sq. ft	Yes
17	Foyer	5'10" x 20'2"	118 sq. ft	Yes

Home data report

**449 West Fullerton Parkway, Lincoln Park, Chicago, Cook County, Illinois, United States, 60614**

#		Dimensions	sqft	Counted as living area
18	Dining Area	13'4" x 13'0"	173 sq. ft	Yes
19	Office	11'1" x 10'3"	114 sq. ft	Yes

## Home data report

449 West Fullerton Parkway, Lincoln Park, Chicago, Cook County, Illinois, United States, 60614



## Room dimensions

Floor 3

Total:896sqft

Excluded: 0sqft

#		Dimensions	sqft	Counted as living area
20	Primary Bedroom	13'0" x 13'0"	169 sq. ft	Yes
21	Hall	5'7" x 4'1"	23 sq. ft	Yes
22	Bedroom	9'6" x 13'0"	123 sq. ft	Yes
23	Bath	4'6" x 9'1"	41 sq. ft	Yes
24	Bath	5'11" x 9'5"	55 sq. ft	Yes
25	Bath	7'1" x 8'1"	57 sq. ft	Yes
26	Hall	5'7" x 17'6"	98 sq. ft	Yes
27	Bedroom	12'10" x 14'7"	186 sq. ft	Yes

**449 West Fullerton Parkway, Lincoln Park, Chicago, Cook County, Illinois, United States, 60614**

**1 Floor 1 - Bath**

---



**Dimensions:** 7'7" x 9'1"  
**Area:** 69 sq. ft  
**Counted as living area:** Yes

**Heated:** Yes  
**Finished:** Yes  
**Enclosed:** Yes  
**Contiguous:** Yes  
**Permitted:** Yes  
**Wet space:** Yes  
**Addition:** No  
**Conversion:** No

**2 Floor 1 - Laundry**

---



**Dimensions:** 9'2" x 15'2"  
**Area:** 138 sq. ft  
**Counted as living area:** Yes

**Heated:** Yes  
**Finished:** Yes  
**Enclosed:** Yes  
**Contiguous:** Yes  
**Permitted:** Yes  
**Wet space:** No  
**Addition:** No  
**Conversion:** No

449 West Fullerton Parkway, Lincoln Park, Chicago, Cook County, Illinois, United States, 60614

**3** Floor 1 - Recreation Room



Dimensions: 19'0" x 29'1"  
Area: 554 sq. ft  
Counted as living area: Yes

Heated: Yes  
Finished: Yes  
Enclosed: Yes  
Contiguous: Yes  
Permitted: Yes  
Wet space: No  
Addition: No  
Conversion: No

**4** Floor 1 - Hall



Dimensions: 3'7" x 9'1"  
Area: 32 sq. ft  
Counted as living area: Yes

Heated: Yes  
Finished: Yes  
Enclosed: Yes  
Contiguous: Yes  
Permitted: Yes  
Wet space: No  
Addition: No  
Conversion: No

**5** Floor 1 - Bedroom



Dimensions: 14'8" x 11'7"  
Area: 171 sq. ft  
Counted as living area: Yes

Heated: Yes  
Finished: Yes  
Enclosed: Yes  
Contiguous: Yes  
Permitted: Yes  
Wet space: No  
Addition: No  
Conversion: No

449 West Fullerton Parkway, Lincoln Park, Chicago, Cook County, Illinois, United States, 60614

**6** Floor 1 - Utility



Dimensions: 6'10" x 13'0"  
Area: 89 sq. ft  
Counted as living area: No

Heated: Yes  
Finished: No  
Enclosed: Yes  
Contiguous: Yes  
Permitted: Yes  
Wet space: No  
Addition: No  
Conversion: No

**7** Floor 2 - Garage



Dimensions: 14'3" x 20'1"  
Area: 286 sq. ft  
Counted as living area: No

Heated: No  
Finished: No  
Enclosed: Yes  
Contiguous: Yes  
Permitted: Yes  
Wet space: No  
Addition: No  
Conversion: No

**8** Floor 2 - Hall



Dimensions: 3'4" x 3'6"  
Area: 12 sq. ft  
Counted as living area: Yes

Heated: Yes  
Finished: Yes  
Enclosed: Yes  
Contiguous: Yes  
Permitted: Yes  
Wet space: No  
Addition: No  
Conversion: No

449 West Fullerton Parkway, Lincoln Park, Chicago, Cook County, Illinois, United States, 60614

9 Floor 2 - Living Room



Dimensions: 12'10" x 17'5"  
Area: 223 sq. ft  
Counted as living area: Yes

Heated: Yes  
Finished: Yes  
Enclosed: Yes  
Contiguous: Yes  
Permitted: Yes  
Wet space: No  
Addition: No  
Conversion: No

10 Floor 2 - Room



Dimensions: 6'7" x 7'1"  
Area: 47 sq. ft  
Counted as living area: Yes

Heated: Yes  
Finished: Yes  
Enclosed: Yes  
Contiguous: Yes  
Permitted: Yes  
Wet space: No  
Addition: No  
Conversion: No

11 Floor 2 - Bath



Dimensions: 4'10" x 4'6"  
Area: 22 sq. ft  
Counted as living area: Yes

Heated: Yes  
Finished: Yes  
Enclosed: Yes  
Contiguous: Yes  
Permitted: Yes  
Wet space: Yes  
Addition: No  
Conversion: No

449 West Fullerton Parkway, Lincoln Park, Chicago, Cook County, Illinois, United States, 60614

**12** Floor 2 - Patio



Dimensions: 22'8" x 24'3"  
Area: 549 sq. ft  
Counted as living area: No

Heated: No  
Finished: No  
Enclosed: No  
Contiguous: Yes  
Permitted: Yes  
Wet space: No  
Addition: No  
Conversion: No

**13** Floor 2 - Porch



Dimensions: 25'1" x 25'1"  
Area: 628 sq. ft  
Counted as living area: No

Heated: No  
Finished: No  
Enclosed: No  
Contiguous: Yes  
Permitted: Yes  
Wet space: No  
Addition: No  
Conversion: No

**14** Floor 2 - Sun Room



Dimensions: 14'8" x 13'8"  
Area: 200 sq. ft  
Counted as living area: Yes

Heated: Yes  
Finished: Yes  
Enclosed: Yes  
Contiguous: Yes  
Permitted: Yes  
Wet space: No  
Addition: No  
Conversion: No

449 West Fullerton Parkway, Lincoln Park, Chicago, Cook County, Illinois, United States, 60614

**15** Floor 2 - Pantry



Dimensions: 5'10" x 3'6"  
Area: 20 sq. ft  
Counted as living area: Yes

Heated: Yes  
Finished: Yes  
Enclosed: Yes  
Contiguous: Yes  
Permitted: Yes  
Wet space: No  
Addition: No  
Conversion: No

**16** Floor 2 - Kitchen



Dimensions: 17'4" x 16'9"  
Area: 291 sq. ft  
Counted as living area: Yes

Heated: Yes  
Finished: Yes  
Enclosed: Yes  
Contiguous: Yes  
Permitted: Yes  
Wet space: No  
Addition: No  
Conversion: No

**17** Floor 2 - Foyer



Dimensions: 5'10" x 20'2"  
Area: 118 sq. ft  
Counted as living area: Yes

Heated: Yes  
Finished: Yes  
Enclosed: Yes  
Contiguous: Yes  
Permitted: Yes  
Wet space: No  
Addition: No  
Conversion: No

449 West Fullerton Parkway, Lincoln Park, Chicago, Cook County, Illinois, United States, 60614

**18** Floor 2 - Dining Area



Dimensions: 13'4" x 13'0"  
Area: 173 sq. ft  
Counted as living area: Yes

Heated: Yes  
Finished: Yes  
Enclosed: Yes  
Contiguous: Yes  
Permitted: Yes  
Wet space: No  
Addition: No  
Conversion: No

**19** Floor 2 - Office



Dimensions: 11'1" x 10'3"  
Area: 114 sq. ft  
Counted as living area: Yes

Heated: Yes  
Finished: Yes  
Enclosed: Yes  
Contiguous: Yes  
Permitted: Yes  
Wet space: No  
Addition: No  
Conversion: No

**20** Floor 3 - Primary Bedroom



Dimensions: 13'0" x 13'0"  
Area: 169 sq. ft  
Counted as living area: Yes

Heated: Yes  
Finished: Yes  
Enclosed: Yes  
Contiguous: Yes  
Permitted: Yes  
Wet space: No  
Addition: No  
Conversion: No

449 West Fullerton Parkway, Lincoln Park, Chicago, Cook County, Illinois, United States, 60614

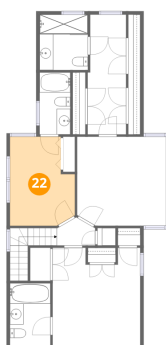
**21** Floor 3 - Hall



Dimensions: 5'7" x 4'1"  
Area: 23 sq. ft  
Counted as living area: Yes

Heated: Yes  
Finished: Yes  
Enclosed: Yes  
Contiguous: Yes  
Permitted: Yes  
Wet space: No  
Addition: No  
Conversion: No

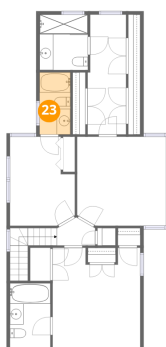
**22** Floor 3 - Bedroom



Dimensions: 9'6" x 13'0"  
Area: 123 sq. ft  
Counted as living area: Yes

Heated: Yes  
Finished: Yes  
Enclosed: Yes  
Contiguous: Yes  
Permitted: Yes  
Wet space: No  
Addition: No  
Conversion: No

**23** Floor 3 - Bath

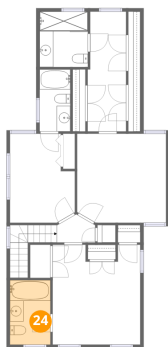


Dimensions: 4'6" x 9'1"  
Area: 41 sq. ft  
Counted as living area: Yes

Heated: Yes  
Finished: Yes  
Enclosed: Yes  
Contiguous: Yes  
Permitted: Yes  
Wet space: Yes  
Addition: No  
Conversion: No

# 449 West Fullerton Parkway, Lincoln Park, Chicago, Cook County, Illinois, United States, 60614

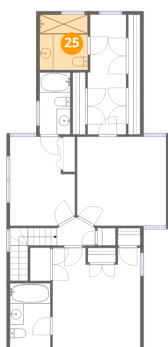
## 24 Floor 3 - Bath



Dimensions: 5'11" x 9'5"  
Area: 55 sq. ft  
Counted as living area: Yes

Heated: Yes  
Finished: Yes  
Enclosed: Yes  
Contiguous: Yes  
Permitted: Yes  
Wet space: Yes  
Addition: No  
Conversion: No

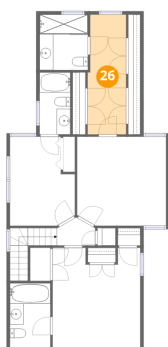
## 25 Floor 3 - Bath



Dimensions: 7'1" x 8'1"  
Area: 57 sq. ft  
Counted as living area: Yes

Heated: Yes  
Finished: Yes  
Enclosed: Yes  
Contiguous: Yes  
Permitted: Yes  
Wet space: Yes  
Addition: No  
Conversion: No

## 26 Floor 3 - Hall



Dimensions: 5'7" x 17'6"  
Area: 98 sq. ft  
Counted as living area: Yes

Heated: Yes  
Finished: Yes  
Enclosed: Yes  
Contiguous: Yes  
Permitted: Yes  
Wet space: No  
Addition: No  
Conversion: No

Home data report

**449 West Fullerton Parkway, Lincoln Park, Chicago, Cook  
County, Illinois, United States, 60614**

**27 Floor 3 - Bedroom**

---



**Dimensions: 12'10" x 14'7"**  
**Area: 186 sq. ft**  
**Counted as living area: Yes**

**Heated: Yes**  
**Finished: Yes**  
**Enclosed: Yes**  
**Contiguous: Yes**  
**Permitted: Yes**  
**Wet space: No**  
**Addition: No**  
**Conversion: No**