

Home report

5309 Rock Harbour Road, Woodlake, Midlothian, Chesterfield  
County, Virginia, United States, 23112



Total Area: 2085 sq. ft

Floor 1: 975 sq. ft, Floor 2: 1110 sq. ft

Excluded: Garage 311 sq. ft, Embedded window 7 sq. ft, Fireplace 9 sq. ft, Walls: 166 sq. ft

Property summary

 **2** Floors

 **4** Bedrooms

 **2** Bathrooms

Home report

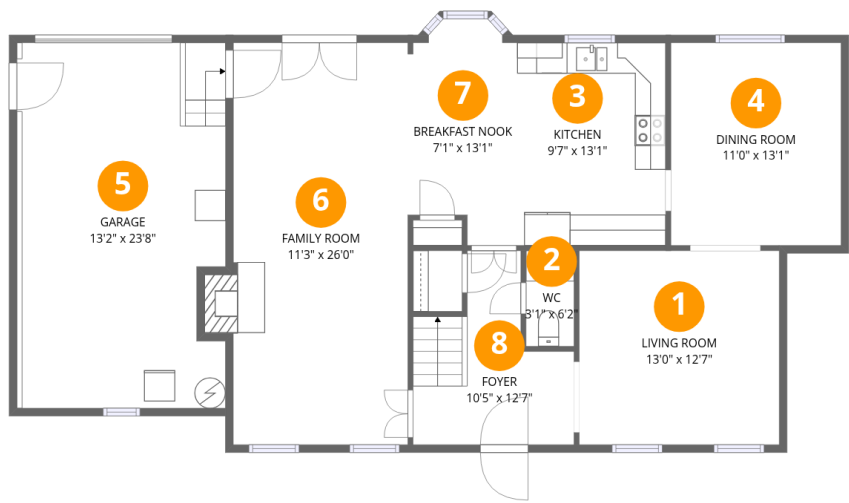
5309 Rock Harbour Road, Woodlake, Midlothian, Chesterfield  
County, Virginia, United States, 23112

 **1**  
Half baths

 **1**  
Garages

Home report

5309 Rock Harbour Road, Woodlake, Midlothian, Chesterfield County, Virginia, United States, 23112



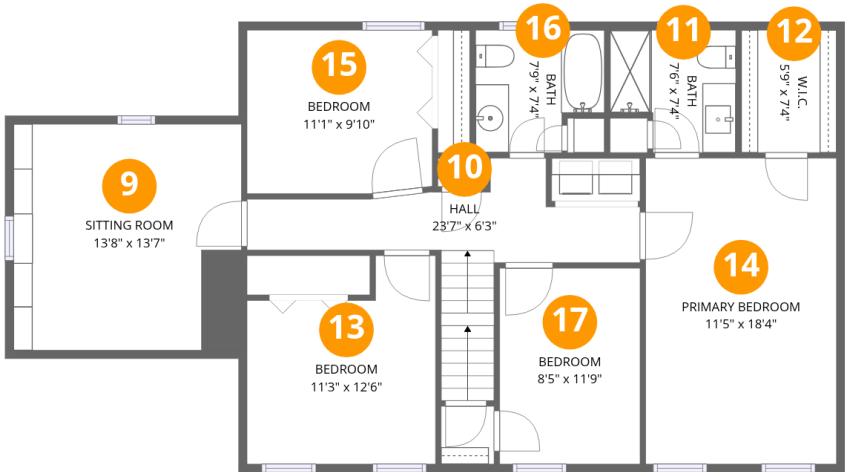
Room dimensions

Floor 1 Total:975sqft Excluded: 327sqft

#		Max Dimensions	sqft	Included
1	Living Room	13'0" x 12'7"	163 sq. ft	Yes
2	WC	3'1" x 6'2"	19 sq. ft	Yes
3	Kitchen	9'7" x 13'1"	126 sq. ft	Yes
4	Dining Room	11'0" x 13'1"	145 sq. ft	Yes
5	Garage	13'2" x 23'8"	311 sq. ft	No
6	Family Room	11'3" x 26'0"	301 sq. ft	Yes
7	Breakfast Nook	7'1" x 13'1"	85 sq. ft	Yes
8	Foyer	10'5" x 12'7"	94 sq. ft	Yes

Home report

5309 Rock Harbour Road, Woodlake, Midlothian, Chesterfield County, Virginia, United States, 23112



Room dimensions

Floor 2

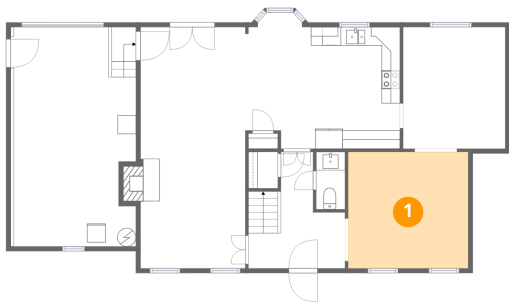
Total:1110sqft

Excluded: 0sqft

#		Max Dimensions	sqft	Included
9	Sitting Room	13'8" x 13'7"	171 sq. ft	Yes
10	Hall	23'7" x 6'3"	115 sq. ft	Yes
11	Bath	7'6" x 7'4"	49 sq. ft	Yes
12	W.I.C.	5'9" x 7'4"	42 sq. ft	Yes
13	Bedroom	11'3" x 12'6"	121 sq. ft	Yes
14	Primary Bedroom	11'5" x 18'4"	210 sq. ft	Yes
15	Bedroom	11'1" x 9'10"	108 sq. ft	Yes
16	Bath	7'9" x 7'4"	51 sq. ft	Yes
17	Bedroom	8'5" x 11'9"	99 sq. ft	Yes

5309 Rock Harbour Road, Woodlake, Midlothian, Chesterfield  
County, Virginia, United States, 23112

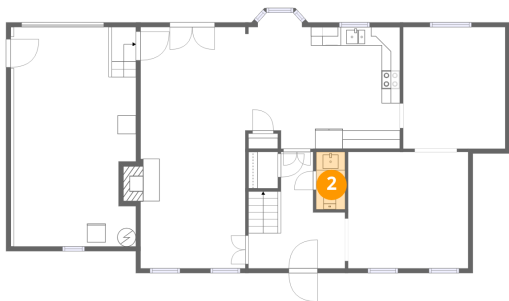
1 Floor 1 - Living Room



Max Dimensions: 13'0" x 12'7"  
Calculated Area: 163 sq. ft  
Included: Yes

Heated: Yes  
Finished: Yes  
Enclosed: Yes  
Contiguous: Yes  
Permitted: Yes  
Wet space: No  
Addition: No  
Conversion: No

2 Floor 1 - WC

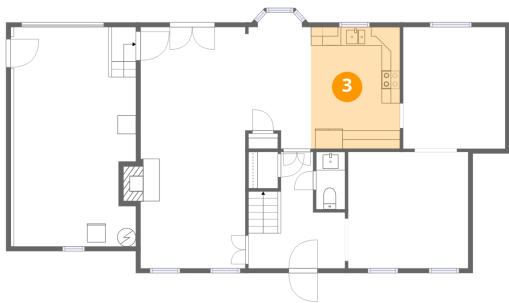


Max Dimensions: 3'1" x 6'2"  
Calculated Area: 19 sq. ft  
Included: Yes

Heated: Yes  
Finished: Yes  
Enclosed: Yes  
Contiguous: Yes  
Permitted: Yes  
Wet space: Yes  
Addition: No  
Conversion: No

5309 Rock Harbour Road, Woodlake, Midlothian, Chesterfield County, Virginia, United States, 23112

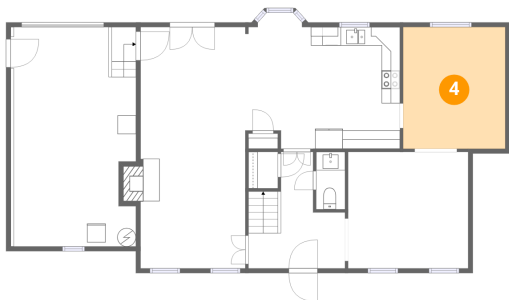
3 Floor 1 - Kitchen



Max Dimensions: 9'7" x 13'1"  
Calculated Area: 126 sq. ft  
Included: Yes

Heated: Yes  
Finished: Yes  
Enclosed: Yes  
Contiguous: Yes  
Permitted: Yes  
Wet space: No  
Addition: No  
Conversion: No

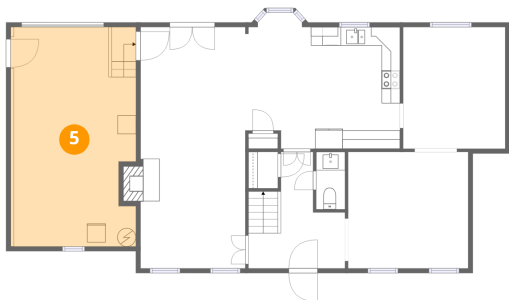
4 Floor 1 - Dining Room



Max Dimensions: 11'0" x 13'1"  
Calculated Area: 145 sq. ft  
Included: Yes

Heated: Yes  
Finished: Yes  
Enclosed: Yes  
Contiguous: Yes  
Permitted: Yes  
Wet space: No  
Addition: No  
Conversion: No

5 Floor 1 - Garage

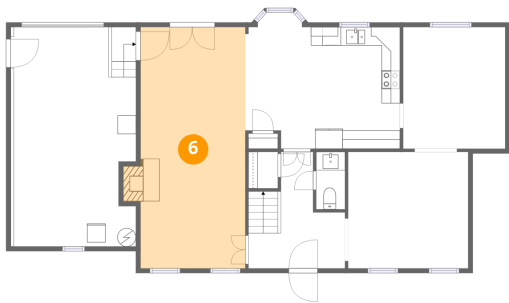


Max Dimensions: 13'2" x 23'8"  
Calculated Area: 311 sq. ft  
Included: No

Heated: No  
Finished: No  
Enclosed: Yes  
Contiguous: Yes  
Permitted: Yes  
Wet space: No  
Addition: No  
Conversion: No

5309 Rock Harbour Road, Woodlake, Midlothian, Chesterfield County, Virginia, United States, 23112

6 Floor 1 - Family Room



Max Dimensions: 11'3" x 26'0"  
Calculated Area: 301 sq. ft  
Included: Yes

Heated: Yes  
Finished: Yes  
Enclosed: Yes  
Contiguous: Yes  
Permitted: Yes  
Wet space: No  
Addition: No  
Conversion: No

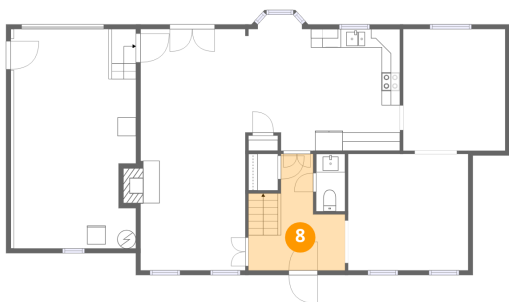
7 Floor 1 - Breakfast Nook



Max Dimensions: 7'1" x 13'1"  
Calculated Area: 85 sq. ft  
Included: Yes

Heated: Yes  
Finished: Yes  
Enclosed: Yes  
Contiguous: Yes  
Permitted: Yes  
Wet space: No  
Addition: No  
Conversion: No

8 Floor 1 - Foyer

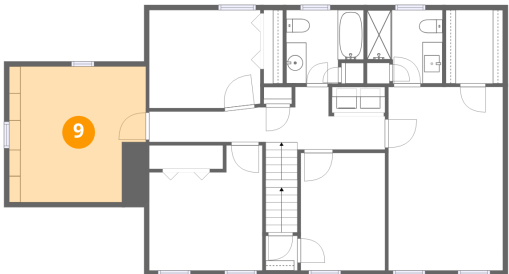


Max Dimensions: 10'5" x 12'7"  
Calculated Area: 94 sq. ft  
Included: Yes

Heated: Yes  
Finished: Yes  
Enclosed: Yes  
Contiguous: Yes  
Permitted: Yes  
Wet space: No  
Addition: No  
Conversion: No

5309 Rock Harbour Road, Woodlake, Midlothian, Chesterfield  
County, Virginia, United States, 23112

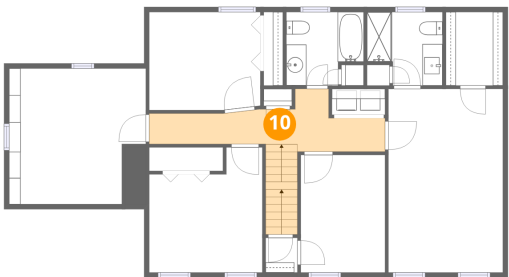
9 Floor 2 - Sitting Room



Max Dimensions: 13'8" x 13'7"  
Calculated Area: 171 sq. ft  
Included: Yes

Heated: Yes  
Finished: Yes  
Enclosed: Yes  
Contiguous: Yes  
Permitted: Yes  
Wet space: No  
Addition: No  
Conversion: No

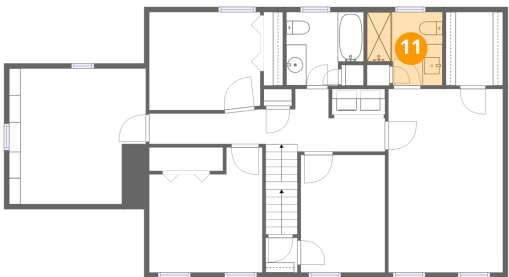
10 Floor 2 - Hall



Max Dimensions: 23'7" x 6'3"  
Calculated Area: 115 sq. ft  
Included: Yes

Heated: Yes  
Finished: Yes  
Enclosed: Yes  
Contiguous: Yes  
Permitted: Yes  
Wet space: No  
Addition: No  
Conversion: No

11 Floor 2 - Bath



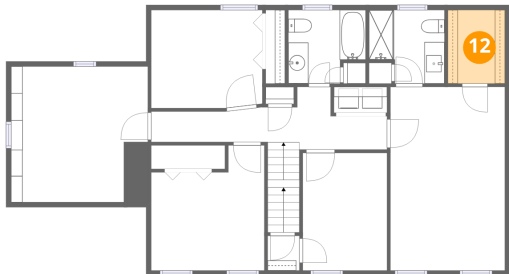
Max Dimensions: 7'6" x 7'4"  
Calculated Area: 49 sq. ft  
Included: Yes

Heated: Yes  
Finished: Yes  
Enclosed: Yes  
Contiguous: Yes  
Permitted: Yes  
Wet space: Yes  
Addition: No  
Conversion: No



5309 Rock Harbour Road, Woodlake, Midlothian, Chesterfield  
County, Virginia, United States, 23112

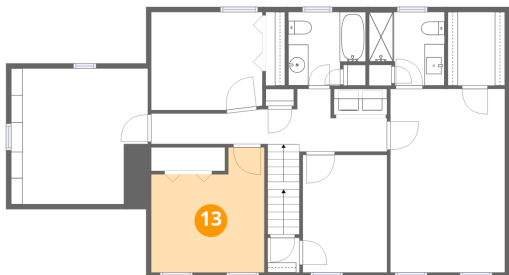
12 Floor 2 - W.I.C.



Max Dimensions: 5'9" x 7'4"  
Calculated Area: 42 sq. ft  
Included: Yes

Heated: Yes  
Finished: Yes  
Enclosed: Yes  
Contiguous: Yes  
Permitted: Yes  
Wet space: No  
Addition: No  
Conversion: No

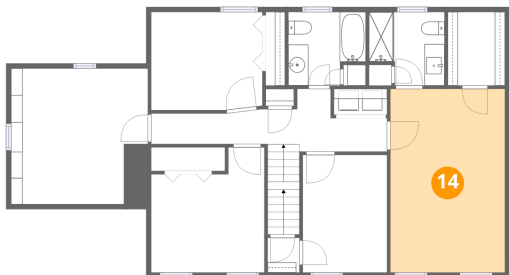
13 Floor 2 - Bedroom



Max Dimensions: 11'3" x 12'6"  
Calculated Area: 121 sq. ft  
Included: Yes

Heated: Yes  
Finished: Yes  
Enclosed: Yes  
Contiguous: Yes  
Permitted: Yes  
Wet space: No  
Addition: No  
Conversion: No

14 Floor 2 - Primary Bedroom

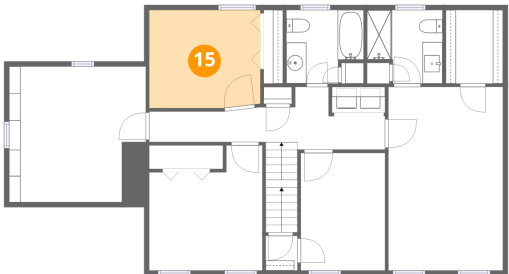


Max Dimensions: 11'5" x 18'4"  
Calculated Area: 210 sq. ft  
Included: Yes

Heated: Yes  
Finished: Yes  
Enclosed: Yes  
Contiguous: Yes  
Permitted: Yes  
Wet space: No  
Addition: No  
Conversion: No

5309 Rock Harbour Road, Woodlake, Midlothian, Chesterfield  
County, Virginia, United States, 23112

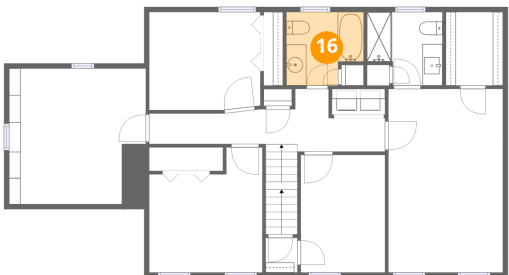
15 Floor 2 - Bedroom



Max Dimensions: 11'1" x 9'10"  
Calculated Area: 108 sq. ft  
Included: Yes

Heated: Yes  
Finished: Yes  
Enclosed: Yes  
Contiguous: Yes  
Permitted: Yes  
Wet space: No  
Addition: No  
Conversion: No

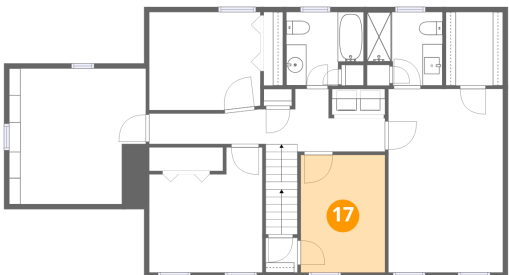
16 Floor 2 - Bath



Max Dimensions: 7'9" x 7'4"  
Calculated Area: 51 sq. ft  
Included: Yes

Heated: Yes  
Finished: Yes  
Enclosed: Yes  
Contiguous: Yes  
Permitted: Yes  
Wet space: Yes  
Addition: No  
Conversion: No

17 Floor 2 - Bedroom



Max Dimensions: 8'5" x 11'9"  
Calculated Area: 99 sq. ft  
Included: Yes

Heated: Yes  
Finished: Yes  
Enclosed: Yes  
Contiguous: Yes  
Permitted: Yes  
Wet space: No  
Addition: No  
Conversion: No