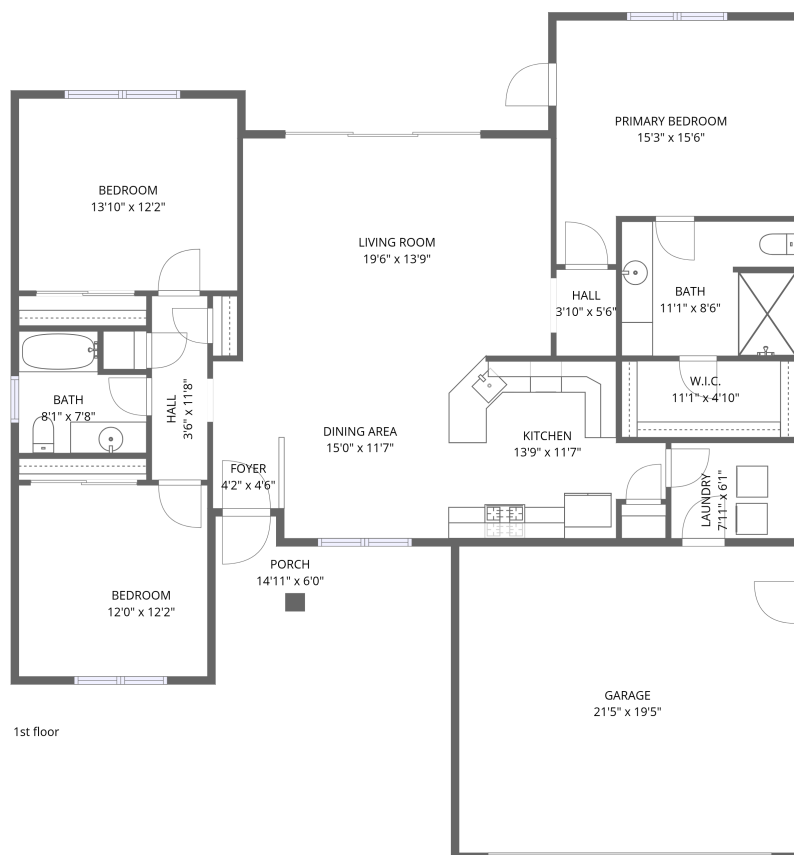


Home data report

1794 Key Dr, Medford, OR, US



**Total Area: 1496 sq. ft**

1st Floor: 1496 sq. ft

Excluded: Garage 416 sq. ft, Porch 69 sq. ft, Walls: 126 sq. ft

## Property summary



**1** Floors



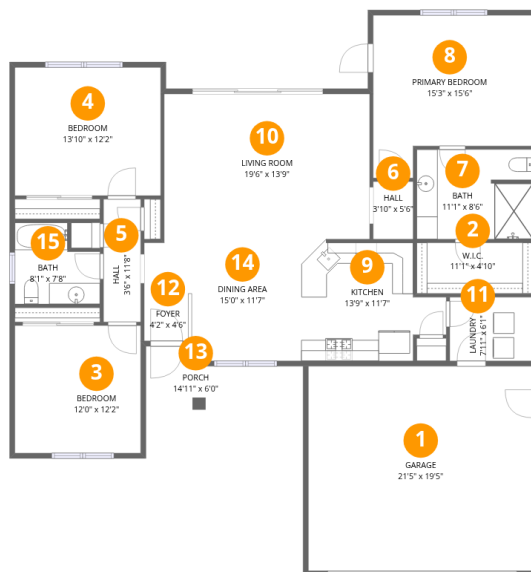
**3** Bedrooms



**2** Bathrooms



**1** Garages



## Room dimensions

Floor 1

Total: 1496sqft Excluded: 485sqft

#		Dimensions	sqft	Counted as living area
1	Garage	21'5" x 19'5"	415 sq. ft	No
2	W.I.C.	11'1" x 4'10"	53 sq. ft	Yes
3	Bedroom	12'0" x 12'2"	145 sq. ft	Yes
4	Bedroom	13'10" x 12'2"	169 sq. ft	Yes
5	Hall	3'6" x 11'8"	41 sq. ft	Yes
6	Hall	3'10" x 5'6"	21 sq. ft	Yes
7	Bath	11'1" x 8'6"	94 sq. ft	Yes
8	Primary Bedroom	15'3" x 15'6"	236 sq. ft	Yes
9	Kitchen	13'9" x 11'7"	159 sq. ft	Yes
10	Living Room	19'6" x 13'9"	269 sq. ft	Yes
11	Laundry	7'11" x 6'1"	48 sq. ft	Yes

Home data report

**1794 Key Dr,Medford,OR,US**

#		Dimensions	sqft	Counted as living area
12	Foyer	4'2" x 4'6"	19 sq. ft	Yes
13	Porch	14'11" x 6'0"	90 sq. ft	No
14	Dining Area	15'0" x 11'7"	173 sq. ft	Yes
15	Bath	8'1" x 7'8"	62 sq. ft	Yes

## 1 Floor 1 - Garage



Dimensions: 21'5" x 19'5"  
Area: 415 sq. ft  
Counted as living area: No

Heated: No  
Finished: No  
Enclosed: Yes  
Contiguous: Yes  
Permitted: Yes  
Wet space: No  
Addition: No  
Conversion: No

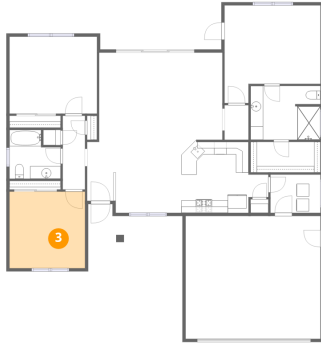
## 2 Floor 1 - W.I.C.



Dimensions: 11'1" x 4'10"  
Area: 53 sq. ft  
Counted as living area: Yes

Heated: Yes  
Finished: Yes  
Enclosed: Yes  
Contiguous: Yes  
Permitted: Yes  
Wet space: No  
Addition: No  
Conversion: No

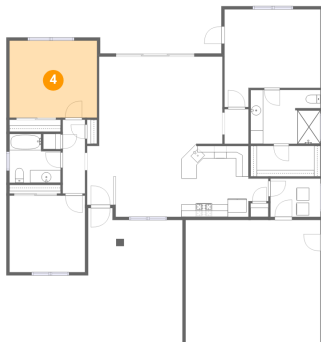
### 3 Floor 1 - Bedroom



Dimensions: 12'0" x 12'2"  
Area: 145 sq. ft  
Counted as living area: Yes

Heated: Yes  
Finished: Yes  
Enclosed: Yes  
Contiguous: Yes  
Permitted: Yes  
Wet space: No  
Addition: No  
Conversion: No

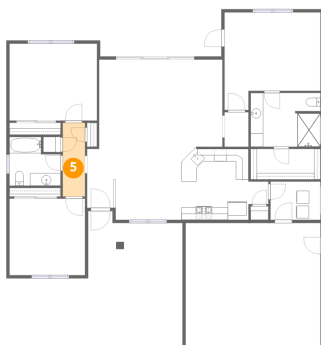
### 4 Floor 1 - Bedroom



Dimensions: 13'10" x 12'2"  
Area: 169 sq. ft  
Counted as living area: Yes

Heated: Yes  
Finished: Yes  
Enclosed: Yes  
Contiguous: Yes  
Permitted: Yes  
Wet space: No  
Addition: No  
Conversion: No

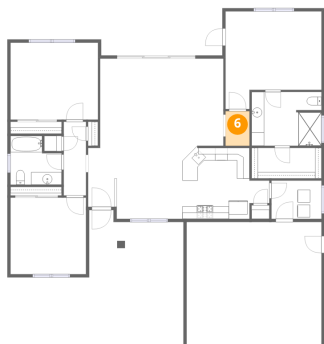
### 5 Floor 1 - Hall



Dimensions: 3'6" x 11'8"  
Area: 41 sq. ft  
Counted as living area: Yes

Heated: Yes  
Finished: Yes  
Enclosed: Yes  
Contiguous: Yes  
Permitted: Yes  
Wet space: No  
Addition: No  
Conversion: No

## 6 Floor 1 - Hall



Dimensions: 3'10" x 5'6"  
Area: 21 sq. ft  
Counted as living area: Yes

Heated: Yes  
Finished: Yes  
Enclosed: Yes  
Contiguous: Yes  
Permitted: Yes  
Wet space: No  
Addition: No  
Conversion: No

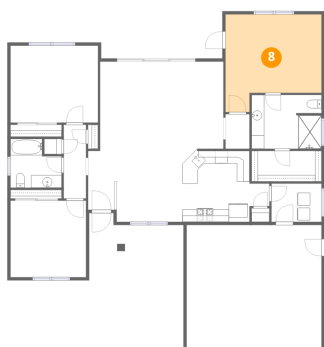
## 7 Floor 1 - Bath



Dimensions: 11'1" x 8'6"  
Area: 94 sq. ft  
Counted as living area: Yes

Heated: Yes  
Finished: Yes  
Enclosed: Yes  
Contiguous: Yes  
Permitted: Yes  
Wet space: Yes  
Addition: No  
Conversion: No

## 8 Floor 1 - Primary Bedroom



Dimensions: 15'3" x 15'6"  
Area: 236 sq. ft  
Counted as living area: Yes

Heated: Yes  
Finished: Yes  
Enclosed: Yes  
Contiguous: Yes  
Permitted: Yes  
Wet space: No  
Addition: No  
Conversion: No

### 9 Floor 1 - Kitchen



Dimensions: 13'9" x 11'7"  
Area: 159 sq. ft  
Counted as living area: Yes

Heated: Yes  
Finished: Yes  
Enclosed: Yes  
Contiguous: Yes  
Permitted: Yes  
Wet space: No  
Addition: No  
Conversion: No

### 10 Floor 1 - Living Room



Dimensions: 19'6" x 13'9"  
Area: 269 sq. ft  
Counted as living area: Yes

Heated: Yes  
Finished: Yes  
Enclosed: Yes  
Contiguous: Yes  
Permitted: Yes  
Wet space: No  
Addition: No  
Conversion: No

### 11 Floor 1 - Laundry



Dimensions: 7'11" x 6'1"  
Area: 48 sq. ft  
Counted as living area: Yes

Heated: Yes  
Finished: Yes  
Enclosed: Yes  
Contiguous: Yes  
Permitted: Yes  
Wet space: No  
Addition: No  
Conversion: No

## 12 Floor 1 - Foyer



Dimensions: 4'2" x 4'6"  
Area: 19 sq. ft  
Counted as living area: Yes

Heated: Yes  
Finished: Yes  
Enclosed: Yes  
Contiguous: Yes  
Permitted: Yes  
Wet space: No  
Addition: No  
Conversion: No

## 13 Floor 1 - Porch



Dimensions: 14'11" x 6'0"  
Area: 90 sq. ft  
Counted as living area: No

Heated: No  
Finished: No  
Enclosed: No  
Contiguous: Yes  
Permitted: Yes  
Wet space: No  
Addition: No  
Conversion: No

## 14 Floor 1 - Dining Area

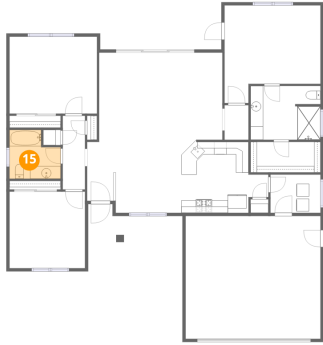


Dimensions: 15'0" x 11'7"  
Area: 173 sq. ft  
Counted as living area: Yes

Heated: Yes  
Finished: Yes  
Enclosed: Yes  
Contiguous: Yes  
Permitted: Yes  
Wet space: No  
Addition: No  
Conversion: No

**15** Floor 1 - Bath

---



**Dimensions:** 8'1" x 7'8"  
**Area:** 62 sq. ft  
**Counted as living area:** Yes

**Heated:** Yes  
**Finished:** Yes  
**Enclosed:** Yes  
**Contiguous:** Yes  
**Permitted:** Yes  
**Wet space:** Yes  
**Addition:** No  
**Conversion:** No