

## Home data report

187 Meadow Brook Lane, Pickens, Pickens County, South Carolina, United States, 29671



**Total Area: 3079 sq. ft**

1st Floor: 2109 sq. ft, 2nd Floor: 970 sq. ft

Excluded: Screened porch 161 sq. ft, Porch 422 sq. ft, Patio 601 sq. ft, Garage 644 sq. ft, Fireplace 15 sq. ft, Open to below 254 sq. ft

## Property summary



Home data report

**187 Meadow Brook Lane, Pickens, Pickens County, South  
Carolina, United States, 29671**

 **1**  
Half baths

 **1**  
Garages

## Home data report

**187 Meadow Brook Lane, Pickens, Pickens County, South Carolina, United States, 29671**



## Room dimensions

Floor 1

Total:2109sqft

Excluded: 1843sqft

#		Dimensions	sqft	Counted as living area
1	Hall	5'4" x 3'10"	20 sq. ft	Yes
2	Room	5'6" x 9'2"	51 sq. ft	Yes
3	Bath	4'7" x 5'4"	24 sq. ft	Yes
4	Laundry	9'1" x 11'3"	75 sq. ft	Yes
5	Foyer	5'10" x 14'1"	82 sq. ft	Yes
6	Porch	33'11" x 7'1"	272 sq. ft	No
7	W.I.C.	8'4" x 11'3"	94 sq. ft	Yes
8	Primary Bath	12'6" x 13'6"	152 sq. ft	Yes
9	Dining Room	13'7" x 14'1"	191 sq. ft	Yes
10	Screened Porch	21'0" x 7'9"	148 sq. ft	No
11	Office	12'11" x 14'1"	181 sq. ft	Yes

Scan captured on Wed, 29 Apr 2026 16:12:11 GMT

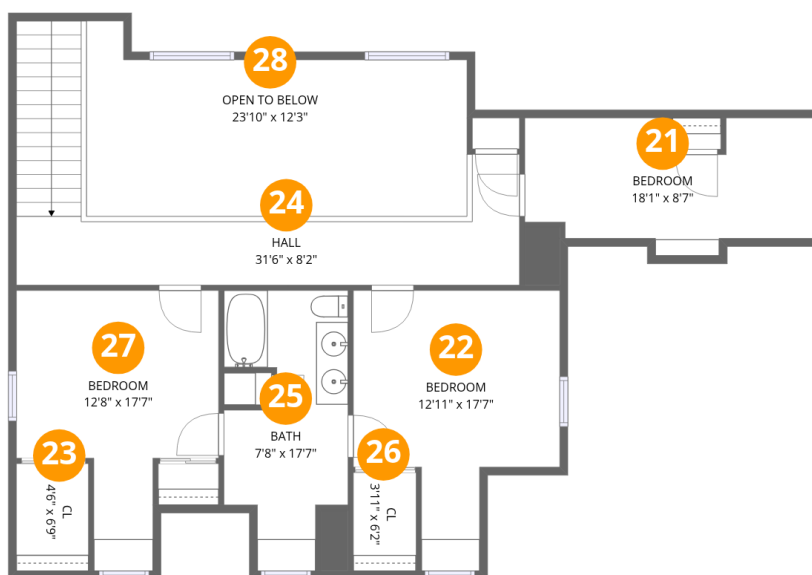
Measurements created via app - measurements deemed highly reliable but not guaranteed

Home data report

**187 Meadow Brook Lane, Pickens, Pickens County, South Carolina, United States, 29671**

#		Dimensions	sqft	Counted as living area
12	Porch	21'7" x 6'11"	150 sq. ft	No
13	Bath	5'6" x 9'7"	52 sq. ft	Yes
14	Kitchen	18'10" x 22'1"	227 sq. ft	Yes
15	Garage	23'1" x 26'2"	604 sq. ft	No
16	Patio	42'10" x 25'8"	601 sq. ft	No
17	Primary Bedroom	15'7" x 17'9"	259 sq. ft	Yes
18	Breakfast Nook	15'2" x 7'2"	93 sq. ft	Yes
19	Living Room	28'4" x 19'9"	389 sq. ft	Yes
20	Pantry	3'0" x 5'0"	15 sq. ft	Yes

**187 Meadow Brook Lane, Pickens, Pickens County, South Carolina, United States, 29671**



**Room dimensions**

Floor 2

Total:970sqft

Excluded: 254sqft

#		Dimensions	sqft	Counted as living area
21	Bedroom	18'1" x 8'7"	130 sq. ft	Yes
22	Bedroom	12'11" x 17'7"	166 sq. ft	Yes
23	Cl	4'6" x 6'9"	30 sq. ft	Yes
24	Hall	31'6" x 8'2"	188 sq. ft	Yes
25	Bath	7'8" x 17'7"	110 sq. ft	Yes
26	Cl	3'11" x 6'2"	24 sq. ft	Yes
27	Bedroom	12'8" x 17'7"	159 sq. ft	Yes
28	Open To Below	23'10" x 12'3"	239 sq. ft	No

# 187 Meadow Brook Lane, Pickens, Pickens County, South Carolina, United States, 29671

## 1 Floor 1 - Hall

---



Dimensions: 5'4" x 3'10"  
Area: 20 sq. ft  
Counted as living area: Yes

Heated: Yes  
Finished: Yes  
Enclosed: Yes  
Contiguous: Yes  
Permitted: Yes  
Wet space: No  
Addition: No  
Conversion: No

## 2 Floor 1 - Room

---



Dimensions: 5'6" x 9'2"  
Area: 51 sq. ft  
Counted as living area: Yes

Heated: Yes  
Finished: Yes  
Enclosed: Yes  
Contiguous: Yes  
Permitted: Yes  
Wet space: No  
Addition: No  
Conversion: No

187 Meadow Brook Lane, Pickens, Pickens County, South Carolina, United States, 29671

3 Floor 1 - Bath



Dimensions: 4'7" x 5'4"  
Area: 24 sq. ft  
Counted as living area: Yes

Heated: Yes  
Finished: Yes  
Enclosed: Yes  
Contiguous: Yes  
Permitted: Yes  
Wet space: Yes  
Addition: No  
Conversion: No

4 Floor 1 - Laundry



Dimensions: 9'1" x 11'3"  
Area: 75 sq. ft  
Counted as living area: Yes

Heated: Yes  
Finished: Yes  
Enclosed: Yes  
Contiguous: Yes  
Permitted: Yes  
Wet space: No  
Addition: No  
Conversion: No

5 Floor 1 - Foyer



Dimensions: 5'10" x 14'1"  
Area: 82 sq. ft  
Counted as living area: Yes

Heated: Yes  
Finished: Yes  
Enclosed: Yes  
Contiguous: Yes  
Permitted: Yes  
Wet space: No  
Addition: No  
Conversion: No

187 Meadow Brook Lane, Pickens, Pickens County, South Carolina, United States, 29671

6 Floor 1 - Porch



Dimensions: 33'11" x 7'1"  
Area: 272 sq. ft  
Counted as living area: No

Heated: No  
Finished: No  
Enclosed: No  
Contiguous: Yes  
Permitted: Yes  
Wet space: No  
Addition: No  
Conversion: No

7 Floor 1 - W.I.C.



Dimensions: 8'4" x 11'3"  
Area: 94 sq. ft  
Counted as living area: Yes

Heated: Yes  
Finished: Yes  
Enclosed: Yes  
Contiguous: Yes  
Permitted: Yes  
Wet space: No  
Addition: No  
Conversion: No

8 Floor 1 - Primary Bath



Dimensions: 12'6" x 13'6"  
Area: 152 sq. ft  
Counted as living area: Yes

Heated: Yes  
Finished: Yes  
Enclosed: Yes  
Contiguous: Yes  
Permitted: Yes  
Wet space: Yes  
Addition: No  
Conversion: No

187 Meadow Brook Lane, Pickens, Pickens County, South Carolina, United States, 29671

9 Floor 1 - Dining Room



Dimensions: 13'7" x 14'1"  
Area: 191 sq. ft  
Counted as living area: Yes

Heated: Yes  
Finished: Yes  
Enclosed: Yes  
Contiguous: Yes  
Permitted: Yes  
Wet space: No  
Addition: No  
Conversion: No

10 Floor 1 - Screened Porch



Dimensions: 21'0" x 7'9"  
Area: 148 sq. ft  
Counted as living area: No

Heated: No  
Finished: No  
Enclosed: No  
Contiguous: Yes  
Permitted: Yes  
Wet space: No  
Addition: No  
Conversion: No

11 Floor 1 - Office



Dimensions: 12'11" x 14'1"  
Area: 181 sq. ft  
Counted as living area: Yes

Heated: Yes  
Finished: Yes  
Enclosed: Yes  
Contiguous: Yes  
Permitted: Yes  
Wet space: No  
Addition: No  
Conversion: No

187 Meadow Brook Lane, Pickens, Pickens County, South Carolina, United States, 29671

12 Floor 1 - Porch



Dimensions: 21'7" x 6'11"  
Area: 150 sq. ft  
Counted as living area: No

Heated: No  
Finished: No  
Enclosed: No  
Contiguous: Yes  
Permitted: Yes  
Wet space: No  
Addition: No  
Conversion: No

13 Floor 1 - Bath



Dimensions: 5'6" x 9'7"  
Area: 52 sq. ft  
Counted as living area: Yes

Heated: Yes  
Finished: Yes  
Enclosed: Yes  
Contiguous: Yes  
Permitted: Yes  
Wet space: Yes  
Addition: No  
Conversion: No

14 Floor 1 - Kitchen



Dimensions: 18'10" x 22'1"  
Area: 227 sq. ft  
Counted as living area: Yes

Heated: Yes  
Finished: Yes  
Enclosed: Yes  
Contiguous: Yes  
Permitted: Yes  
Wet space: No  
Addition: No  
Conversion: No

# 187 Meadow Brook Lane, Pickens, Pickens County, South Carolina, United States, 29671

## 15 Floor 1 - Garage



Dimensions: 23'1" x 26'2"  
Area: 604 sq. ft  
Counted as living area: No

Heated: No  
Finished: No  
Enclosed: Yes  
Contiguous: Yes  
Permitted: Yes  
Wet space: No  
Addition: No  
Conversion: No

## 16 Floor 1 - Patio



Dimensions: 42'10" x 25'8"  
Area: 601 sq. ft  
Counted as living area: No

Heated: No  
Finished: No  
Enclosed: No  
Contiguous: Yes  
Permitted: Yes  
Wet space: No  
Addition: No  
Conversion: No

## 17 Floor 1 - Primary Bedroom



Dimensions: 15'7" x 17'9"  
Area: 259 sq. ft  
Counted as living area: Yes

Heated: Yes  
Finished: Yes  
Enclosed: Yes  
Contiguous: Yes  
Permitted: Yes  
Wet space: No  
Addition: No  
Conversion: No

187 Meadow Brook Lane, Pickens, Pickens County, South Carolina, United States, 29671

**18** Floor 1 - Breakfast Nook



Dimensions: 15'2" x 7'2"  
Area: 93 sq. ft  
Counted as living area: Yes

Heated: Yes  
Finished: Yes  
Enclosed: Yes  
Contiguous: Yes  
Permitted: Yes  
Wet space: No  
Addition: No  
Conversion: No

**19** Floor 1 - Living Room



Dimensions: 28'4" x 19'9"  
Area: 389 sq. ft  
Counted as living area: Yes

Heated: Yes  
Finished: Yes  
Enclosed: Yes  
Contiguous: Yes  
Permitted: Yes  
Wet space: No  
Addition: No  
Conversion: No

**20** Floor 1 - Pantry

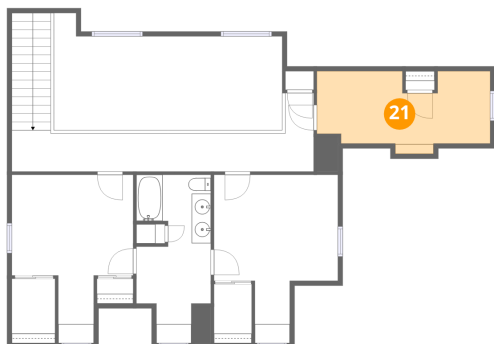


Dimensions: 3'0" x 5'0"  
Area: 15 sq. ft  
Counted as living area: Yes

Heated: Yes  
Finished: Yes  
Enclosed: Yes  
Contiguous: Yes  
Permitted: Yes  
Wet space: No  
Addition: No  
Conversion: No

# 187 Meadow Brook Lane, Pickens, Pickens County, South Carolina, United States, 29671

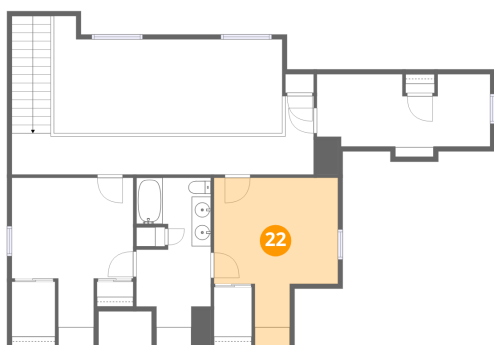
## 21 Floor 2 - Bedroom



Dimensions: 18'1" x 8'7"  
Area: 130 sq. ft  
Counted as living area: Yes

Heated: Yes  
Finished: Yes  
Enclosed: Yes  
Contiguous: Yes  
Permitted: Yes  
Wet space: No  
Addition: No  
Conversion: No

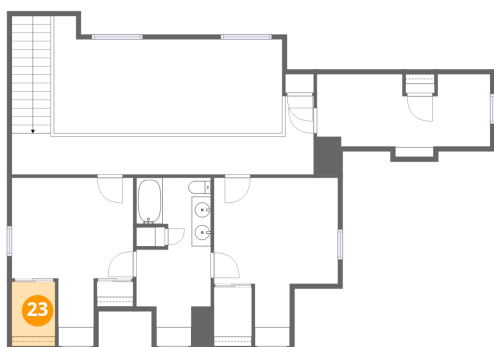
## 22 Floor 2 - Bedroom



Dimensions: 12'11" x 17'7"  
Area: 166 sq. ft  
Counted as living area: Yes

Heated: Yes  
Finished: Yes  
Enclosed: Yes  
Contiguous: Yes  
Permitted: Yes  
Wet space: No  
Addition: No  
Conversion: No

## 23 Floor 2 - Cl

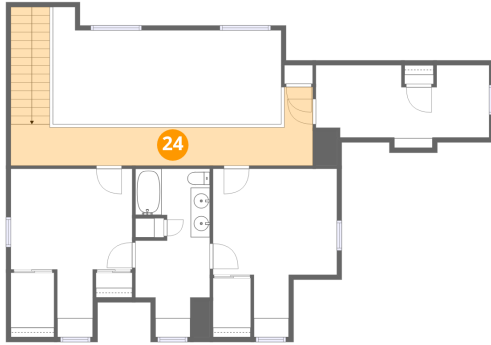


Dimensions: 4'6" x 6'9"  
Area: 30 sq. ft  
Counted as living area: Yes

Heated: Yes  
Finished: Yes  
Enclosed: Yes  
Contiguous: Yes  
Permitted: Yes  
Wet space: No  
Addition: No  
Conversion: No

187 Meadow Brook Lane, Pickens, Pickens County, South Carolina, United States, 29671

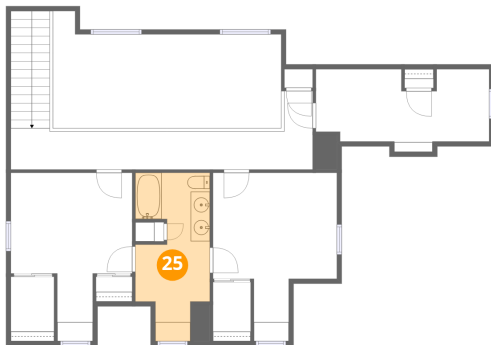
**24** Floor 2 - Hall



Dimensions: 31'6" x 8'2"  
Area: 188 sq. ft  
Counted as living area: Yes

Heated: Yes  
Finished: Yes  
Enclosed: Yes  
Contiguous: Yes  
Permitted: Yes  
Wet space: No  
Addition: No  
Conversion: No

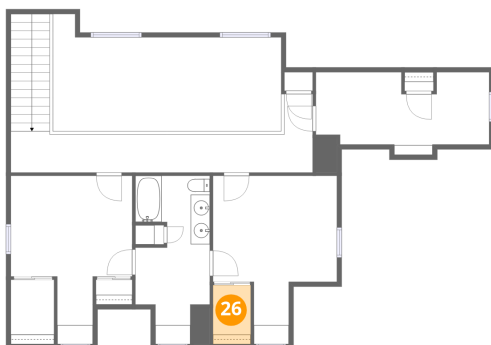
**25** Floor 2 - Bath



Dimensions: 7'8" x 17'7"  
Area: 110 sq. ft  
Counted as living area: Yes

Heated: Yes  
Finished: Yes  
Enclosed: Yes  
Contiguous: Yes  
Permitted: Yes  
Wet space: Yes  
Addition: No  
Conversion: No

**26** Floor 2 - Cl



Dimensions: 3'11" x 6'2"  
Area: 24 sq. ft  
Counted as living area: Yes

Heated: Yes  
Finished: Yes  
Enclosed: Yes  
Contiguous: Yes  
Permitted: Yes  
Wet space: No  
Addition: No  
Conversion: No

# 187 Meadow Brook Lane, Pickens, Pickens County, South Carolina, United States, 29671

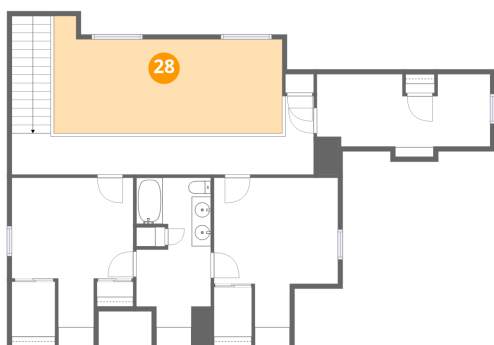
## 27 Floor 2 - Bedroom



Dimensions: 12'8" x 17'7"  
Area: 159 sq. ft  
Counted as living area: Yes

Heated: Yes  
Finished: Yes  
Enclosed: Yes  
Contiguous: Yes  
Permitted: Yes  
Wet space: No  
Addition: No  
Conversion: No

## 28 Floor 2 - Open To Below



Dimensions: 23'10" x 12'3"  
Area: 239 sq. ft  
Counted as living area: No

Heated: No  
Finished: No  
Enclosed: No  
Contiguous: Yes  
Permitted: No  
Wet space: No  
Addition: No  
Conversion: No