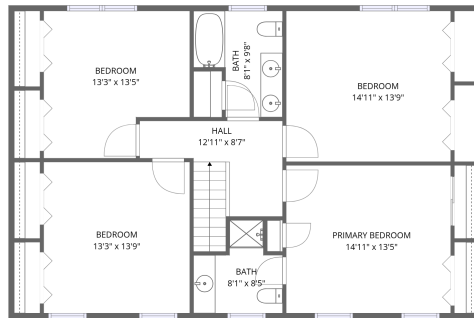
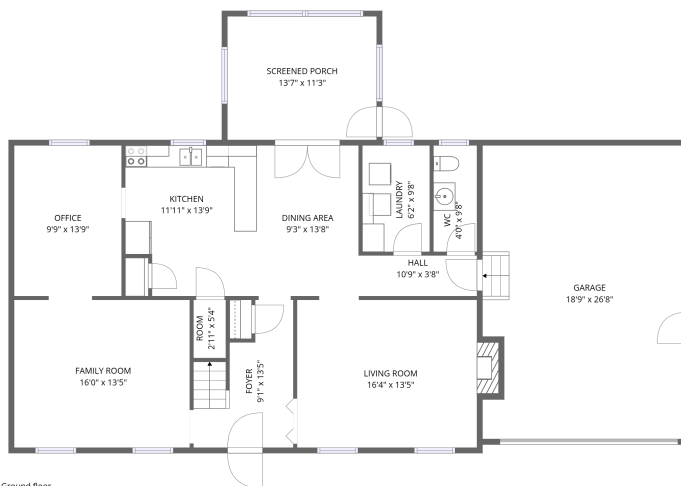


Home report

4411 Override Drive, Chester, Chesterfield County, Virginia,
United States, 23831



1st floor



Ground floor

Total Area: 2316 sq. ft

Ground Floor: 1159 sq. ft, 1st Floor: 1157 sq. ft

Excluded: Garage 489 sq. ft, Screened porch 153 sq. ft, Fireplace 11 sq. ft, Walls: 188 sq. ft

Property summary



Home report

**4411 Override Drive, Chester, Chesterfield County, Virginia,
United States, 23831**



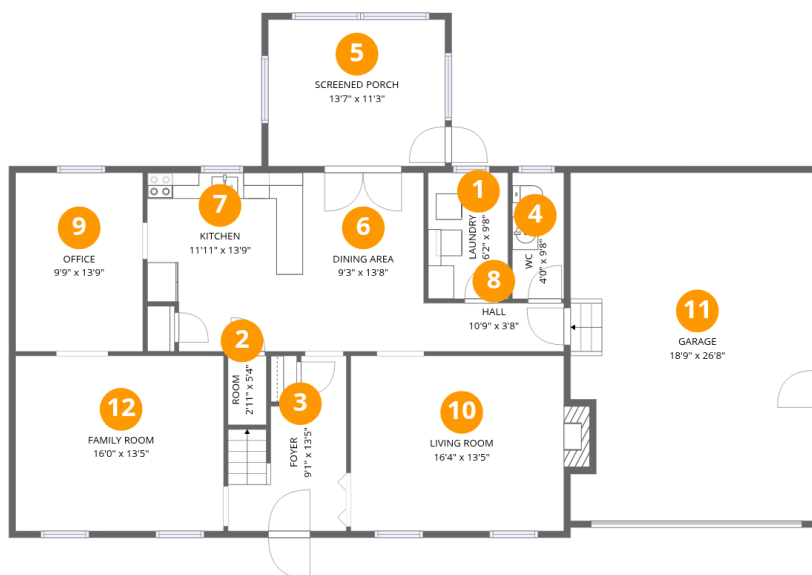
1
Half baths



1
Garages

Home report

4411 Override Drive, Chester, Chesterfield County, Virginia,
United States, 23831



Room dimensions

Floor 1

Total: 1159sqft Excluded: 653sqft

#		Dimensions	sqft	Counted as living area
1	Laundry	6'2" x 9'8"	59 sq. ft	Yes
2	Room	2'11" x 5'4"	16 sq. ft	Yes
3	Foyer	9'1" x 13'5"	122 sq. ft	Yes
4	WC	4'0" x 9'8"	38 sq. ft	Yes
5	Screened Porch	13'7" x 11'3"	153 sq. ft	No
6	Dining Area	9'3" x 13'8"	127 sq. ft	Yes
7	Kitchen	11'11" x 13'9"	164 sq. ft	Yes
8	Hall	10'9" x 3'8"	40 sq. ft	Yes
9	Office	9'9" x 13'9"	134 sq. ft	Yes
10	Living Room	16'4" x 13'5"	220 sq. ft	Yes
11	Garage	18'9" x 26'8"	500 sq. ft	No

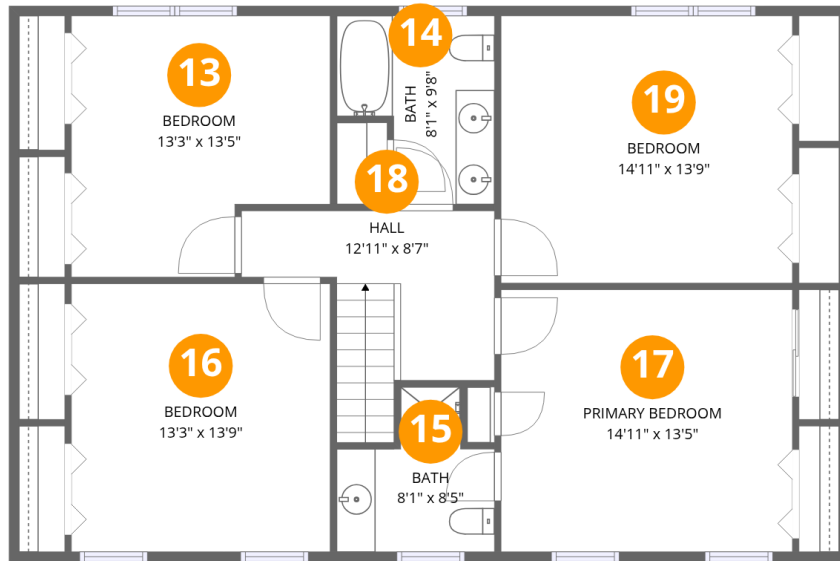
Home report

**4411 Override Drive, Chester, Chesterfield County, Virginia,
United States, 23831**

#		Dimensions	sqft	Counted as living area
12	Family Room	16'0" x 13'5"	215 sq. ft	Yes

Home report

4411 Override Drive, Chester, Chesterfield County, Virginia,
United States, 23831



Room dimensions

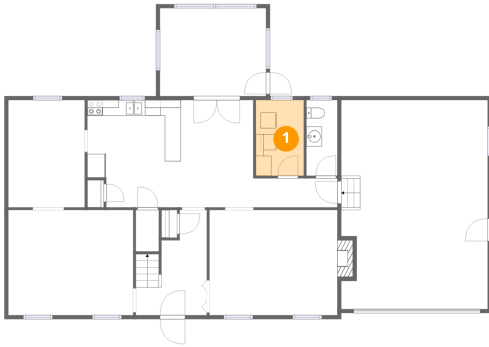
Floor 2

Total:1157sqft Excluded: 0sqft

#		Dimensions	sqft	Counted as living area
13	Bedroom	13'3" x 13'5"	178 sq. ft	Yes
14	Bath	8'1" x 9'8"	78 sq. ft	Yes
15	Bath	8'1" x 8'5"	68 sq. ft	Yes
16	Bedroom	13'3" x 13'9"	182 sq. ft	Yes
17	Primary Bedroom	14'11" x 13'5"	201 sq. ft	Yes
18	Hall	12'11" x 8'7"	111 sq. ft	Yes
19	Bedroom	14'11" x 13'9"	205 sq. ft	Yes

4411 Override Drive, Chester, Chesterfield County, Virginia,
United States, 23831

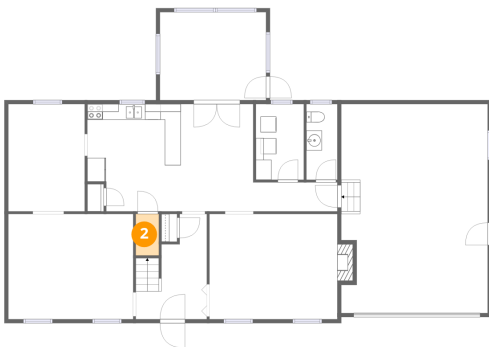
1 Floor 1 - Laundry



Dimensions: 6'2" x 9'8"
Area: 59 sq. ft
Counted as living area: Yes

Heated: Yes
Finished: Yes
Enclosed: Yes
Contiguous: Yes
Permitted: Yes
Wet space: No
Addition: No
Conversion: No

2 Floor 1 - Room

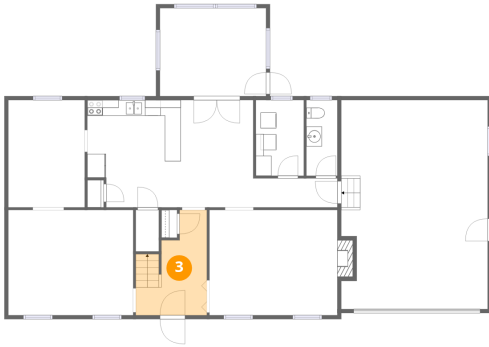


Dimensions: 2'11" x 5'4"
Area: 16 sq. ft
Counted as living area: Yes

Heated: Yes
Finished: Yes
Enclosed: Yes
Contiguous: Yes
Permitted: Yes
Wet space: No
Addition: No
Conversion: No

4411 Override Drive, Chester, Chesterfield County, Virginia,
United States, 23831

3 Floor 1 - Foyer



Dimensions: 9'1" x 13'5"
Area: 122 sq. ft
Counted as living area: Yes

Heated: Yes
Finished: Yes
Enclosed: Yes
Contiguous: Yes
Permitted: Yes
Wet space: No
Addition: No
Conversion: No

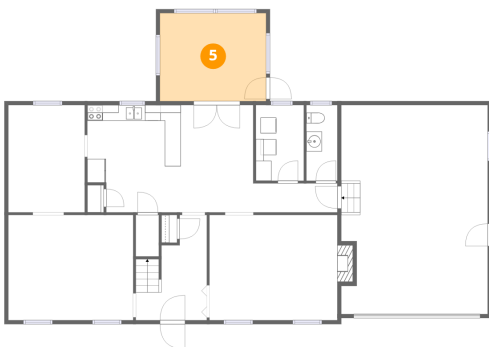
4 Floor 1 - WC



Dimensions: 4'0" x 9'8"
Area: 38 sq. ft
Counted as living area: Yes

Heated: Yes
Finished: Yes
Enclosed: Yes
Contiguous: Yes
Permitted: Yes
Wet space: Yes
Addition: No
Conversion: No

5 Floor 1 - Screened Porch

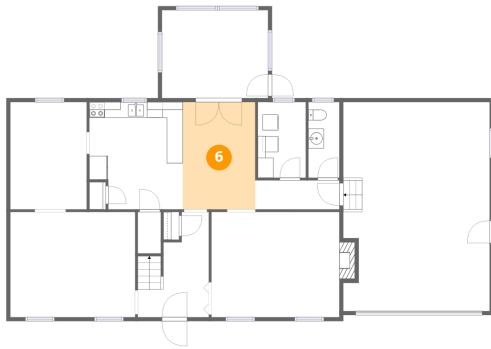


Dimensions: 13'7" x 11'3"
Area: 153 sq. ft
Counted as living area: No

Heated: No
Finished: No
Enclosed: No
Contiguous: Yes
Permitted: Yes
Wet space: No
Addition: No
Conversion: No

4411 Override Drive, Chester, Chesterfield County, Virginia,
United States, 23831

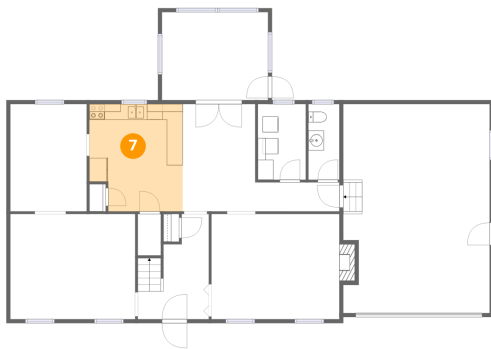
6 Floor 1 - Dining Area



Dimensions: 9'3" x 13'8"
Area: 127 sq. ft
Counted as living area: Yes

Heated: Yes
Finished: Yes
Enclosed: Yes
Contiguous: Yes
Permitted: Yes
Wet space: No
Addition: No
Conversion: No

7 Floor 1 - Kitchen



Dimensions: 11'11" x 13'9"
Area: 164 sq. ft
Counted as living area: Yes

Heated: Yes
Finished: Yes
Enclosed: Yes
Contiguous: Yes
Permitted: Yes
Wet space: No
Addition: No
Conversion: No

8 Floor 1 - Hall



Dimensions: 10'9" x 3'8"
Area: 40 sq. ft
Counted as living area: Yes

Heated: Yes
Finished: Yes
Enclosed: Yes
Contiguous: Yes
Permitted: Yes
Wet space: No
Addition: No
Conversion: No

4411 Override Drive, Chester, Chesterfield County, Virginia,
United States, 23831

9 Floor 1 - Office



Dimensions: 9'9" x 13'9"
Area: 134 sq. ft
Counted as living area: Yes

Heated: Yes
Finished: Yes
Enclosed: Yes
Contiguous: Yes
Permitted: Yes
Wet space: No
Addition: No
Conversion: No

10 Floor 1 - Living Room



Dimensions: 16'4" x 13'5"
Area: 220 sq. ft
Counted as living area: Yes

Heated: Yes
Finished: Yes
Enclosed: Yes
Contiguous: Yes
Permitted: Yes
Wet space: No
Addition: No
Conversion: No

11 Floor 1 - Garage



Dimensions: 18'9" x 26'8"
Area: 500 sq. ft
Counted as living area: No

Heated: No
Finished: No
Enclosed: Yes
Contiguous: Yes
Permitted: Yes
Wet space: No
Addition: No
Conversion: No

4411 Override Drive, Chester, Chesterfield County, Virginia,
United States, 23831

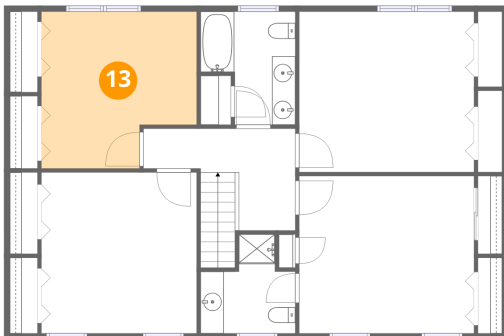
12 Floor 1 - Family Room



Dimensions: 16'0" x 13'5"
Area: 215 sq. ft
Counted as living area: Yes

Heated: Yes
Finished: Yes
Enclosed: Yes
Contiguous: Yes
Permitted: Yes
Wet space: No
Addition: No
Conversion: No

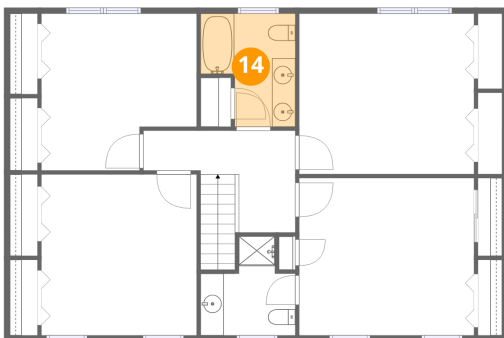
13 Floor 2 - Bedroom



Dimensions: 13'3" x 13'5"
Area: 178 sq. ft
Counted as living area: Yes

Heated: Yes
Finished: Yes
Enclosed: Yes
Contiguous: Yes
Permitted: Yes
Wet space: No
Addition: No
Conversion: No

14 Floor 2 - Bath

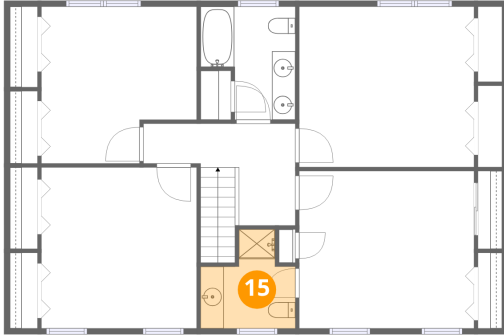


Dimensions: 8'1" x 9'8"
Area: 78 sq. ft
Counted as living area: Yes

Heated: Yes
Finished: Yes
Enclosed: Yes
Contiguous: Yes
Permitted: Yes
Wet space: Yes
Addition: No
Conversion: No

4411 Override Drive, Chester, Chesterfield County, Virginia,
United States, 23831

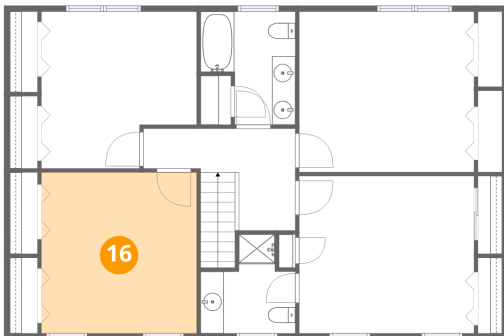
15 Floor 2 - Bath



Dimensions: 8'1" x 8'5"
Area: 68 sq. ft
Counted as living area: Yes

Heated: Yes
Finished: Yes
Enclosed: Yes
Contiguous: Yes
Permitted: Yes
Wet space: Yes
Addition: No
Conversion: No

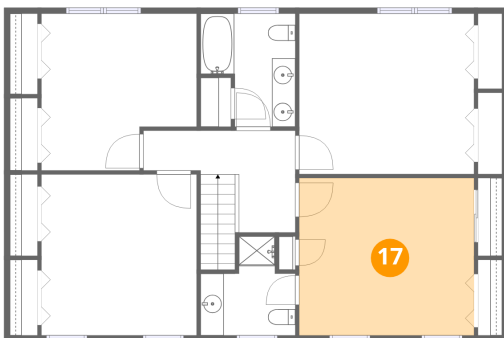
16 Floor 2 - Bedroom



Dimensions: 13'3" x 13'9"
Area: 182 sq. ft
Counted as living area: Yes

Heated: Yes
Finished: Yes
Enclosed: Yes
Contiguous: Yes
Permitted: Yes
Wet space: No
Addition: No
Conversion: No

17 Floor 2 - Primary Bedroom

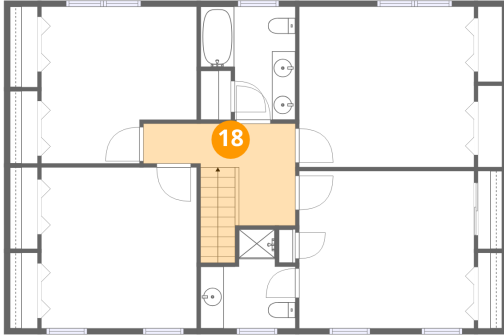


Dimensions: 14'11" x 13'5"
Area: 201 sq. ft
Counted as living area: Yes

Heated: Yes
Finished: Yes
Enclosed: Yes
Contiguous: Yes
Permitted: Yes
Wet space: No
Addition: No
Conversion: No

4411 Override Drive, Chester, Chesterfield County, Virginia,
United States, 23831

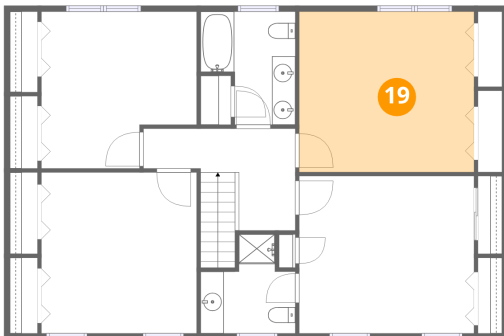
18 Floor 2 - Hall



Dimensions: 12'11" x 8'7"
Area: 111 sq. ft
Counted as living area: Yes

Heated: Yes
Finished: Yes
Enclosed: Yes
Contiguous: Yes
Permitted: Yes
Wet space: No
Addition: No
Conversion: No

19 Floor 2 - Bedroom



Dimensions: 14'11" x 13'9"
Area: 205 sq. ft
Counted as living area: Yes

Heated: Yes
Finished: Yes
Enclosed: Yes
Contiguous: Yes
Permitted: Yes
Wet space: No
Addition: No
Conversion: No