

Home data report

5624 Brights Pike, Russellville, TN, US




Total Area: 1536 sq. ft

1st Floor: 0 sq. ft, 2nd Floor: 1536 sq. ft

Excluded: Garage 2103 sq. ft, Deck 316 sq. ft, Walls: 201 sq. ft

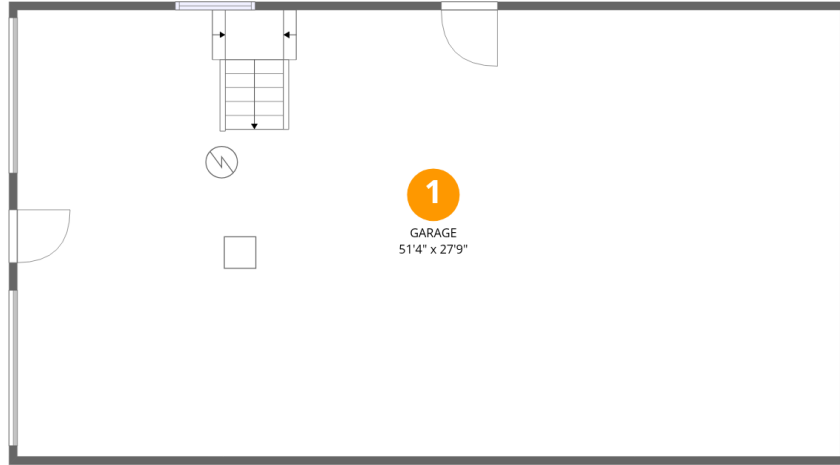
Property summary

 **2** Floors

 **3** Bedrooms

 **2** Bathrooms

 **2** Garages



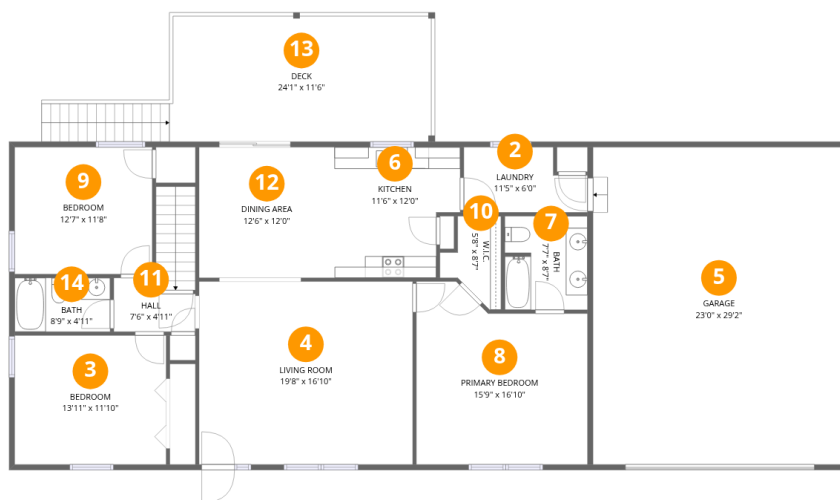
Room dimensions

Floor 1

Total: 0sqft

Excluded: 1432sqft

#		Dimensions	sqft	Counted as living area
1	Garage	51'4" x 27'9"	1432 sq. ft	No



Room dimensions

Floor 2

Total: 1536sqft Excluded: 987sqft

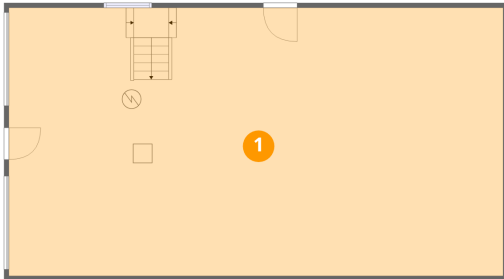
#		Dimensions	sqft	Counted as living area
2	Laundry	11'5" x 6'0"	60 sq. ft	Yes
3	Bedroom	13'11" x 11'10"	165 sq. ft	Yes
4	Living Room	19'8" x 16'10"	330 sq. ft	Yes
5	Garage	23'0" x 29'2"	671 sq. ft	No
6	Kitchen	11'6" x 12'0"	125 sq. ft	Yes
7	Bath	7'7" x 8'7"	65 sq. ft	Yes
8	Primary Bedroom	15'9" x 16'10"	233 sq. ft	Yes
9	Bedroom	12'7" x 11'8"	148 sq. ft	Yes
10	W.I.C.	5'8" x 8'7"	34 sq. ft	Yes
11	Hall	7'6" x 4'11"	31 sq. ft	Yes
12	Dining Area	12'6" x 12'0"	150 sq. ft	Yes

Home data report

5624 Brights Pike, Russellville, TN, US

#		Dimensions	sqft	Counted as living area
13	Deck	24'1" x 11'6"	316 sq. ft	No
14	Bath	8'9" x 4'11"	43 sq. ft	Yes

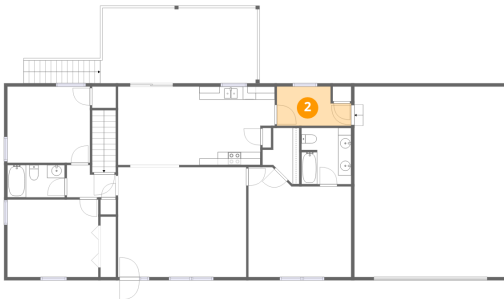
1 Floor 1 - Garage



Dimensions: 51'4" x 27'9"
Area: 1432 sq. ft
Counted as living area: No

Heated: No
Finished: No
Enclosed: Yes
Contiguous: Yes
Permitted: Yes
Wet space: No
Addition: No
Conversion: No

2 Floor 2 - Laundry



Dimensions: 11'5" x 6'0"
Area: 60 sq. ft
Counted as living area: Yes

Heated: Yes
Finished: Yes
Enclosed: Yes
Contiguous: Yes
Permitted: Yes
Wet space: No
Addition: No
Conversion: No

3 Floor 2 - Bedroom



Dimensions: 13'11" x 11'10"
Area: 165 sq. ft
Counted as living area: Yes

Heated: Yes
Finished: Yes
Enclosed: Yes
Contiguous: Yes
Permitted: Yes
Wet space: No
Addition: No
Conversion: No

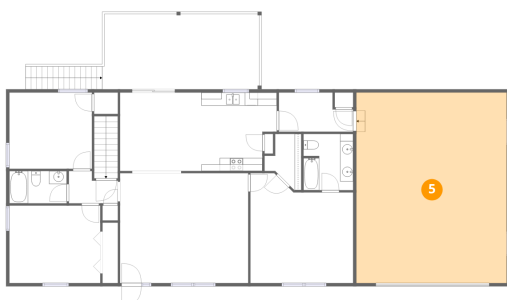
4 Floor 2 - Living Room



Dimensions: 19'8" x 16'10"
Area: 330 sq. ft
Counted as living area: Yes

Heated: Yes
Finished: Yes
Enclosed: Yes
Contiguous: Yes
Permitted: Yes
Wet space: No
Addition: No
Conversion: No

5 Floor 2 - Garage



Dimensions: 23'0" x 29'2"
Area: 671 sq. ft
Counted as living area: No

Heated: No
Finished: No
Enclosed: Yes
Contiguous: Yes
Permitted: Yes
Wet space: No
Addition: No
Conversion: No

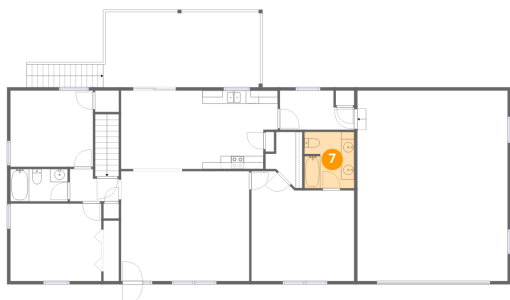
6 Floor 2 - Kitchen



Dimensions: 11'6" x 12'0"
Area: 125 sq. ft
Counted as living area: Yes

Heated: Yes
Finished: Yes
Enclosed: Yes
Contiguous: Yes
Permitted: Yes
Wet space: No
Addition: No
Conversion: No

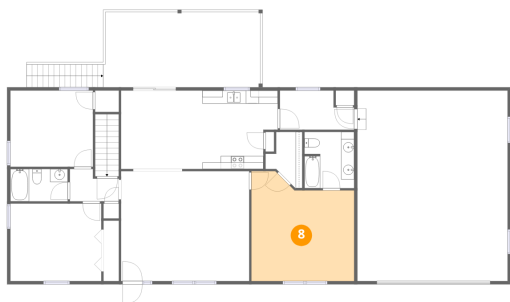
7 Floor 2 - Bath



Dimensions: 7'7" x 8'7"
Area: 65 sq. ft
Counted as living area: Yes

Heated: Yes
Finished: Yes
Enclosed: Yes
Contiguous: Yes
Permitted: Yes
Wet space: Yes
Addition: No
Conversion: No

8 Floor 2 - Primary Bedroom



Dimensions: 15'9" x 16'10"
Area: 233 sq. ft
Counted as living area: Yes

Heated: Yes
Finished: Yes
Enclosed: Yes
Contiguous: Yes
Permitted: Yes
Wet space: No
Addition: No
Conversion: No

9 Floor 2 - Bedroom



Dimensions: 12'7" x 11'8"
Area: 148 sq. ft
Counted as living area: Yes

Heated: Yes
Finished: Yes
Enclosed: Yes
Contiguous: Yes
Permitted: Yes
Wet space: No
Addition: No
Conversion: No

10 Floor 2 - W.I.C.



Dimensions: 5'8" x 8'7"
Area: 34 sq. ft
Counted as living area: Yes

Heated: Yes
Finished: Yes
Enclosed: Yes
Contiguous: Yes
Permitted: Yes
Wet space: No
Addition: No
Conversion: No

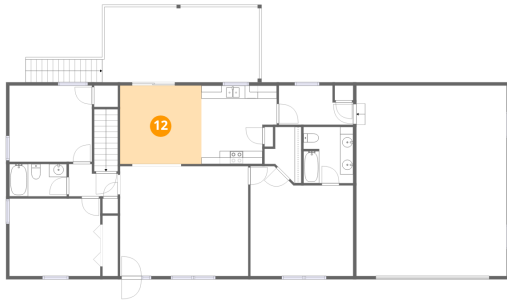
11 Floor 2 - Hall



Dimensions: 7'6" x 4'11"
Area: 31 sq. ft
Counted as living area: Yes

Heated: Yes
Finished: Yes
Enclosed: Yes
Contiguous: Yes
Permitted: Yes
Wet space: No
Addition: No
Conversion: No

12 Floor 2 - Dining Area



Dimensions: 12'6" x 12'0"
Area: 150 sq. ft
Counted as living area: Yes

Heated: Yes
Finished: Yes
Enclosed: Yes
Contiguous: Yes
Permitted: Yes
Wet space: No
Addition: No
Conversion: No

13 Floor 2 - Deck



Dimensions: 24'1" x 11'6"
Area: 316 sq. ft
Counted as living area: No

Heated: No
Finished: No
Enclosed: No
Contiguous: Yes
Permitted: Yes
Wet space: No
Addition: No
Conversion: No

14 Floor 2 - Bath



Dimensions: 8'9" x 4'11"
Area: 43 sq. ft
Counted as living area: Yes

Heated: Yes
Finished: Yes
Enclosed: Yes
Contiguous: Yes
Permitted: Yes
Wet space: Yes
Addition: No
Conversion: No