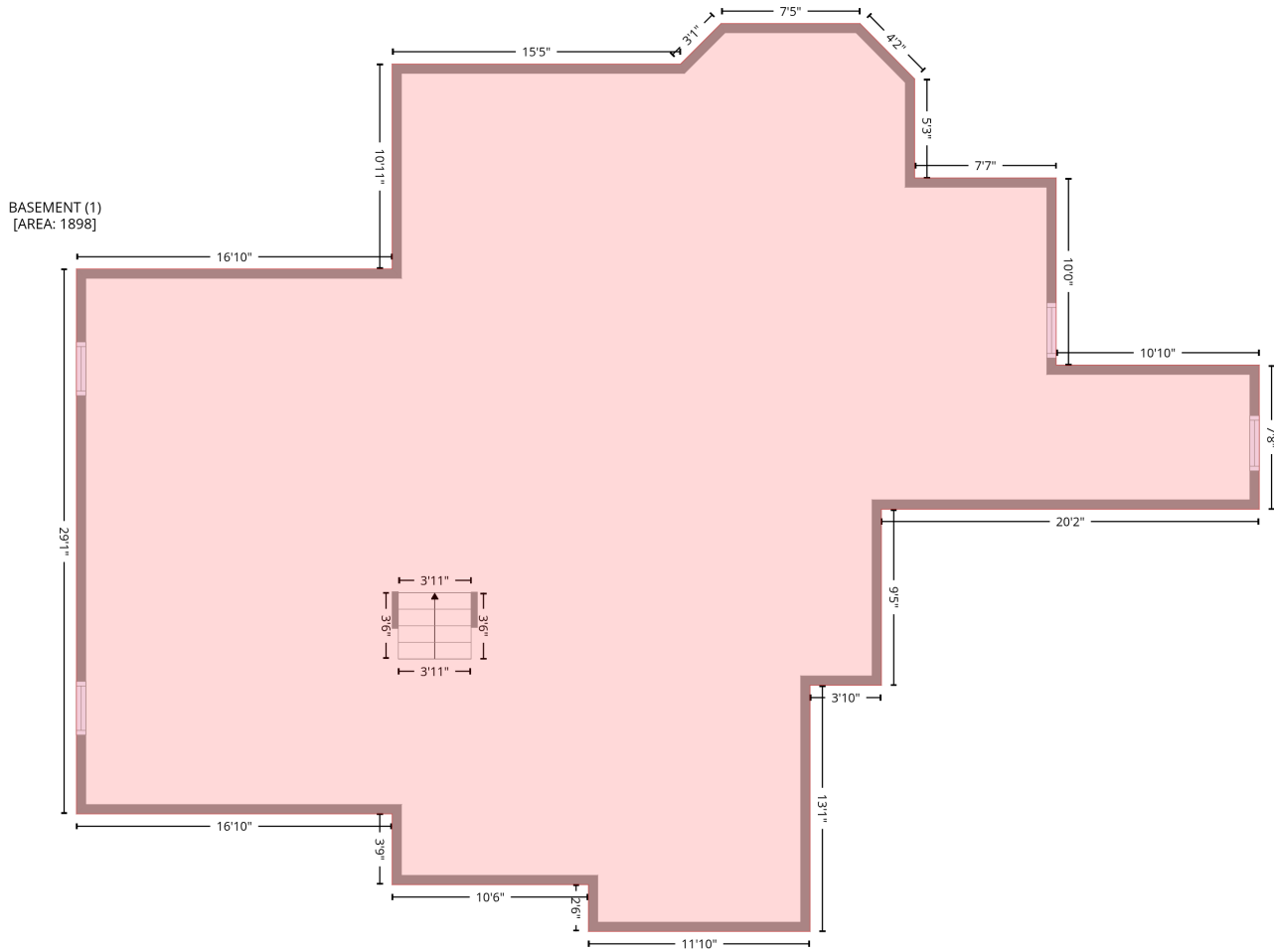


52018 Loon Court, Shelby Township, Michigan 48315, United States

Gross Living Area: 3444 sq. ft

Level 1 - Below Grade



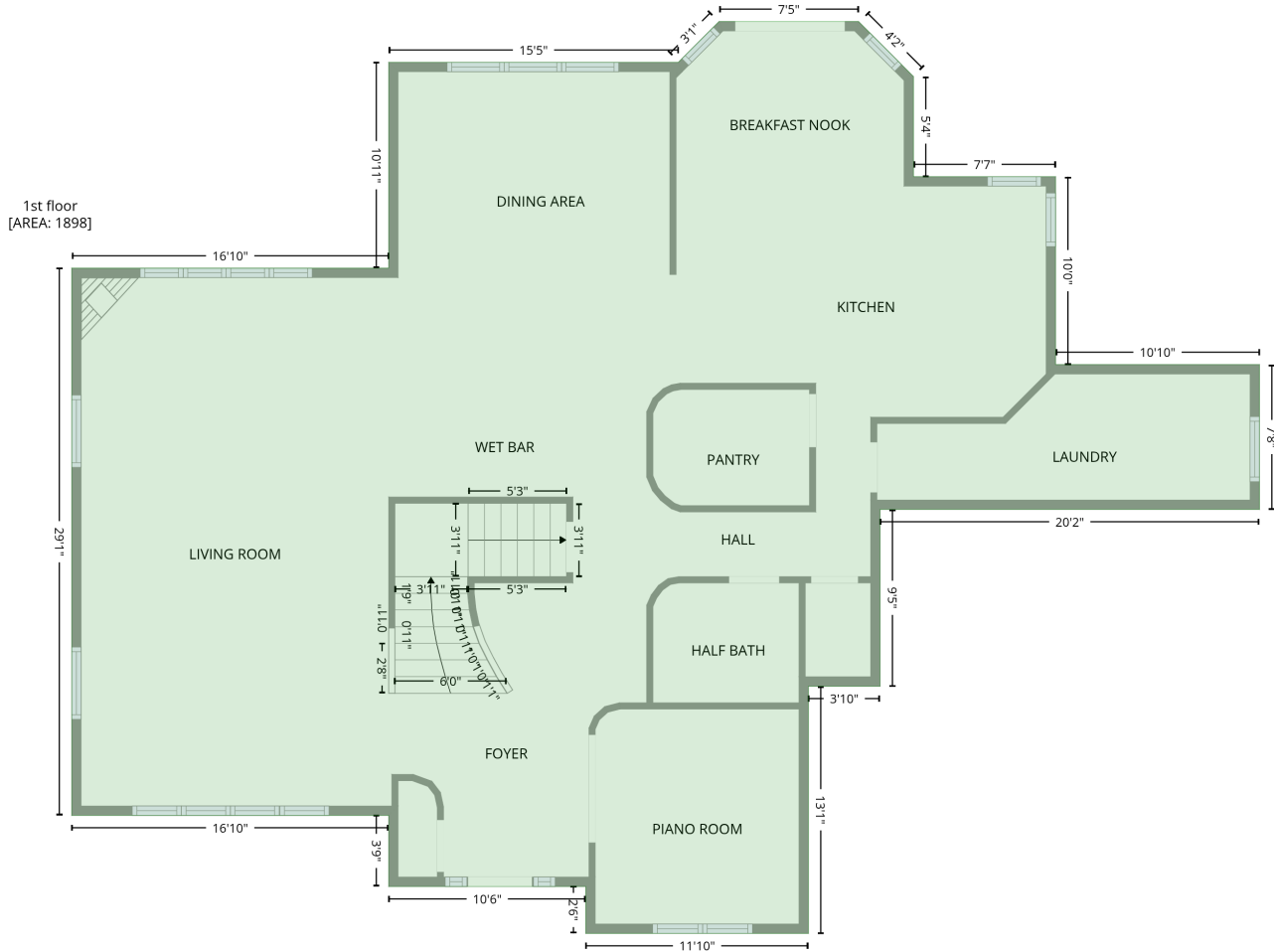
BASEMENT (1)
[AREA: 1898]

| Space | Area (sq. ft) | Calculation |
|-------------------------------|---------------|--|
| BASEMENT (Non-living area) | 1898 | Coordinate Polygon Area Algorithm using inches $-((423.9 + 458.9) * (102.9 - 138.3) + (458.9 + 458.9) * (138.3 - 201.7) + (458.9 + 549.4) * (201.7 - 201.7) + (549.4 + 549.4) * (201.7 - 321.4) + (549.4 + 679.3) * (321.4 - 321.4) + (679.3 + 679.3) * (321.4 - 413.6) + (679.3 + 437.6) * (413.6 - 413.6) + (437.6 + 437.6) * (413.6 - 526.2) + (437.6 + 391.9) * (526.2 - 526.2) + (391.9 + 391.9) * (526.2 - 683.7) + (391.9 + 250.1) * (683.7 - 683.7) + (250.1 + 250.1) * (683.7 - 653.8) + (250.1 + 124.5) * (653.8 - 653.8) + (124.5 + 124.5) * (653.8 - 608.5) + (124.5 + -77.5) * (608.5 - 608.5) + (-77.5 + -77.5) * (608.5 - 260) + (-77.5 + 124.5) * (260 - 260) + (124.5 + 124.5) * (260 - 128.9) + (124.5 + 309) * (128.9 - 128.9) + (309 + 335) * (128.9 - 102.9) + (335 + 423.9) * (102.9 - 102.9)) * 0.5 * 0.00694$ |

52018 Loon Court, Shelby Township, Michigan 48315, United States

Gross Living Area: 3444 sq. ft

Level 2



| Space | Area (sq. ft) | Calculation <small>Coordinate Polygon Area Algorithm using inches</small> |
|----------------------------|---------------|--|
| 1st floor (Living area) | 1898 | $ \begin{aligned} & -((423.8 + 458.9) * (102.9 - 137.9) + (458.9 + 458.9) * (137.9 - 201.7) + (458.9 + 549.4) * (201.7 - \\ & 201.7) + (549.4 + 549.4) * (201.7 - 321.4) + (549.4 + 679.3) * (321.4 - 321.4) + (679.3 + 679.3) * \\ & (321.4 - 413.6) + (679.3 + 437.6) * (413.6 - 413.6) + (437.6 + 437.6) * (413.6 - 526.2) + (437.6 + \\ & 391.9) * (526.2 - 526.2) + (391.9 + 391.9) * (526.2 - 683.7) + (391.9 + 250.1) * (683.7 - 683.7) + \\ & (250.1 + 250.1) * (683.7 - 653.8) + (250.1 + 124.5) * (653.8 - 653.8) + (124.5 + 124.5) * (653.8 - \\ & 608.5) + (124.5 + -77.5) * (608.5 - 608.5) + (-77.5 + -77.5) * (608.5 - 260) + (-77.5 + 124.5) * (260 \\ & - 260) + (124.5 + 124.5) * (260 - 128.9) + (124.5 + 309) * (128.9 - 128.9) + (309 + 335) * (128.9 - \\ & 102.9) + (335 + 423.8) * (102.9 - 102.9)) * 0.5 * 0.00694 \end{aligned} $ |

52018 Loon Court, Shelby Township, Michigan 48315, United States

Gross Living Area: 3444 sq. ft

Level 3

| Space | Area (sq. ft) | Calculation <small>Coordinate Polygon Area Algorithm using inches</small> |
|------------------------------------|---------------|---|
| 2nd floor (Living area) | 1546 | $-\left((423.8 + 458.9) * (102.9 - 137.9) + (458.9 + 458.9) * (137.9 - 201.7) + (458.9 + 549.4) * (201.7 - 201.7) + (549.4 + 549.4) * (201.7 - 321.4) + (549.4 + 679.3) * (321.4 - 321.4) + (679.3 + 679.3) * (321.4 - 586.5) + (679.3 + 541.4) * (586.5 - 586.5) + (541.4 + 541.4) * (586.5 - 550.6) + (541.4 + 391.9) * (550.6 - 550.6) + (391.9 + 391.9) * (550.6 - 683.7) + (391.9 + 250.1) * (683.7 - 683.7) + (250.1 + 250.1) * (683.7 - 653.8) + (250.1 + 252.1) * (653.8 - 647.8) + (252.1 + 252.1) * (647.8 - 460.5) + (252.1 + 179.1) * (460.5 - 460.5) + (179.1 + 179) * (460.5 - 466.9) + (179 + 180.1) * (466.9 - 477) + (180.1 + 182.3) * (477 - 487.3) + (182.3 + 185.9) * (487.3 - 497.4) + (185.9 + 191.1) * (497.4 - 507.6) + (191.1 + 196.8) * (507.6 - 518.1) + (196.8 + 203.5) * (518.1 - 528.6) + (203.5 + 200.1) * (528.6 - 530.8) + (200.1 + 122.5) * (530.8 - 530.8) + (122.5 + 122.5) * (530.8 - 128.9) + (122.5 + 309) * (128.9 - 128.9) + (309 + 335) * (128.9 - 102.9) + (335 + 423.8) * (102.9 - 102.9)\right) * 0.5 * 0.00694$ |
| OPEN TO BELOW (Non-living area) | 142 | $-\left((252.1 + 252.1) * (460.5 - 647.8) + (252.1 + 250.1) * (647.8 - 653.8) + (250.1 + 122.5) * (653.8 - 653.8) + (122.5 + 122.5) * (653.8 - 530.8) + (122.5 + 200.1) * (530.8 - 530.8) + (200.1 + 203.5) * (530.8 - 528.6) + (203.5 + 196.8) * (528.6 - 518.1) + (196.8 + 191.1) * (518.1 - 507.6) + (191.1 + 185.9) * (507.6 - 497.4) + (185.9 + 182.3) * (497.4 - 487.3) + (182.3 + 180.1) * (487.3 - 477) + (180.1 + 179) * (477 - 466.9) + (179 + 179.1) * (466.9 - 460.5) + (179.1 + 252.1) * (460.5 - 460.5)\right) * 0.5 * 0.00694$ |