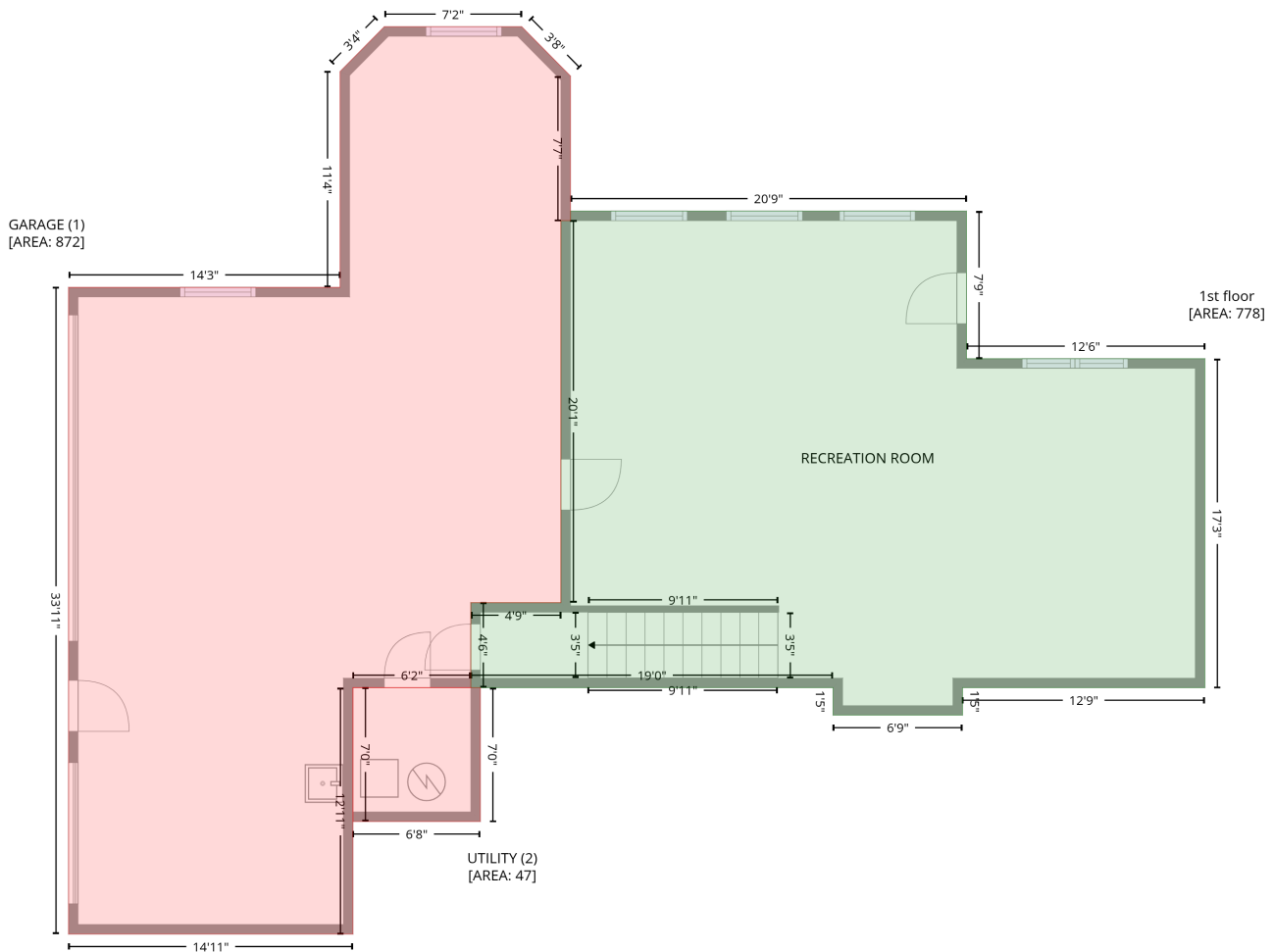


1307 Golf Course Road, Old Fort, McDowell County, North Carolina, United States, 28762

Gross Living Area: 3213 sq. ft

Level 1

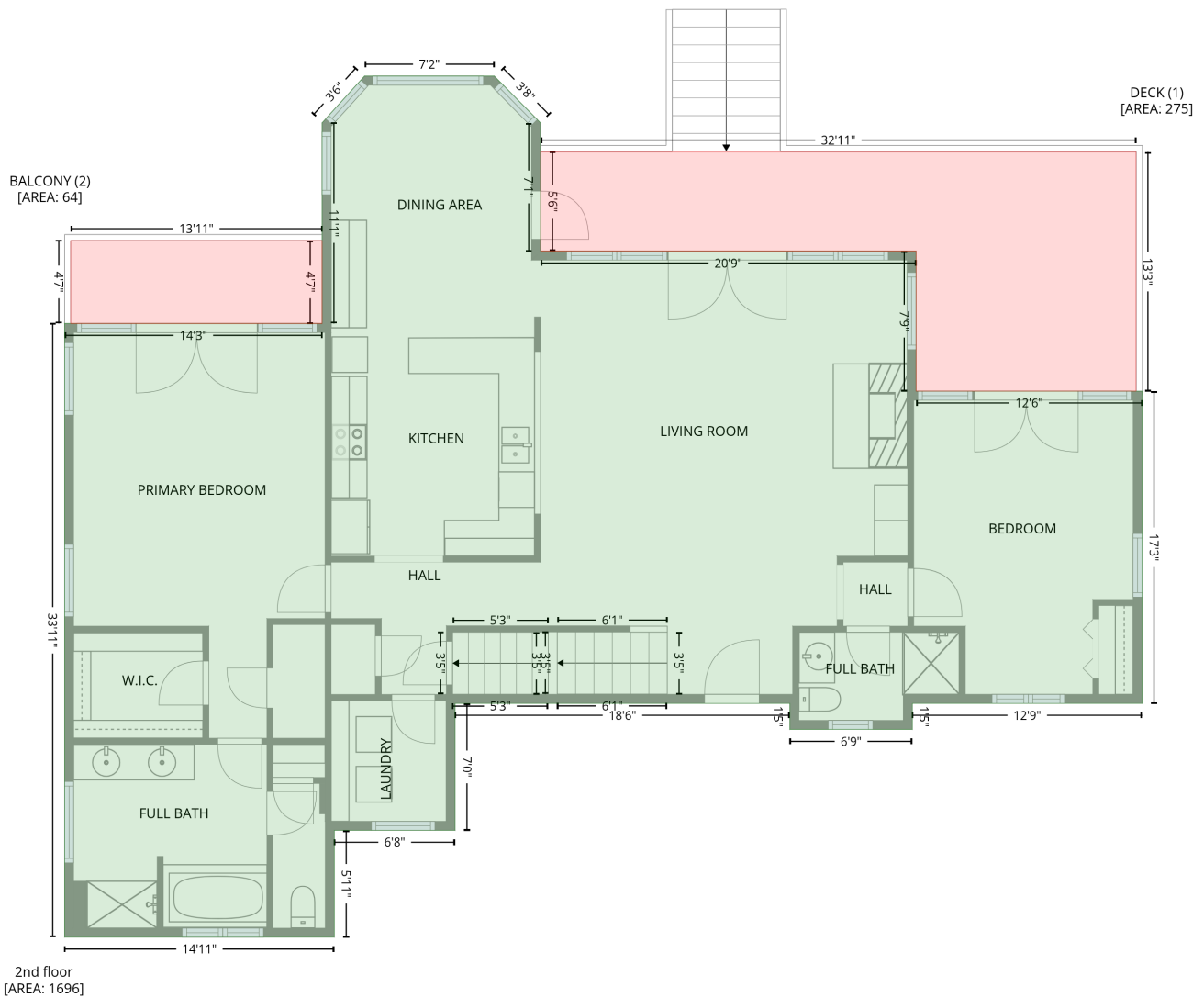


Space	Area (sq. ft)	Calculation
1st floor (Living area)	778	Coordinate Polygon Area Algorithm using inches $-((509.2 + 509.2) * (318.1 - 411) + (509.2 + 659.2) * (411 - 411) + (659.2 + 659.2) * (411 - 618.2) + (659.2 + 506.7) * (618.2 - 618.2) + (506.7 + 506.7) * (618.2 - 635.5) + (506.7 + 425.2) * (635.5 - 635.5) + (425.2 + 425.2) * (635.5 - 618.2) + (425.2 + 197.3) * (618.2 - 618.2) + (197.3 + 197.3) * (618.2 - 564.7) + (197.3 + 253.9) * (564.7 - 564.7) + (253.9 + 253.9) * (564.7 - 324.1) + (253.9 + 259.9) * (324.1 - 324.1) + (259.9 + 259.9) * (324.1 - 318.1) + (259.9 + 509.2) * (318.1 - 318.1)) * 0.5 * 0.00694$
GARAGE (Non-living area)	872	$-((229.2 + 259.9) * (202 - 233.1) + (259.9 + 259.9) * (233.1 - 324.1) + (259.9 + 253.9) * (324.1 - 324.1) + (253.9 + 253.9) * (324.1 - 564.7) + (253.9 + 197.3) * (564.7 - 564.7) + (197.3 + 197.3) * (564.7 - 618.2) + (197.3 + 123.1) * (618.2 - 618.2) + (123.1 + 123.1) * (618.2 - 773.3) + (123.1 + -55.9) * (773.3 - 773.3) + (-55.9 + -55.9) * (773.3 - 366.2) + (-55.9 + 115) * (366.2 - 366.2) + (115 + 115) * (366.2 - 230.2) + (115 + 142.9) * (230.2 - 202) + (142.9 + 229.2) * (202 - 202)) * 0.5 * 0.00694$
UTILITY (Non-living area)	47	$-((203.3 + 203.3) * (618.2 - 702.5) + (203.3 + 123.1) * (702.5 - 702.5) + (123.1 + 123.1) * (702.5 - 618.2) + (123.1 + 203.3) * (618.2 - 618.2)) * 0.5 * 0.00694$

1307 Golf Course Road, Old Fort, McDowell County, North Carolina, United States, 28762

Gross Living Area: 3213 sq. ft

Level 2



Space	Area (sq. ft)	Calculation <small>Coordinate Polygon Area Algorithm using inches</small>
2nd floor (Living area)	1696	$-\left((229.2 + 259.9) * (202 - 233.1) + (259.9 + 259.9) * (233.1 - 318.1) + (259.9 + 509.2) * (318.1 - 318.1) + (509.2 + 509.2) * (318.1 - 411) + (509.2 + 659.2) * (411 - 411) + (659.2 + 659.2) * (411 - 618.2) + (659.2 + 506.7) * (618.2 - 618.2) + (506.7 + 506.7) * (618.2 - 635.5) + (506.7 + 425.4) * (635.5 - 635.5) + (425.4 + 425.4) * (635.5 - 618.2) + (425.4 + 203.3) * (618.2 - 618.2) + (203.3 + 203.3) * (618.2 - 702.5) + (203.3 + 123.1) * (702.5 - 702.5) + (123.1 + 123.1) * (702.5 - 773.3) + (123.1 + -55.9) * (773.3 - 773.3) + (-55.9 + -55.9) * (773.3 - 366.2) + (-55.9 + 115) * (366.2 - 366.2) + (115 + 115) * (366.2 - 233) + (115 + 143.2) * (233 - 202) + (143.2 + 229.2) * (202 - 202)\right) * 0.5 * 0.00694$
DECK (Non-living area)	275	$-\left((655.1 + 655.1) * (252.4 - 411) + (655.1 + 509.2) * (411 - 411) + (509.2 + 509.2) * (411 - 318.1) + (509.2 + 260) * (318.1 - 318.1) + (260 + 260) * (318.1 - 252.4) + (260 + 655.1) * (252.4 - 252.4)\right) * 0.5 * 0.00694$

1307 Golf Course Road, Old Fort, McDowell County, North Carolina, United States, 28762

Gross Living Area: 3213 sq. ft

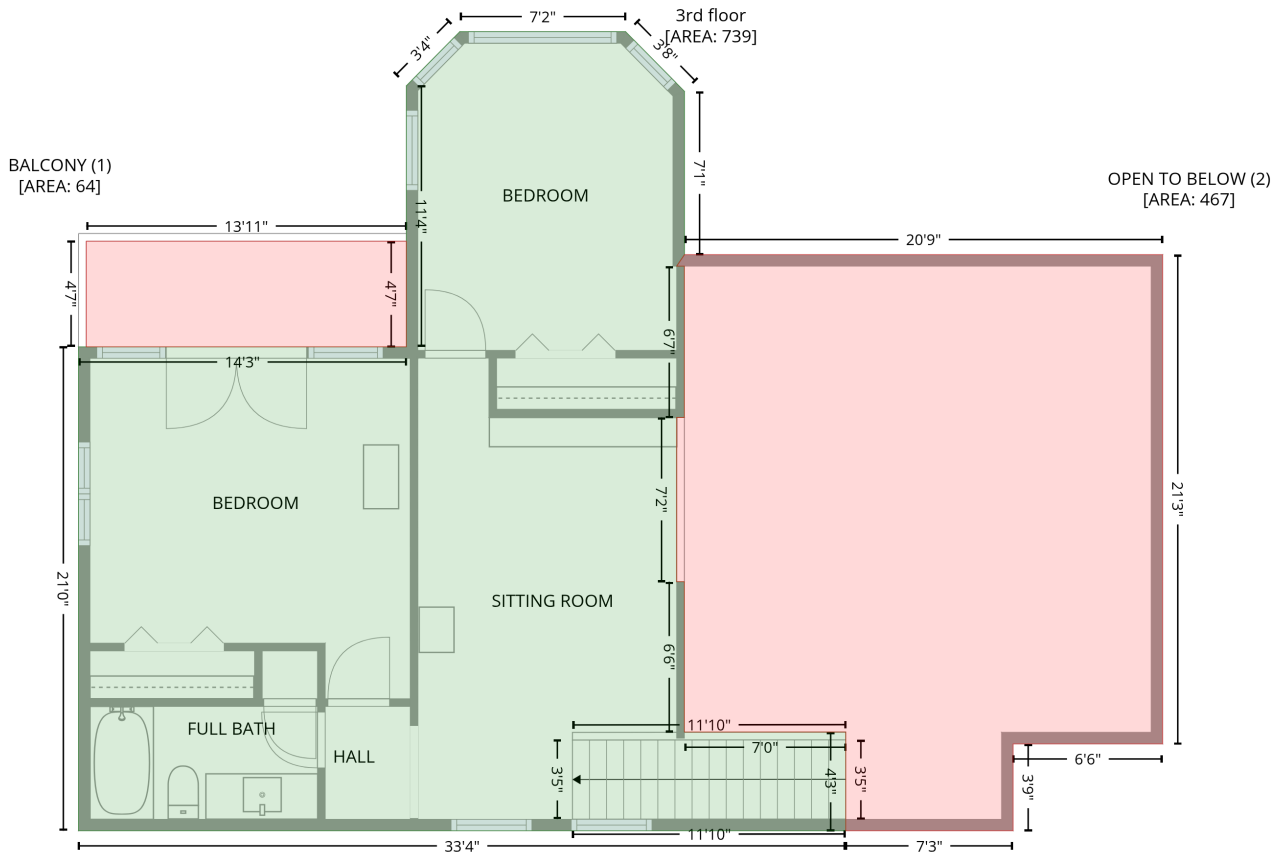
Level 2

Space	Area (sq. ft)	Calculation <small>Coordinate Polygon Area Algorithm using inches</small>
BALCONY (Non-living area)	64	$-((115 + 115) * (311.1 - 366.2) + (115 + -51.9) * (366.2 - 366.2) + (-51.9 + -51.9) * (366.2 - 311.1) + (-51.9 + 115) * (311.1 - 311.1)) * 0.5 * 0.00694$

1307 Golf Course Road, Old Fort, McDowell County, North Carolina, United States, 28762

Gross Living Area: 3213 sq. ft

Level 3



Space	Area (sq. ft)	Calculation <small>Coordinate Polygon Area Algorithm using inches</small>
3rd floor (Living area)	739	$-\left((229.2 + 259.9) * (202 - 233.1) + (259.9 + 259.9) * (233.1 - 318.1) + (259.9 + 255.9) * (318.1 - 324.1) + (255.9 + 259.9) * (324.1 - 324.1) + (259.9 + 259.9) * (324.1 - 402.9) + (259.9 + 255.9) * (402.9 - 402.9) + (255.9 + 255.9) * (402.9 - 488.5) + (255.9 + 259.9) * (488.5 - 488.5) + (259.9 + 259.9) * (488.5 - 566.8) + (259.9 + 344) * (566.8 - 566.8) + (344 + 344) * (566.8 - 618.2) + (344 - 55.9) * (618.2 - 618.2) + (-55.9 + -55.9) * (618.2 - 366.2) + (-55.9 + 115) * (366.2 - 366.2) + (115 + 115) * (366.2 - 230.2) + (115 + 142.9) * (230.2 - 202) + (142.9 + 229.2) * (202 - 202)\right) * 0.5 * 0.00694$
BALCONY (Non-living area)	64	$-\left((115 + 115) * (311.1 - 366.2) + (115 + -51.9) * (366.2 - 366.2) + (-51.9 + -51.9) * (366.2 - 311.1) + (-51.9 + 115) * (311.1 - 311.1)\right) * 0.5 * 0.00694$
OPEN TO BELOW (Non-living area)	467	$-\left((509.2 + 509.2) * (318.1 - 572.9) + (509.2 + 431.2) * (572.9 - 572.9) + (431.2 + 431.2) * (572.9 - 618.2) + (431.2 + 344) * (618.2 - 618.2) + (344 + 344) * (618.2 - 566.8) + (344 + 259.9) * (566.8 - 566.8) + (259.9 + 259.9) * (566.8 - 488.5) + (259.9 + 255.9) * (488.5 - 488.5) + (255.9 + 255.9) * (488.5 - 402.9) + (255.9 + 259.9) * (402.9 - 402.9) + (259.9 + 259.9) * (402.9 - 324.1) + (259.9 + 255.9) * (324.1 - 324.1) + (255.9 + 259.9) * (324.1 - 318.1) + (259.9 + 509.2) * (318.1 - 318.1)\right) * 0.5 * 0.00694$