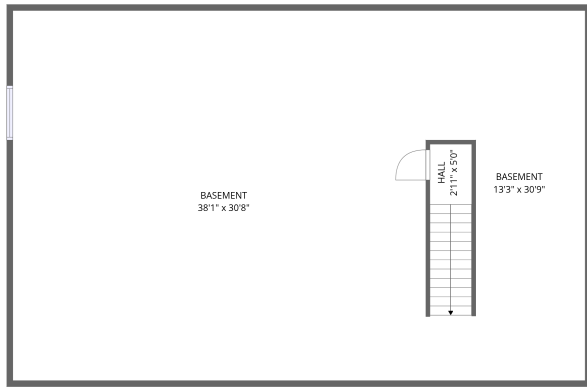


Home data report

1145 Bell Mountain Dr, Farmington, MO, US



Total Area: 1599 sq. ft

Basement: 60 sq. ft, 1st Floor: 1539 sq. ft

Excluded: Basement 1399 sq. ft, Garage 565 sq. ft, Walls: 196 sq. ft

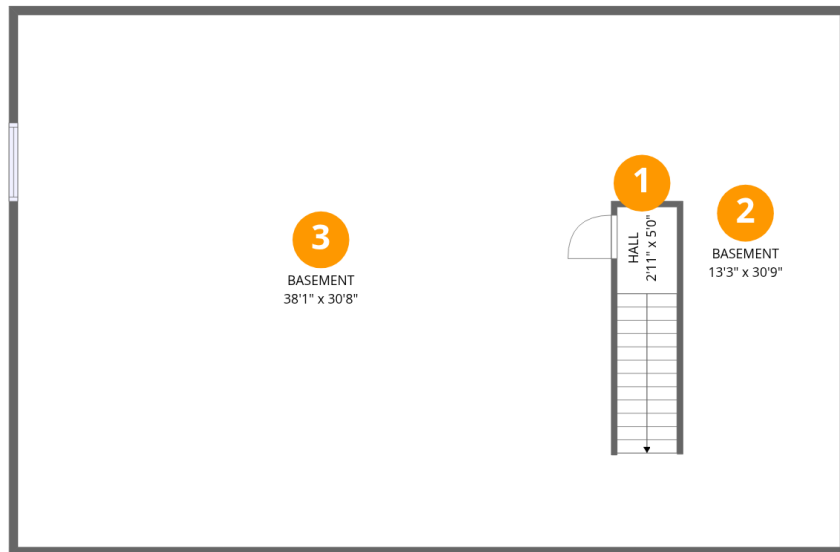
Property summary

 **2** Floors

 **3** Bedrooms

 **2** Bathrooms

 **1** Garages



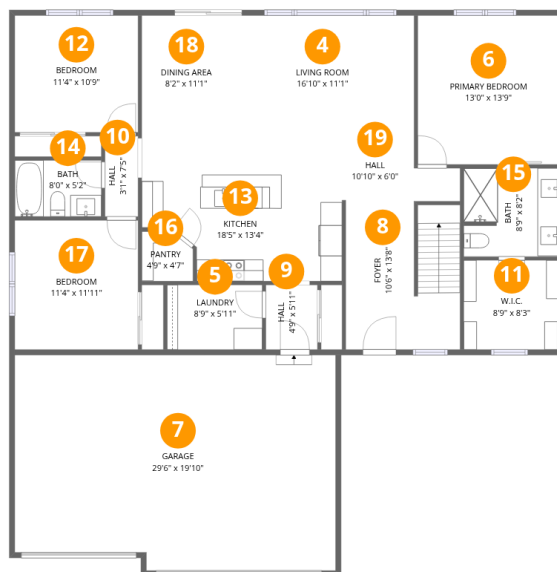
Room dimensions

Floor 1 Below grade

Total: 60 sqft

Excluded: 1399 sqft

#		Dimensions	sqft	Counted as living area
1	Hall	2'11" x 5'0"	15 sq. ft	Yes
2	Basement	13'3" x 30'9"	406 sq. ft	No
3	Basement	38'1" x 30'8"	1168 sq. ft	No



Room dimensions

Floor 2

Total: 1539sqft Excluded: 565sqft

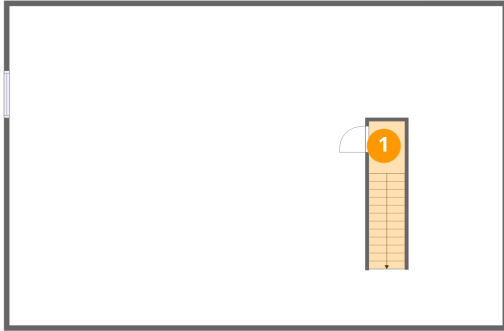
#		Dimensions	sqft	Counted as living area
4	Living Room	16'10" x 11'1"	187 sq. ft	Yes
5	Laundry	8'9" x 5'11"	52 sq. ft	Yes
6	Primary Bedroom	13'0" x 13'9"	178 sq. ft	Yes
7	Garage	29'6" x 19'10"	585 sq. ft	No
8	Foyer	10'6" x 13'8"	143 sq. ft	Yes
9	Hall	4'9" x 5'11"	28 sq. ft	Yes
10	Hall	3'1" x 7'5"	23 sq. ft	Yes
11	W.I.C.	8'9" x 8'3"	72 sq. ft	Yes
12	Bedroom	11'4" x 10'9"	122 sq. ft	Yes
13	Kitchen	18'5" x 13'4"	246 sq. ft	Yes
14	Bath	8'0" x 5'2"	41 sq. ft	Yes

Home data report

1145 Bell Mountain Dr, Farmington, MO, US

#		Dimensions	sqft	Counted as living area
15	Bath	8'9" x 8'2"	71 sq. ft	Yes
16	Pantry	4'9" x 4'7"	22 sq. ft	Yes
17	Bedroom	11'4" x 11'11"	135 sq. ft	Yes
18	Dining Area	8'2" x 11'1"	91 sq. ft	Yes
19	Hall	10'10" x 6'0"	65 sq. ft	Yes

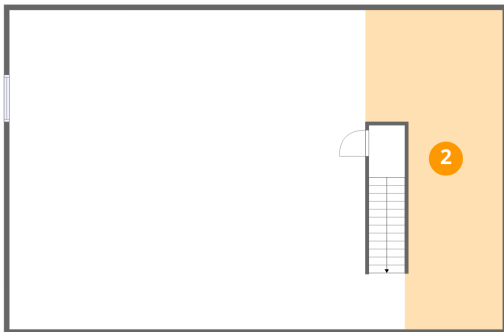
1 Floor 1 - Hall



Dimensions: 2'11" x 5'0"
Area: 15 sq. ft
Counted as living area: No

Heated: Yes
Finished: Yes
Enclosed: Yes
Contiguous: No
Permitted: Yes
Wet space: No
Addition: No
Conversion: No

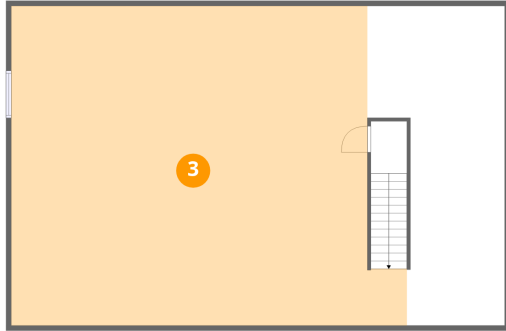
2 Floor 1 - Basement



Dimensions: 13'3" x 30'9"
Area: 406 sq. ft
Counted as living area: No

Heated: Yes
Finished: No
Enclosed: Yes
Contiguous: Yes
Permitted: Yes
Wet space: No
Addition: No
Conversion: No

3 Floor 1 - Basement



Dimensions: 38'1" x 30'8"
Area: 1168 sq. ft
Counted as living area: No

Heated: Yes
Finished: No
Enclosed: Yes
Contiguous: Yes
Permitted: Yes
Wet space: No
Addition: No
Conversion: No

4 Floor 2 - Living Room



Dimensions: 16'10" x 11'1"
Area: 187 sq. ft
Counted as living area: Yes

Heated: Yes
Finished: Yes
Enclosed: Yes
Contiguous: Yes
Permitted: Yes
Wet space: No
Addition: No
Conversion: No

5 Floor 2 - Laundry



Dimensions: 8'9" x 5'11"
Area: 52 sq. ft
Counted as living area: Yes

Heated: Yes
Finished: Yes
Enclosed: Yes
Contiguous: Yes
Permitted: Yes
Wet space: No
Addition: No
Conversion: No

6 Floor 2 - Primary Bedroom



Dimensions: 13'0" x 13'9"
Area: 178 sq. ft
Counted as living area: Yes

Heated: Yes
Finished: Yes
Enclosed: Yes
Contiguous: Yes
Permitted: Yes
Wet space: No
Addition: No
Conversion: No

7 Floor 2 - Garage



Dimensions: 29'6" x 19'10"
Area: 585 sq. ft
Counted as living area: No

Heated: No
Finished: No
Enclosed: Yes
Contiguous: Yes
Permitted: Yes
Wet space: No
Addition: No
Conversion: No

8 Floor 2 - Foyer



Dimensions: 10'6" x 13'8"
Area: 143 sq. ft
Counted as living area: Yes

Heated: Yes
Finished: Yes
Enclosed: Yes
Contiguous: Yes
Permitted: Yes
Wet space: No
Addition: No
Conversion: No

9 Floor 2 - Hall



Dimensions: 4'9" x 5'11"
Area: 28 sq. ft
Counted as living area: Yes

Heated: Yes
Finished: Yes
Enclosed: Yes
Contiguous: Yes
Permitted: Yes
Wet space: No
Addition: No
Conversion: No

10 Floor 2 - Hall



Dimensions: 3'1" x 7'5"
Area: 23 sq. ft
Counted as living area: Yes

Heated: Yes
Finished: Yes
Enclosed: Yes
Contiguous: Yes
Permitted: Yes
Wet space: No
Addition: No
Conversion: No

11 Floor 2 - W.I.C.



Dimensions: 8'9" x 8'3"
Area: 72 sq. ft
Counted as living area: Yes

Heated: Yes
Finished: Yes
Enclosed: Yes
Contiguous: Yes
Permitted: Yes
Wet space: No
Addition: No
Conversion: No

12 Floor 2 - Bedroom



Dimensions: 11'4" x 10'9"
Area: 122 sq. ft
Counted as living area: Yes

Heated: Yes
Finished: Yes
Enclosed: Yes
Contiguous: Yes
Permitted: Yes
Wet space: No
Addition: No
Conversion: No

13 Floor 2 - Kitchen



Dimensions: 18'5" x 13'4"
Area: 246 sq. ft
Counted as living area: Yes

Heated: Yes
Finished: Yes
Enclosed: Yes
Contiguous: Yes
Permitted: Yes
Wet space: No
Addition: No
Conversion: No

14 Floor 2 - Bath



Dimensions: 8'0" x 5'2"
Area: 41 sq. ft
Counted as living area: Yes

Heated: Yes
Finished: Yes
Enclosed: Yes
Contiguous: Yes
Permitted: Yes
Wet space: Yes
Addition: No
Conversion: No

15 Floor 2 - Bath



Dimensions: 8'9" x 8'2"
Area: 71 sq. ft
Counted as living area: Yes

Heated: Yes
Finished: Yes
Enclosed: Yes
Contiguous: Yes
Permitted: Yes
Wet space: Yes
Addition: No
Conversion: No

16 Floor 2 - Pantry



Dimensions: 4'9" x 4'7"
Area: 22 sq. ft
Counted as living area: Yes

Heated: Yes
Finished: Yes
Enclosed: Yes
Contiguous: Yes
Permitted: Yes
Wet space: No
Addition: No
Conversion: No

17 Floor 2 - Bedroom



Dimensions: 11'4" x 11'11"
Area: 135 sq. ft
Counted as living area: Yes

Heated: Yes
Finished: Yes
Enclosed: Yes
Contiguous: Yes
Permitted: Yes
Wet space: No
Addition: No
Conversion: No

18 Floor 2 - Dining Area



Dimensions: 8'2" x 11'1"
Area: 91 sq. ft
Counted as living area: Yes

Heated: Yes
Finished: Yes
Enclosed: Yes
Contiguous: Yes
Permitted: Yes
Wet space: No
Addition: No
Conversion: No

19 Floor 2 - Hall



Dimensions: 10'10" x 6'0"
Area: 65 sq. ft
Counted as living area: Yes

Heated: Yes
Finished: Yes
Enclosed: Yes
Contiguous: Yes
Permitted: Yes
Wet space: No
Addition: No
Conversion: No