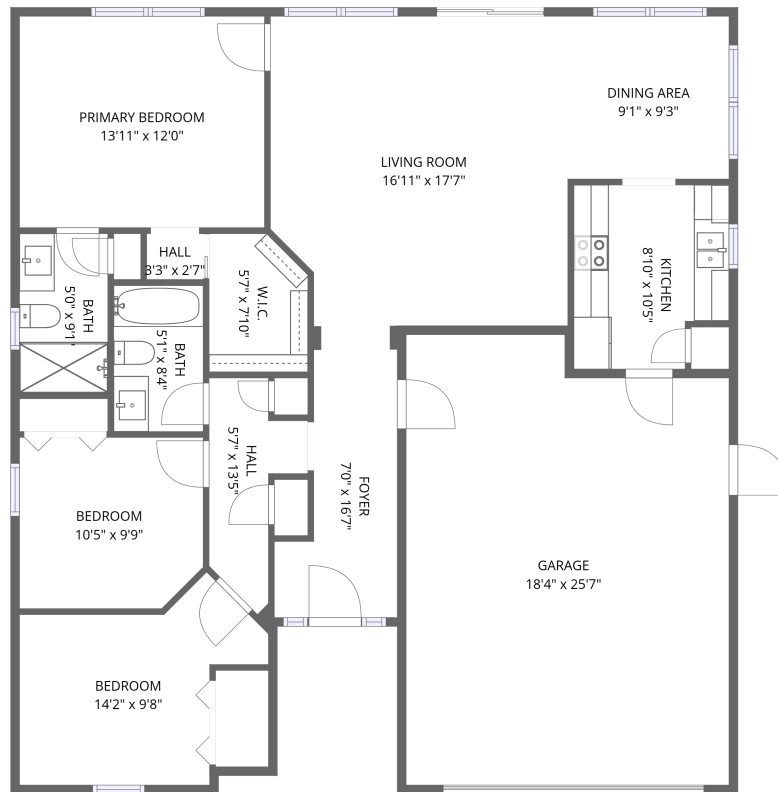


Home data report

# 900 Oak Arbor Cir, St. Augustine, FL, US



1st floor

**Total Area: 1217 sq. ft**

1st Floor: 1217 sq. ft

Excluded: Garage 446 sq. ft, Walls: 112 sq. ft

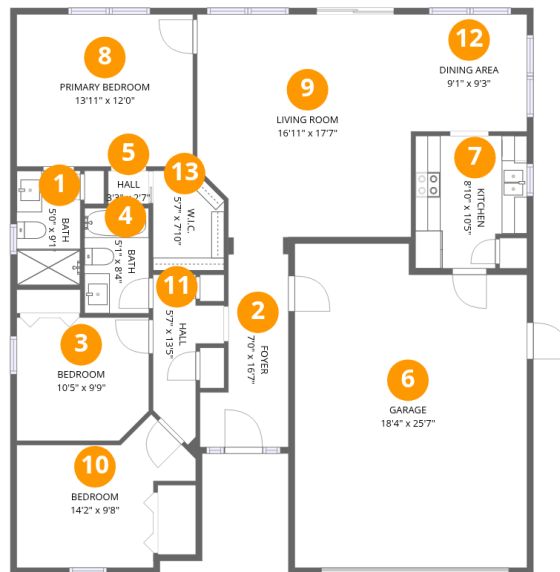
## Property summary

 **1** Floors

 **3** Bedrooms

 **2** Bathrooms

 **1** Garages



## Room dimensions

Floor 1

Total: 1217sqft Excluded: 446sqft

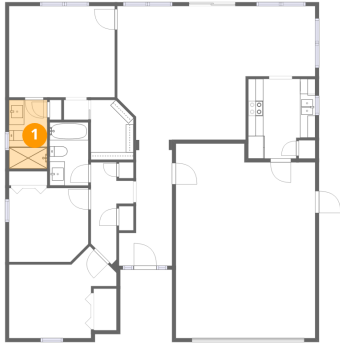
| #  |                 | Dimensions     | sqft       | Counted as living area |
|----|-----------------|----------------|------------|------------------------|
| 1  | Bath            | 5'0" x 9'1"    | 45 sq. ft  | Yes                    |
| 2  | Foyer           | 7'0" x 16'7"   | 116 sq. ft | Yes                    |
| 3  | Bedroom         | 10'5" x 9'9"   | 101 sq. ft | Yes                    |
| 4  | Bath            | 5'1" x 8'4"    | 42 sq. ft  | Yes                    |
| 5  | Hall            | 3'3" x 2'7"    | 8 sq. ft   | Yes                    |
| 6  | Garage          | 18'4" x 25'7"  | 469 sq. ft | No                     |
| 7  | Kitchen         | 8'10" x 10'5"  | 92 sq. ft  | Yes                    |
| 8  | Primary Bedroom | 13'11" x 12'0" | 167 sq. ft | Yes                    |
| 9  | Living Room     | 16'11" x 17'7" | 296 sq. ft | Yes                    |
| 10 | Bedroom         | 14'2" x 9'8"   | 137 sq. ft | Yes                    |
| 11 | Hall            | 5'7" x 13'5"   | 75 sq. ft  | Yes                    |

Home data report

900 Oak Arbor Cir, St. Augustine, FL, US

| #  |             | Dimensions   | sqft      | Counted as living area |
|----|-------------|--------------|-----------|------------------------|
| 12 | Dining Area | 9'1" x 9'3"  | 84 sq. ft | Yes                    |
| 13 | W.I.C.      | 5'7" x 7'10" | 44 sq. ft | Yes                    |

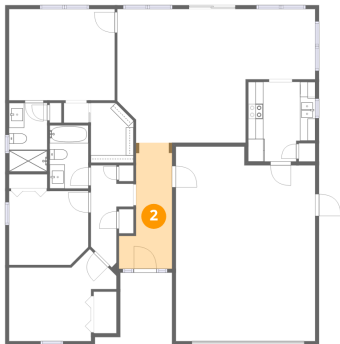
## 1 Floor 1 - Bath



Dimensions: 5'0" x 9'1"  
Area: 45 sq. ft  
Counted as living area: Yes

Heated: Yes  
Finished: Yes  
Enclosed: Yes  
Contiguous: Yes  
Permitted: Yes  
Wet space: Yes  
Addition: No  
Conversion: No

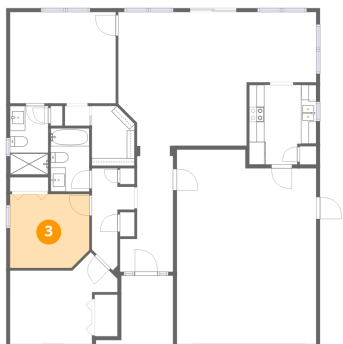
## 2 Floor 1 - Foyer



Dimensions: 7'0" x 16'7"  
Area: 116 sq. ft  
Counted as living area: Yes

Heated: Yes  
Finished: Yes  
Enclosed: Yes  
Contiguous: Yes  
Permitted: Yes  
Wet space: No  
Addition: No  
Conversion: No

### 3 Floor 1 - Bedroom



Dimensions: 10'5" x 9'9"  
Area: 101 sq. ft  
Counted as living area: Yes

Heated: Yes  
Finished: Yes  
Enclosed: Yes  
Contiguous: Yes  
Permitted: Yes  
Wet space: No  
Addition: No  
Conversion: No

### 4 Floor 1 - Bath



Dimensions: 5'1" x 8'4"  
Area: 42 sq. ft  
Counted as living area: Yes

Heated: Yes  
Finished: Yes  
Enclosed: Yes  
Contiguous: Yes  
Permitted: Yes  
Wet space: Yes  
Addition: No  
Conversion: No

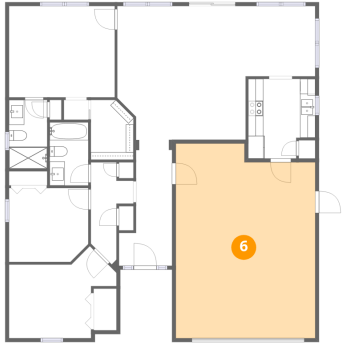
### 5 Floor 1 - Hall



Dimensions: 3'3" x 2'7"  
Area: 8 sq. ft  
Counted as living area: Yes

Heated: Yes  
Finished: Yes  
Enclosed: Yes  
Contiguous: Yes  
Permitted: Yes  
Wet space: No  
Addition: No  
Conversion: No

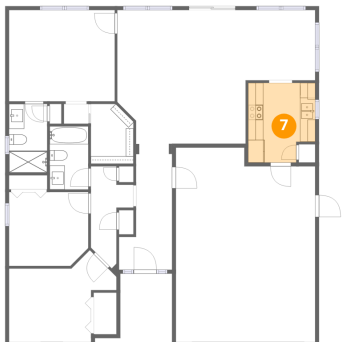
## 6 Floor 1 - Garage



Dimensions: 18'4" x 25'7"  
Area: 469 sq. ft  
Counted as living area: No

Heated: No  
Finished: No  
Enclosed: Yes  
Contiguous: Yes  
Permitted: Yes  
Wet space: No  
Addition: No  
Conversion: No

## 7 Floor 1 - Kitchen



Dimensions: 8'10" x 10'5"  
Area: 92 sq. ft  
Counted as living area: Yes

Heated: Yes  
Finished: Yes  
Enclosed: Yes  
Contiguous: Yes  
Permitted: Yes  
Wet space: No  
Addition: No  
Conversion: No

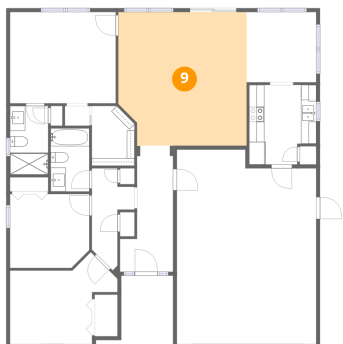
## 8 Floor 1 - Primary Bedroom



Dimensions: 13'11" x 12'0"  
Area: 167 sq. ft  
Counted as living area: Yes

Heated: Yes  
Finished: Yes  
Enclosed: Yes  
Contiguous: Yes  
Permitted: Yes  
Wet space: No  
Addition: No  
Conversion: No

### 9 Floor 1 - Living Room



Dimensions: 16'11" x 17'7"  
Area: 296 sq. ft  
Counted as living area: Yes

Heated: Yes  
Finished: Yes  
Enclosed: Yes  
Contiguous: Yes  
Permitted: Yes  
Wet space: No  
Addition: No  
Conversion: No

### 10 Floor 1 - Bedroom



Dimensions: 14'2" x 9'8"  
Area: 137 sq. ft  
Counted as living area: Yes

Heated: Yes  
Finished: Yes  
Enclosed: Yes  
Contiguous: Yes  
Permitted: Yes  
Wet space: No  
Addition: No  
Conversion: No

### 11 Floor 1 - Hall

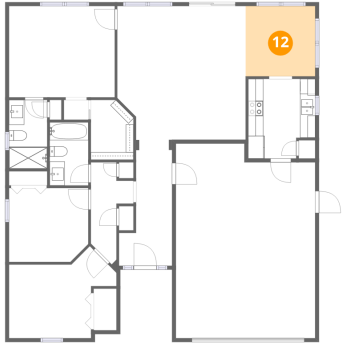


Dimensions: 5'7" x 13'5"  
Area: 75 sq. ft  
Counted as living area: Yes

Heated: Yes  
Finished: Yes  
Enclosed: Yes  
Contiguous: Yes  
Permitted: Yes  
Wet space: No  
Addition: No  
Conversion: No

**12** Floor 1 - Dining Area

---



Dimensions: 9'1" x 9'3"  
Area: 84 sq. ft  
Counted as living area: Yes

Heated: Yes  
Finished: Yes  
Enclosed: Yes  
Contiguous: Yes  
Permitted: Yes  
Wet space: No  
Addition: No  
Conversion: No

**13** Floor 1 - W.I.C.

---



Dimensions: 5'7" x 7'10"  
Area: 44 sq. ft  
Counted as living area: Yes

Heated: Yes  
Finished: Yes  
Enclosed: Yes  
Contiguous: Yes  
Permitted: Yes  
Wet space: No  
Addition: No  
Conversion: No