

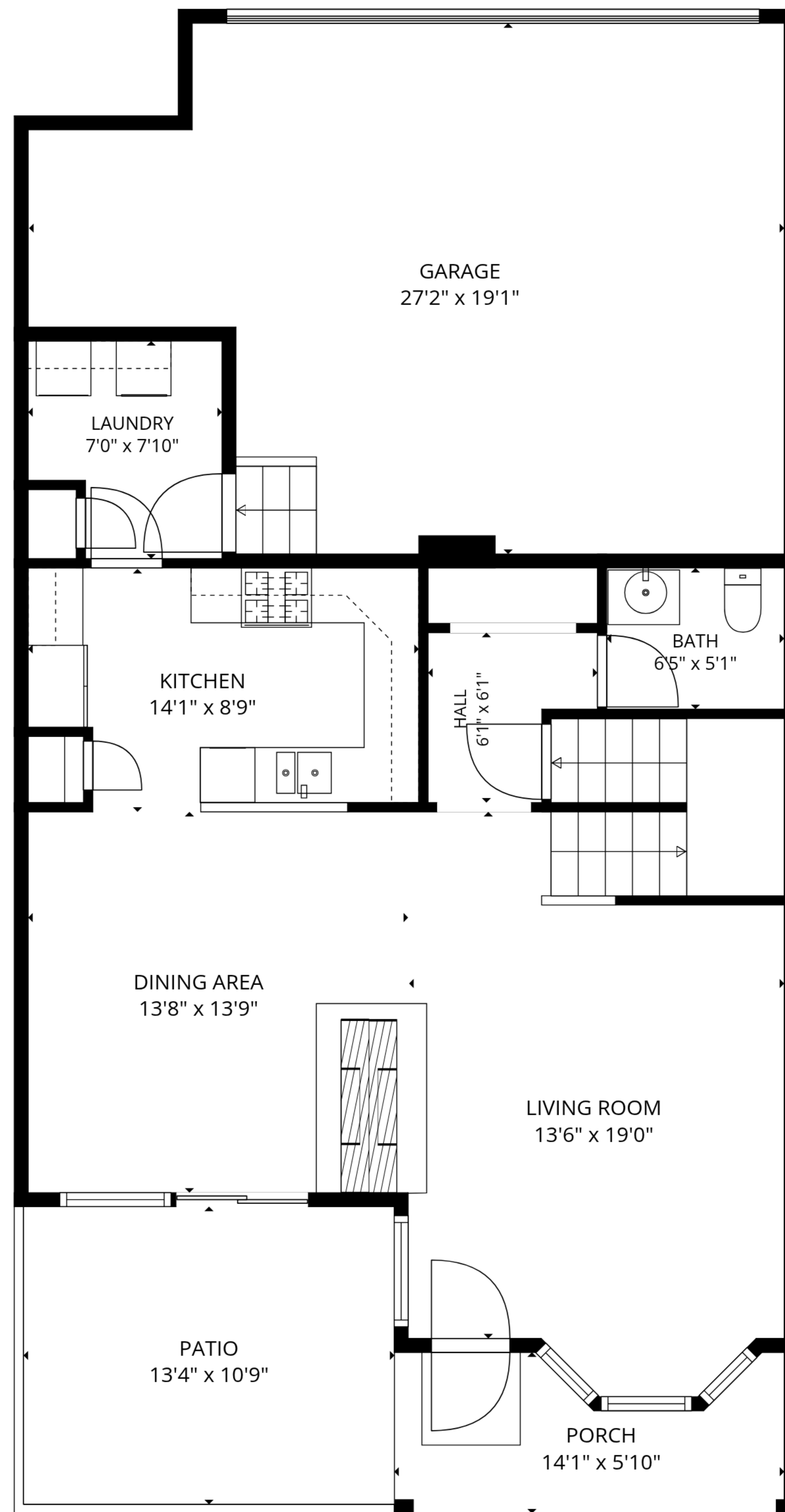
BASEMENT  
27'2" x 29'0"



**TOTAL: 1742 sq. ft**

Basement: 0 sq. ft, 1st floor: 753 sq. ft, 2nd floor: 989 sq. ft  
EXCLUDED AREAS: BASEMENT: 718 sq. ft, GARAGE: 437 sq. ft, PATIO: 143 sq. ft,  
PORCH: 69 sq. ft, OPEN TO BELOW: 158 sq. ft, WALLS: 202 sq. ft

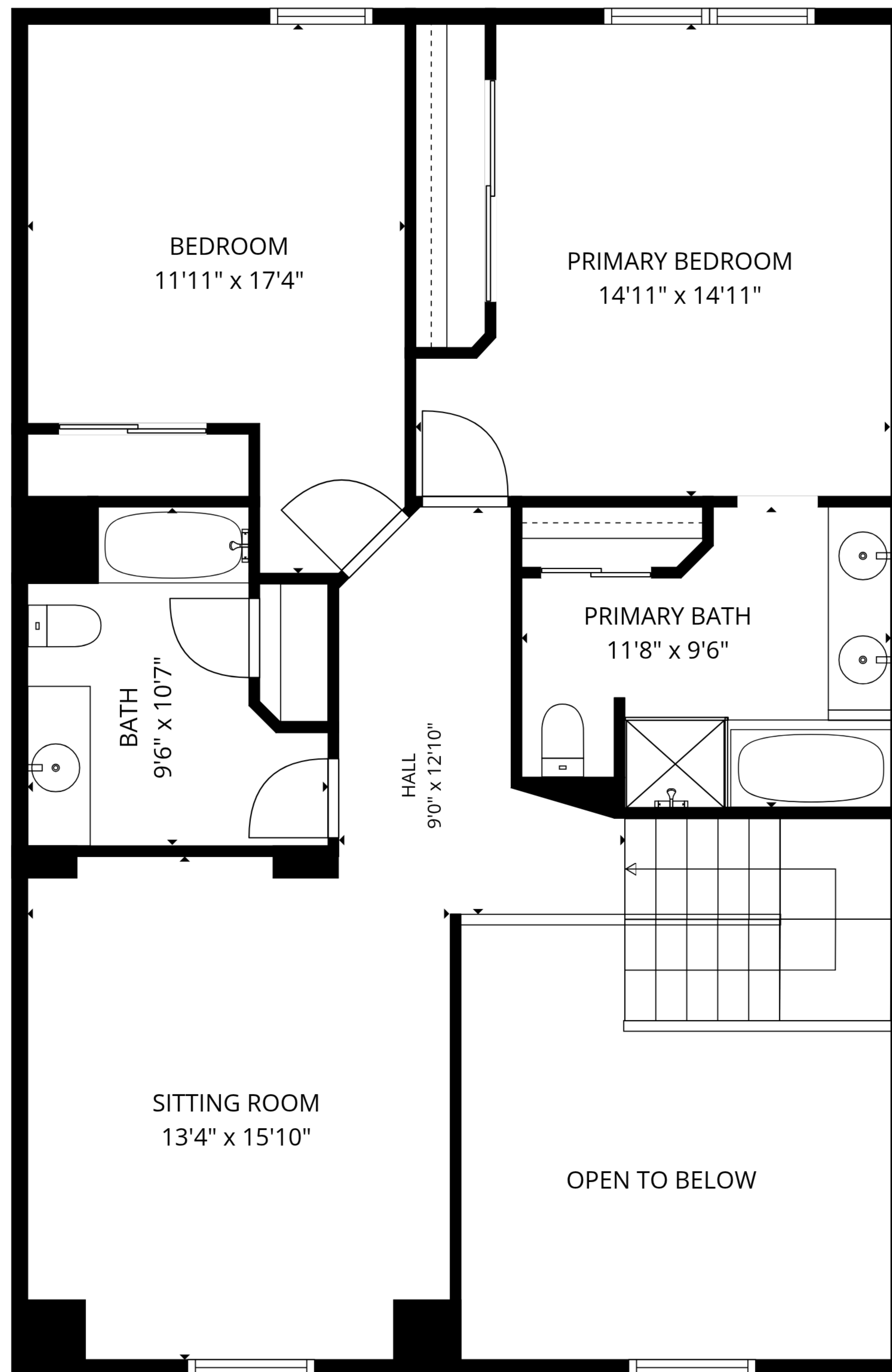
SIZES AND DIMENSIONS ARE APPROXIMATE, ACTUAL MAY VARY.



**TOTAL: 1742 sq. ft**

Basement: 0 sq. ft, 1st floor: 753 sq. ft, 2nd floor: 989 sq. ft  
 EXCLUDED AREAS: BASEMENT: 718 sq. ft, GARAGE: 437 sq. ft, PATIO: 143 sq. ft,  
 PORCH: 69 sq. ft, OPEN TO BELOW: 158 sq. ft, WALLS: 202 sq. ft

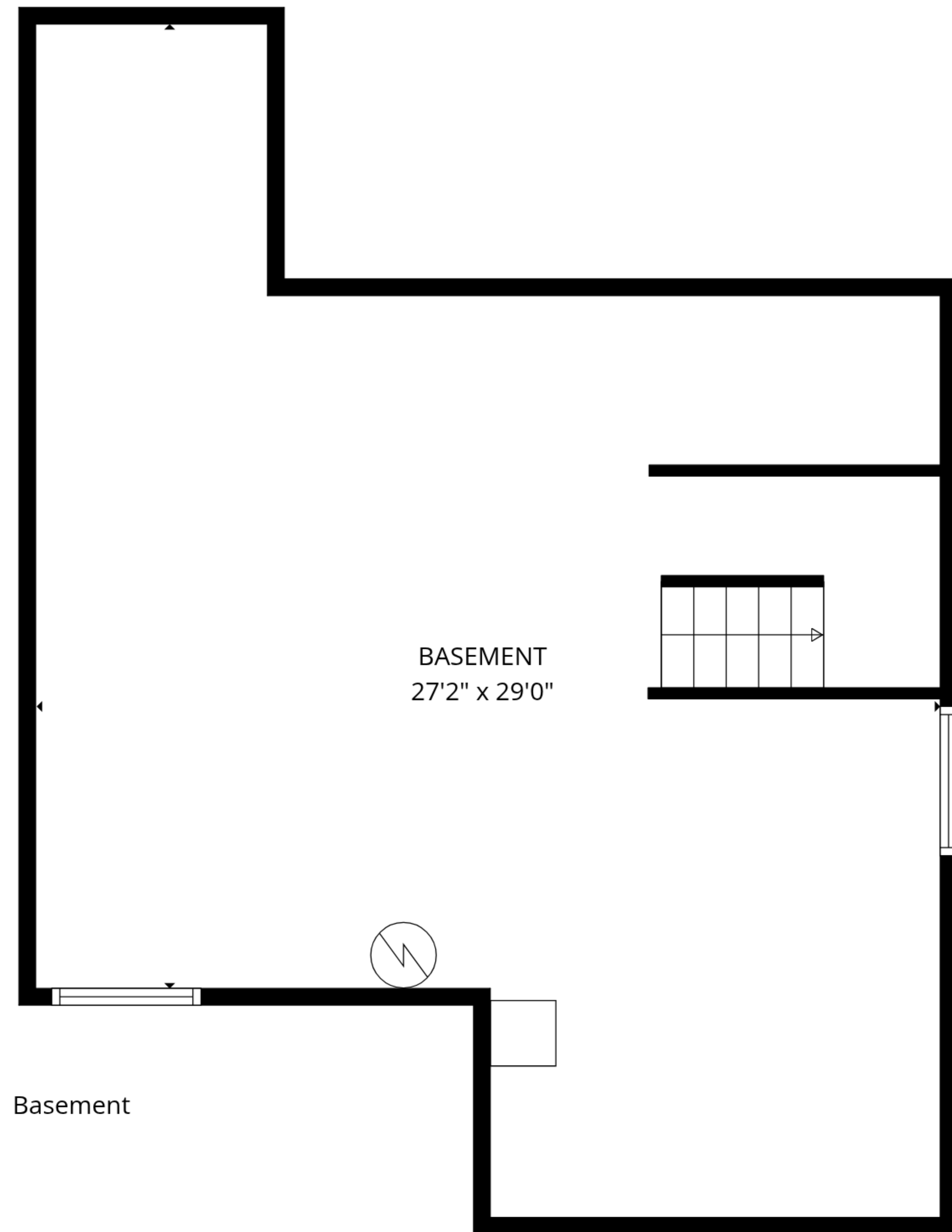
SIZES AND DIMENSIONS ARE APPROXIMATE, ACTUAL MAY VARY.



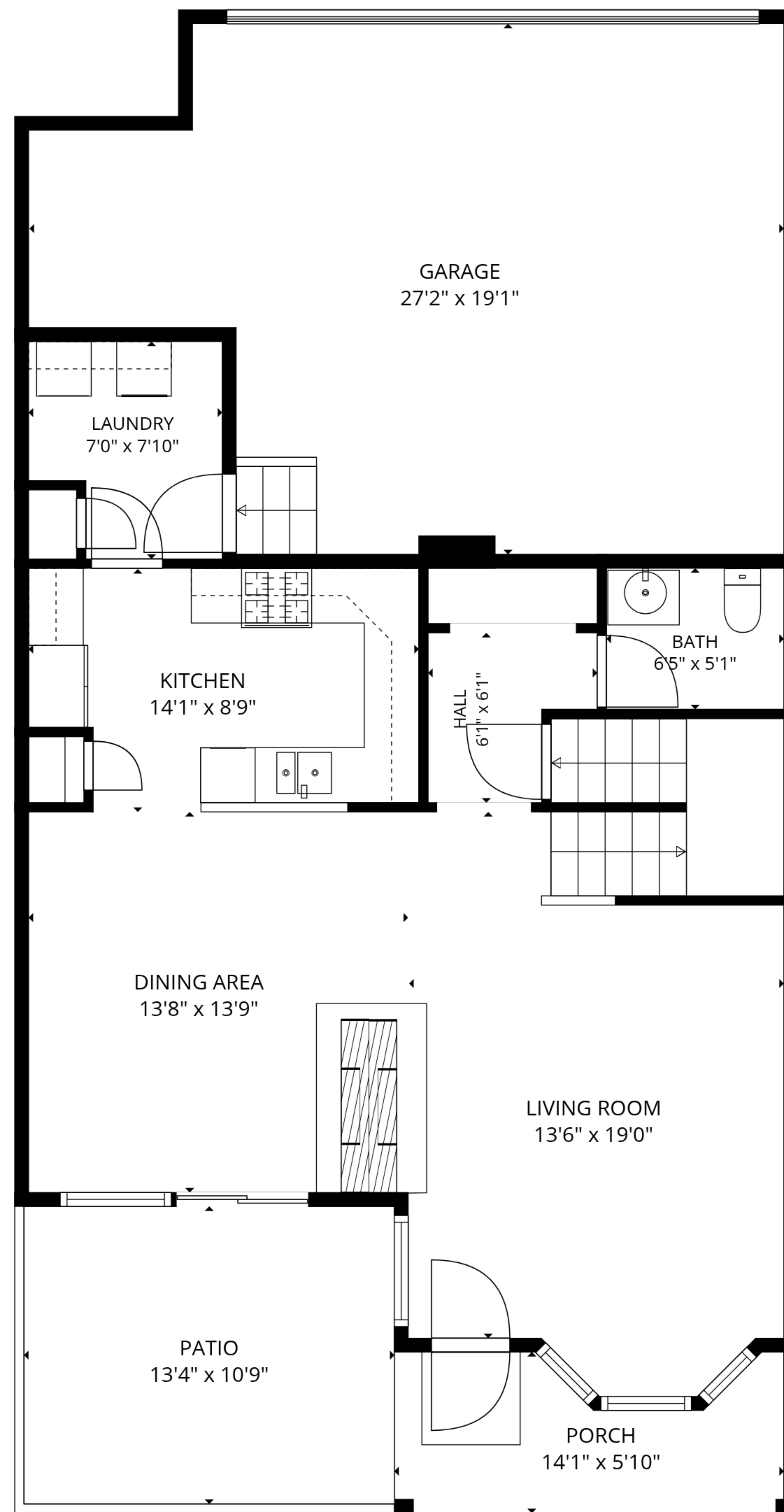
**TOTAL: 1742 sq. ft**

Basement: 0 sq. ft, 1st floor: 753 sq. ft, 2nd floor: 989 sq. ft  
 EXCLUDED AREAS: BASEMENT: 718 sq. ft, GARAGE: 437 sq. ft, PATIO: 143 sq. ft,  
 PORCH: 69 sq. ft, OPEN TO BELOW: 158 sq. ft, WALLS: 202 sq. ft

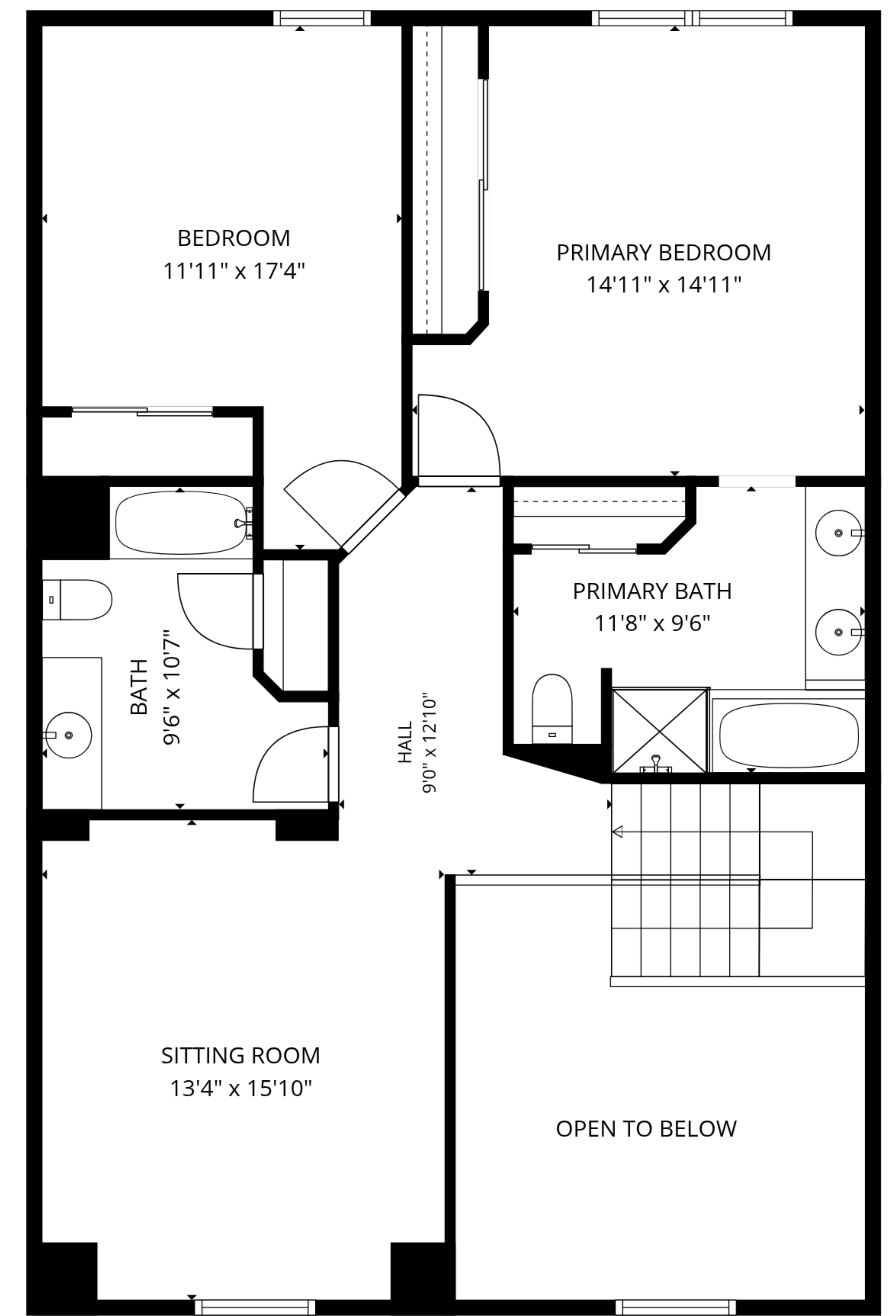
SIZES AND DIMENSIONS ARE APPROXIMATE, ACTUAL MAY VARY.



Basement



1st floor



2nd floor

**TOTAL: 1742 sq. ft**

Basement: 0 sq. ft, 1st floor: 753 sq. ft, 2nd floor: 989 sq. ft  
 EXCLUDED AREAS: BASEMENT: 718 sq. ft, GARAGE: 437 sq. ft, PATIO: 143 sq. ft,  
 PORCH: 69 sq. ft, OPEN TO BELOW: 158 sq. ft, WALLS: 202 sq. ft

SIZES AND DIMENSIONS ARE APPROXIMATE, ACTUAL MAY VARY.