

Home data report

**1691 Webb Lane, Mount Crawford, Rockingham County,
Virginia, United States, 22841**



Total Area: 2467 sq. ft

1st Floor: 885 sq. ft, 2nd Floor: 1582 sq. ft

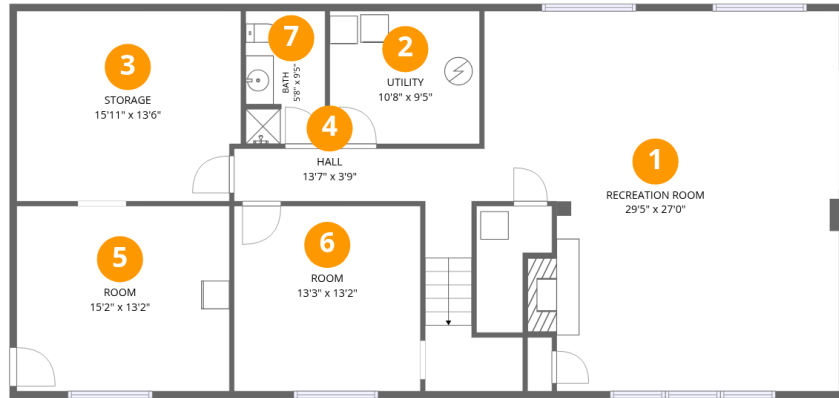
Excluded: Room 383 sq. ft, Storage 212 sq. ft, Utility 101 sq. ft, Garage 636 sq. ft, Porch 47 sq. ft, Deck 383 sq. ft, Walls: 217 sq. ft

Property summary



Home data report

1691 Webb Lane, Mount Crawford, Rockingham County,
Virginia, United States, 22841



Room dimensions

Floor 1

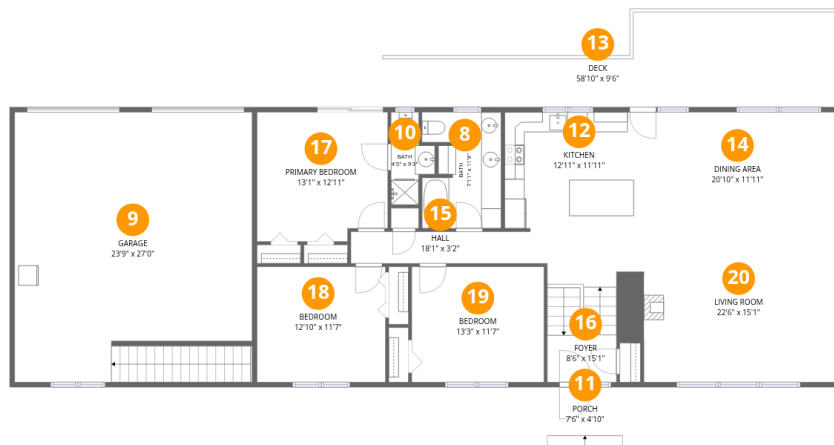
Total:885sqft

Excluded: 696sqft

#		Dimensions	sqft	Counted as living area
1	Recreation Room	29'5" x 27'0"	699 sq. ft	Yes
2	Utility	10'8" x 9'5"	101 sq. ft	No
3	Storage	15'11" x 13'6"	212 sq. ft	No
4	Hall	13'7" x 3'9"	51 sq. ft	Yes
5	Room	15'2" x 13'2"	199 sq. ft	No
6	Room	13'3" x 13'2"	175 sq. ft	No
7	Bath	5'8" x 9'5"	53 sq. ft	Yes

Home data report

1691 Webb Lane, Mount Crawford, Rockingham County, Virginia, United States, 22841



Room dimensions

Floor 2

Total: 1582sqft

Excluded: 1066sqft

#		Dimensions	sqft	Counted as living area
8	Bath	7'11" x 11'8"	86 sq. ft	Yes
9	Garage	23'9" x 27'0"	636 sq. ft	No
10	Bath	4'5" x 9'3"	30 sq. ft	Yes
11	Porch	7'6" x 4'10"	47 sq. ft	No
12	Kitchen	12'11" x 11'11"	154 sq. ft	Yes
13	Deck	58'10" x 9'6"	383 sq. ft	No
14	Dining Area	20'10" x 11'11"	249 sq. ft	Yes
15	Hall	18'1" x 3'2"	57 sq. ft	Yes
16	Foyer	8'6" x 15'1"	110 sq. ft	Yes
17	Primary Bedroom	13'1" x 12'11"	164 sq. ft	Yes
18	Bedroom	12'10" x 11'7"	149 sq. ft	Yes

Home data report

**1691 Webb Lane, Mount Crawford, Rockingham County,
Virginia, United States, 22841**

#		Dimensions	sqft	Counted as living area
19	Bedroom	13'3" x 11'7"	153 sq. ft	Yes
20	Living Room	22'6" x 15'1"	325 sq. ft	Yes

1691 Webb Lane, Mount Crawford, Rockingham County,
Virginia, United States, 22841

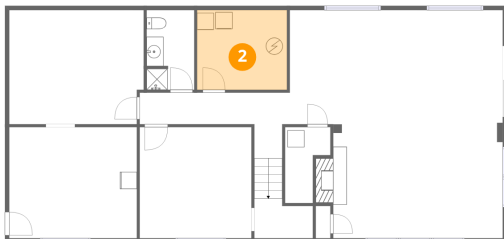
1 Floor 1 - Recreation Room



Dimensions: 29'5" x 27'0"
Area: 699 sq. ft
Counted as living area: Yes

Heated: Yes
Finished: Yes
Enclosed: Yes
Contiguous: Yes
Permitted: Yes
Wet space: No
Addition: No
Conversion: No

2 Floor 1 - Utility

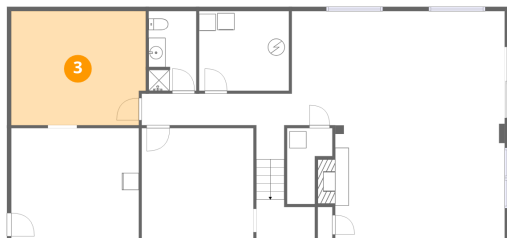


Dimensions: 10'8" x 9'5"
Area: 101 sq. ft
Counted as living area: No

Heated: Yes
Finished: No
Enclosed: Yes
Contiguous: Yes
Permitted: Yes
Wet space: No
Addition: No
Conversion: No

1691 Webb Lane, Mount Crawford, Rockingham County,
Virginia, United States, 22841

3 Floor 1 - Storage



Dimensions: 15'11" x 13'6"

Area: 212 sq. ft

Counted as living area: No

Heated: No

Finished: No

Enclosed: No

Contiguous: Yes

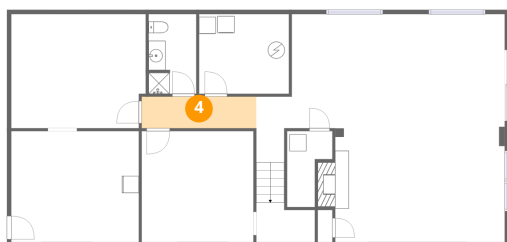
Permitted: Yes

Wet space: No

Addition: No

Conversion: No

4 Floor 1 - Hall



Dimensions: 13'7" x 3'9"

Area: 51 sq. ft

Counted as living area: Yes

Heated: Yes

Finished: Yes

Enclosed: Yes

Contiguous: Yes

Permitted: Yes

Wet space: No

Addition: No

Conversion: No

5 Floor 1 - Room



Dimensions: 15'2" x 13'2"

Area: 199 sq. ft

Counted as living area: No

Heated: Yes

Finished: No

Enclosed: Yes

Contiguous: Yes

Permitted: Yes

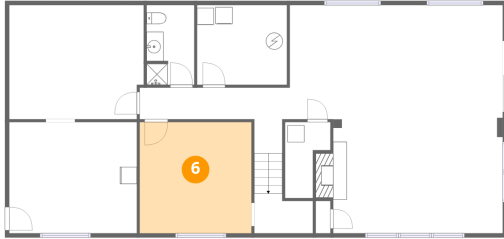
Wet space: No

Addition: No

Conversion: No

1691 Webb Lane, Mount Crawford, Rockingham County,
Virginia, United States, 22841

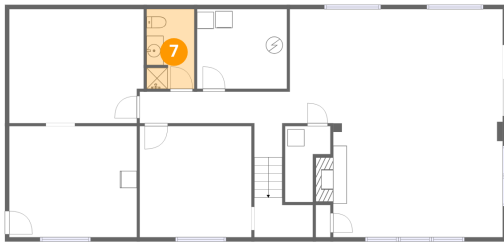
6 Floor 1 - Room



Dimensions: 13'3" x 13'2"
Area: 175 sq. ft
Counted as living area: No

Heated: Yes
Finished: No
Enclosed: Yes
Contiguous: Yes
Permitted: Yes
Wet space: No
Addition: No
Conversion: No

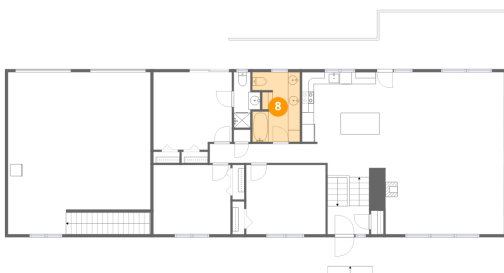
7 Floor 1 - Bath



Dimensions: 5'8" x 9'5"
Area: 53 sq. ft
Counted as living area: Yes

Heated: Yes
Finished: Yes
Enclosed: Yes
Contiguous: Yes
Permitted: Yes
Wet space: Yes
Addition: No
Conversion: No

8 Floor 2 - Bath



Dimensions: 7'11" x 11'8"
Area: 86 sq. ft
Counted as living area: Yes

Heated: Yes
Finished: Yes
Enclosed: Yes
Contiguous: Yes
Permitted: Yes
Wet space: Yes
Addition: No
Conversion: No

1691 Webb Lane, Mount Crawford, Rockingham County,
Virginia, United States, 22841

9 Floor 2 - Garage



Dimensions: 23'9" x 27'0"
Area: 636 sq. ft
Counted as living area: No

Heated: No
Finished: No
Enclosed: Yes
Contiguous: Yes
Permitted: Yes
Wet space: No
Addition: No
Conversion: No

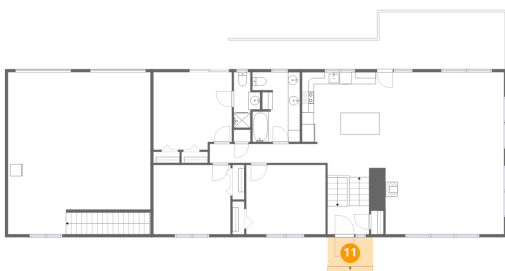
10 Floor 2 - Bath



Dimensions: 4'5" x 9'3"
Area: 30 sq. ft
Counted as living area: Yes

Heated: Yes
Finished: Yes
Enclosed: Yes
Contiguous: Yes
Permitted: Yes
Wet space: Yes
Addition: No
Conversion: No

11 Floor 2 - Porch



Dimensions: 7'6" x 4'10"
Area: 47 sq. ft
Counted as living area: No

Heated: No
Finished: No
Enclosed: No
Contiguous: Yes
Permitted: Yes
Wet space: No
Addition: No
Conversion: No

1691 Webb Lane, Mount Crawford, Rockingham County,
Virginia, United States, 22841

12 Floor 2 - Kitchen



Dimensions: 12'11" x 11'11"
Area: 154 sq. ft
Counted as living area: Yes

Heated: Yes
Finished: Yes
Enclosed: Yes
Contiguous: Yes
Permitted: Yes
Wet space: No
Addition: No
Conversion: No

13 Floor 2 - Deck



Dimensions: 58'10" x 9'6"
Area: 383 sq. ft
Counted as living area: No

Heated: No
Finished: No
Enclosed: No
Contiguous: Yes
Permitted: Yes
Wet space: No
Addition: No
Conversion: No

14 Floor 2 - Dining Area



Dimensions: 20'10" x 11'11"
Area: 249 sq. ft
Counted as living area: Yes

Heated: Yes
Finished: Yes
Enclosed: Yes
Contiguous: Yes
Permitted: Yes
Wet space: No
Addition: No
Conversion: No

1691 Webb Lane, Mount Crawford, Rockingham County,
Virginia, United States, 22841

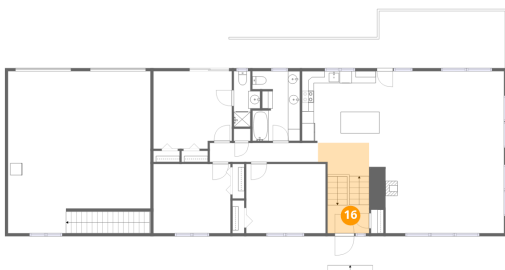
15 Floor 2 - Hall



Dimensions: 18'1" x 3'2"
Area: 57 sq. ft
Counted as living area: Yes

Heated: Yes
Finished: Yes
Enclosed: Yes
Contiguous: Yes
Permitted: Yes
Wet space: No
Addition: No
Conversion: No

16 Floor 2 - Foyer



Dimensions: 8'6" x 15'1"
Area: 110 sq. ft
Counted as living area: Yes

Heated: Yes
Finished: Yes
Enclosed: Yes
Contiguous: Yes
Permitted: Yes
Wet space: No
Addition: No
Conversion: No

17 Floor 2 - Primary Bedroom



Dimensions: 13'1" x 12'11"
Area: 164 sq. ft
Counted as living area: Yes

Heated: Yes
Finished: Yes
Enclosed: Yes
Contiguous: Yes
Permitted: Yes
Wet space: No
Addition: No
Conversion: No

1691 Webb Lane, Mount Crawford, Rockingham County,
Virginia, United States, 22841

18 Floor 2 - Bedroom



Dimensions: 12'10" x 11'7"
Area: 149 sq. ft
Counted as living area: Yes

Heated: Yes
Finished: Yes
Enclosed: Yes
Contiguous: Yes
Permitted: Yes
Wet space: No
Addition: No
Conversion: No

19 Floor 2 - Bedroom



Dimensions: 13'3" x 11'7"
Area: 153 sq. ft
Counted as living area: Yes

Heated: Yes
Finished: Yes
Enclosed: Yes
Contiguous: Yes
Permitted: Yes
Wet space: No
Addition: No
Conversion: No

20 Floor 2 - Living Room



Dimensions: 22'6" x 15'1"
Area: 325 sq. ft
Counted as living area: Yes

Heated: Yes
Finished: Yes
Enclosed: Yes
Contiguous: Yes
Permitted: Yes
Wet space: No
Addition: No
Conversion: No