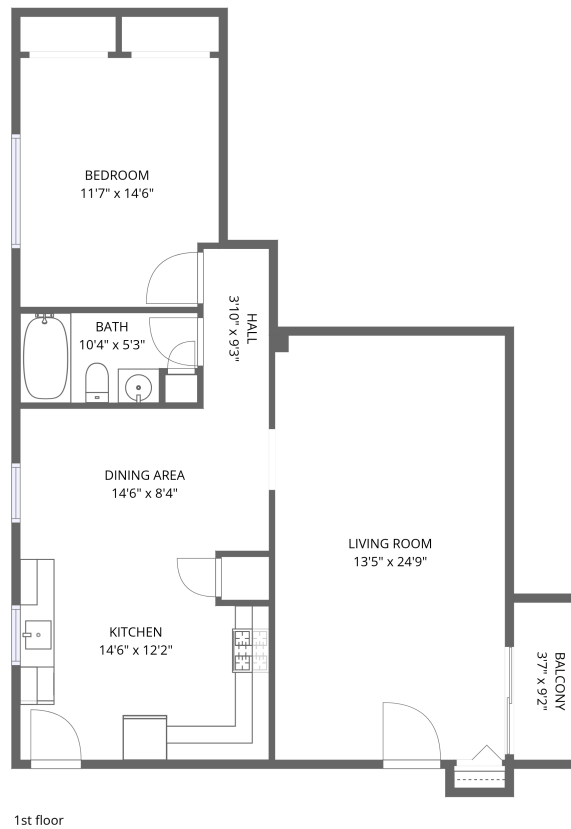


Home data report

4944 Douglas Rd,204,Downers Grove,IL,US, 204



**Total Area: 933 sq. ft**

1st Floor: 933 sq. ft

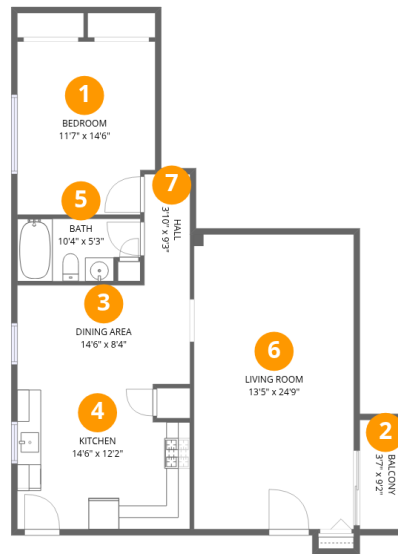
Excluded: Balcony 33 sq. ft, Walls: 0 sq. ft

## Property summary

 **1** Floors

 **1** Bedrooms

 **1** Bathrooms



## Room dimensions

Floor 1

Total:933sqft Excluded: 33sqft

#		Dimensions	sqft	Counted as living area
1	Bedroom	11'7" x 14'6"	163 sq. ft	Yes
2	Balcony	3'7" x 9'2"	33 sq. ft	No
3	Dining Area	14'6" x 8'4"	120 sq. ft	Yes
4	Kitchen	14'6" x 12'2"	166 sq. ft	Yes
5	Bath	10'4" x 5'3"	50 sq. ft	Yes
6	Living Room	13'5" x 24'9"	332 sq. ft	Yes
7	Hall	3'10" x 9'3"	36 sq. ft	Yes

## 1 Floor 1 - Bedroom



Dimensions: 11'7" x 14'6"  
Area: 163 sq. ft  
Counted as living area: Yes

Heated: Yes  
Finished: Yes  
Enclosed: Yes  
Contiguous: Yes  
Permitted: Yes  
Wet space: No  
Addition: No  
Conversion: No

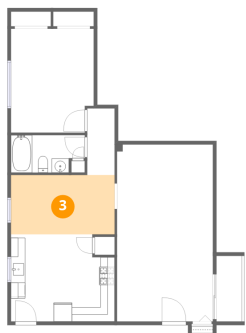
## 2 Floor 1 - Balcony



Dimensions: 3'7" x 9'2"  
Area: 33 sq. ft  
Counted as living area: No

Heated: No  
Finished: No  
Enclosed: No  
Contiguous: Yes  
Permitted: Yes  
Wet space: No  
Addition: No  
Conversion: No

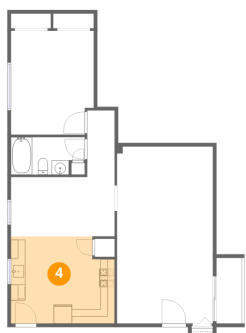
### 3 Floor 1 - Dining Area



Dimensions: 14'6" x 8'4"  
Area: 120 sq. ft  
Counted as living area: Yes

Heated: Yes  
Finished: Yes  
Enclosed: Yes  
Contiguous: Yes  
Permitted: Yes  
Wet space: No  
Addition: No  
Conversion: No

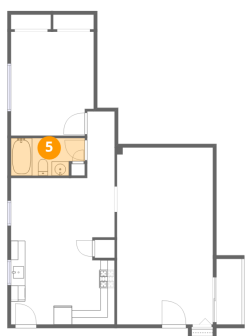
### 4 Floor 1 - Kitchen



Dimensions: 14'6" x 12'2"  
Area: 166 sq. ft  
Counted as living area: Yes

Heated: Yes  
Finished: Yes  
Enclosed: Yes  
Contiguous: Yes  
Permitted: Yes  
Wet space: No  
Addition: No  
Conversion: No

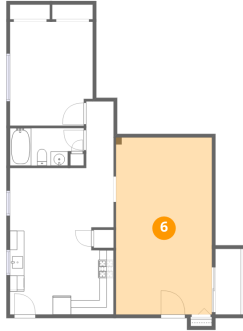
### 5 Floor 1 - Bath



Dimensions: 10'4" x 5'3"  
Area: 50 sq. ft  
Counted as living area: Yes

Heated: Yes  
Finished: Yes  
Enclosed: Yes  
Contiguous: Yes  
Permitted: Yes  
Wet space: Yes  
Addition: No  
Conversion: No

## 6 Floor 1 - Living Room



Dimensions: 13'5" x 24'9"  
Area: 332 sq. ft  
Counted as living area: Yes

Heated: Yes  
Finished: Yes  
Enclosed: Yes  
Contiguous: Yes  
Permitted: Yes  
Wet space: No  
Addition: No  
Conversion: No

## 7 Floor 1 - Hall



Dimensions: 3'10" x 9'3"  
Area: 36 sq. ft  
Counted as living area: Yes

Heated: Yes  
Finished: Yes  
Enclosed: Yes  
Contiguous: Yes  
Permitted: Yes  
Wet space: No  
Addition: No  
Conversion: No