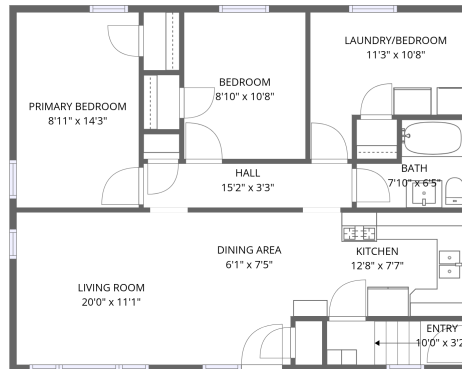
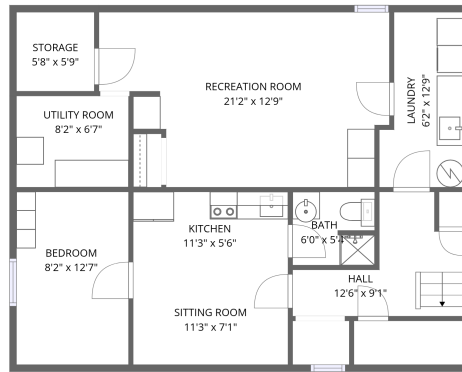


679 Bellaire St, Peterborough, ON, CA



1st floor



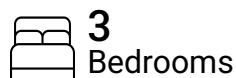
Basement

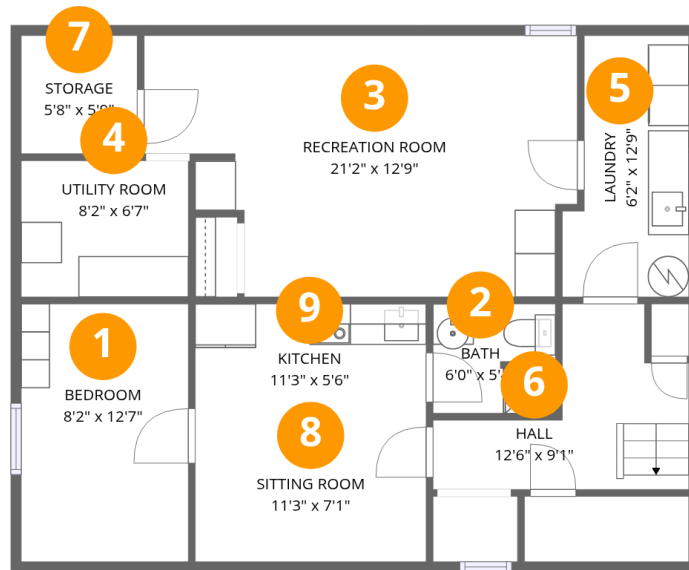
Total Area: 1585 sq. ft

Basement: 748 sq. ft, 1st Floor: 837 sq. ft

Excluded: Utility room 56 sq. ft, Storage 33 sq. ft, Walls: 120 sq. ft

Property summary





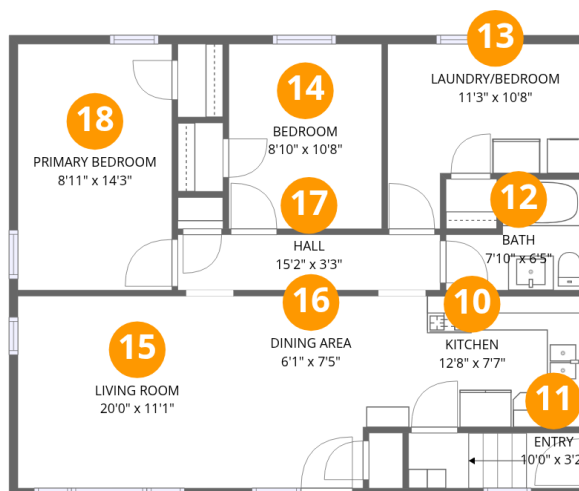
Room dimensions

Floor 1 Below grade

Total: 748sqft

Excluded: 89sqft

#		Dimensions	sqft	Counted as living area
1	Bedroom	8'2" x 12'7"	103 sq. ft	Yes
2	Bath	6'0" x 5'4"	31 sq. ft	Yes
3	Recreation Room	21'2" x 12'9"	237 sq. ft	Yes
4	Utility Room	8'2" x 6'7"	54 sq. ft	No
5	Laundry	6'2" x 12'9"	70 sq. ft	Yes
6	Hall	12'6" x 9'1"	71 sq. ft	Yes
7	Storage	5'8" x 5'9"	33 sq. ft	No
8	Sitting Room	11'3" x 7'1"	80 sq. ft	Yes
9	Kitchen	11'3" x 5'6"	62 sq. ft	Yes



Room dimensions

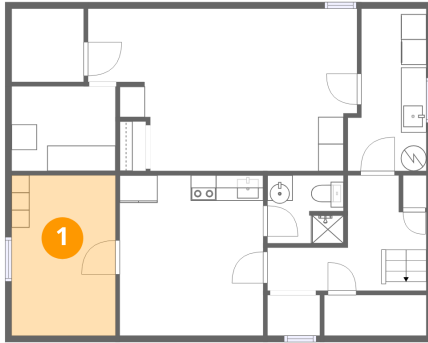
Floor 2

Total: 837 sqft

Excluded: 0 sqft

#		Dimensions	sqft	Counted as living area
10	Kitchen	12'8" x 7'7"	96 sq. ft	Yes
11	Entry	10'0" x 3'2"	32 sq. ft	Yes
12	Bath	7'10" x 6'5"	40 sq. ft	Yes
13	Laundry/Bedroom	11'3" x 10'8"	94 sq. ft	Yes
14	Bedroom	8'10" x 10'8"	95 sq. ft	Yes
15	Living Room	20'0" x 11'1"	177 sq. ft	Yes
16	Dining Area	6'1" x 7'5"	45 sq. ft	Yes
17	Hall	15'2" x 3'3"	49 sq. ft	Yes
18	Primary Bedroom	8'11" x 14'3"	127 sq. ft	Yes

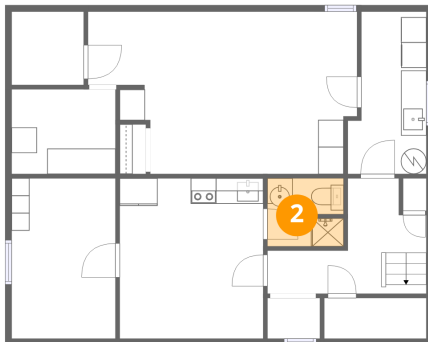
1 Floor 1 - Bedroom



Dimensions: 8'2" x 12'7"
Area: 103 sq. ft
Counted as living area: Yes

Heated: Yes
Finished: Yes
Enclosed: Yes
Contiguous: Yes
Permitted: Yes
Wet space: No
Addition: No
Conversion: No

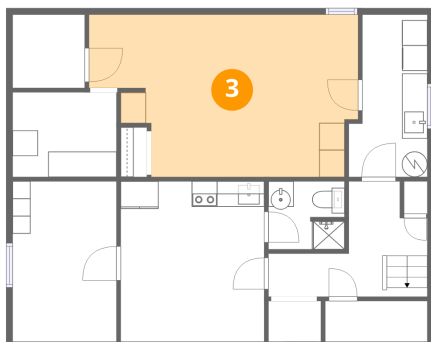
2 Floor 1 - Bath



Dimensions: 6'0" x 5'4"
Area: 31 sq. ft
Counted as living area: Yes

Heated: Yes
Finished: Yes
Enclosed: Yes
Contiguous: Yes
Permitted: Yes
Wet space: Yes
Addition: No
Conversion: No

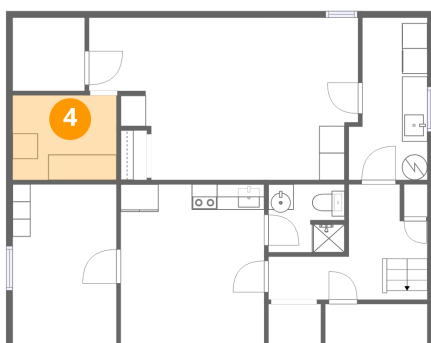
3 Floor 1 - Recreation Room



Dimensions: 21'2" x 12'9"
Area: 237 sq. ft
Counted as living area: Yes

Heated: Yes
Finished: Yes
Enclosed: Yes
Contiguous: Yes
Permitted: Yes
Wet space: No
Addition: No
Conversion: No

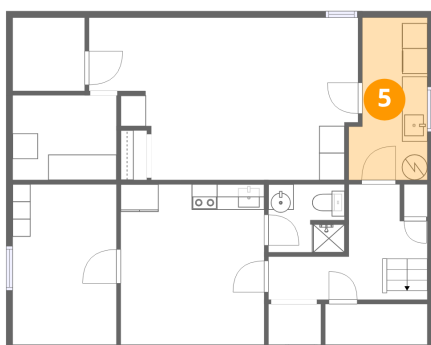
4 Floor 1 - Utility Room



Dimensions: 8'2" x 6'7"
Area: 54 sq. ft
Counted as living area: No

Heated: Yes
Finished: No
Enclosed: Yes
Contiguous: Yes
Permitted: Yes
Wet space: No
Addition: No
Conversion: No

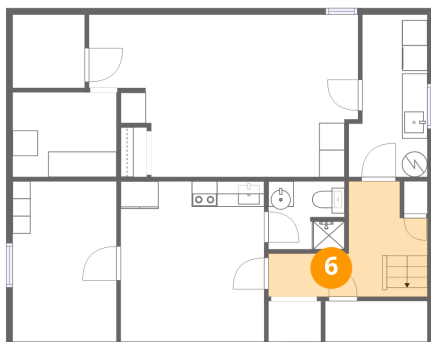
5 Floor 1 - Laundry



Dimensions: 6'2" x 12'9"
Area: 70 sq. ft
Counted as living area: Yes

Heated: Yes
Finished: Yes
Enclosed: Yes
Contiguous: Yes
Permitted: Yes
Wet space: No
Addition: No
Conversion: No

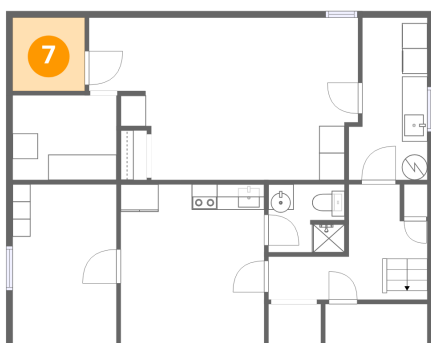
6 Floor 1 - Hall



Dimensions: 12'6" x 9'1"
Area: 71 sq. ft
Counted as living area: Yes

Heated: Yes
Finished: Yes
Enclosed: Yes
Contiguous: Yes
Permitted: Yes
Wet space: No
Addition: No
Conversion: No

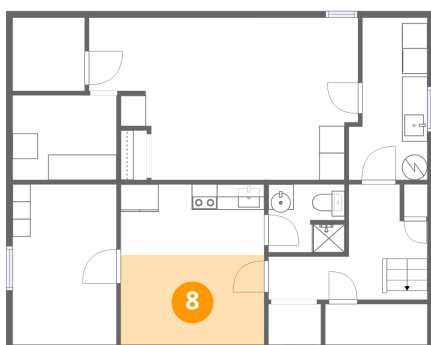
7 Floor 1 - Storage



Dimensions: 5'8" x 5'9"
Area: 33 sq. ft
Counted as living area: No

Heated: No
Finished: No
Enclosed: No
Contiguous: Yes
Permitted: Yes
Wet space: No
Addition: No
Conversion: No

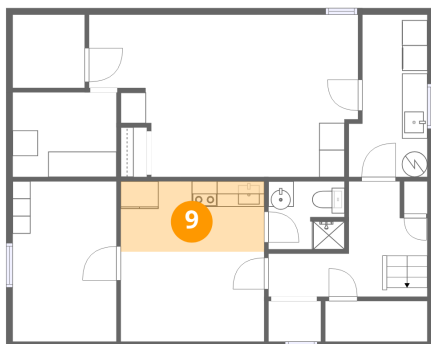
8 Floor 1 - Sitting Room



Dimensions: 11'3" x 7'1"
Area: 80 sq. ft
Counted as living area: Yes

Heated: Yes
Finished: Yes
Enclosed: Yes
Contiguous: Yes
Permitted: Yes
Wet space: No
Addition: No
Conversion: No

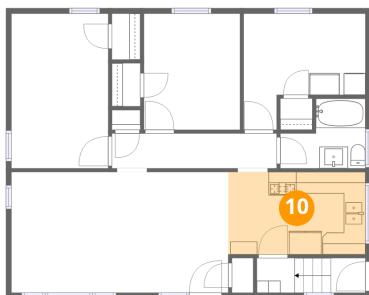
9 Floor 1 - Kitchen



Dimensions: 11'3" x 5'6"
Area: 62 sq. ft
Counted as living area: Yes

Heated: Yes
Finished: Yes
Enclosed: Yes
Contiguous: Yes
Permitted: Yes
Wet space: No
Addition: No
Conversion: No

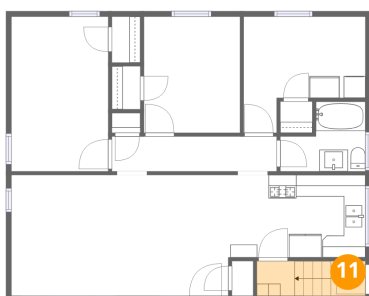
10 Floor 2 - Kitchen



Dimensions: 12'8" x 7'7"
Area: 96 sq. ft
Counted as living area: Yes

Heated: Yes
Finished: Yes
Enclosed: Yes
Contiguous: Yes
Permitted: Yes
Wet space: No
Addition: No
Conversion: No

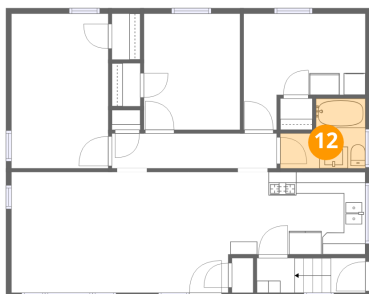
11 Floor 2 - Entry



Dimensions: 10'0" x 3'2"
Area: 32 sq. ft
Counted as living area: Yes

Heated: Yes
Finished: Yes
Enclosed: Yes
Contiguous: Yes
Permitted: Yes
Wet space: No
Addition: No
Conversion: No

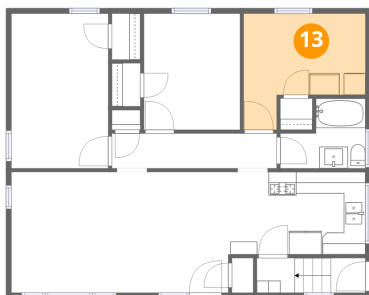
12 Floor 2 - Bath



Dimensions: 7'10" x 6'5"
Area: 40 sq. ft
Counted as living area: Yes

Heated: Yes
Finished: Yes
Enclosed: Yes
Contiguous: Yes
Permitted: Yes
Wet space: Yes
Addition: No
Conversion: No

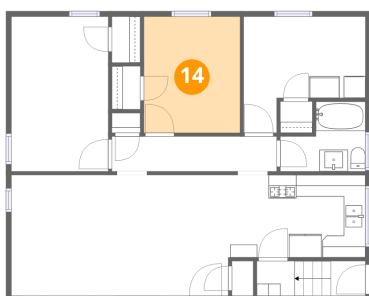
13 Floor 2 - Laundry/Bedroom



Dimensions: 11'3" x 10'8"
Area: 94 sq. ft
Counted as living area: Yes

Heated: Yes
Finished: Yes
Enclosed: Yes
Contiguous: Yes
Permitted: Yes
Wet space: No
Addition: No
Conversion: No

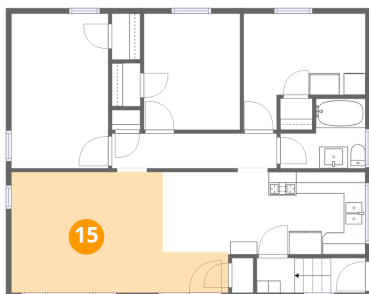
14 Floor 2 - Bedroom



Dimensions: 8'10" x 10'8"
Area: 95 sq. ft
Counted as living area: Yes

Heated: Yes
Finished: Yes
Enclosed: Yes
Contiguous: Yes
Permitted: Yes
Wet space: No
Addition: No
Conversion: No

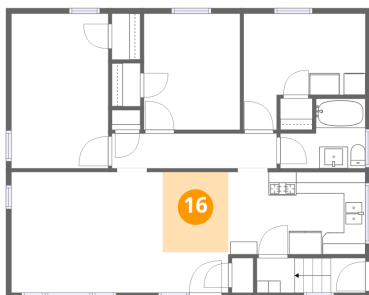
15 Floor 2 - Living Room



Dimensions: 20'0" x 11'1"
Area: 177 sq. ft
Counted as living area: Yes

Heated: Yes
Finished: Yes
Enclosed: Yes
Contiguous: Yes
Permitted: Yes
Wet space: No
Addition: No
Conversion: No

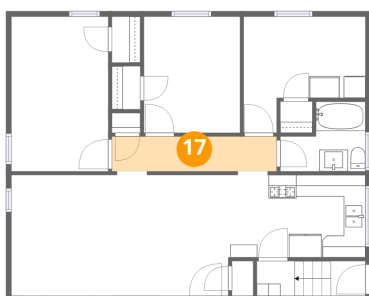
16 Floor 2 - Dining Area



Dimensions: 6'1" x 7'5"
Area: 45 sq. ft
Counted as living area: Yes

Heated: Yes
Finished: Yes
Enclosed: Yes
Contiguous: Yes
Permitted: Yes
Wet space: No
Addition: No
Conversion: No

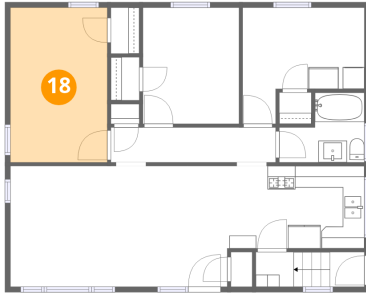
17 Floor 2 - Hall



Dimensions: 15'2" x 3'3"
Area: 49 sq. ft
Counted as living area: Yes

Heated: Yes
Finished: Yes
Enclosed: Yes
Contiguous: Yes
Permitted: Yes
Wet space: No
Addition: No
Conversion: No

18 Floor 2 - Primary Bedroom



Dimensions: 8'11" x 14'3"
Area: 127 sq. ft
Counted as living area: Yes

Heated: Yes
Finished: Yes
Enclosed: Yes
Contiguous: Yes
Permitted: Yes
Wet space: No
Addition: No
Conversion: No